

EXISTING PANEL

PANEL: A5 LOCATION: ELEC CLOSET #205 BUS: 225A MAIN: MLO	VOLTAGE: 208/120V, 3PH/4W ENCLOSURE: NEMA-1 A.I.C. RATINGS: — MFR. RATINGS: EATON
---	--

ØA kVA	ØB kVA	ØC kVA	DESCRIPTION	Pole	Br	Ckt	Ø A B C	Ckt	Br	Pole	DESCRIPTION	ØA kVA	ØB kVA	ØC kVA
-	-	-	EXISTING LOAD	-	-	1	●	2	-	-	EXISTING LOAD	-	-	-
-	-	-	EXISTING LOAD	-	-	3	●	4	-	-	EXISTING LOAD	-	-	-
-	-	-	EXISTING LOAD	-	-	5	●	6	-	-	EXISTING LOAD	-	-	-
-	-	-	EXISTING LOAD	-	-	7	●	8	-	-	EXISTING LOAD	-	-	-
-	-	-	EXISTING LOAD	-	-	9	●	10	-	-	EXISTING LOAD	-	-	-
-	-	-	EXISTING LOAD	-	-	11	●	12	-	-	EXISTING LOAD	-	-	-
-	-	-	EXISTING LOAD	-	-	13	●	14	-	-	EXISTING LOAD	-	-	-
-	-	-	EXISTING LOAD	-	-	15	●	16	-	-	EXISTING LOAD	-	-	-
-	-	-	EXISTING LOAD	-	-	17	●	18	-	-	EXISTING LOAD	-	-	-
-	-	-	EXISTING LOAD	-	-	19	●	20	-	-	EXISTING LOAD	-	-	-
-	-	-	EXISTING LOAD	-	-	21	●	22	-	-	EXISTING LOAD	-	-	-
-	-	-	EXISTING LOAD	-	-	23	●	24	-	-	EXISTING LOAD	-	-	-
-	-	-	EXISTING LOAD	-	-	25	●	26	-	-	EXISTING LOAD	-	-	-
-	-	-	EXISTING LOAD	-	-	27	●	28	-	-	EXISTING LOAD	-	-	-
-	-	-	EXISTING LOAD	-	-	29	●	30	-	-	EXISTING LOAD	-	-	-
-	-	-	EXISTING LOAD	-	-	31	●	32	-	-	EXISTING LOAD	-	-	-
-	-	-	EXISTING LOAD	-	-	33	●	34	-	-	EXISTING LOAD	-	-	-
-	-	-	EXISTING LOAD	-	-	35	●	36	20	1	HAND DRYER - 1ST FLR TOILET	-	-	1.45
-	-	-	EXISTING LOAD	-	-	37	●	38	-	-		-	-	-
-	-	-	EXISTING LOAD	-	-	39	●	40	-	-		-	-	-
-	-	-	EXISTING LOAD	-	-	41	●	42	-	-		-	-	-
CONNECTED LOAD														
PHASE A: __ kVA														
PHASE B: __ kVA														
PHASE C: __ kVA														
TOTAL CONNECTED LOAD = __ kVA														

* PROVIDE NEW CIRCUIT BREAKER AND NEW 2#12 + 1#12G - 3/4" C WIRING.

04-18-2019 E9.0
 DATE SHEET NO.
 18041 SK-E.1
 PROJECT NO.

PROJECT: DELAWARE STATE UNIVERSITY
 PROJECT ID NUMBER PC-18-021
 ECHS FIT OUT - PHASE 1
 R.S. GROSSLEY HALL
 1200 NORTH DUPONT HIGHWAY
 DOVER, DE 19901


STUDIO JAED
 ARCHITECTS ■ ENGINEERS ■ FACILITIES SOLUTIONS
www.studiojaed.com

CORPORATE HEADQUARTERS 2000 WISCONSIN HILL ROAD, STE. 110 BLAD, DELAWARE 19707 P: (302) 852-4152 F: (302) 852-4423	PROVIDENCE OFFICE 10 CORNHILL STREET, STE. 700 PROVIDENCE, RHODE ISLAND 02903	HARTFORD OFFICE 213 FRONT STREET, P.O. BOX 264 CRUMPSON HARTFORD 06108
---	---	--

REVISIONS:
 ▲ ADDENDUM #2

ELECTRICAL NOTES:

ELECTRICAL DEMOLITION:

ED - 1 DISCONNECT AND REMOVE ALL LIGHT FIXTURES AND MOTION SENSORS. DISCONNECT AND REMOVE WIRE AND CONDUIT AS REQUIRED TO FACILITATE ARCHITECTURAL WORK. RETAIN CIRCUIT TO BE REUSED WITH NEW FIXTURES.

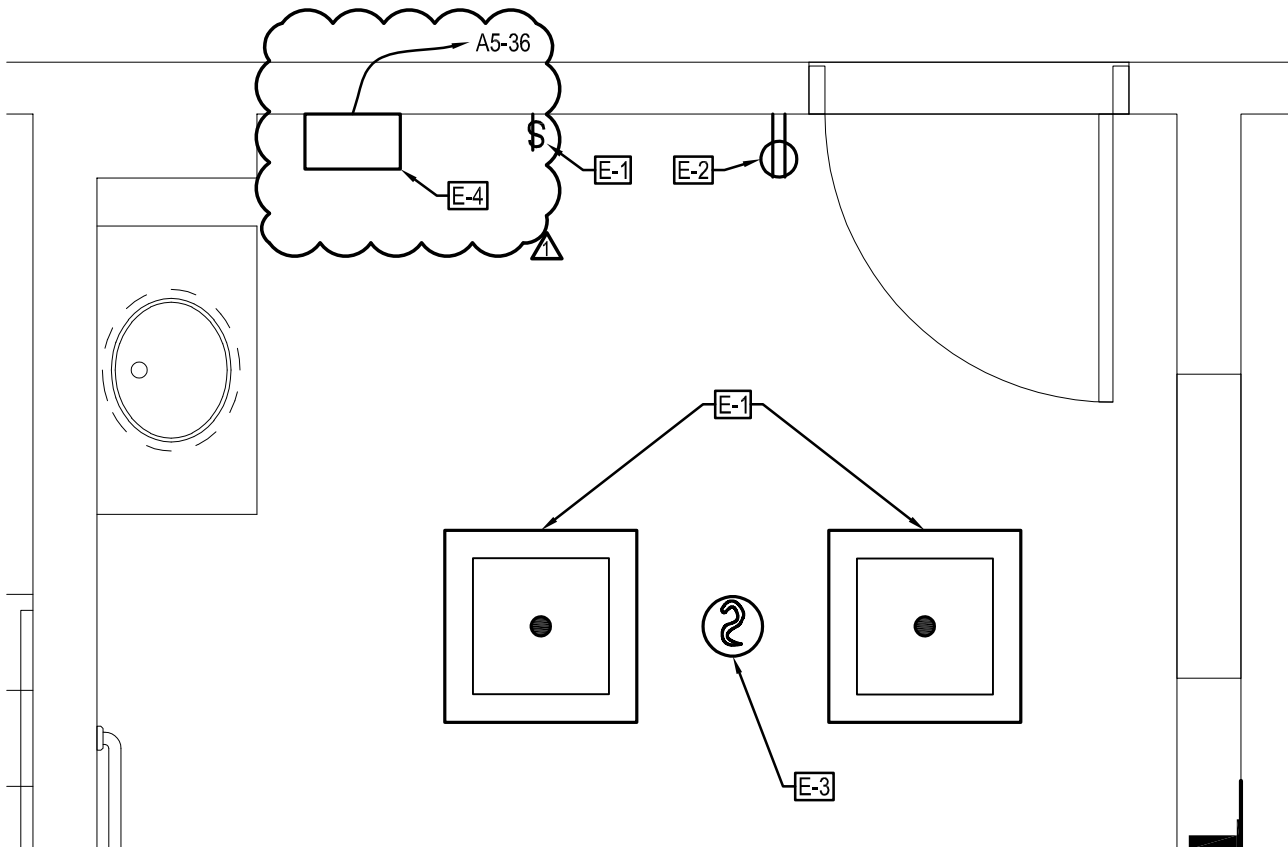
ELECTRICAL NEW:

E - 1 PROVIDE AND INSTALL NEW 2X2 LIGHT FIXTURES (FINELITE / HPR-LED-A-2X2-DCO-S-840-120/277V-SC-C1 OR APPROVED EQUAL) AND CONNECT TO EXISTING LIGHTING CIRCUIT. PROVIDE AND INSTALL NEW LIGHT SWITCH WITH EXISTING WIRING.

E - 2 PROVIDE AND INSTALL NEW RECEPTACLE WITH EXISTING WIRING.

E - 3 PROVIDE AND INSTALL A NEW, WALL MOUNTED, HORN STROBE AND PROVIDE NEW WIRING AS REQUIRED.

E - 4 PROVIDE AND INSTALL NEW WARM AIR HAND DRYER; EXCEL DRYER INC - XLERATOR HAND DRYER XL OR APPROVED EQUAL WITH ADJUSTABLE SPEED, SOUND CONTROL, ADJUSTABLE HEAT CONTROL, AND AUTOMATIC SENSOR OPERATED.



1
SK-E.2

PARTIAL ELECTRICAL FIRST FLOOR NEW PLAN



SCALE: 1/2" = 1'-0"

04-18-2019

E9.1

PROJECT:

DELAWARE STATE UNIVERSITY
PROJECT ID NUMBER PC-18-021
ECHS FIT OUT - PHASE 1
R.S. GROSSLEY HALL
1200 NORTH DUPONT HIGHWAY
DOVER, DE 19901



STUDIO JAED
ARCHITECTS ■ ENGINEERS ■ FACILITIES SOLUTIONS
www.studiojaed.com
info@studiojaed.com

CONDOLETTA HEADQUARTERS
3000 WOODLARK FIEL ROAD, STE. 110
REAR, DELAWARE 19717
P (302) 852-4152 F (302) 852-4423

PROVIDENCE OFFICE
10 CORRADE STREET | STE. 700
PROVIDENCE, RHODE ISLAND 02903

MARPOLE OFFICE
213 FRONT STREET | P.O. BOX 264
CRUMPSON, MARYLAND 21036

STUDIO JAED IS AN EQUAL OPPORTUNITY FIRM.
We are an equal opportunity employer. All qualified applicants will receive consideration for employment without regard to race, gender, religion, or national origin.

REVISIONS:

△ ADDENDUM #2

DATE

SHEET NO.

18041

SK-E.2

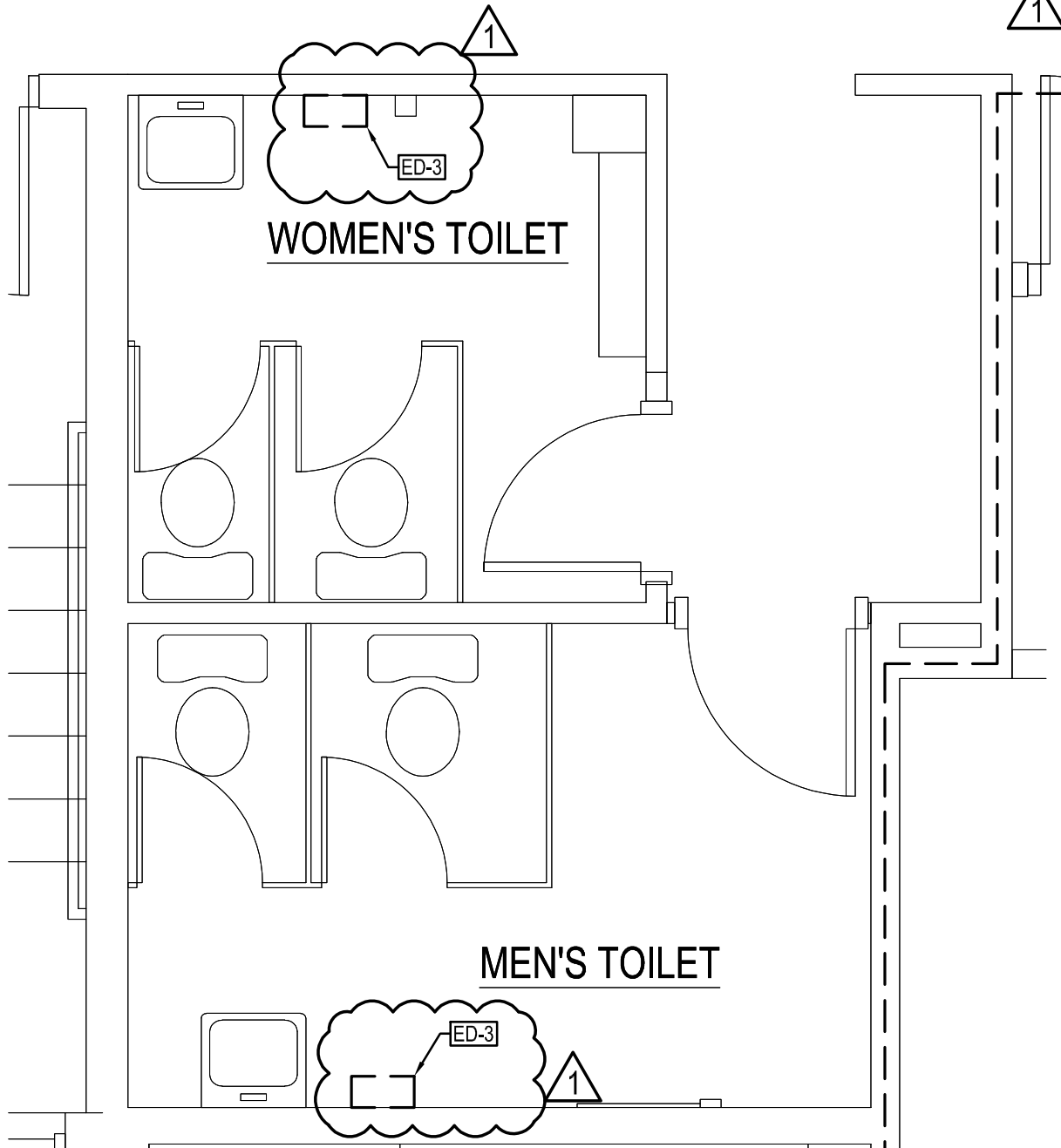
PROJECT NO.

ELECTRICAL DEMOLITION NOTES:

ED-1 DISCONNECT AND REMOVE ELECTRICAL EQUIPMENT COMPLETELY BACK TO SOURCE, INCLUDING RECEPTACLES, DATA OUTLETS, THERMOSTATS, WIREMOLD, CONDUIT, AND WIRE.

ED-2 DISCONNECT WIRELESS ACCESS POINT ROUTER AND RETAIN TO RELOCATE.

ED-3 DISCONNECT AND REMOVE WARM AIR HAND DRYER COMPLETELY.



PARTIAL ELECTRICAL SECOND FLOOR DEMOLITION PLAN



1
SK-E.3

SCALE: 3/8" = 1'-0"

04-18-2019

E9.2

DATE

SHEET NO.

18041

SK-E.3

PROJECT NO.

PROJECT:

DELAWARE STATE UNIVERSITY
PROJECT ID NUMBER PC-18-021
ECHS FIT OUT - PHASE 1
R.S. GROSSLEY HALL
1200 NORTH DUPONT HIGHWAY
DOVER, DE 19901



STUDIO JAED
ARCHITECTS ■ ENGINEERS ■ FACILITIES SOLUTIONS
www.studiojaed.com
info@studiojaed.com

CONCORDIA UNIVERSITY
3600 WOODLARK FLD BLDG 516, 110
BEAN, DELAWARE 19709
P: (302) 852-4102 F: (302) 852-4423

PROVIDENCE OFFICE
10 CORNHILL STREET | 5TH FL. 700
PROVIDENCE, RHODE ISLAND 02903

HARTFORD OFFICE
213 FRONT STREET, P.O. BOX 254
CRUMFORD, MARYLAND 21036

STUDIO JAED IS AN EQUAL OPPORTUNITY
AFFIRMATIVE ACTION EMPLOYER.
WE ENCOURAGE DIVERSITY IN OUR
EMPLOYMENT PRACTICES.

REVISIONS:

△ ADDENDUM #2