

*Michael R. Wigley, AIA, LEED®AP
W. Zachary Crouch, P.E.
Michael E. Wheedleton, AIA
Jason P. Loar, P.E.
Ring W. Lardner, P.E.
Jamie L. Sechler, P.E.*

**STATE OF DELAWARE
DEPARTMENT OF HEALTH & SOCIAL SERVICES
MAC CENTER THERAPY POOL
AT
STOCKLEY CENTER
26351 PATRIOTS WAY
GEORGETOWN, DELAWARE 19947
DBF #586B037.H02 ❖ OMB/DFM #MC3511000040**

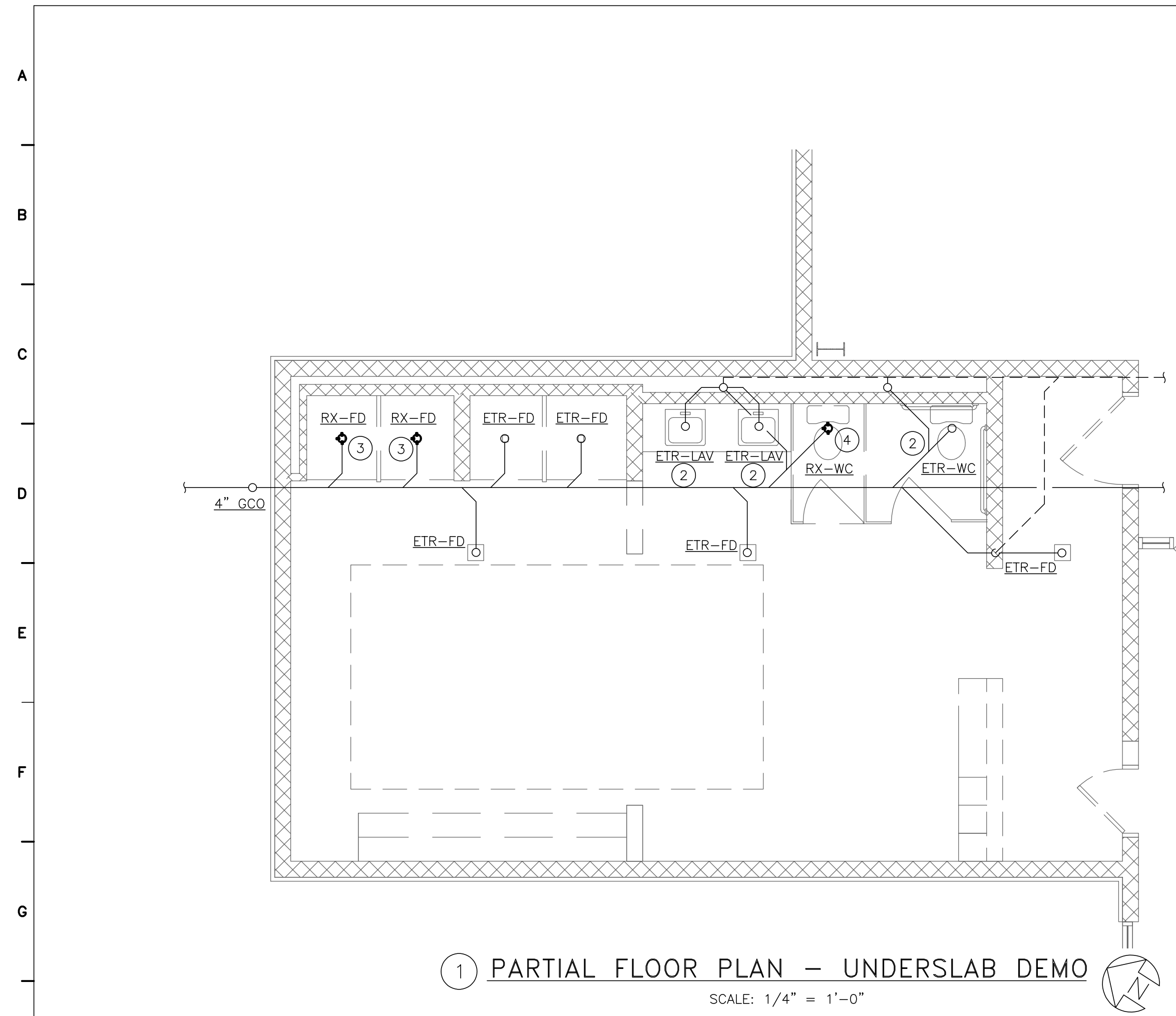
SEPTEMBER 4, 2019

ADDENDUM NO. 2

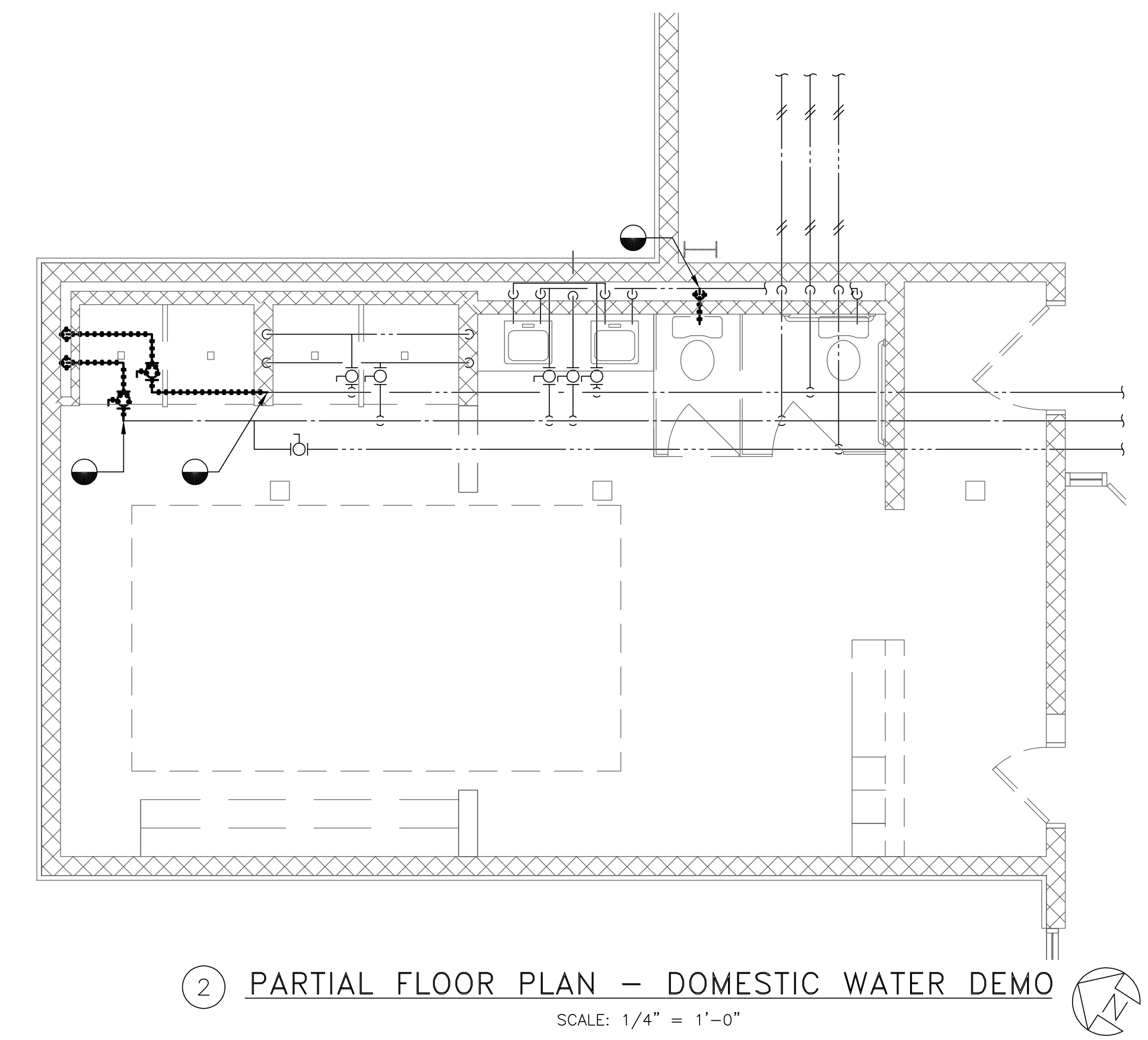
The following items shall become a part of the contract documents. Contractor must acknowledge receipt of this addendum on the Bid Form. Failure to do so may subject the Bidder to disqualification.

- Item No. 1 A revised drawing M1.1 which located a new hose bib, trench drain and changes the pool piping to 6" conduit is attached to this addendum.
- Item No. 2 The basis of design for the trench drain is "Deck-O-Drain," product data is attached.
- Item No. 3 Finish Clarification: The pool equipment room and the new Therapy Pool Room shall have a new epoxy floor finish with 6" integral base. Refer to specification section 09 67 00 – Fluid Applied Epoxy Flooring.
- Item No. 4 Finish Clarification: All existing walls will be painted new inside the Therapy Pool area.
- Item No. 5 The metal lockers noted on drawing A1 are double tier 3 wide standard steel lockers, 18" x 18" x 78" high.

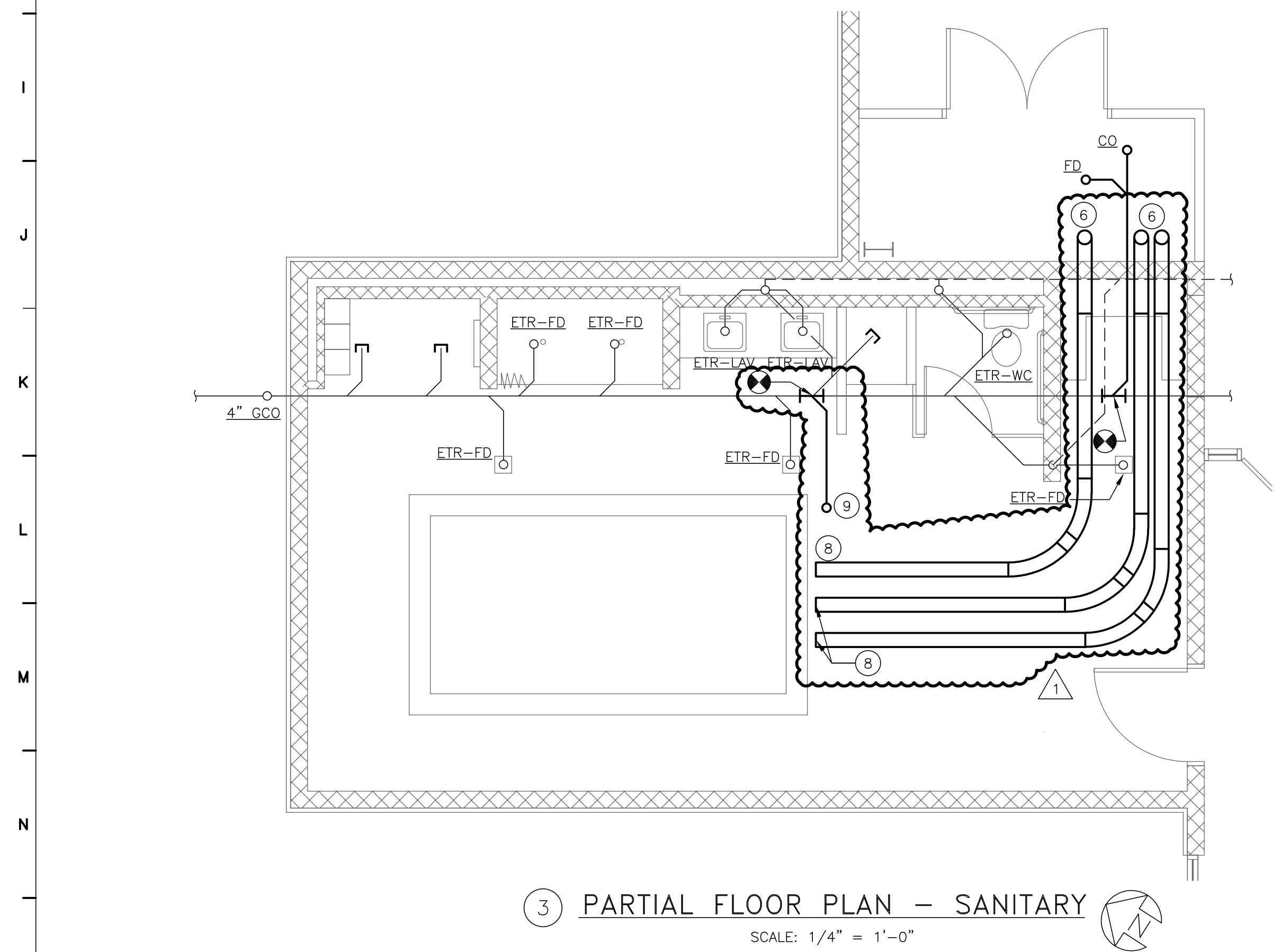
END OF ADDENDUM



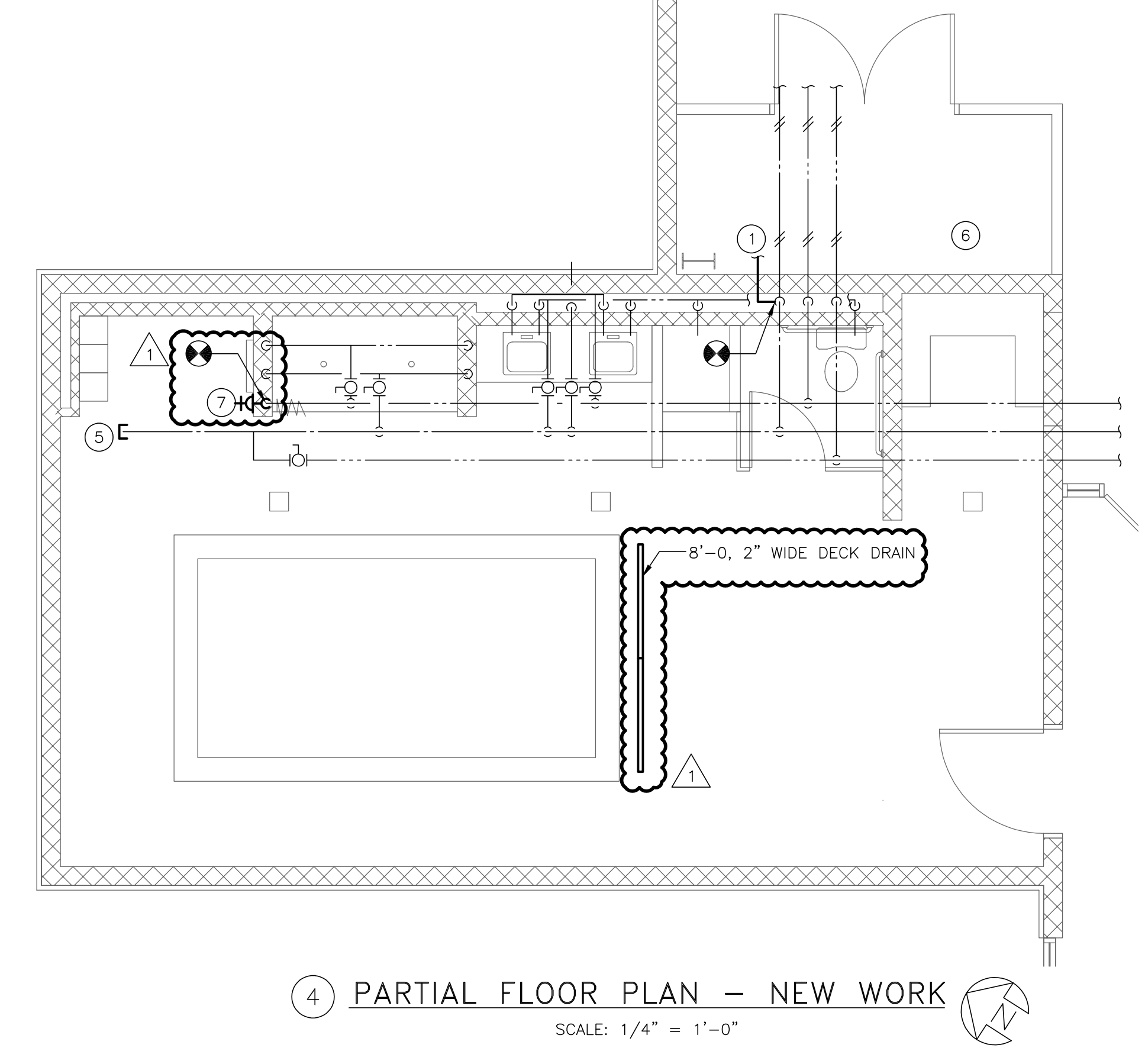
① PARTIAL FLOOR PLAN – UNDERSLAB DEMO
SCALE: 1/4" = 1'-0"



② PARTIAL FLOOR PLAN – DOMESTIC WATER DEMO
SCALE: 1/4" = 1'-0"



③ PARTIAL FLOOR PLAN – SANITARY
SCALE: 1/4" = 1'-0"



④ PARTIAL FLOOR PLAN – NEW WORK
SCALE: 1/4" = 1'-0"

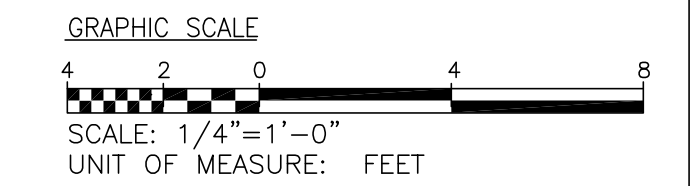
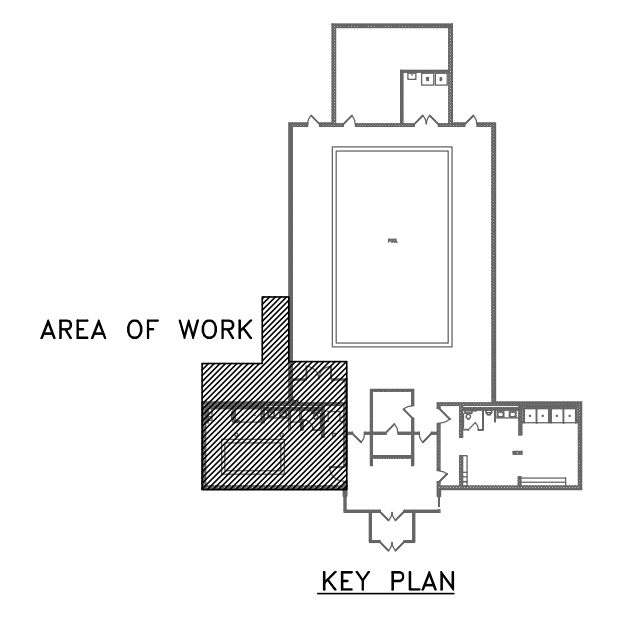
MECHANICAL DRAWING KEY NOTES:

- ① EXTEND NEW CW FROM EXISTING 2" CW TO THERAPY POOL EQUIPMENT.
- ② EXISTING WATER, SANITARY AND VENT CONNECTIONS TO REMAIN.
- ③ REMOVE EXISTING FLOOR DRAIN, SEAL SANITARY PIPE AND CAP FLUSH WITH THE FLOOR.
- ④ REMOVE EXISTING WATER CLOSET, SEAL SANITARY PIPE AND CAP FLUSH WITH THE FLOOR.
- ⑤ CAP EXISTING PIPE
- ⑥ PROVIDE 6" PVC CONDUIT WITH 45° SWEEP ELBOWS. COORDINATE INVERT WITH EXISTING SANITARY AND WITH POOL CONTRACTOR. 45° SWEEP ELBOWS TO BE PROVIDED IN BOTH THE VERTICAL AND HORIZONTAL.
- ⑦ EXTEND NEW PIPING FROM EXISTING COLD WATER AND PROVIDE NEW HOSE BIB.
- ⑧ COORDINATE FINAL TERMINATION POINT & INVERT OF PIPING WITH POOL CONTRACTOR.
- ⑨ 4" SAN UP TO DECK DRAIN

dbf DAVIS BOWEN & FRIEDEL, INC.
ARCHITECTS, ENGINEERS & SURVEYORS
SALISBURY, MARYLAND ■ MILFORD, DELAWARE
410.543.9091 302.424.1441

rmf RMF ENGINEERING INC.
100 EAST MAIN STREET, Ste. 301
SALISBURY, MD 21801
P: 443.736.1638 F: 443.736.1639

- General Notes:
1. ALL SUPPLY DUCTS LOCATED IN ATTIC SPACES TO BE INSULATED TO MIN. R-8.
 2. ALL JOINTS AND SEAMS OF AIR DUCTS, AIR HANDLERS AND FILTER BOXES ARE TO BE SEALED.
 3. REFRIGERANT LINESET TO BE INSULATED TO MIN. R-3.
 4. HVAC CONTRACTOR TO PROVIDE MANUFACTURER MANUALS FOR HVAC SYSTEMS TO THE OWNER PRIOR TO PROJECT CLOSE OUT.
 5. COORDINATE THE LOCATION OF ALL EQUIPMENT, PIPING AND DUCTWORK WITH ALL OTHER TRADES (PLUMBING, ELECTRICAL, ETC.) BEFORE INSTALLATION.
 6. PROVIDE BALANCING DAMPERS ON DUCT TAKE-OFF TO DIFFUSERS, AND GRILLES, AND REGISTERS, DESPITE WHETHER DAMPERS ARE SPECIFIED AS PART OF THE DIFFUSER, OR GRILLE AND REGISTER ASSEMBLY.
 7. FIELD VERIFY EXACT LOCATION OF THERMOSTAT WITH PROJECT MANAGER.
 8. HVAC CONTRACTOR TO VERIFY EXACT LOCATION OF OUTDOOR HEAT PUMP UNITS PER OWNER/AHJ.
 9. SIZE AND ROUTE RS/RL TO OUTDOOR HEAT PUMP UNITS PER MANUFACTURER'S RECOMMENDATION.
 10. AIR DEVICE RUNOUT SIZES SHALL MATCH NECK SIZES INDICATED BY THE AIR DEVICE SCHEDULE UNLESS OTHERWISE NOTED.
 11. REFER TO SANITARY, DOMESTIC WATER AND STORM WATER RISER DIAGRAMS FOR PIPE SIZES, VALVES, ETC., NOT SHOWN ON THIS PLAN.
 12. COORDINATE THE LOCATION OF ALL EQUIPMENT, PIPING AND DUCTWORK WITH ALL OTHER TRADES (PLUMBING, ELECTRICAL, ETC.) BEFORE INSTALLATION.
 13. PUBLIC SPACES SHALL HAVE AN ASSE 1016 POINT OF USE THERMOSTATIC MIXING VALVES (140°-110°) ON EACH PLUMBING FIXTURE BEING SUPPLIED HOT WATER.
 14. EXISTING RADIANT FLOOR HEATING SYSTEM WILL BE DISTURBED DUE TO WORK UNDER THIS CONTRACT. IT IS UNDERSTOOD BY THE OWNER THAT THE EXISTING SYSTEM WILL BE DISCONNECTED. TERMINATED POINTS DISTURBED WILL BE DECOMMISSIONED AND ABANDONED IN PLACE.



Revision		
▲	ADDENDUM #1	(09/03/2019)
Project: STOCKLEY CENTER THERAPY POOL RENOVATIONS GEORGETOWN, DELAWARE MC3511000031		
Set No.: BID SET	Sheet Title: PARTIAL FLOOR PLANS MECHANICAL	Sheet No.:
Proj.No.: US86B037.H02	Scale: AS NOTED	Date: 8/27/19
Dwn.By:		
THIS DRAWING, THE DESIGN AND CONSTRUCTION FEATURES DISCLOSED ARE PROPRIETARY TO DAVIS, BOWEN & FRIEDEL, INC., AND SHALL NOT BE ALTERED OR REUSED WITHOUT WRITTEN PERMISSION. COPYRIGHT © 2019		

M.I.1



DECK-O-DRAIN® Easy-to-Install Drainage System

DESCRIPTION

DECK-O-DRAIN drainage system provides an effective drainage system for concrete pool decks. Wherever specified, the system effectively collects and carries water away quickly from pool decks and other patio areas. Made of tough, long lasting PVC, the DECK-O-DRAIN system resists wear and is non-corrosive. Both the deck and subgrade receive watertight protection.

The unique non-directional design of DECK-O-DRAIN eliminates the need for right or left fittings. One attachment can be used for both by simply facing it in the direction needed. A flat contour profile allows a tight fit against any wall.

DECK-O-DRAIN drainage system installs easily. There are no trenches to dig or deep excavations to make. DECK-O-DRAIN can be used as a screed rail in final flatwork preparation.

USES

The product is ideal for use on pool decks, driveways, patios, etc. – anywhere water collects and needs to be carried away.

COLORS

Signature Series Redwood – Wood Grain Appearance.

Standard DECK-O-DRAIN is available in Desert Tan, Stone Gray, and Dura-White. (Black and Redwood are available by special order.)

FEATURES/BENEFITS

- Combined joint and drainage system with waterstop feature provides watertight, secure protection to concrete decks and subgrade.
- Eliminates digging trenches or making deep excavations ... saves time, labor, and money.

- Need for right or left fittings is eliminated ... one attachment can be used for both, simply by facing it in the desired direction.
- A flat contour profile allows tight fit against any wall.
- Non-corrosive, tough, long-lasting PVC construction resists wear.
- Can be used as a screed rail in final flatwork preparation.
- New configuration provides center channel for better flow, thicker wall dimensions, and a cutting ledge on the inside for top replacement.

PACKAGING

1 1/2" (38.1 mm) wide x 3 1/4" (82.55 mm) high x 10' (3.05 m) long

DECK-O-DRAIN is packaged 100' (30.48 m) per carton, including nailing clips, couplers, and protective tape over drain surface. NOTE: Nail clips should be placed on every other stake. Packaging includes 20 nail clips per box and nine couplers per carton.

APPLICATION

DECK-O-DRAIN installation is quick and easy.

STEP ONE - Grade sub-soil, sloping it toward drain location.

STEP TWO - Along planned path for drain, drive short, 3.5" (88.9 mm) wide stakes into the ground. Space them 30" (76.2 cm) apart. Use two (2) nailing clips for each 10' (3.05 m) section.

STEP THREE - Attach snap-on nailing clips and place drain over the stakes. Use couplers to ensure a

CONTINUED ON REVERSE SIDE...



A DIVISION OF W. R. MEADOWS®

www.deckoseal.com

P.O. BOX 397 • HAMPSHIRE, IL 60140 • PHONE: 800-542-POOL (7665) • FAX: 847-214-2268

straight, even line.

STEP FOUR - After carefully aligning, nail firmly to stakes.

STEP FIVE - Insert adapter. Can be hooked to 1.5" (38.1 mm) or 2" (50.8 mm) PVC pipe. Pipe can be adapted to any direction.

STEP SIX - Place concrete and trowel gradual slope to DECK-O-DRAIN.

STEP SEVEN - After concrete has set, install end plug, remove protective tape, and drain is ready to carry water away.

PRODUCT ACCESSORIES

DECK-O-DRAIN accessories are available for simplified job installation and can be viewed on our website.

Concrete expands and contracts with temperature and moisture changes. As the temperature rises or the moisture content of the concrete increases, expansion takes place. As the temperature drops, the concrete will contract. The provision to accommodate movement at predetermined locations with proper joint applications prevents the development of stresses that could rupture the concrete. Refer to our Control Joints #320 data sheet for a full listing of expansion joint products to protect pool decks from this movement. Consult with a structural engineer for proper placement.

LEED INFORMATION

May help contribute to LEED credits:

- IEQ Credit 3.1: Construction Indoor Air Quality Management Plan: During Construction
- MR Credit 2: Construction Waste Management
- MR Credit 4: Recycled Content
- MR Credit 5: Regional Materials
- SS Credit 6.1: Stormwater Design – Quantity Control
- SS Credit 6.2: Stormwater Design – Quality Control

LIMITED WARRANTY

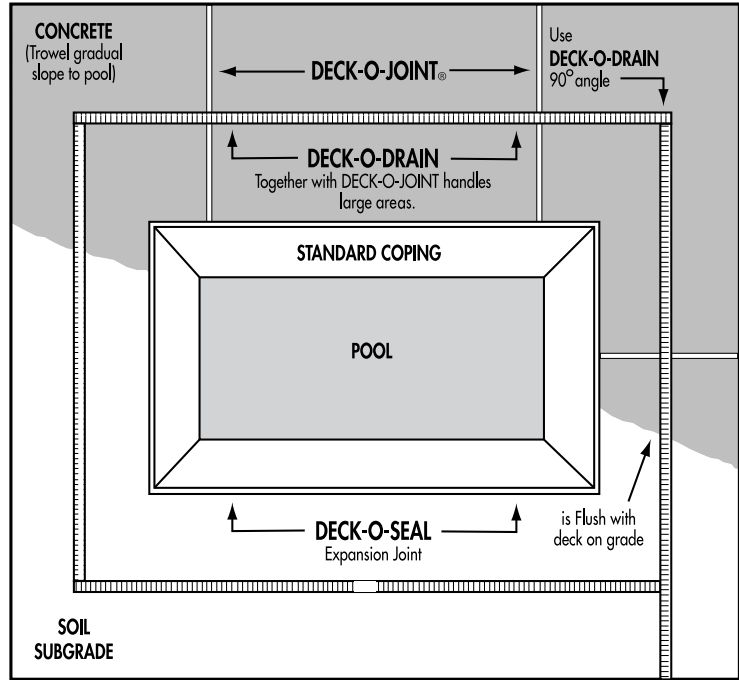
“DECK-O-SEAL®, A Division of W. R. MEADOWS, INC., warrants at the time and place we make shipment, our material will be of good quality and will conform with our published specifications in force on the date of acceptance of the order.” Read complete warranty. Copy furnished upon request.

Disclaimer

The information contained herein is included for illustrative purposes only, and to the best of our knowledge, is accurate and reliable. DECK-O-SEAL cannot however under any circumstances make any guarantee of results or assume any obligation or liability in connection with the use of this information. As DECK-O-SEAL has no control over the use to which others may put its product, it is recommended that the products be tested to determine if suitable for specific application and/or our information is valid in a particular circumstance. Responsibility remains with the architect or engineer, contractor and owner for the design, application and proper installation of each product. Specifier and user shall determine the suitability of products for specific application and assume all responsibilities in connection therewith.

TYPICAL POOL DECK APPLICATION

FIGURE #1(TOP VIEW)



Use DECK-O-DRAIN to direct run-off into lawn, garden or septic system.

FIGURE #2 (SIDE VIEW)

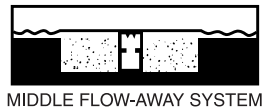
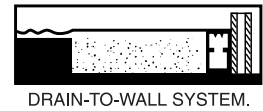


FIGURE #3 (SIDE VIEW)



For most recent data sheet, further LEED information, and MSDS, visit www.deckoseal.com.