

Date: March 2, 2022

ASI-02

Project: DeIDOT Georgetown Administration Building

Project No: T202180102

SJ Project No: 20069

The work herein shall be considered part of the bid documents for the referenced project and carried out in accordance with the following supplemental instructions issued in accordance with the Contract Documents without change in Contract Sum or Contract Time. Acknowledge receipt of addendum on the bid form as indicated.

Roof Insulation

XPS insulation for the roof is an acceptable alternative to for the polyiso accepted through the submittal if lead times are reduced. Sole sourcing on insulation is also acceptable only if the additional manufacturer will not void the system's warranty.

Provide pricing for the following at single use bathrooms A140A, B102 and B103:

- Deduct of epoxy flooring, epoxy integral base and 5/8" moisture resistant gypsum board at all restroom walls.
- Add ½" tile backer board, ceramic wall tile, ceramic floor tile, transition strips, and any additional accessories. Tile and backer board installation at all restroom walls.

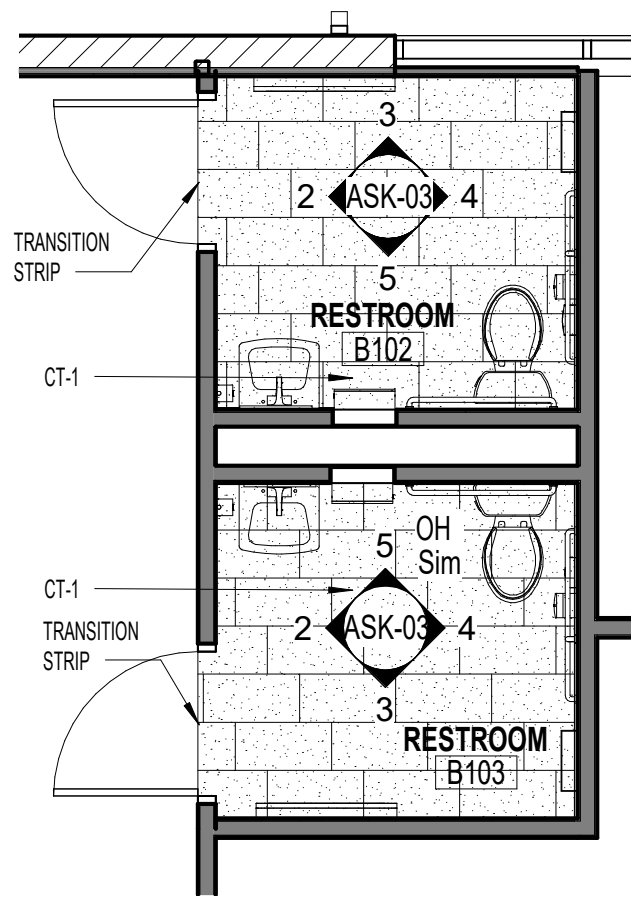
Ceramic Tiles at Single Use Bathrooms

Provide alternate pricing for the following at single use bathrooms A140A, B102 and B103:

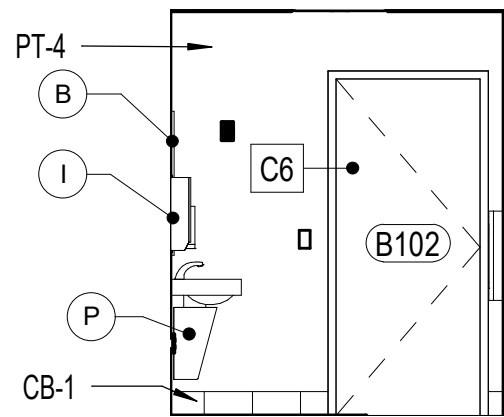
- Deduct of epoxy flooring, epoxy integral base. Deduct 5/8" moisture resistant gypsum board at wet wall only.
- Add ½" tile backer board, ceramic wall tile, ceramic floor tile, transition strips, and any additional accessories. Tile and backer board installation at wet wall only. Ceramic base at all other walls.

Basis of Design:

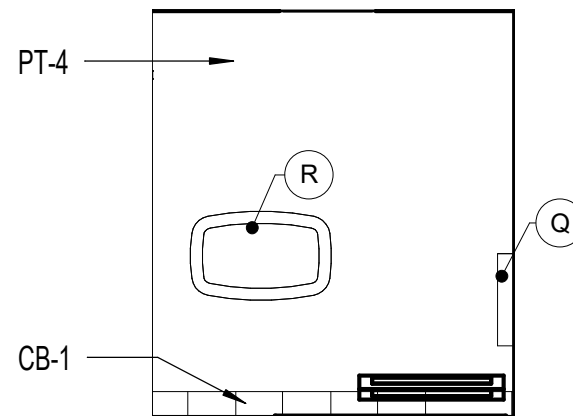
- Floor Tile (CT-1)– Daltile Portfolio 12" by 24"
- Wall Tile (CT-2) – Daltile Fabric Art 12" by 24"
- Ceramic Cove Base for alternate (CB-1) - Daltile Portfolio 6"X 12"
- Transition Strip – Schluter RENO-TK



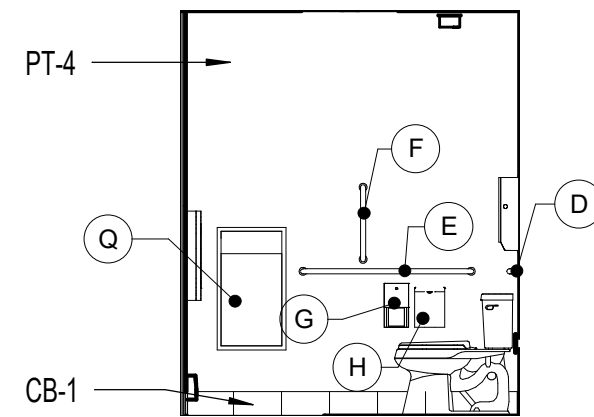
1 BATHROOM FINISH PLAN
ASK-03 SCALE: 1/4" = 1'-0"



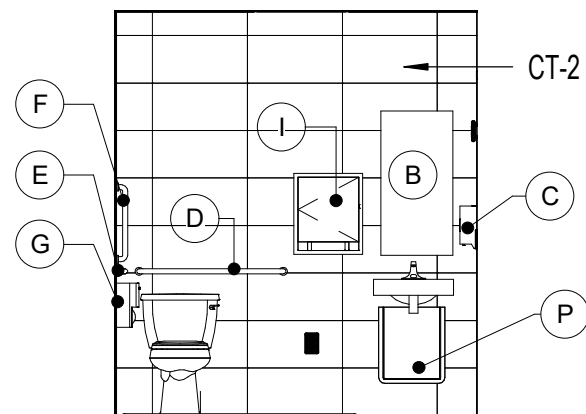
2 INTERIOR ELEVATION
ASK-03 SCALE: 1/4" = 1'-0"



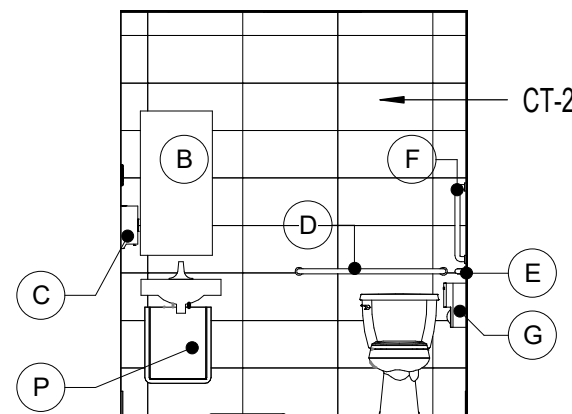
3 INTERIOR ELEVATION
ASK-03 SCALE: 1/4" = 1'-0"



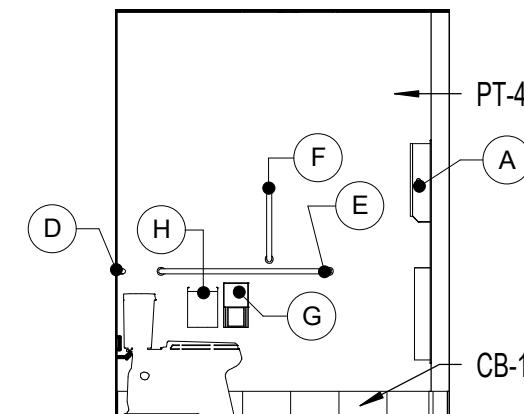
4 INTERIOR ELEVATION
ASK-03 SCALE: 1/4" = 1'-0"



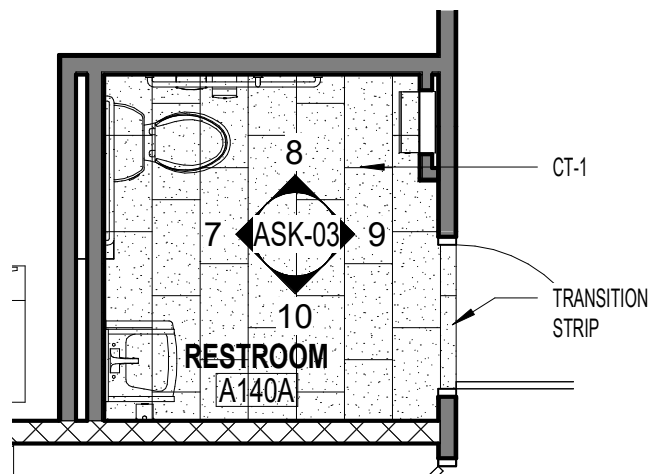
5 INTERIOR ELEVATION
ASK-03 SCALE: 1/4" = 1'-0"



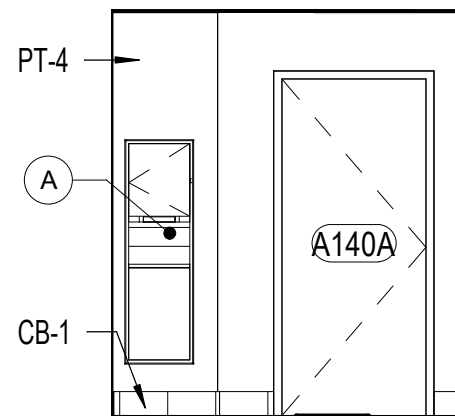
7 INTERIOR ELEVATION
ASK-03 SCALE: 1/4" = 1'-0"



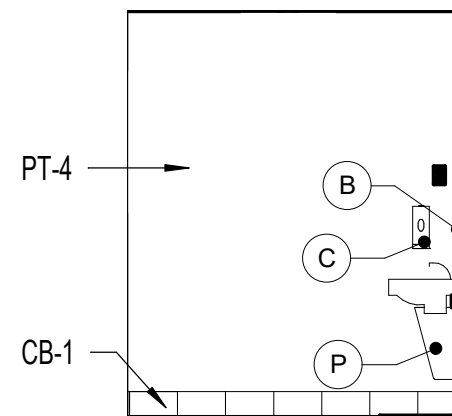
8 INTERIOR ELEVATION
ASK-03 SCALE: 1/4" = 1'-0"



6 BATHROOM FINISH PLAN
ASK-03 SCALE: 1/4" = 1'-0"



9 INTERIOR ELEVATION
ASK-03 SCALE: 1/4" = 1'-0"



10 INTERIOR ELEVATION
ASK-03 SCALE: 1/4" = 1'-0"

BASIS OF DESIGN:

- CT-1 DALTILE PORTFOLIO 12" BY 24"
- CT-2 DALTILE FABRIC ART 12" BY 24"
- CB-1 DALTILE PORTFOLIO 6"X 12"
- TRANSITION STRIP - SCHLUTER RENO-TK

ALTERNATE PRICING

STUDIO JAED
ARCHITECTS ■ ENGINEERS ■ FACILITIES SOLUTIONS
Website: www.StudioJAED.com Email: info@StudioJAED.com

DELAWARE OFFICE
2500 WRANGLE HILL ROAD, STE. 110
BEAR, DELAWARE 19701
P: (302) 832-1652

PROVIDENCE OFFICE
42 WEYBOSSET STREET, STE. 403
PROVIDENCE, RHODE ISLAND 02903
P: (401) 648-0884

MARYLAND OFFICE
213 FRONT STREET, P.O. BOX 254
CRUMPTON, MARYLAND 21628

DELAWARE DEPARTMENT OF TRANSPORTATION
GEORGETOWN ADMINISTRATION BUILDING
RENOVATION / EXPANSION
23697 DUPONT BLVD, GEORGETOWN, DELAWARE 19947

This drawing is the property of STUDIOJAED and is prepared for the exclusive use of its clients at the location indicated. No other use is authorized or intended.

03/02/22
DATE
20069
PROJECT NO.

A-402 / A-801
SHEET NO.
ASK-03