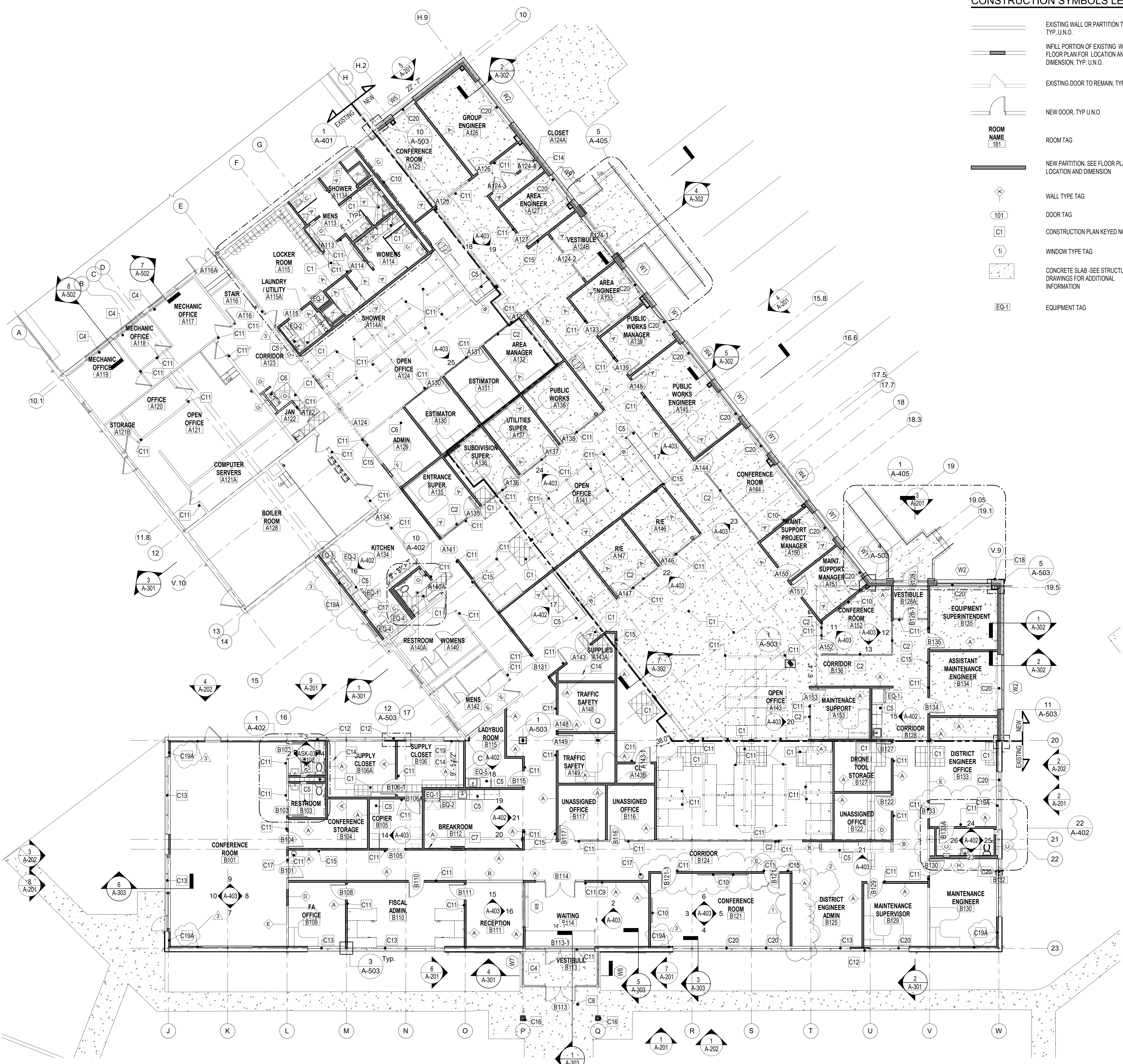


THE RECEIVER OF THESE PLANS BY ANY MEANS (PHOTOCOPYING, ELECTRONIC TRANSMISSION, OR OTHERWISE) IS HEREBY ADVISED THAT THE INFORMATION CONTAINED HEREIN IS UNCLASSIFIED EXCEPT WHERE SHOWN OTHERWISE. UNCLASSIFIED INFORMATION IS NOT TO BE RELEASED OR DISSEMINATED TO THE PUBLIC OR TO ANY OTHER PERSON OR ENTITY WITHOUT THE EXPRESS WRITTEN PERMISSION OF THE ARCHITECT. THE ARCHITECT'S LIABILITY IS LIMITED TO THE DESIGN AND CONSTRUCTION OF THE PROJECT AND DOES NOT EXTEND TO ANY OTHER MATTER. THE ARCHITECT'S LIABILITY IS LIMITED TO THE DESIGN AND CONSTRUCTION OF THE PROJECT AND DOES NOT EXTEND TO ANY OTHER MATTER.



**CONSTRUCTION SYMBOLS LEGEND**

- EXISTING WALL OR PARTITION TO REMAIN, TYP. U.N.O.
- INFILL PORTION OF EXISTING WALL. SEE FLOOR PLAN FOR LOCATION AND DIMENSION. TYP. U.N.O.
- EXISTING DOOR TO REMAIN, TYP. U.N.O.
- NEW DOOR, TYP. U.N.O.
- ROOM NAME TAG
- NEW PARTITION. SEE FLOOR PLAN FOR LOCATION AND DIMENSION
- WALL TYPE TAG
- DOOR TAG
- CONSTRUCTION PLAN KEYED NOTE TAG
- WINDOW TYPE TAG
- CONCRETE SLAB - SEE STRUCTURAL DRAWINGS FOR ADDITIONAL INFORMATION
- EQUIPMENT TAG

**CONSTRUCTION NOTES**

1. SEE GENERAL NOTES ON G-001 FOR ADDITIONAL INFORMATION.
2. REFER TO FINISH SCHEDULES FOR ALL FINISHES, FLOOR PATTERNS, AND COLOR INFO.
3. INTERIOR PARTITION TYPE TAGS APPLY TO THE ENTIRE LENGTH OF WALL INDICATED BY THAT TAG, REGARDLESS OF OPENINGS WITHIN THAT WALL. TYP. UNO
4. ALL DIMENSIONS ARE TO FACE OF MASONRY, ROUGH FRAME, OR CENTER LINE OF COLUMN, TYPICAL UNLESS OTHERWISE NOTED. CONTRACTOR SHALL VERIFY ALL DIMENSIONS PRIOR TO CONSTRUCTION, AND NOTIFY ARCHITECT IMMEDIATELY OF ANY DISCREPANCIES.
5. PAINT ALL EXPOSED SURFACES, INCLUDING ALL GYPSUM BOARD CEILINGS AND SOFFITS.

**CONSTRUCTION PLANS - KEYED SCOPE NOTES**

KEY	NOTE
C1	FURNISH AND INSTALL NEW 4" CONCRETE SLAB OVER VAPOR BARRIER AND 4" CRUSHED STONE BASE. #4 DOWELS @ 24" O.C. INTO EXISTING SLAB TYP.
C2	FURNITURE GLASS WALL. NOT IN CONTRACT.
C3	FURNISH AND INSTALL NEW HM FRAMED/ CASED OPENING - SEE DOOR SCHEDULE FOR MORE INFORMATION
C4	FURNISH AND INSTALL NEW 2HR RATED FIRE SHUTTER AT EXISTING HM FRAME/ WINDOW. SEE TYPICAL SECTION FOR MORE INFORMATION.
C5	FURNISH AND INSTALL NEW CASEWORK WITH PLAM COUNTER TOP. REFER TO CASEWORK DETAILS FOR MORE INFORMATION.
C6	FURNISH AND INSTALL NEW ADA COMPLIANT HIGH/ LOW WATER COOLER WITH BOTTLE FILLER. SEE PLUMBING PLANS FOR MORE INFORMATION.
C7	FURNISH AND INSTALL NEW SOUND ATTENUATION FABRIC WRAP PANELS - SEE ELEVATIONS FOR MORE INFORMATION
C8	FURNISH AND INSTALL POWDER COATED STEEL PEDESTAL WITH DUAL MOUNT FOR CARD READER AND DOOR OPERATOR.
C9	FURNISH AND INSTALL NEW VINYL WALL LOGO- SEE ELEVATIONS FOR MORE INFORMATION.
C10	FURNISH AND INSTALL NEW FLAT SCREEN TELEVISION WITH ASSOCIATED WALL MOUNT BY OTHERS. SEE ELEVATIONS AND ELECTRICAL PLANS FOR MORE INFORMATION
C11	FURNISH AND INSTALL NEW ADA SIGNAGE WITH BRAILLE AT CUBICLE WALLS, ARCHITECTURAL WALLS, GYPSUM BOARD WALLS, AND ALUMINUM STOREFRONTS. PROVIDE BLANK REAR PLATE WHERE SIGNAGE IS INSTALLED ON GLASS - SEE TYPICAL SIGNAGE DETAILS AND DOOR SCHEDULE FOR MORE INFO
C12	REMOVE HARDWARE OF OPERABLE WINDOW TO MAKE INOPERABLE. INSTALL PRIVACY FILM ON GLASS. CLOSE OFF WINDOW WITH NEW 2 1/2" STUD AND GYPSUM WALLBOARD FROM MULLION TO MULLION.
C13	FURNISH AND INSTALL NEW MEGHO SHADE WINDOW TREATMENT. CONTRACTOR TO VERIFY ALL WINDOW WIDTHS IN FIELD PRIOR TO FABRICATION
C14	NEW WALL MOUNTED SHELVES. SEE CASEWORK SECTION F ON A-404.
C15	FURNISH AND INSTALL NEW ADA COMPLIANT RECESSED FIRE EXTINGUISHER CABINET.
C16	1'-0" SQUARE ALUMINUM COLUMN COVER
C17	BOTTLE COOLER BY OWNER
C18	REINSTALL EXISTING WEATHER MONITORING SYSTEM.
C19	FURNISH AND INSTALL 5/8" GYPSUM WALLBOARD OVER 3/4" METAL HAT CHANNEL, THE ENTIRE LENGTH OF WALL.
C19A	FURNISH AND INSTALL 5/8" GYPSUM WALLBOARD OVER 3 5/8" METAL HAT CHANNEL, THE ENTIRE LENGTH OF WALL.
C20	FURNISH AND INSTALL NEW MEGHO DUAL SHADE WINDOWS TREATMENT. CONTRACTOR TO VERIFY ALL WINDOW WIDTHS IN THE FIELD PRIOR TO FABRICATION

**EQUIPMENT SCHEDULE**

Mark	Comments
EQ-1	
EQ-2	COUNTERTOP MICROWAVE
EQ-3	30" WIDE ELECTRIC SLIDE-IN COOKTOP WITH OVEN
EQ-4	ICE CUBE MACHINE
EQ-5	UNDERCOUNTER REFRIGERATOR
EQ-6	30" WIDE RANGE HOOD EXHAUST
EQ-7	COMBINATION CLOTHES WASHER / DRYER

**STUDIOJAED**  
 ARCHITECTS & ENGINEERS ■ FACILITIES SOLUTIONS  
 Website: www.studiojaed.com  
 Email: info@studiojaed.com  
 42 WEST BASSETT STREET, STE. 403  
 273 FRONT STREET, P.O. BOX 24  
 CRUMFORD, MARYLAND 21030  
 410-458-5888

**CONSULTANT**

THIS DRAWING IS THE PROPERTY OF STUDIOJAED AND IS PREPARED FOR THE EXCLUSIVE USE OF ITS CLIENTS AT THE LOCATION INDICATED. NO OTHER USE IS AUTHORIZED OR INTENDED.

THE PROFESSIONAL SERVICES OF THE ARCHITECT ARE UNDERTAKEN FOR AND ARE PERFORMED IN THE INTEREST OF NAME OF PERSON EMPLOYING ARCHITECT. NO CONTRACTUAL OBLIGATION IS ASSUMED BY THE ARCHITECT FOR THE BENEFIT OF ANY OTHER PERSON INVOLVED IN THE PROJECT.

SIGNATURE: \_\_\_\_\_  
 DATE OF SIGNATURE: \_\_\_\_\_  
 DATE OF REGISTRATION EXPIRATION: \_\_\_\_\_  
 ARCHITECT / ENGINEER SEAL

**DELAWARE DEPARTMENT OF TRANSPORTATION**  
**GEORGETOWN ADMINISTRATION BUILDING**  
 RENOVATION/ EXPANSION  
 23697 DUPONT BLVD, GEORGETOWN, DELAWARE 19847

**REVISIONS**

Mark	Date	Description
1	3/7/2022	ASH-02
2	4/7/2022	ASH-05
3	5/23/2022	ASH-08

SHEET TITLE  
**CONSTRUCTION FLOOR PLAN**

ISSUED FOR CONSTRUCTION  
 JANUARY 26, 2022

DRAWN	CHKD	PROJECT NO.
AB	PG	20069

SHEET NO.  
**A-101**

**1 CONSTRUCTION FLOOR PLAN**  
 SCALE: 1/8" = 1'-0"

