

**ASI-15 REV #1**

Date: September 6, 2022

Project: DeIDOT Georgetown Administration Building

Project No: T202180102

SJ Project No: 20069

---

The work herein shall be considered part of the bid documents for the referenced project and carried out in accordance with the following supplemental instructions issued in accordance with the Contract Documents without change in Contract Sum or Contract Time. Acknowledge receipt of addendum on the bid form as indicated.

---

**Changes to Drawings**

ESK101 – Electrical Demo Plan

- a. Showed demo outdoor wallpacks with keynote to be temporarily removed.

ESK102

- a. Changed one W/D receptacle from 208V to standard 120V.

ESK103

- a. Showed new outdoor wallpacks with note to be reinstalled.

ESK104

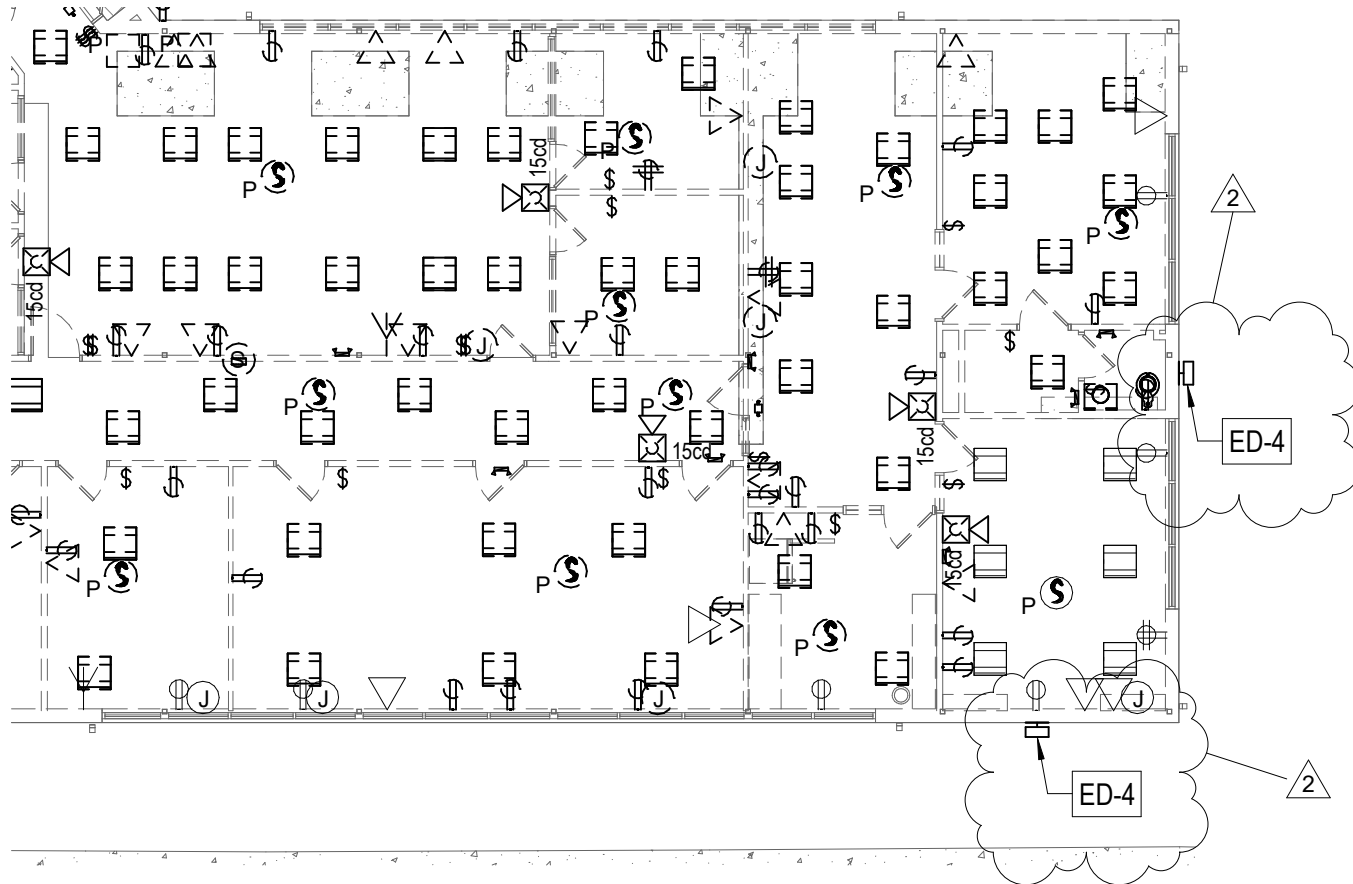
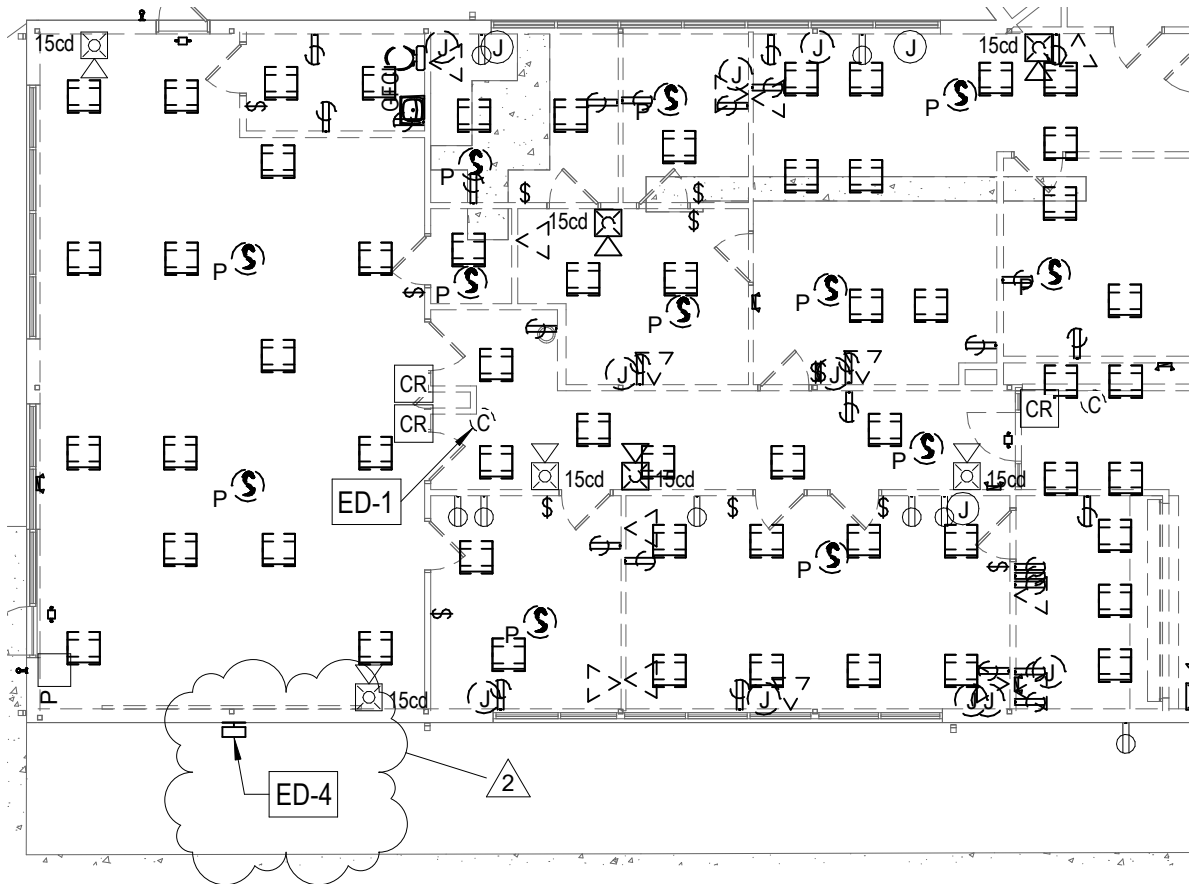
- a. Adjusted panel schedule for panel PLB with updated W/D circuits.

**See Revised Drawings:**

1. ESK101
2. ESK102
3. ESK103
4. ESK104

ELECTRICAL DEMOLITION NOTES:

**ED-4** DISCONNECT AND REMOVE WALLPACK LIGHT FIXTURE WITH WIRING. RETAIN FOR RELOCATION.



**1** ELECTRICAL PARTIAL DEMOLITION PLAN  
 ESK101 3/32" = 1'-0"

**STUDIO JAED**  
 ARCHITECTS ■ ENGINEERS ■ FACILITIES SOLUTIONS  
 Website: www.StudioJAED.com Email: info@StudioJAED.com

DELAWARE OFFICE: 2500 WRANGLE HILL ROAD, STE. 110 BEAR, DELAWARE 19701 P: (302) 832-1652  
 PROVIDENCE OFFICE: 42 WEYBOSSET STREET, STE. 403 PROVIDENCE, RHODE ISLAND 02903 P: (401) 648-0884  
 MARYLAND OFFICE: 213 FRONT STREET, P.O. BOX 254 CRUMPTON, MARYLAND 21628

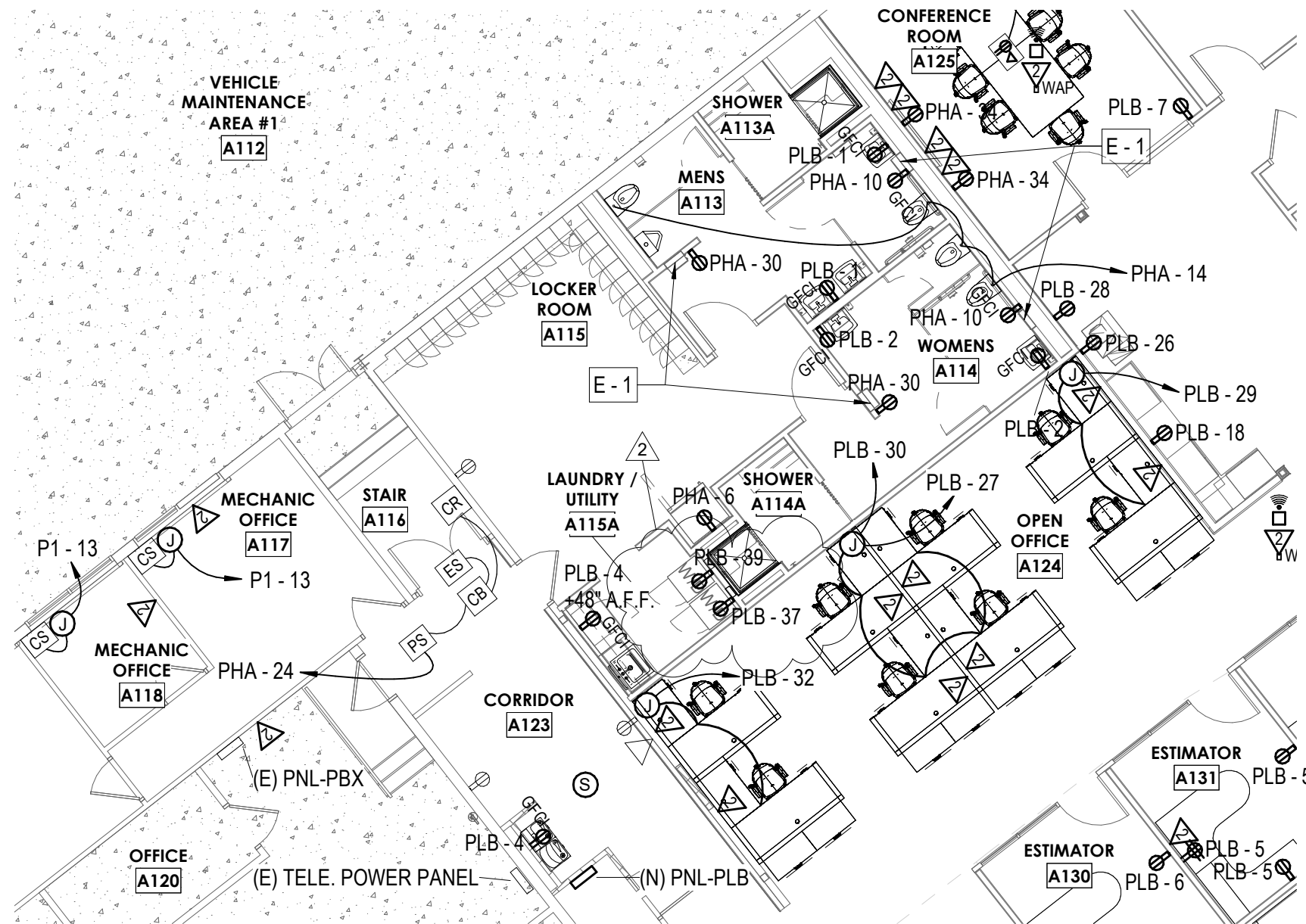
DELAWARE DEPARTMENT OF TRANSPORTATION  
**GEORGETOWN ADMINISTRATION BUILDING**  
 RENOVATION / EXPANSION  
 23697 DUPONT BLVD, GEORGETOWN, DELAWARE 19947

This drawing is the property of STUDIOJAED and is prepared for the exclusive use of its clients at the location indicated. No other use is authorized or intended.

△ ASI #15 REV #1

08/31/22  
 DATE  
 20069  
 PROJECT NO.

\_\_\_\_\_  
 SHEET NO.  
**ESK101**



1 **ELECTRICAL NEW SKETCH**  
 ESK102 1/8" = 1'-0"

**STUDIO JAED**  
 ARCHITECTS ■ ENGINEERS ■ FACILITIES SOLUTIONS  
 Website: www.StudioJAED.com Email: info@StudioJAED.com

DELAWARE OFFICE: 2500 WRANGLE HILL ROAD, STE. 110 BEAR, DELAWARE 19701 P: (302) 832-1652  
 PROVIDENCE OFFICE: 42 WEYBOSSET STREET, STE. 403 PROVIDENCE, RHODE ISLAND 02903 P: (401) 648-0884  
 MARYLAND OFFICE: 213 FRONT STREET, P.O. BOX 254 CRUMPTON, MARYLAND 21628

DELAWARE DEPARTMENT OF TRANSPORTATION  
**GEORGETOWN ADMINISTRATION BUILDING**  
 RENOVATION / EXPANSION  
 23697 DUPONT BLVD, GEORGETOWN, DELAWARE 19947

This drawing is the property of STUDIOJAED and is prepared for the exclusive use of its clients at the location indicated. No other use is authorized or intended.

2 ASI #15 REV #1

08/31/22  
 DATE SHEET NO.  
 20069 PROJECT NO. **ESK102**



# Branch Panel: PLB

Location: JAN A122  
 Supply From: (E) SWBD - MAIN ELECTRICAL PANEL  
 Mounting: Surface  
 Enclosure: NEMA 1


Volts: 120/208 Wye  
 Phases: 3  
 Wires: 4

A.I.C. Rating: 14,000  
 Mains Type: MLO  
 Mains Rating: 225 A  
 MCB Rating:

Notes:

CKT	Circuit Description	Trip	Poles	Wire Size & Conduit	A		B		C		Wire Size & Conduit	Poles	Trip	Circuit Description	CKT
1	Recepts. - A113 MENS AUTO FAUCETS	20 A	1	2#12 + 1#12G - 3/4"C	0.36 kVA	0.36 kVA					2#12 + 1#12G - 3/4"C	1	20 A	Recepts. - A114 WOMENS AUTO FAUCETS	2
3	Recepts. - A124A ADMIN	20 A	1	2#12 + 1#12G - 3/4"C			0.72 kVA	0.36 kVA			2#12 + 1#12G - 3/4"C	1	20 A	Recepts. - A123/A115A CORRIDOR/LAUNDRY	4
5	Recepts. - A124C ESTIMATOR	20 A	1	2#12 + 1#12G - 3/4"C					0.72 kVA	0.72 kVA	2#12 + 1#12G - 3/4"C	1	20 A	Recepts. - A124B ESTIMATOR	6
7	Recepts. - A125 CONFERENCE	20 A	1	2#12 + 1#12G - 3/4"C	0.54 kVA	0.72 kVA					2#12 + 1#12G - 3/4"C	1	20 A	Recepts. - A124D AREA MANAGER	8
9	Recepts. - A127 AREA ENGI	20 A	1	2#12 + 1#12G - 3/4"C			0.72 kVA	0.90 kVA			2#10 + 1#10G - 3/4"C	1	20 A	Recepts. - A126 GROUP ENGI	10
11	Recepts. - A131 PUBLIC WORKS PLAN REV	20 A	1	2#10 + 1#10G - 3/4"C					0.72 kVA	0.72 kVA	2#10 + 1#10G - 3/4"C	1	20 A	Recepts. - A130 AREA ENGI	12
13	Recepts. - A136 SUBDIV SUPER	20 A	1	2#12 + 1#12G - 3/4"C	0.72 kVA	0.72 kVA					2#12 + 1#12G - 3/4"C	1	20 A	Recepts. - A135 ENTRANCE SUPER	14
15	Recepts. - A138 PLAN REV	20 A	1	2#12 + 1#12G - 3/4"C			0.72 kVA	0.72 kVA			2#12 + 1#12G - 3/4"C	1	20 A	Recepts. - A137 UTILITIES SUPER	16
17	Recept. - A143 OPEN OFFICE	20 A	1	2#12 + 1#12G - 3/4"C					0.18 kVA	0.72 kVA	2#12 + 1#12G - 3/4"C	1	20 A	Recept. - A143 OPEN OFFICE SCANNER	18
19	Recepts. - A144 TV	20 A	1	2#10 + 1#10G - 3/4"C	0.72 kVA	0.72 kVA					2#10 + 1#10G - 3/4"C	1	20 A	Recepts. - A144 CONFERENCE	20
21	Recepts. - A146 R/E	20 A	1	2#10 + 1#10G - 3/4"C			0.72 kVA	0.72 kVA			2#10 + 1#10G - 3/4"C	1	20 A	Recepts. - A145 PUBLIC WORKS ENGI	22
23	Recept. - B112 REFRIGERATOR BREAK	20 A	1	2#10 + 1#10G - 3/4"C					0.18 kVA	0.72 kVA	2#10 + 1#10G - 3/4"C	1	20 A	Recepts. - A147 R/E	24
25	Recept. - CORRIDOR PRINTER	20 A	1	2#12 + 1#12G - 3/4"C	0.18 kVA	0.18 kVA					2#12 + 1#12G - 3/4"C	1	20 A	Recept. - CORRIDOR PRINTER NORTH	26
27	JB - A124 OPEN OFFICE - MID	20 A	1	2#12 + 1#12G - 3/4"C			0.54 kVA	0.18 kVA			2#12 + 1#12G - 3/4"C	1	20 A	Recept. - CORRIDOR COPIER NORTH	28
29	JB - A124 OPEN OFFICE - EAST	20 A	1	2#12 + 1#12G - 3/4"C					0.54 kVA	0.54 kVA	2#12 + 1#12G - 3/4"C	1	20 A	JB - A124 OPEN OFFICE - MID	30
31	JB - A132 OPEN OFFICE - EAST	20 A	1	2#12 + 1#12G - 3/4"C	0.54 kVA	0.54 kVA					2#12 + 1#12G - 3/4"C	1	20 A	JB - A124 OPEN OFFICE - WEST	32
33	JB - A141 OPEN OFFICE - MID	20 A	1	2#12 + 1#12G - 3/4"C			0.54 kVA	0.54 kVA			2#12 + 1#12G - 3/4"C	1	20 A	JB - A141 OPEN OFFICE - EAST	34
35	JB - A141 OPEN OFFICE - WEST	20 A	1	2#12 + 1#12G - 3/4"C					0.54 kVA	0.54 kVA	2#12 + 1#12G - 3/4"C	1	20 A	JB - A141 OPEN OFFICE - MID	36
37	Recept. - A115A WASHER/DRYER	20 A	1	2#12 + 1#12G - 3/4"C	0.18 kVA	1.40 kVA					2#10 + 1#10G - 3/4"C	1	20 A	Lights - NE	38
39	Recept. - A115A WASHER/DRYER	20 A	1	2#12 + 1#12G - 3/4"C			0.18 kVA	1.19 kVA			2#10 + 1#10G - 3/4"C	1	20 A	Lights - WEST	40
41									1.39 kVA		2#10 + 1#10G - 3/4"C	1	20 A	Lights - OPEN OFFICES	42
<b>Total Load:</b>					7.88 kVA		8.75 kVA		8.23 kVA						
<b>Total Amps:</b>							66 A								

Notes: PROVIDE NEW CIRCUIT BREAKERS AS REQUIRED. ALL INDICATED WIRE AND CONDUIT SIZES ARE NEW.



**STUDIO JAED**  
 ARCHITECTS ■ ENGINEERS ■ FACILITIES SOLUTIONS  
 Website: www.StudioJAED.com Email: info@StudioJAED.com

DELAWARE OFFICE: 2500 WRANGLE HILL ROAD, STE. 110 BEAR, DELAWARE 19701 P: (302) 832-1652  
 PROVIDENCE OFFICE: 42 WEYBOSSET STREET, STE. 403 PROVIDENCE, RHODE ISLAND 02903 P: (401) 648-0884  
 MARYLAND OFFICE: 213 FRONT STREET, P.O. BOX 254 CRUMPTON, MARYLAND 21628

DELAWARE DEPARTMENT OF TRANSPORTATION  
**GEORGETOWN ADMINISTRATION BUILDING**  
 RENOVATION / EXPANSION  
 23697 DUPONT BLVD, GEORGETOWN, DELAWARE 19947

This drawing is the property of STUDIOJAED and is prepared for the exclusive use of its clients at the location indicated. No other use is authorized or intended.

ASI #15 REV #1

08/31/22  
 DATE  
 20069  
 PROJECT NO.

SHEET NO.  
**ESK104**