

ASI-16

Date: September 19, 2022

Project: DelDOT Georgetown Administration Building

Project No: T202180102

SJ Project No: 20069

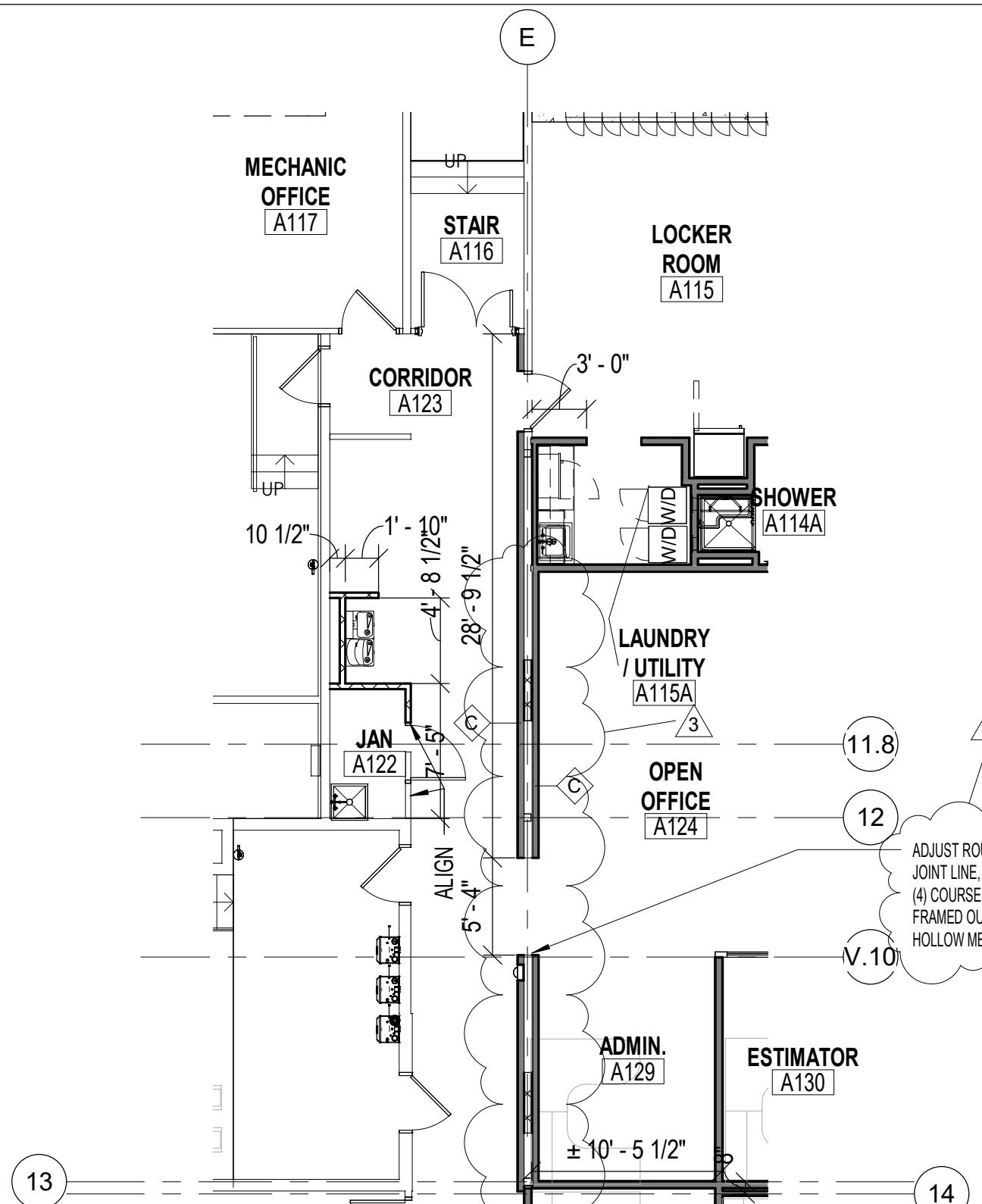
The work herein shall be considered part of the bid documents for the referenced project and carried out in accordance with the following supplemental instructions issued in accordance with the Contract Documents without change in Contract Sum or Contract Time. Acknowledge receipt of addendum on the bid form as indicated.

Changes to Drawings

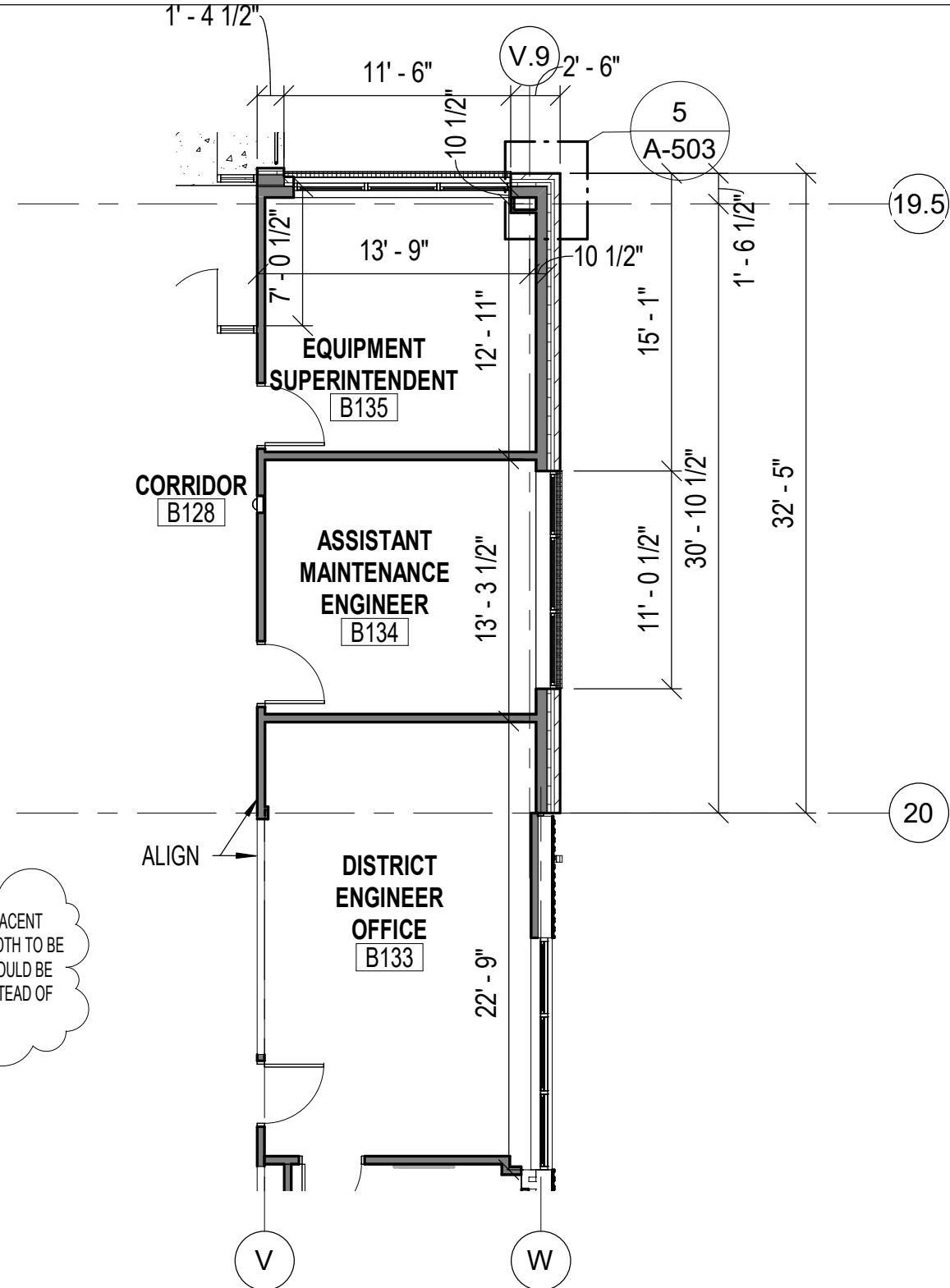
1. A-101 Construction Floor Plan
 - a. Added additional studs along wall in Open Office A124. See revised sketch ASK-05.
2. ESK105 – Electrical Power Plan
 - a. Added new receptacle in kitchen A134.
 - b. Provided keynote ED-8 to remove de-energized receptacles in the kitchen.
 - c. Relocated electrical panel PLB and added note.
3. ESK106 – Electrical Lighting Plan
 - a. Relocated wallpack fixture to side of canopy and provided new light fixture under canopy with power details.
4. ESK107 – Electrical Panel Schedule
 - a. Added circuit breaker and wiring for new kitchen receptacle.

See Revised Drawings:

1. ASK-05
2. ESK105
3. ESK106
4. ESK107



1 PARTIAL CONSTRUCTION FLOOR PLAN
ASK-05 SCALE: 1/8" = 1'-0"



2 PARTIAL CONSTRUCTION FLOOR PLAN
ASK-05 SCALE: 1/8" = 1'-0"

ADJUST ROUGH OPENING TO ADJACENT JOINT LINE, WITH THE ROUGH WIDTH TO BE (4) COURSES LONG. OPENING SHOULD BE FRAMED OUT WITH DRYWALL INSTEAD OF HOLLOW METAL FRAME.

STUDIO JAED
ARCHITECTS ■ ENGINEERS ■ FACILITIES SOLUTIONS
Website: www.StudioJAED.com Email: info@StudioJAED.com

DELAWARE OFFICE: 2500 WRANGLE HILL ROAD, STE. 110 BEAR, DELAWARE 19701 P: (302) 832-1652

PROVIDENCE OFFICE: 42 WEYBOSSET STREET, STE. 403 PROVIDENCE, RHODE ISLAND 02903 P: (401) 648-0884

MARYLAND OFFICE: 213 FRONT STREET, P.O. BOX 254 CRUMPTON, MARYLAND 21628

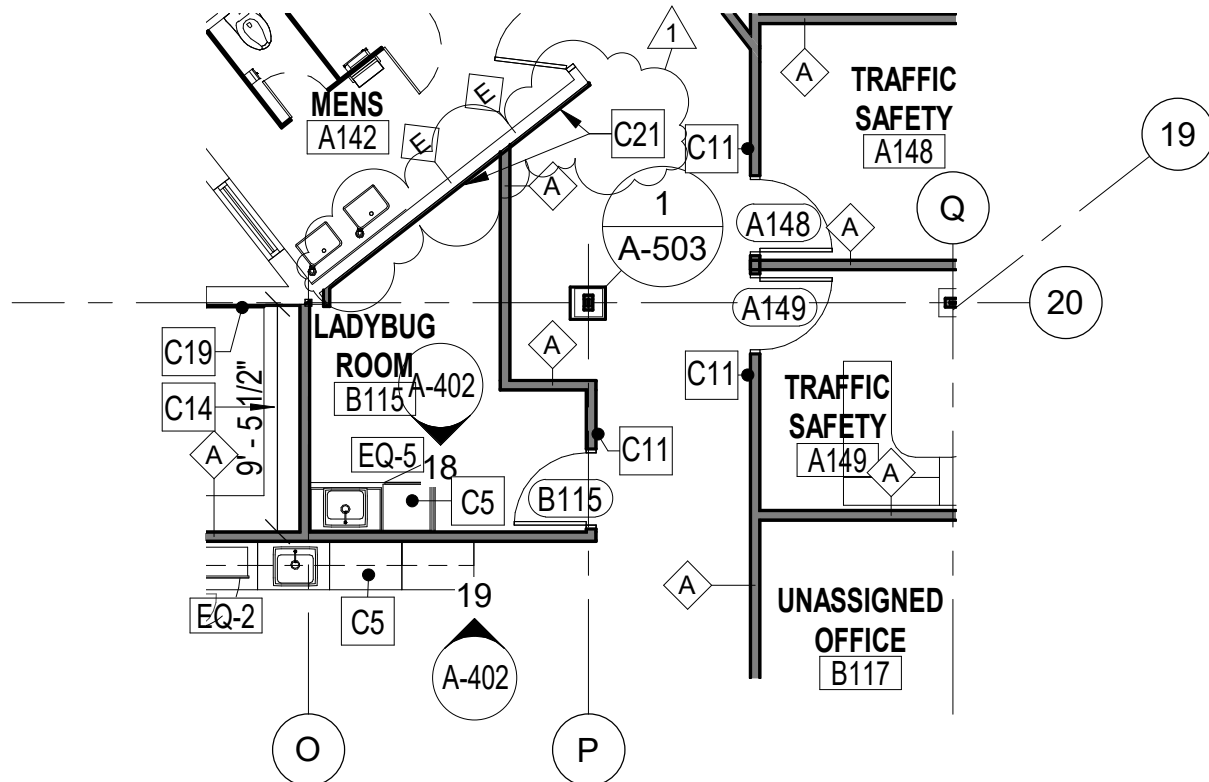
DELAWARE DEPARTMENT OF TRANSPORTATION
GEORGETOWN ADMINISTRATION BUILDING
RENOVATION / EXPANSION
23697 DUPONT BLVD, GEORGETOWN, DELAWARE 19947

This drawing is the property of STUDIOJAED and is prepared for the exclusive use of its clients at the location indicated. No other use is authorized or intended.

3 ASI-16

05/18/22
DATE
20069
PROJECT NO.

A-102
SHEET NO.
ASK-05



1 CONSTRUCTION FLOOR PLAN
 ASK-10 SCALE: 1/8" = 1'-0"

CONSTRUCTION PLANS KEYED SCOPE NOTES

KEY	NOTE
C1	FURNISH AND INSTALL NEW 4" CONCRETE SLAB OVER VAPOR BARRIER AND 4" CRUSHED STONE BASE. #4 DOWELS @ 24" O.C. INTO EXISTING SLAB TYP.
C2	FURNITURE GLASS WALL. NOT IN CONTRACT.
C3	FURNISH AND INSTALL NEW HM FRAMED/ CASED OPENING - SEE DOOR SCHEDULE FOR MORE INFORMATION
C4	FURNISH AND INSTALL NEW 2HR RATED FIRE SHUTTER AT EXISTING HM FRAME / WINDOW. SEE TYPICAL SECTION FOR MORE INFORMATION.
C5	FURNISH AND INSTALL NEW CASEWORK WITH PLAM COUNTER TOP. REFER TO CASEWORK DETAILS FOR MORE INFORMATION.
C6	FURNISH AND INSTALL NEW ADA COMPLIANT HIGH/ LOW WATER COOLER WITH BOTTLE FILLER. SEE PLUMBING PLANS FOR MORE INFORMATION.
C7	FURNISH AND INSTALL NEW SOUND ATTENUATION FABRIC WRAP PANELS - SEE ELEVATIONS FOR MORE INFORMATION
C8	FURNISH AND INSTALL POWDER COATED STEEL PEDESTAL WITH DUAL MOUNT FOR CARD READER AND DOOR OPERATOR.
C9	FURNISH AND INSTALL NEW VINYL WALL LOGO- SEE ELEVATIONS FOR MORE INFORMATION.
C10	FURNISH AND INSTALL NEW FLAT SCREEN TELEVISION WITH ASSOCIATED WALL MOUNT BY OTHERS. SEE ELEVATIONS AND ELECTRICAL PLANS FOR MORE INFORMATION
C11	FURNISH AND INSTALL NEW ADA SIGNAGE WITH BRAILLE AT CUBICLE WALS, ARCHITECTURAL WALLS, GYPSUM BOARD WALLS, AND ALUMINUM STOREFRONTS. PROVIDE BLANK REAR PLATE WHERE SIGNAGE IS INSTALLED ON GLASS - SEE TYPICAL SIGNAGE DETAILS AND DOOR SCHEDULE FOR MORE INFO
C12	REMOVE HARDWARE OF OPERABLE WINDOW TO MAKE INOPERABLE. INSTALL PRIVACY FILM ON GLASS. CLOSE OFF WINDOW WITH NEW 2 1/2" STUD AND GYPSUM WALLBOARD FROM MULLION TO MULLION.
C13	FURNISH AND INSTALL NEW MECO SHADE WINDOW TREATMENT. CONTRACTOR TO VERIFY ALL WINDOW WIDTHS IN FIELD PRIOR TO FABRICATION
C14	NEW WALL MOUNTED SHELVES. SEE CASEWORK SECTION F ON A-404.
C15	FURNISH AND INSTALL NEW ADA COMPLIANT RECESSED FIRE EXTINGUISHER CABINET.
C16	1'-0" SQUARE ALUMINUM COLUMN COVER
C17	BOTTLE COOLER BY OWNER
C18	REINSTALL EXISTING WEATHER MONITORING SYSTEM.
C19	FURNISH AND INSTALL 5/8" GYPSUM WALLBOARD OVER 3/4" METAL HAT CHANNEL, THE ENTIRE LENGTH OF WALL.
C19A	FURNISH AND INSTALL 5/8" GYPSUM WALLBOARD OVER 3 5/8" METAL HAT CHANNEL, THE ENTIRE LENGTH OF WALL.
C20	FURNISH AND INSTALL NEW MECO DUAL SHADE WINDOWS TREATMENT. CONTRACTOR TO VERIFY ALL WINDOW WIDTHS IN THE FIELD PRIOR TO FABRICATION
C21	PREPARE PAINTED MASONRY SURFACE AND LAMINATE 5/8" GYPSUM WALLBOARD OVER EXISTING CMU BLOCK WALL.

STUDIOJAED
 ARCHITECTS ■ ENGINEERS ■ FACILITIES SOLUTIONS
 Website: www.StudioJAED.com Email: info@StudioJAED.com

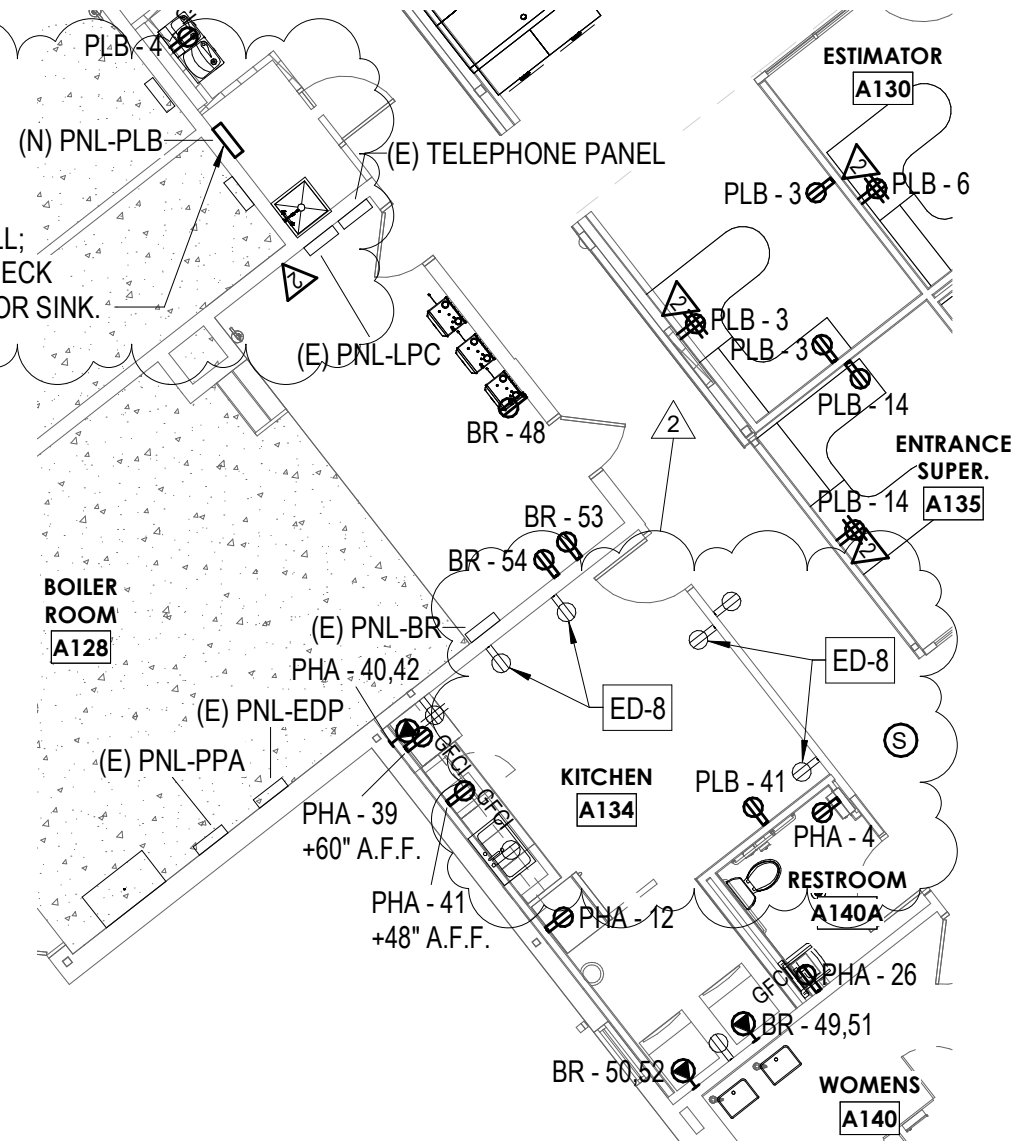
DELAWARE OFFICE: 2500 WRANGLE HILL ROAD, STE. 110 BEAR, DELAWARE 19701 P: (302) 832-1652
 PROVIDENCE OFFICE: 42 WEYBOSSET STREET, STE. 403 PROVIDENCE, RHODE ISLAND 02903 P: (401) 648-0884
 MARYLAND OFFICE: 213 FRONT STREET, P.O. BOX 254 CRUMPTON, MARYLAND 21628

DELAWARE DEPARTMENT OF TRANSPORTATION
GEORGETOWN ADMINISTRATION BUILDING
 RENOVATION / EXPANSION
 23697 DUPONT BLVD, GEORGETOWN, DELAWARE 19947

1 ASI-16
 This drawing is the property of STUDIOJAED and is prepared for the exclusive use of its clients at the location indicated. No other use is authorized or intended.

09/12/22 DATE
 20069 PROJECT NO.
 A-101 SHEET NO.
ASK-10

RELOCATE PNL-PLB TO BACK CLOSET WALL;
 MAINTAIN CLEARANCE ABOVE PANEL TO DECK
 AND MAINTAIN 30" CLEARANCE FROM FLOOR SINK.



ELECTRICAL DEMOLITION NOTES:

ED-8 REMOVE RECEPTACLES WHICH HAVE BEEN DE-ENERGIZED AS A RESULT OF OTHER RECEPTACLE DEMOLITION; PATCH, PREP AND PAINT AFFECTED WALL(S).

1 ELECTRICAL POWER PLAN
 ESK105 1/8" = 1'-0"

STUDIO JAED
 ARCHITECTS ■ ENGINEERS ■ FACILITIES SOLUTIONS
 Website: www.StudioJAED.com Email: info@StudioJAED.com

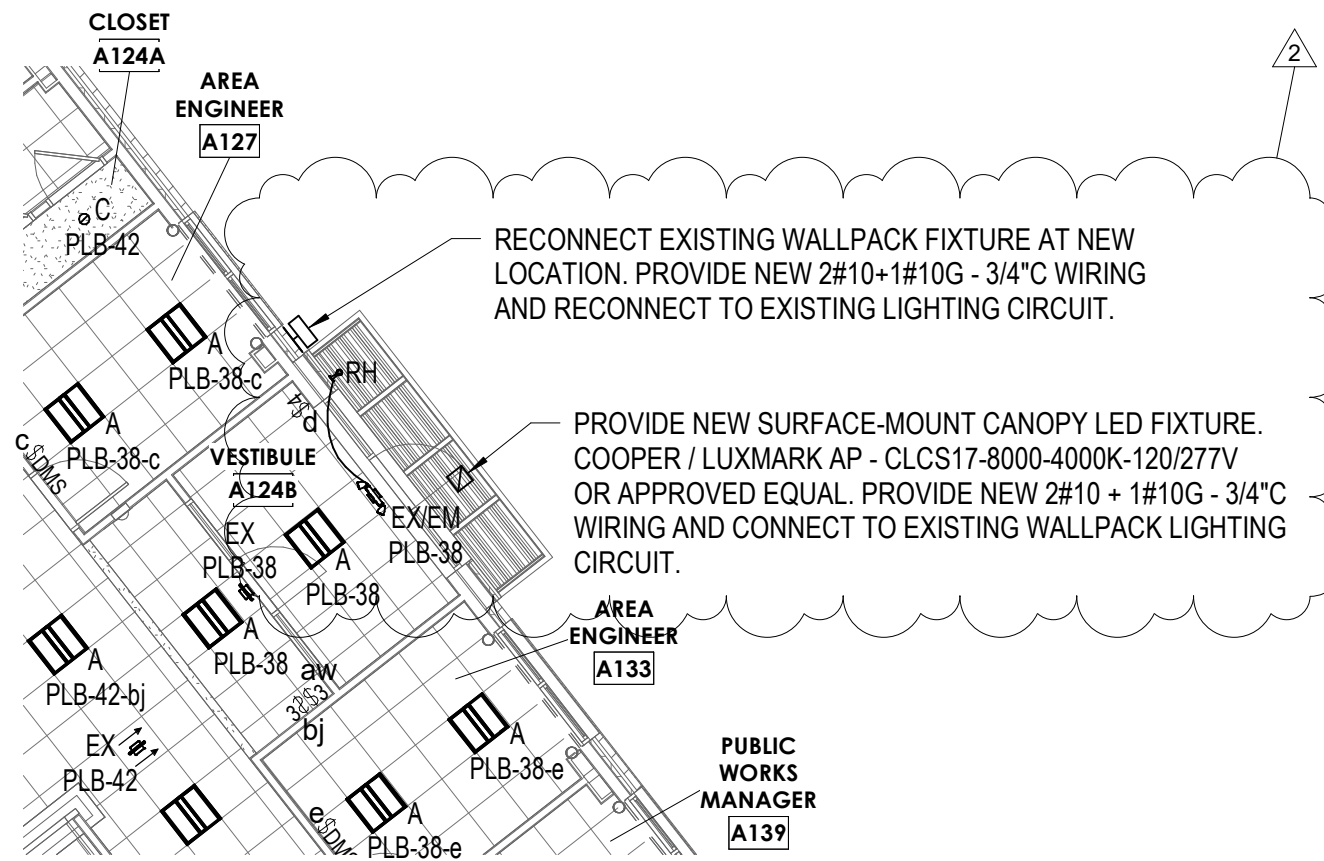
DELAWARE OFFICE: 2500 WRANGLE HILL ROAD, STE. 110 BEAR, DELAWARE 19701 P: (302) 832-1652
 PROVIDENCE OFFICE: 42 WEYBOSSET STREET, STE. 403 PROVIDENCE, RHODE ISLAND 02903 P: (401) 648-0884
 MARYLAND OFFICE: 213 FRONT STREET, P.O. BOX 254 CRUMPTON, MARYLAND 21628

DELAWARE DEPARTMENT OF TRANSPORTATION
GEORGETOWN ADMINISTRATION BUILDING
 RENOVATION / EXPANSION
 23697 DUPONT BLVD, GEORGETOWN, DELAWARE 19947

This drawing is the property of STUDIOJAED and is prepared for the exclusive use of its clients at the location indicated. No other use is authorized or intended.

ASI #16

09/12/22
 DATE SHEET NO.
 20069
 PROJECT NO. **ESK105**



1 **ELECTRICAL LIGHTING PLAN**
 ESK106 1/8" = 1'-0"

STUDIO JAED
 ARCHITECTS ■ ENGINEERS ■ FACILITIES SOLUTIONS
 Website: www.StudioJAED.com Email: info@StudioJAED.com

DELAWARE OFFICE: 2500 WRANGLE HILL ROAD, STE. 110 BEAR, DELAWARE 19701 P: (302) 832-1652
 PROVIDENCE OFFICE: 42 WEYBOSSET STREET, STE. 403 PROVIDENCE, RHODE ISLAND 02903 P: (401) 648-0884
 MARYLAND OFFICE: 213 FRONT STREET, P.O. BOX 254 CRUMPTON, MARYLAND 21628

DELAWARE DEPARTMENT OF TRANSPORTATION
GEORGETOWN ADMINISTRATION BUILDING
 RENOVATION / EXPANSION
 23697 DUPONT BLVD, GEORGETOWN, DELAWARE 19947

This drawing is the property of STUDIOJAED and is prepared for the exclusive use of its clients at the location indicated. No other use is authorized or intended.

△ ASI #16

09/13/22
 DATE SHEET NO.
 20069
 PROJECT NO. **ESK106**

Branch Panel: PLB

Location: JAN A122
 Supply From: (E) SWBD - MAIN ELECTRICAL PANEL
 Mounting: Surface
 Enclosure: NEMA 1


Volts: 120/208 Wye
 Phases: 3
 Wires: 4

A.I.C. Rating: 14,000
 Mains Type: MLO
 Mains Rating: 225 A
 MCB Rating:

Notes:

CKT	Circuit Description	Trip	Poles	Wire Size & Conduit	A		B		C		Wire Size & Conduit	Poles	Trip	Circuit Description	CKT
					kVA	kVA	kVA	kVA	kVA	kVA					
1	Recepts. - A113 MENS AUTO FAUCETS	20 A	1	2#12 + 1#12G - 3/4"C	0.36 kVA	0.36 kVA					2#12 + 1#12G - 3/4"C	1	20 A	Recepts. - A114 WOMENS AUTO FAUCETS	2
3	Recepts. - A124A ADMIN	20 A	1	2#12 + 1#12G - 3/4"C			0.72 kVA	0.36 kVA			2#12 + 1#12G - 3/4"C	1	20 A	Recepts. - A123/A115A CORRIDOR/LAUNDRY	4
5	Recepts. - A124C ESTIMATOR	20 A	1	2#12 + 1#12G - 3/4"C					0.72 kVA	0.72 kVA	2#12 + 1#12G - 3/4"C	1	20 A	Recepts. - A124B ESTIMATOR	6
7	Recepts. - A125 CONFERENCE	20 A	1	2#12 + 1#12G - 3/4"C	0.54 kVA	0.72 kVA					2#12 + 1#12G - 3/4"C	1	20 A	Recepts. - A124D AREA MANAGER	8
9	Recepts. - A127 AREA ENGI	20 A	1	2#12 + 1#12G - 3/4"C			0.72 kVA	0.90 kVA			2#10 + 1#10G - 3/4"C	1	20 A	Recepts. - A126 GROUP ENGI	10
11	Recepts. - A131 PUBLIC WORKS PLAN REV	20 A	1	2#10 + 1#10G - 3/4"C					0.72 kVA	0.72 kVA	2#10 + 1#10G - 3/4"C	1	20 A	Recepts. - A130 AREA ENGI	12
13	Recepts. - A136 SUBDIV SUPER	20 A	1	2#12 + 1#12G - 3/4"C	0.72 kVA	0.72 kVA					2#12 + 1#12G - 3/4"C	1	20 A	Recepts. - A135 ENTRANCE SUPER	14
15	Recepts. - A138 PLAN REV	20 A	1	2#12 + 1#12G - 3/4"C			0.72 kVA	0.72 kVA			2#12 + 1#12G - 3/4"C	1	20 A	Recepts. - A137 UTILITIES SUPER	16
17	Recept. - A143 OPEN OFFICE	20 A	1	2#12 + 1#12G - 3/4"C					0.18 kVA	0.72 kVA	2#12 + 1#12G - 3/4"C	1	20 A	Recept. - A143 OPEN OFFICE SCANNER	18
19	Recepts. - A144 TV	20 A	1	2#10 + 1#10G - 3/4"C	0.72 kVA	0.72 kVA					2#10 + 1#10G - 3/4"C	1	20 A	Recepts. - A144 CONFERENCE	20
21	Recepts. - A146 R/E	20 A	1	2#10 + 1#10G - 3/4"C			0.72 kVA	0.72 kVA			2#10 + 1#10G - 3/4"C	1	20 A	Recepts. - A145 PUBLIC WORKS ENGI	22
23	Recept. - B112 REFRIGERATOR BREAK	20 A	1	2#10 + 1#10G - 3/4"C					0.18 kVA	0.72 kVA	2#10 + 1#10G - 3/4"C	1	20 A	Recepts. - A147 R/E	24
25	Recept. - CORRIDOR PRINTER	20 A	1	2#12 + 1#12G - 3/4"C	0.18 kVA	0.18 kVA					2#12 + 1#12G - 3/4"C	1	20 A	Recept. - CORRIDOR PRINTER NORTH	26
27	JB - A124 OPEN OFFICE - MID	20 A	1	2#12 + 1#12G - 3/4"C			0.54 kVA	0.18 kVA			2#12 + 1#12G - 3/4"C	1	20 A	Recept. - CORRIDOR COPIER NORTH	28
29	JB - A124 OPEN OFFICE - EAST	20 A	1	2#12 + 1#12G - 3/4"C					0.54 kVA	0.54 kVA	2#12 + 1#12G - 3/4"C	1	20 A	JB - A124 OPEN OFFICE - MID	30
31	JB - A132 OPEN OFFICE - EAST	20 A	1	2#12 + 1#12G - 3/4"C	0.54 kVA	0.54 kVA					2#12 + 1#12G - 3/4"C	1	20 A	JB - A124 OPEN OFFICE - WEST	32
33	JB - A141 OPEN OFFICE - MID	20 A	1	2#12 + 1#12G - 3/4"C			0.54 kVA	0.54 kVA			2#12 + 1#12G - 3/4"C	1	20 A	JB - A141 OPEN OFFICE - EAST	34
35	JB - A141 OPEN OFFICE - WEST	20 A	1	2#12 + 1#12G - 3/4"C					0.54 kVA	0.54 kVA	2#12 + 1#12G - 3/4"C	1	20 A	JB - A141 OPEN OFFICE - MID	36
37	Recept. - A115A WASHER/DRYER	20 A	1	2#12 + 1#12G - 3/4"C	0.18 kVA	1.40 kVA					2#10 + 1#10G - 3/4"C	1	20 A	Lights - NE	38
39	Recept. - A115A WASHER/DRYER	20 A	1	2#12 + 1#12G - 3/4"C			0.18 kVA	1.19 kVA			2#10 + 1#10G - 3/4"C	1	20 A	Lights - WEST	40
41	Recept. - A134 KITCHEN	20 A	1	2#12 + 1#12G - 3/4"C					0.18 kVA	1.39 kVA	2#10 + 1#10G - 3/4"C	1	20 A	Lights - OPEN OFFICES	42
Total Load:					7.88 kVA		8.75 kVA		8.41 kVA						
Total Amps:							66 A								

Notes: PROVIDE NEW CIRCUIT BREAKERS AS REQUIRED. ALL INDICATED WIRE AND CONDUIT SIZES ARE NEW.



ARCHITECTS ■ ENGINEERS ■ FACILITIES SOLUTIONS
 Website: www.StudioJAED.com Email: info@StudioJAED.com

DELAWARE OFFICE: 2500 WRANGLE HILL ROAD, STE. 110 BEAR, DELAWARE 19701 P: (302) 832-1652
 PROVIDENCE OFFICE: 42 WEYBOSSET STREET, STE. 403 PROVIDENCE, RHODE ISLAND 02903 P: (401) 648-0884
 MARYLAND OFFICE: 213 FRONT STREET, P.O. BOX 254 CRUMPTON, MARYLAND 21628

DELAWARE DEPARTMENT OF TRANSPORTATION
GEORGETOWN ADMINISTRATION BUILDING
 RENOVATION / EXPANSION
 23697 DUPONT BLVD, GEORGETOWN, DELAWARE 19947

This drawing is the property of STUDIOJAED and is prepared for the exclusive use of its clients at the location indicated. No other use is authorized or intended.

ASI #16

09/12/22

DATE

SHEET NO.

20069

PROJECT NO.

ESK107