

**ASI-20**

Date: October 27, 2022

Project: DelDOT Georgetown Administration Building

Project No: T202180102

SJ Project No: 20069

---

The work herein shall be considered part of the bid documents for the referenced project and carried out in accordance with the following supplemental instructions issued in accordance with the Contract Documents without change in Contract Sum or Contract Time. Acknowledge receipt of addendum on the bid form as indicated.

---

Additional Clarifications:

1. At the exterior concrete ramp with the hairline crack, fill crack with structural injection epoxy. Basis of Design: Simpson Strong-Tie CI-LV Low-Viscosity Injection Epoxy.
2. At gang-bathrooms, patch holes/walls around plumbing lines and where block cracks occur with mortar. At removed recessed toilet accessories, infill wall with CMU block.

Changes to Drawings

1. A-101 – Construction Floor Plan
  - a. Remove and install new of existing gypsum wall board at adjusted data and outlet locations noted on ASK-14.
2. E-101 – Electrical Power Plans
  - a. Removed power and data from window wall in conference room A144.
3. E-301 – Electrical Fire Alarm Plan
  - a. Adjusted location of horn strobe to opposite wall in corridor B124.

See Revised Drawings:

1. E-101
2. E-301
3. ASK-14



NOTE: DEMOLISH AND INSTALL NEW GYPSUM BOARD FOR RELOCATING DATA AND POWER, TO EXTENT DIMENSIONED ABOVE.

1 PARTIAL CONSTRUCTION FLOOR PLAN  
 ASK-14 SCALE: 1" = 10'-0"

**STUDIO JAED**  
 ARCHITECTS ■ ENGINEERS ■ FACILITIES SOLUTIONS  
 Website: www.StudioJAED.com Email: info@StudioJAED.com

**DELAWARE OFFICE**  
 2500 WRANGLE HILL ROAD, STE. 110  
 BEAR, DELAWARE 19701  
 P: (302) 832-1652

**PROVIDENCE OFFICE**  
 42 WEYBOSSET STREET, STE. 403  
 PROVIDENCE, RHODE ISLAND 02903  
 P: (401) 648-0884

**MARYLAND OFFICE**  
 213 FRONT STREET, P.O. BOX 254  
 CRUMPTON, MARYLAND 21628

DELAWARE DEPARTMENT OF TRANSPORTATION  
**GEORGETOWN ADMINISTRATION BUILDING**  
 RENOVATION / EXPANSION  
 23697 DUPONT BLVD, GEORGETOWN, DELAWARE 19947

This drawing is the property of STUDIOJAED and is prepared for the exclusive use of its clients at the location indicated. No other use is authorized or intended.

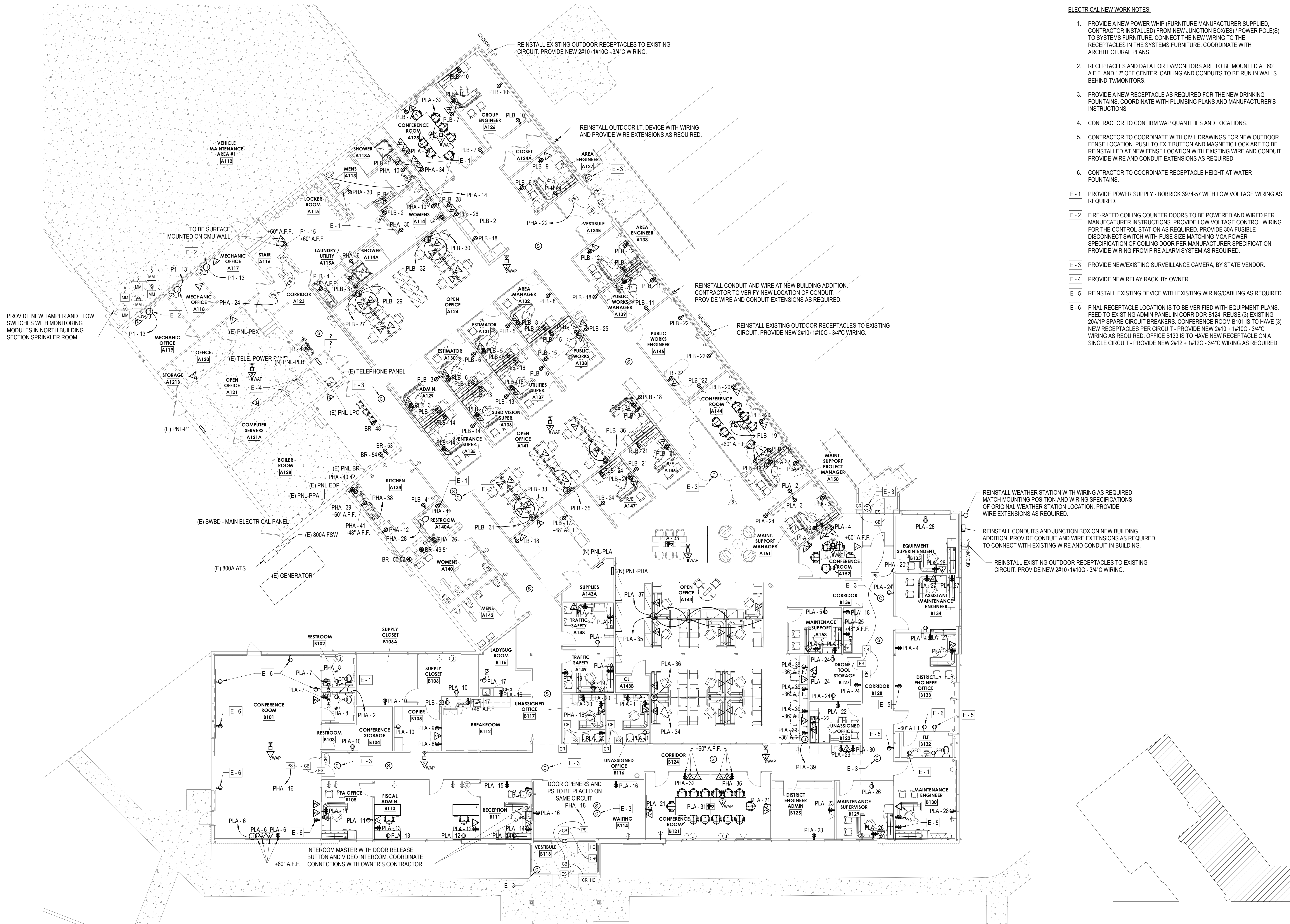


10/25/22  
 DATE  
 20069  
 PROJECT NO.

SHEET NO.  
**ASK-14**



THE RECIPIENT OF THESE PLANS BY ANY MEANS (PHOTOCOPYING, ELECTRONIC TRANSMISSION, OR OTHERWISE) IS HEREBY ADVISED THAT THE INFORMATION CONTAINED HEREIN IS UNCLASSIFIED AND IS NOT TO BE REPRODUCED OR TRANSMITTED IN ANY FORM OR BY ANY MEANS, ELECTRONIC OR MECHANICAL, INCLUDING PHOTOCOPYING, RECORDING, OR BY ANY INFORMATION STORAGE AND RETRIEVAL SYSTEM, WITHOUT THE EXPRESS WRITTEN PERMISSION OF STUDIOJAED ARCHITECTS & ENGINEERS. THE RECIPIENT OF THESE PLANS IS ADVISED THAT THE INFORMATION CONTAINED HEREIN IS UNCLASSIFIED AND IS NOT TO BE REPRODUCED OR TRANSMITTED IN ANY FORM OR BY ANY MEANS, ELECTRONIC OR MECHANICAL, INCLUDING PHOTOCOPYING, RECORDING, OR BY ANY INFORMATION STORAGE AND RETRIEVAL SYSTEM, WITHOUT THE EXPRESS WRITTEN PERMISSION OF STUDIOJAED ARCHITECTS & ENGINEERS.



**ELECTRICAL NEW WORK NOTES:**

1. PROVIDE A NEW POWER WHIP (FURNITURE MANUFACTURER SUPPLIED, CONTRACTOR INSTALLED) FROM NEW JUNCTION BOX(ES) (POWER POLE(S)) TO SYSTEMS FURNITURE. CONNECT THE NEW WIRING TO THE RECEPTACLES IN THE SYSTEMS FURNITURE. COORDINATE WITH ARCHITECTURAL PLANS.
  2. RECEPTACLES AND DATA FOR TV/MONITORS ARE TO BE MOUNTED AT 60" A.F.F. AND 12" OFF CENTER. CABLING AND CONDUITS TO BE RUN IN WALLS BEHIND TV/MONITORS.
  3. PROVIDE A NEW RECEPTACLE AS REQUIRED FOR THE NEW DRINKING FOUNTAINS. COORDINATE WITH PLUMBING PLANS AND MANUFACTURER'S INSTRUCTIONS.
  4. CONTRACTOR TO CONFIRM WAP QUANTITIES AND LOCATIONS.
  5. CONTRACTOR TO COORDINATE WITH CIVIL DRAWINGS FOR NEW OUTDOOR FENSE LOCATION. PUSH TO EXIT BUTTON AND MAGNETIC LOCK ARE TO BE REINSTALLED AT NEW FENSE LOCATION WITH EXISTING WIRE AND CONDUIT. PROVIDE WIRE AND CONDUIT EXTENSIONS AS REQUIRED.
  6. CONTRACTOR TO COORDINATE RECEPTACLE HEIGHT AT WATER FOUNTAINS.
- E-1 PROVIDE POWER SUPPLY - BOBRICK 3974-57 WITH LOW VOLTAGE WIRING AS REQUIRED.
- E-2 FIRE-RATED COILING COUNTER DOORS TO BE POWERED AND WIRED PER MANUFACTURER INSTRUCTIONS. PROVIDE LOW VOLTAGE CONTROL WIRING FOR THE CONTROL STATION AS REQUIRED. PROVIDE 30A FUSIBLE DISCONNECT SWITCH WITH FUSE SIZE MATCHING MCA POWER SPECIFICATION OF COILING DOOR PER MANUFACTURER SPECIFICATION. PROVIDE WIRING FROM FIRE ALARM SYSTEM AS REQUIRED.
- E-3 PROVIDE NEW/EXISTING SURVEILLANCE CAMERA, BY STATE VENDOR.
- E-4 PROVIDE NEW RELAY RACK, BY OWNER.
- E-5 REINSTALL EXISTING DEVICE WITH EXISTING WIRING/CABLING AS REQUIRED.
- E-6 FINAL RECEPTACLE LOCATION IS TO BE VERIFIED WITH EQUIPMENT PLANS. FEED TO EXISTING ADMIN PANEL IN CORRIDOR B124. REUSE (3) EXISTING 20A/1P SPARE CIRCUIT BREAKERS. CONFERENCE ROOM B101 IS TO HAVE (3) NEW RECEPTACLES PER CIRCUIT - PROVIDE NEW 2#10 - 3/4" C WIRING AS REQUIRED. OFFICE B133 IS TO HAVE NEW RECEPTACLE ON A SINGLE CIRCUIT - PROVIDE NEW 2#12 + 1#12G - 3/4" C WIRING AS REQUIRED.

**STUDIOJAED**  
 ARCHITECTS & ENGINEERS ■ FACILITIES SOLUTIONS  
 Website: www.studiojaed.com  
 Email: info@studiojaed.com  
 MARYLAND OFFICE  
 273 FRONT STREET, STE. 403  
 CRUMPTON, MARYLAND 21030  
 P: 410-528-5800  
 DELAWARE OFFICE  
 2800 WINDHILL ROAD, STE. 110  
 BEAR DELAWARE 19701  
 P: 302-438-5800

CONSULTANT

ARCHITECT / ENGINEER SEAL

THIS DRAWING IS THE PROPERTY OF STUDIOJAED ARCHITECTS & ENGINEERS AND IS PREPARED FOR THE EXCLUSIVE USE OF ITS CLIENTS AT THE LOCATION INDICATED. NO OTHER USE IS AUTHORIZED OR INTENDED.

DELAWARE DEPARTMENT OF TRANSPORTATION  
 GEORGETOWN ADMINISTRATION BUILDING  
 RENOVATION/EXPANSION  
 2887 DUPONT BLVD, GEORGETOWN, DELAWARE 19847

**REVISIONS**

Rev	Date	Description
1	11/08/2021	Addendum #5
2	4/07/2022	ASI #5
3	5/25/2022	ASI #6
4	7/20/2022	ASI #11
5	9/06/2022	ASI #15 REV #1
6	9/13/2022	ASI #16
7	9/21/2022	ASI #17
8	10/7/2022	ASI #19
9	10/27/2022	ASI #20

SHEET TITLE

**ELECTRICAL POWER PLANS**

ISSUED FOR CONSTRUCTION  
 JANUARY 26, 2022

DRAWN	CHK'D	PROJECT NO.
DZ	PP	20069

SHEET NO.

**E-101**

1 ELECTRICAL FLOOR POWER PLANS  
 E-101 1/8" = 1'-0"

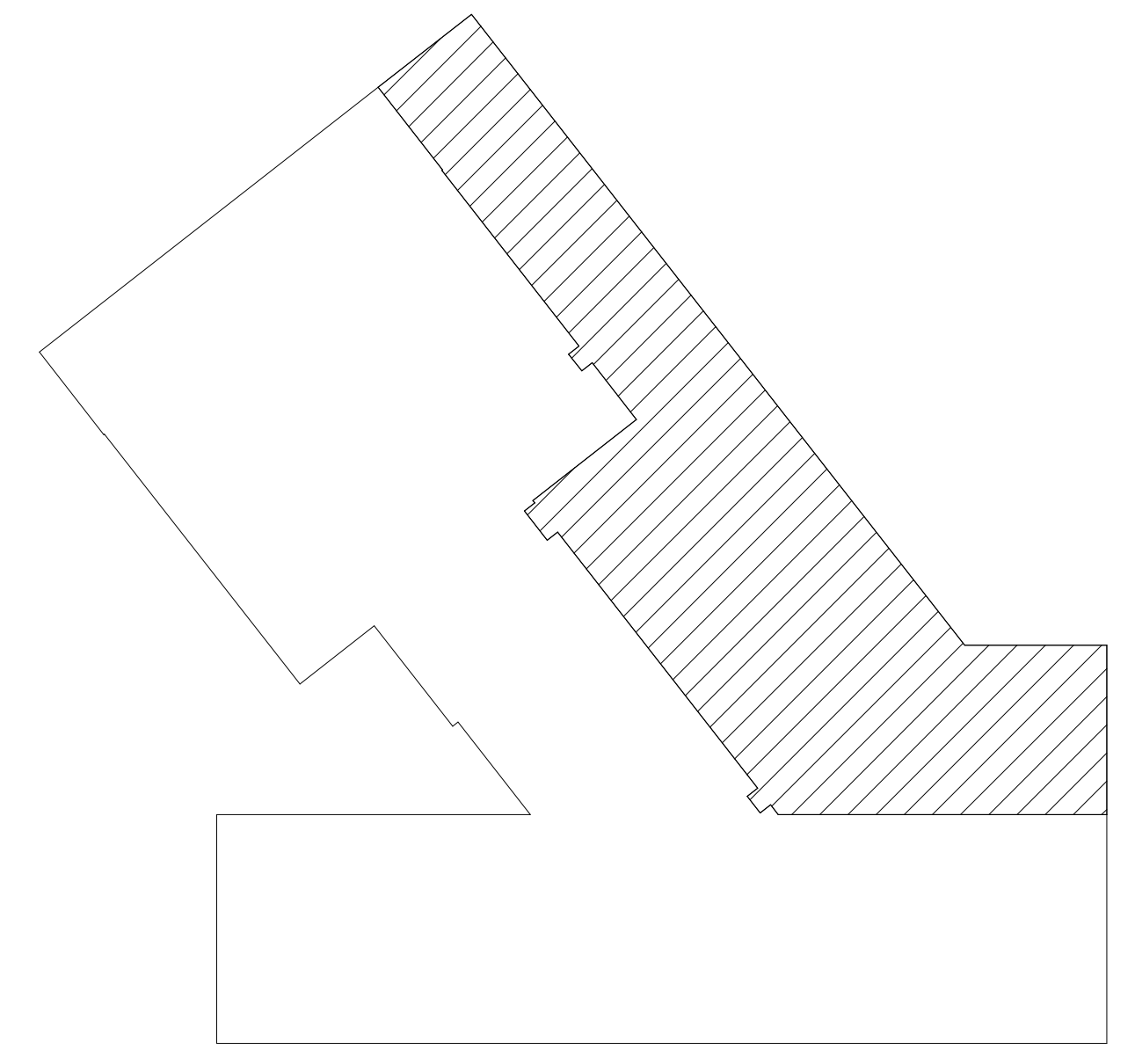
KEY PLAN  
 1/32" = 1'-0"



THE RECEIVER OF THESE PLANS BY PROCEEDING WITH CONSTRUCTION, TRANSMISSION OR USE THEREOF, AGREES TO HOLD THE ARCHITECT HARMLESS FROM AND IN DEFENSE OF ALL REASONABLE CLAIMS AND DAMAGES THAT MAY BE ASSERTED AGAINST THE ARCHITECT BY ANY PARTY, INCLUDING THE CLIENT, ARISING FROM THE USE OF THESE PLANS. THE ARCHITECT'S LIABILITY IS LIMITED TO THE ARCHITECT'S NEGLIGENCE IN THE PERFORMANCE OF PROFESSIONAL SERVICES. THE ARCHITECT'S LIABILITY IS LIMITED TO THE ARCHITECT'S NEGLIGENCE IN THE PERFORMANCE OF PROFESSIONAL SERVICES. THE ARCHITECT'S LIABILITY IS LIMITED TO THE ARCHITECT'S NEGLIGENCE IN THE PERFORMANCE OF PROFESSIONAL SERVICES.



1 ELECTRICAL FLOOR FIRE ALARM PLANS  
 E-301 1/8" = 1'-0"



KEY PLAN  
 1/32" = 1'-0"

**FIRE ALARM NEW WORK NOTES:**

1. PROVIDE NEW FA DEVICES (DARK OUTLINE) WITH WIRING AS REQUIRED.
- EF-1 REINSTALL EXISTING FIRE ALARM DEVICE WITH EXISTING WIRING AS REQUIRED.

**STUDIOJAED**  
 ARCHITECTS ■ ENGINEERS ■ FACILITIES SOLUTIONS  
 Website: www.studiojaed.com Email: info@studiojaed.com  
 DELAWARE OFFICE 200 W. BASSSETT STREET, 403 BEAR CREEK DRIVE, GEORGETOWN, DE 19609  
 MARYLAND OFFICE 273 FRONT STREET, P.O. BOX 254 CRUMFORD, MARYLAND 21030  
 PROVIDENCE OFFICE 42 WET BASSETT STREET, STE. 403 PROVIDENCE, RHODE ISLAND 02903  
 P: 302.456.9361

CONSULTANT

THIS DRAWING IS THE PROPERTY OF STUDIOJAED AND IS PREPARED FOR THE EXCLUSIVE USE OF ITS CLIENTS AT THE LOCATION INDICATED. NO OTHER USE IS AUTHORIZED OR INTENDED.

ARCHITECT / ENGINEER SEAL

PROJECT  
 DELAWARE DEPARTMENT OF TRANSPORTATION  
 GEORGETOWN ADMINISTRATION BUILDING  
 RENOVATION / EXPANSION  
 23657 DUPONT BLVD, GEORGETOWN, DELAWARE 19947

REVISIONS

Rev.	Date	ASI #	Description
1	4/07/2022	ASI #5	
2	5/25/2022	ASI #8	
3	10/27/2022	ASI #20	

SHEET TITLE

**ELECTRICAL FIRE ALARM PLAN**

ISSUED FOR CONSTRUCTION  
 JANUARY 26, 2022

DRAWN	CHK'D	PROJECT NO.
DZ	PP	20069

SHEET NO.

**E-301**