



1621 N. Lincoln Street
 Wilmington, DE 19806
 (P) 302.658.6426
 (F) 302.658.8431
 abhagen@ABHA.com
 www.ABHA.com

CONSULTANTS
 Davis Bowen & Friedel, Inc.
 Civil Engineer
 1 Park Avenue
 Milford, DE 19966

Pilottown Engineering
 Structural Engineer
 17285 Nassau Commons Blvd. Unit 3
 Lewes, DE 19958

Activitas, Inc.
 Landscape Architect
 70 Milton Street
 Dedham, MA 02026

GIPE Associates
 MEP Engineer
 8719 Brooks Drive
 Exton, MD 21601

Stages
 Theater & Acoustic Consultant
 732-333-8003

Corsi Associates
 Food Service Consultant
 1489 Baltimore Pike
 Springfield, PA 19064

CONSTRUCTION DOCUMENTS

PROJECT
 NEW MIDDLE SCHOOL
 910 SHIELDS AVENUE
 LEWES, DE 19958

OWNER
 CAPE HENLOPEN
 SCHOOL DISTRICT
 1270 KINGS HWY
 LEWES, DE 19585

KEYPLAN

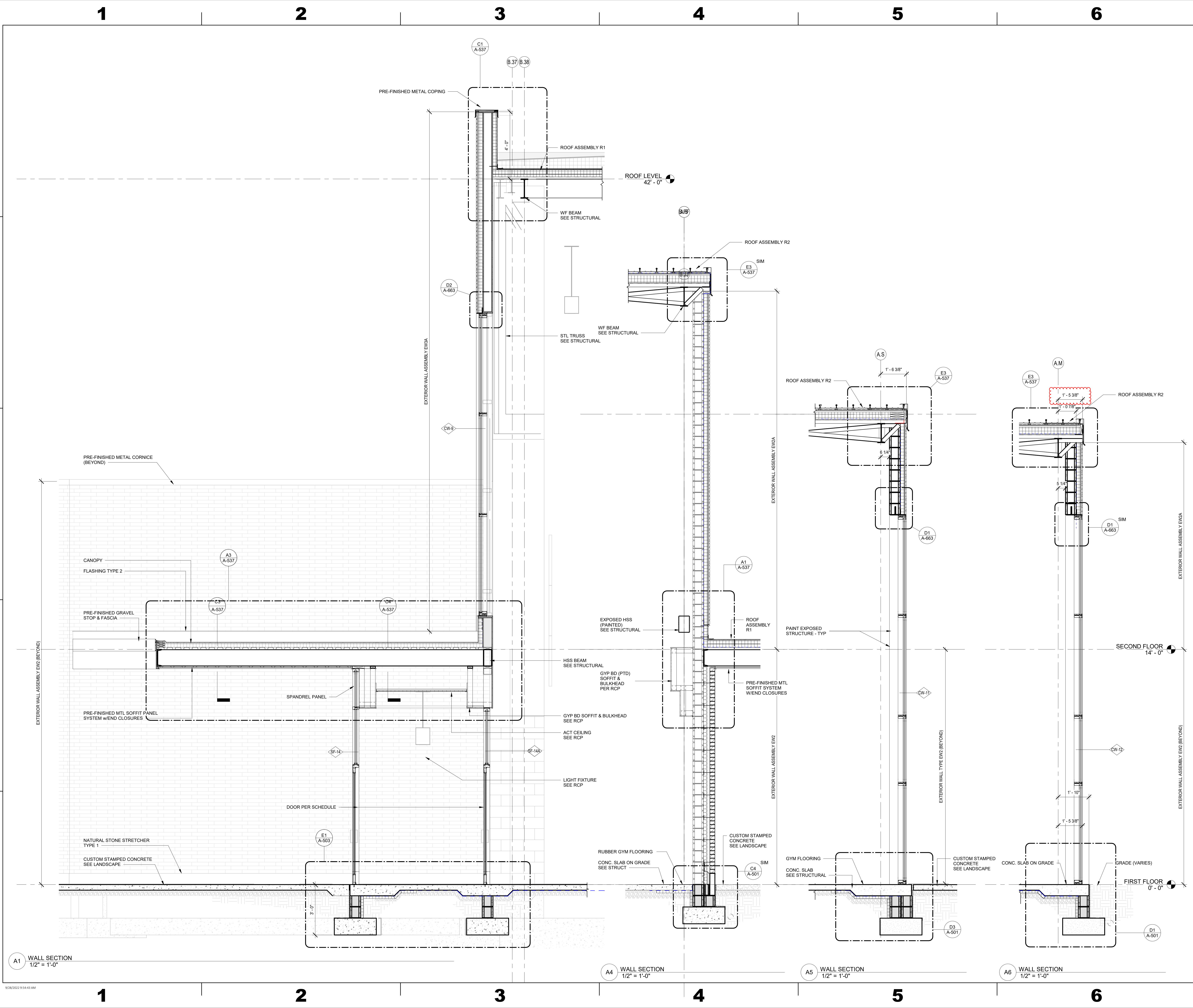
MARK	DATE	DESCRIPTION
3	05/17/2022	CONFORMANCE SET
2	03/18/2022	ISSUED FOR BID
1	02/04/2022	DFM FINAL REVIEW

PROJECT NUMBER: 2020-14
 FILE NAME: CHMS_Arch_v2020.rvt
 DRAWN BY: LR
 CHECKED BY: BTW

The professional services of ABHA Architects, Inc. are undertaken for and performed in the interest of Cape Henlopen School District. No contractual obligation is assumed by ABHA Architects, Inc. for the benefit of any other person involved in the project.
 These documents are owned by ABHA Architects, Inc. and shall not be used without written permission. Copyright ABHA Architects, Inc. © 2021

SHEET TITLE
 WALL SECTIONS

A-357



A1 WALL SECTION
 1/2" = 1'-0"

A4 WALL SECTION
 1/2" = 1'-0"

A5 WALL SECTION
 1/2" = 1'-0"

A6 WALL SECTION
 1/2" = 1'-0"

1 2 3 4 5 6

9/28/2022 9:54:43 AM