

## ARCHITECTS SUPPLEMENTARY INSTRUCTIONS

Project: Cape Henlopen Middle School	Project No.: 2020-14	Request Date: 11/14/2022	ASI NO: 013
Architects: ABHA Architects, Inc. 1621 N. Lincoln Street, Wilmington, DE	Reason for Request: Revision to AWP Finishes		
To: Dean Johnson Richard Y. Johnson & Son 18404 Johnson Road, P.O. Box 105 Lincoln, DE 19960			
Description: Finish color selections and revisions to AWP finishes.			
Attachments: A-413 Interior Elevations and Casework (Commons & Classrooms); I-001 Finish Legend & General Notes; I-002 Finish Schedule			
Issued by: Bryan Williams	Title: Project Architect		
<ol style="list-style-type: none"><li>1. Drawing A-413 Title:<ol style="list-style-type: none"><li>a. Revised A1, A2, &amp; A4/A-413 elevations to match schedule.</li></ol></li><li>2. Drawing I-001<ol style="list-style-type: none"><li>a. Revised color and descriptions for acoustical wall panels</li></ol></li><li>3. Drawing I-002<ol style="list-style-type: none"><li>a. Revised wall finishes for rooms Band B144 and Chorus B146</li></ol></li></ol> <p>Provide credit</p>			

1

2

3

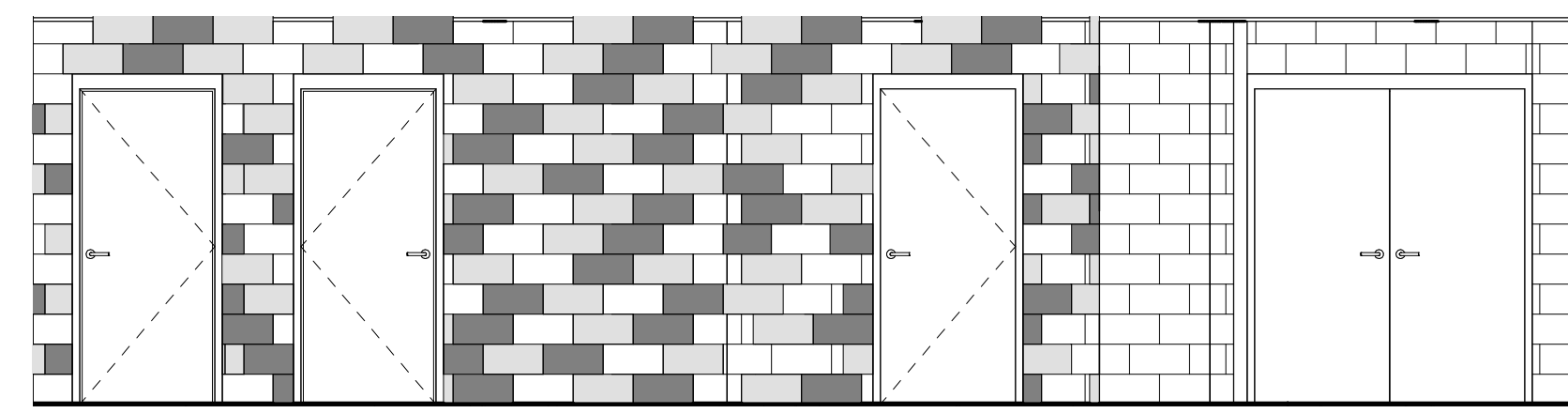
4

5

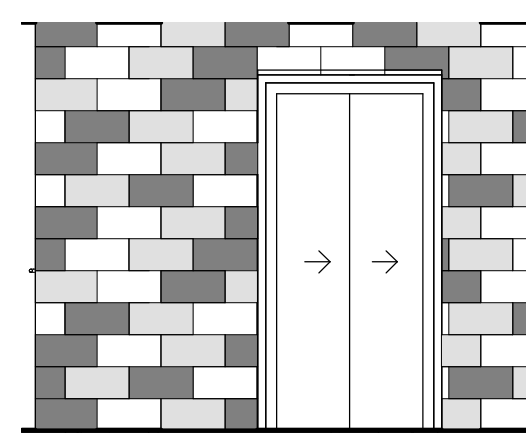
6

**LEGEND**

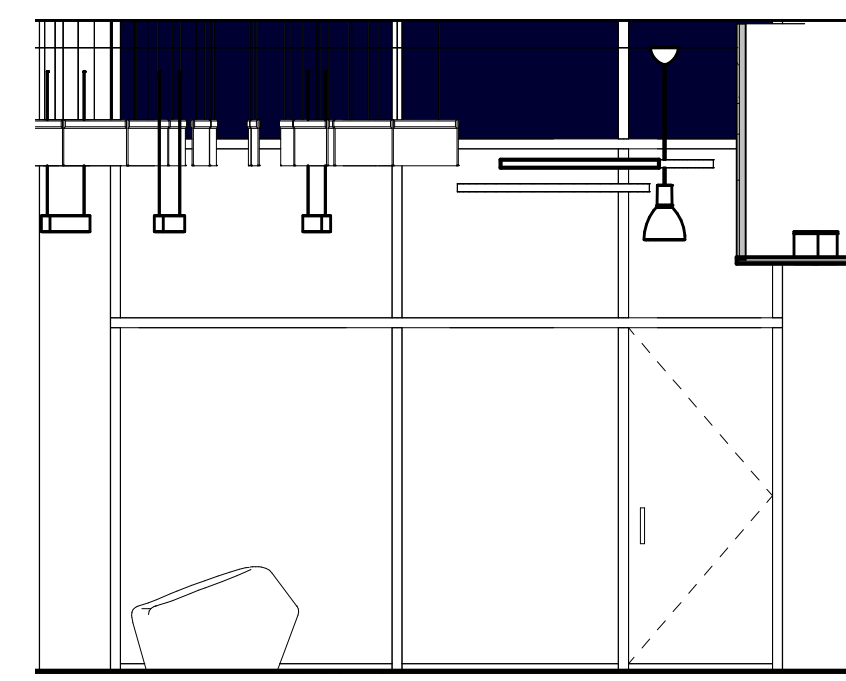
	ACRYLIC FACED CMU 1 - COLOR TBD
	ACRYLIC FACED CMU 2 - COLOR TBD
	ACRYLIC FACED CMU 3 - COLOR TBD



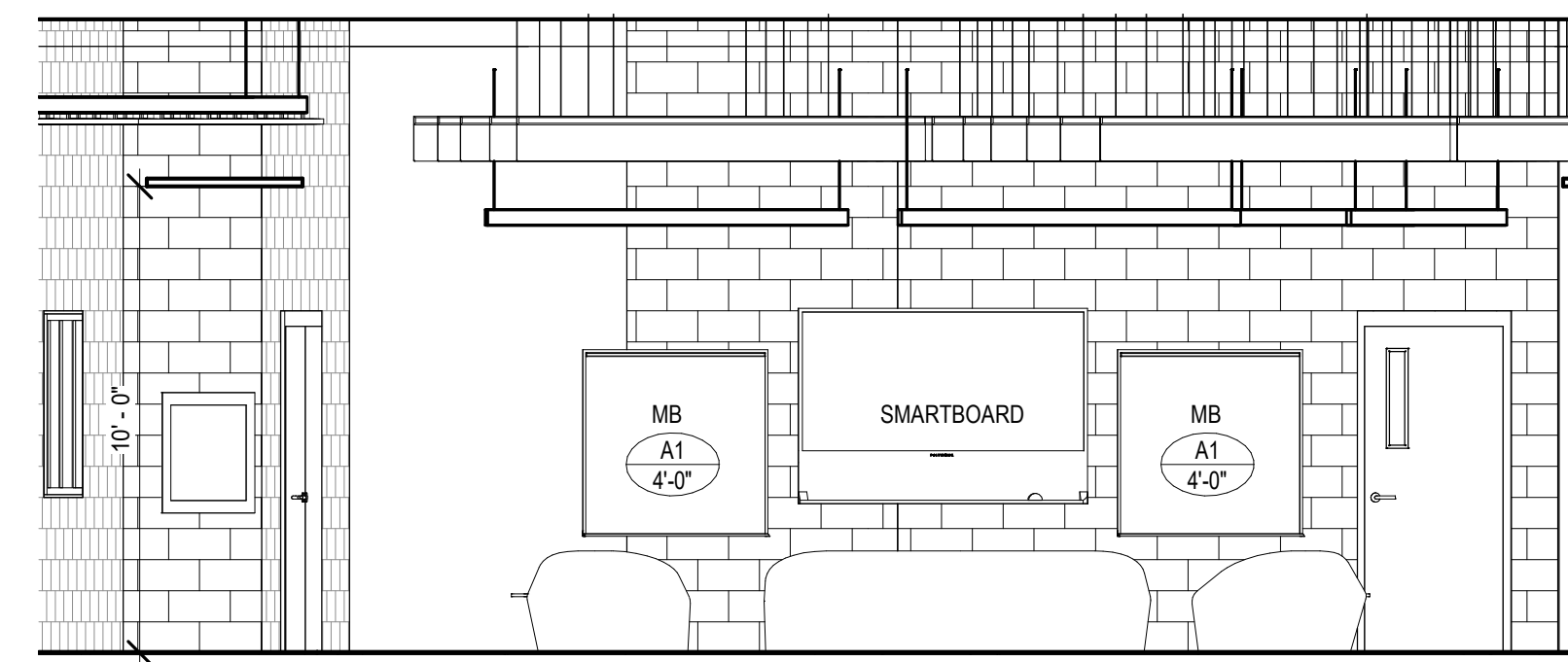
E1 ELEVATION - COMMONS  
1/4" = 1'-0"



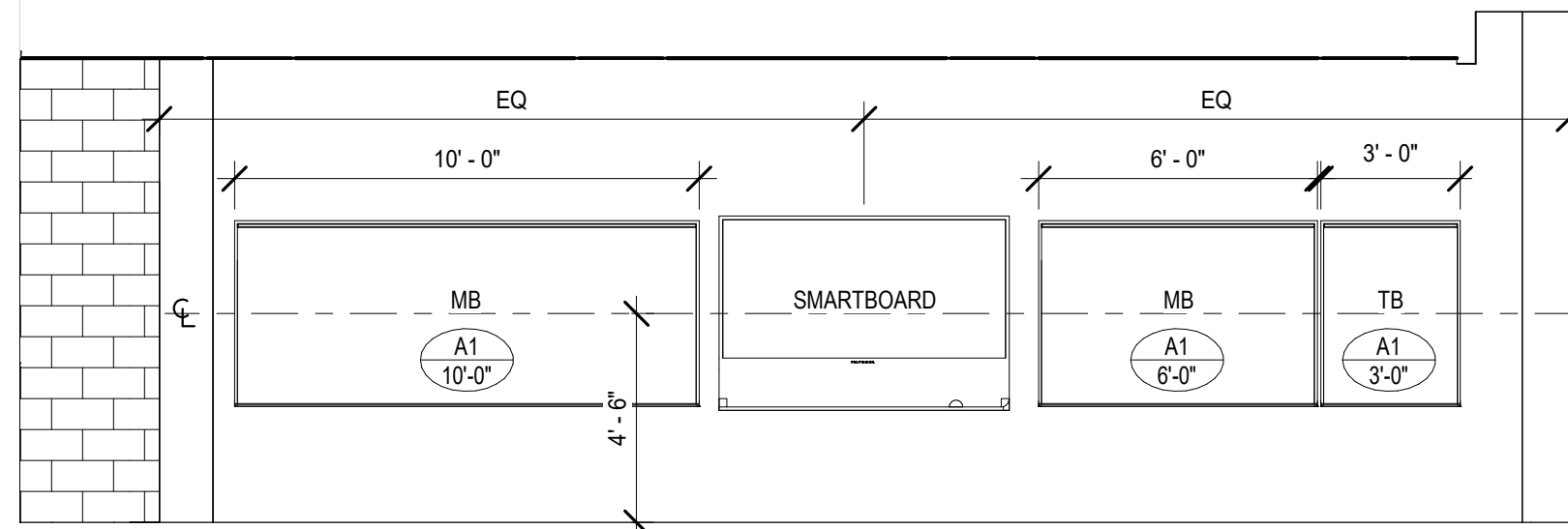
E3 ELEVATION - COMMONS  
1/4" = 1'-0"



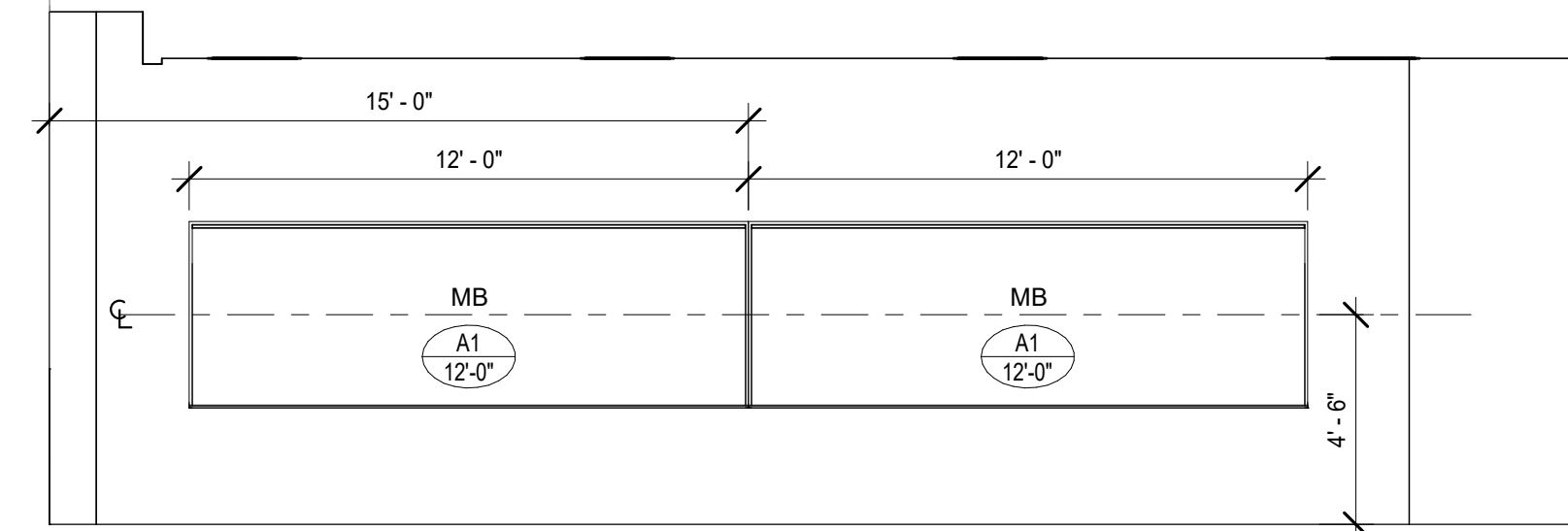
E4 ELEVATION - COMMONS  
1/4" = 1'-0"



E5 ELEVATION - COMMONS  
1/4" = 1'-0"



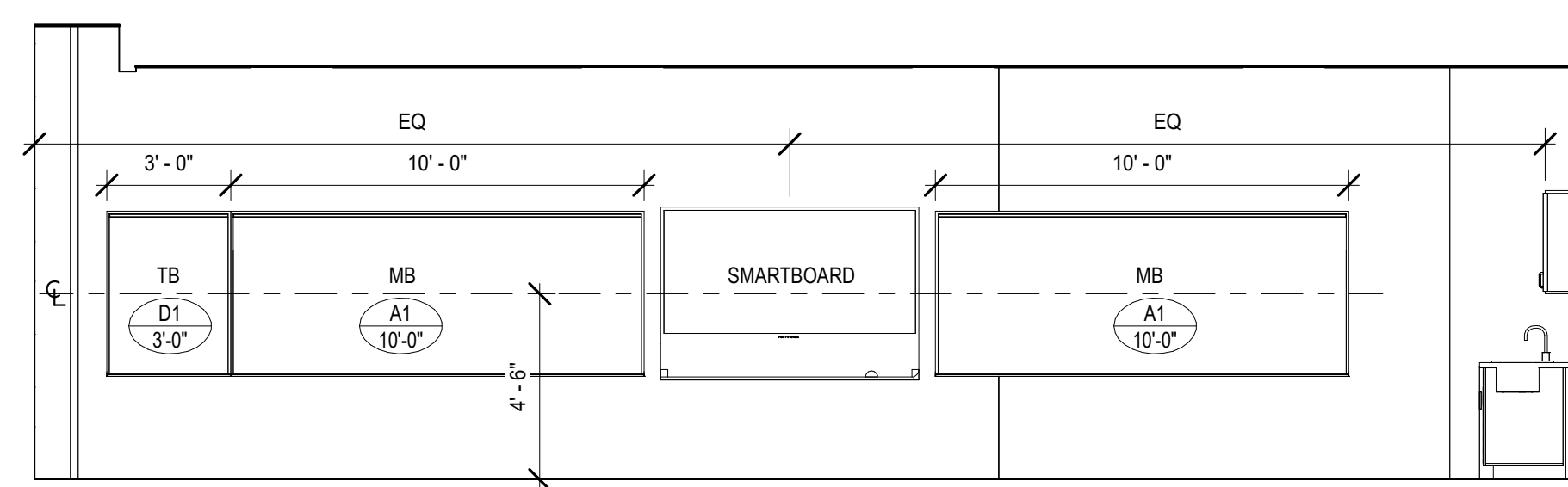
5 CLASSROOM TEACHING WALL, TYP.  
1/4" = 1'-0"



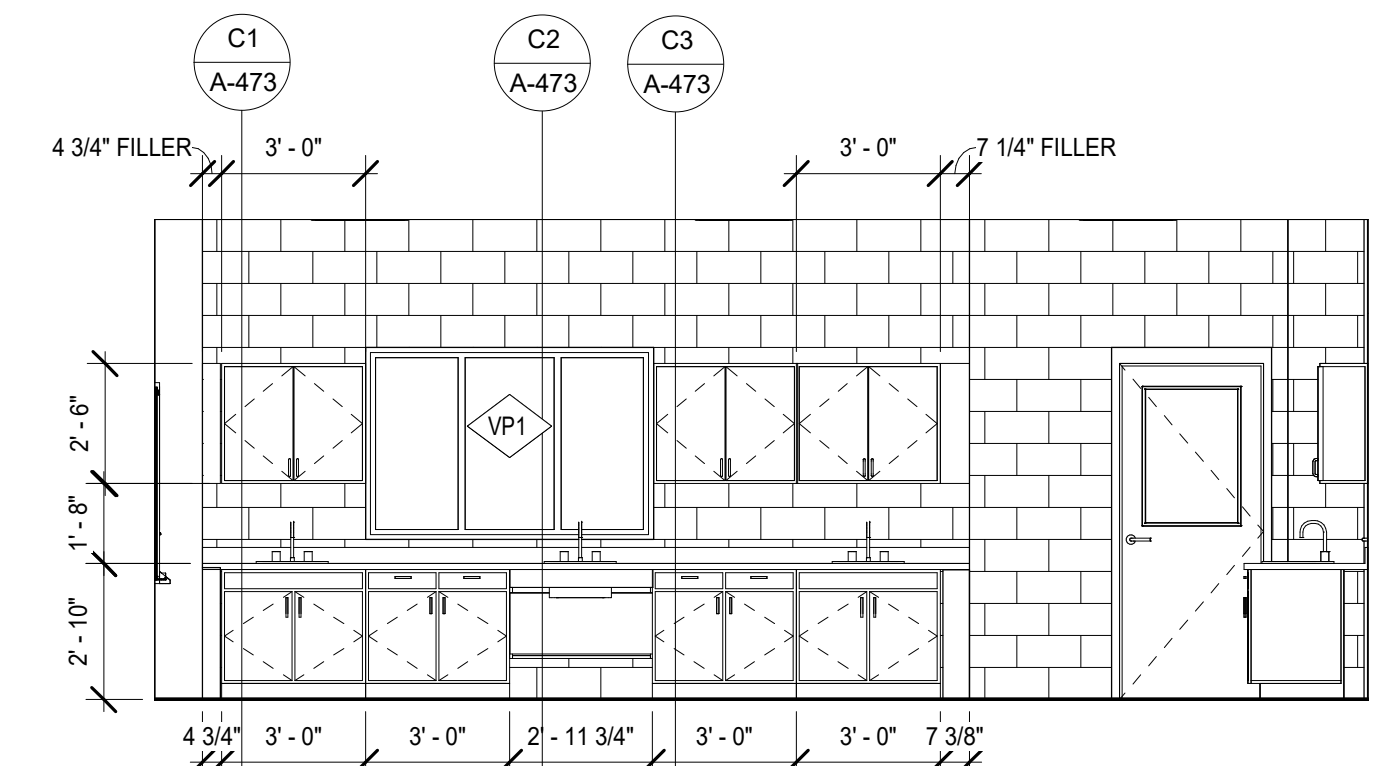
6 CLASSROOM BACK WALL, TYP.  
1/4" = 1'-0"



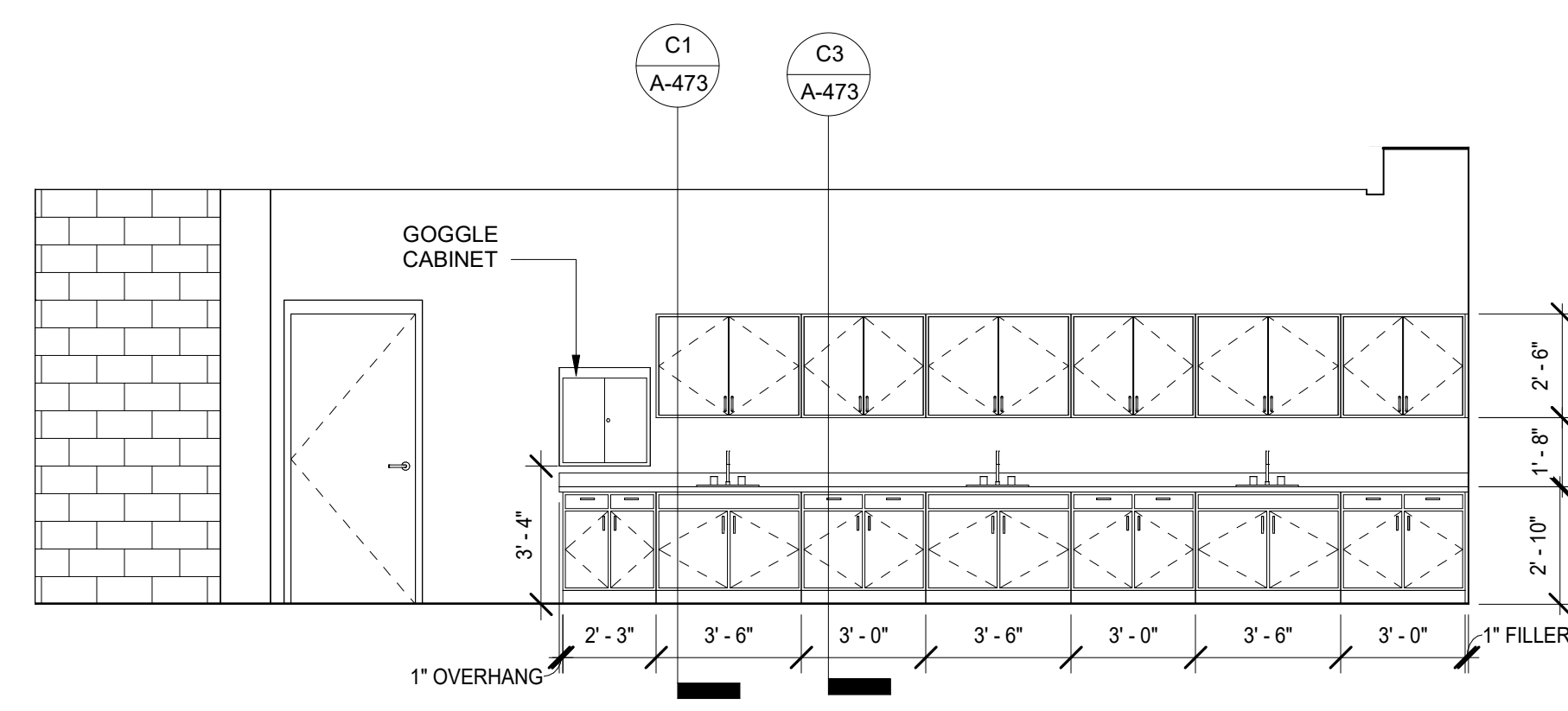
1 MARKERBOARDS/TACKBOARDS  
1/4" = 1'-0"



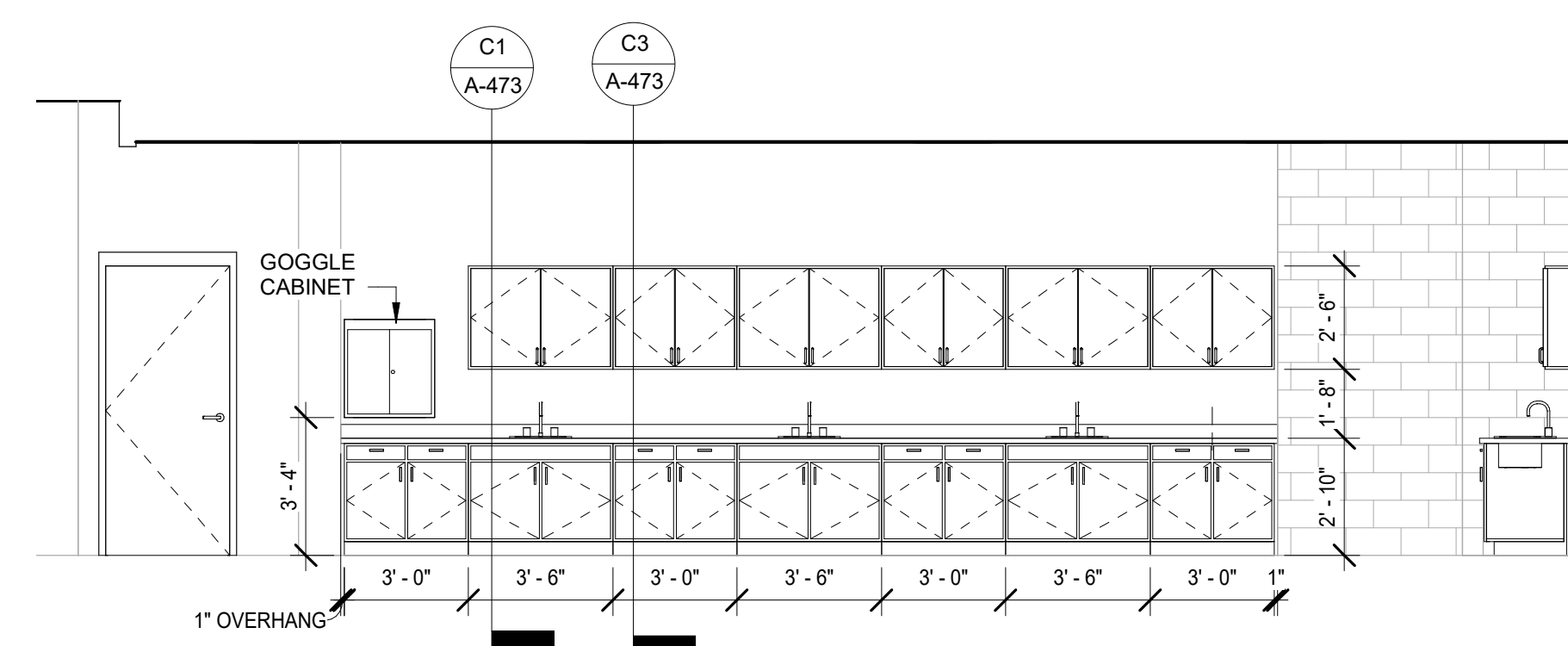
C1 ELEVATION - SCIENCE ROOMS  
1/4" = 1'-0"



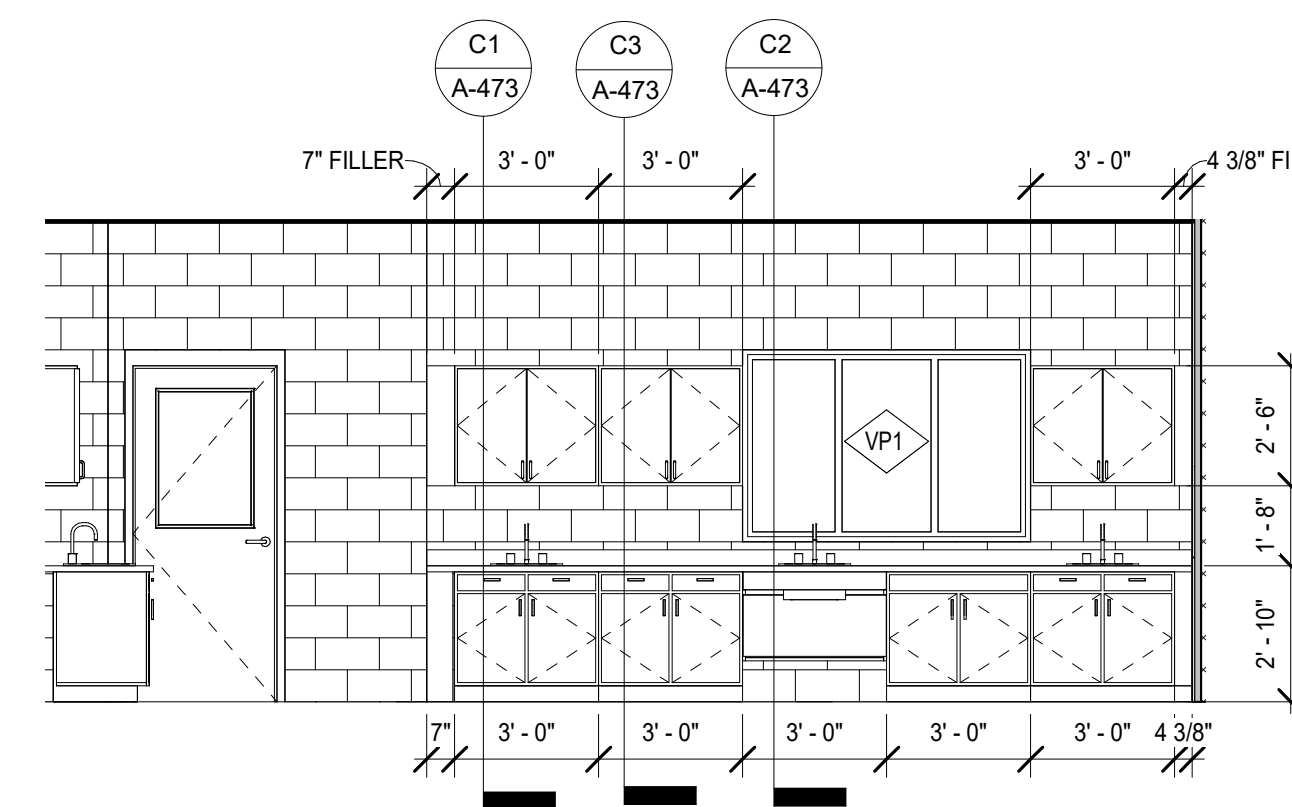
C3 CASEWORK ELEVATION - SCIENCE ROOMS  
1/4" = 1'-0"



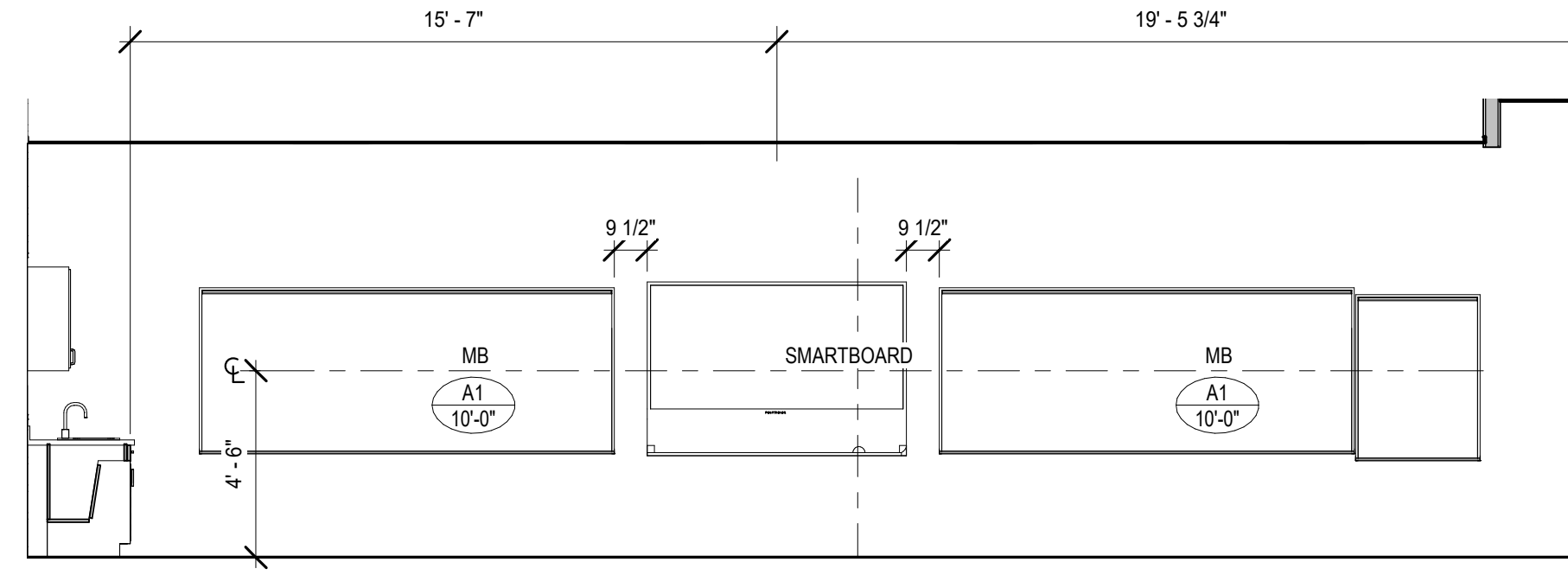
C4 ELEVATION - SCIENCE ROOMS  
1/4" = 1'-0"



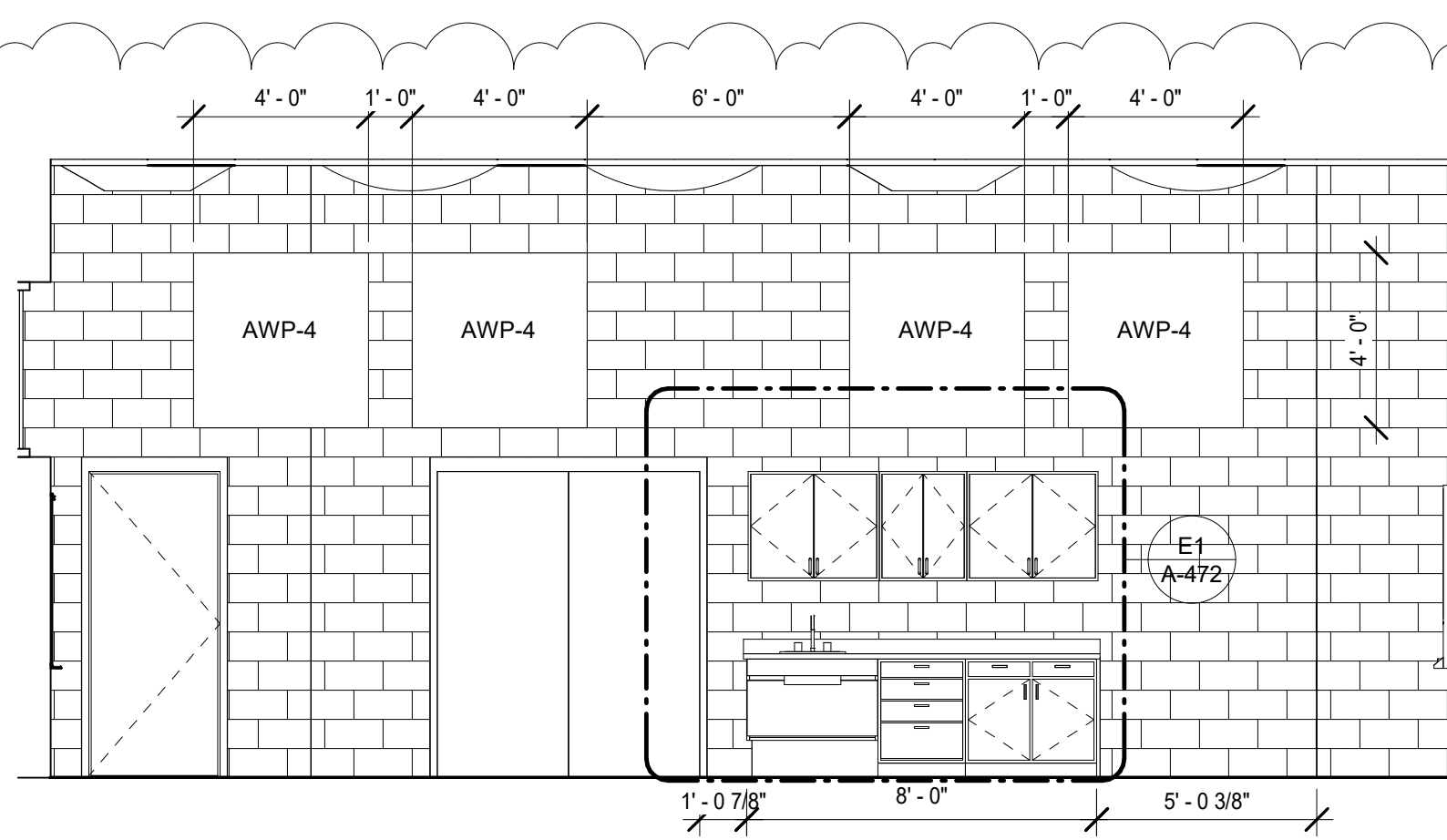
B1 ELEVATION - SCIENCE ROOMS  
1/4" = 1'-0"



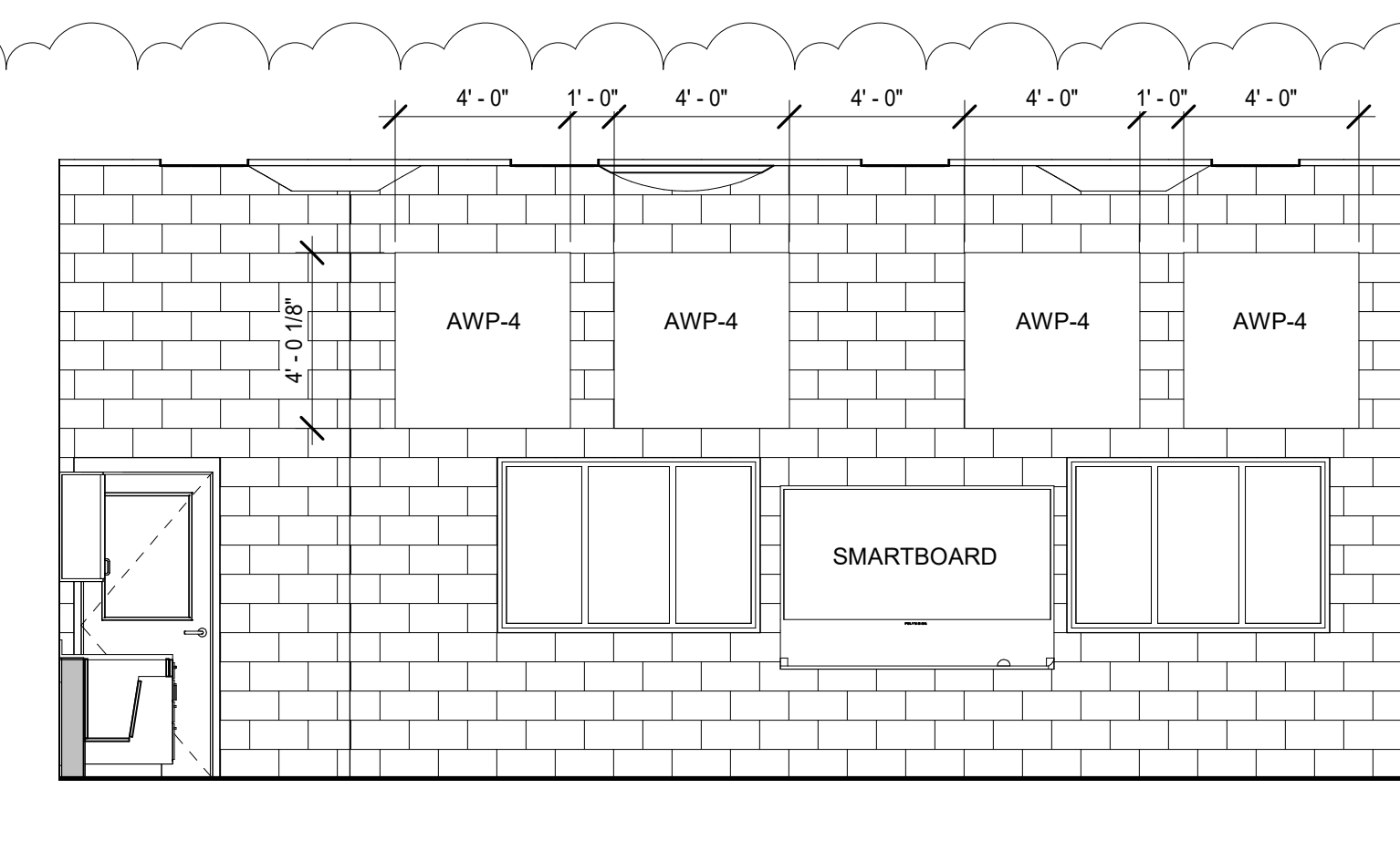
B3 ELEVATION - SCIENCE ROOMS  
1/4" = 1'-0"



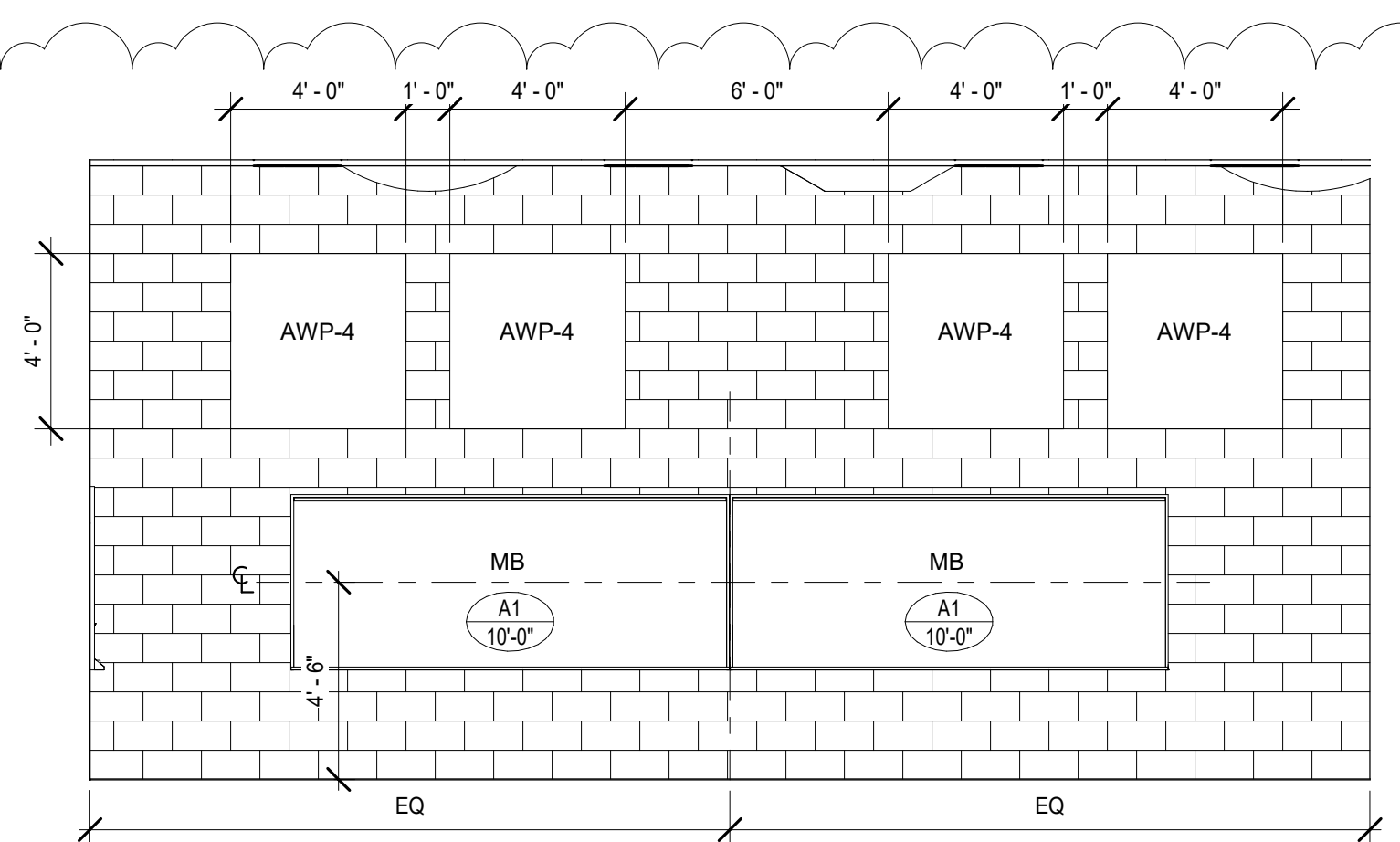
B4 ELEVATION - SCIENCE ROOMS  
1/4" = 1'-0"



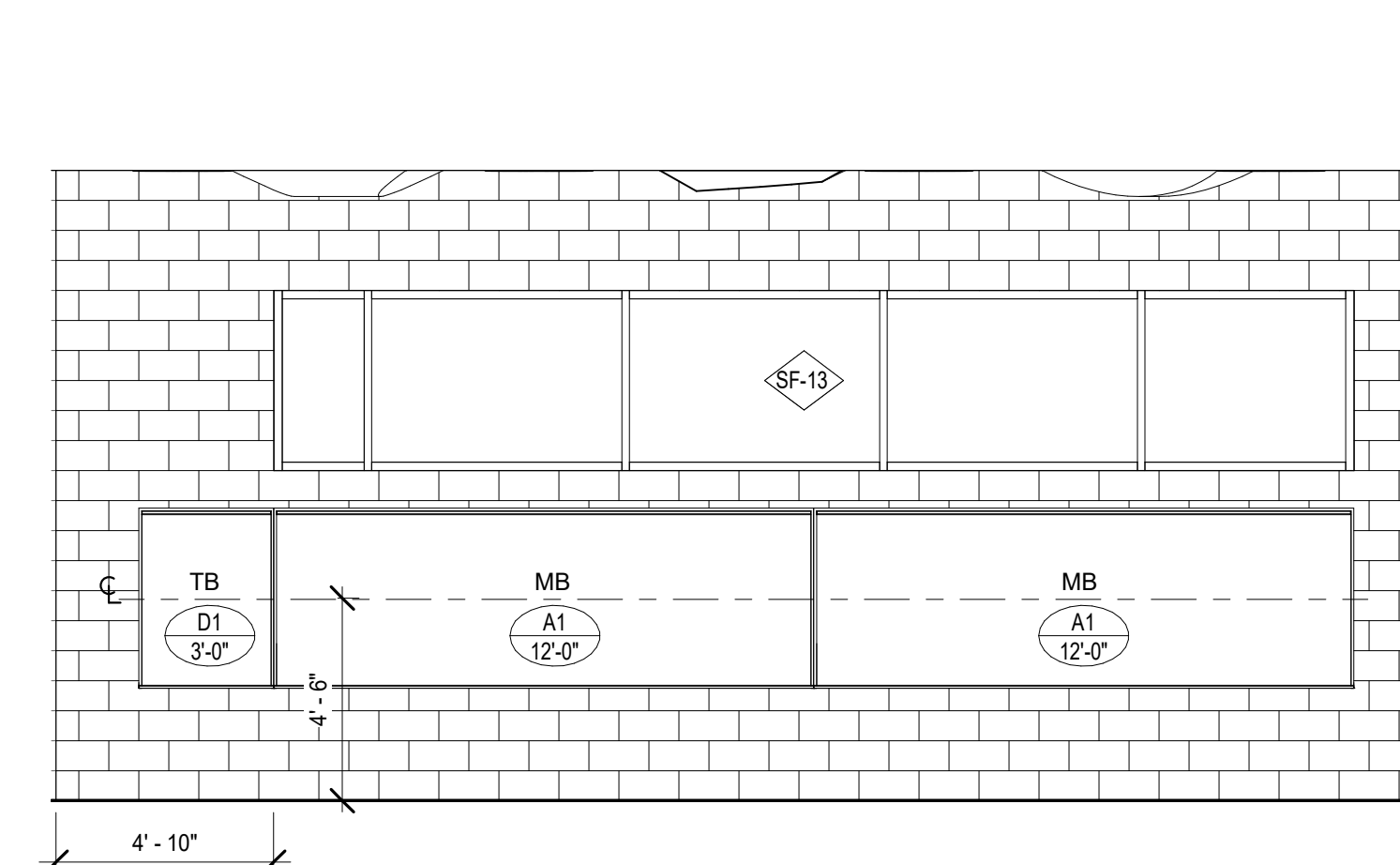
A1 INTERIOR ELEVATION - CHORUS (WEST)  
1/4" = 1'-0"



A2 INTERIOR ELEVATION - CHORUS (NORTH)  
1/4" = 1'-0"



A4 INTERIOR ELEVATION - CHORUS (EAST)  
1/4" = 1'-0"



A5 INTERIOR ELEVATION - CHORUS (SOUTH)  
1/4" = 1'-0"



1621 N. Lincoln Street  
Wilmington, DE 19806  
(P) 302 . 658 . 6426  
(F) 302 . 658 . 8431  
abhagen@ABHA.com  
www.ABHA.com

- CONSULTANTS  
Davis Bowen & Friedel, Inc.  
Civil Engineer  
1 Park Avenue  
Wintford, DE 19955
- Pilottown Engineering  
Structural Engineer  
17289 Nantux Commons Blvd, Unit 3  
Lewes, DE 19958
- Activitas, Inc.  
Landscape Architect  
20 Milton Street  
Dedham, MA 02026
- GIPE Associates  
MEP Engineer  
8719 Brooks Drive  
Easton, MD 21601
- Stages  
Theater & Acoustic Consultant  
732-333-8003
- Corsi Associates  
Food Service Consultant  
1489 Baltimore Pike  
Springfield, PA 19064

**CONSTRUCTION DOCUMENTS**

PROJECT  
NEW MIDDLE SCHOOL  
910 SHIELDS AVENUE  
LEWES, DE 19958

OWNER  
CAPE HENLOPEN  
SCHOOL DISTRICT  
1270 KINGS HWY  
LEWES, DE 19585

KEYPLAN

5	11/14/2022	ASI 013
4	04/20/2022	ADDENDUM NO. 3
3	05/17/2022	CONFORMANCE SET
2	03/18/2022	ISSUED FOR BID
1	02/04/2022	DFM FINAL REVIEW

PROJECT NUMBER:	2020-14
FILE NAME:	CHMS_Arch_v2020.rvt
DRAWN BY:	Author
CHECKED BY:	Checker

The professional services of ABHA Architects, Inc. are undertaken for and performed in the interest of Cape Henlopen School District. No contractual obligation is assumed by ABHA Architects, Inc. for the benefit of any other person involved in the project.  
These documents are owned by ABHA Architects, Inc. and shall not be used without written permission. Copyright ABHA Architects, Inc. © 2021

SHEET TITLE  
INTERIOR ELEVATIONS AND CASEWORK (COMMONS & CLASSROOMS)

**A-413**



1

2

3

4

5

6

FINISH SCHEDULE - FIRST FLOOR

Table with columns: ROOM No., ROOM NAME, FLOOR, BASE, NORTH, EAST, SOUTH, WEST, WAINSCOT, COUNTERTOP, VERTICAL SURFACE, FINISH NOTES. Lists various rooms like VESTIBULE, CORR, OFFICE, etc. with their respective finish specifications.

FINISH SCHEDULE - SECOND FLOOR

Table with columns: ROOM No., ROOM NAME, FLOOR, BASE, NORTH, EAST, SOUTH, WEST, WAINSCOT, COUNTERTOP, VERTICAL SURFACE, FINISH NOTES. Lists rooms like COMMONS, CORRIDOR, MEDIA CENTER, etc. with their respective finish specifications.

FINISH SCHEDULE - THIRD FLOOR

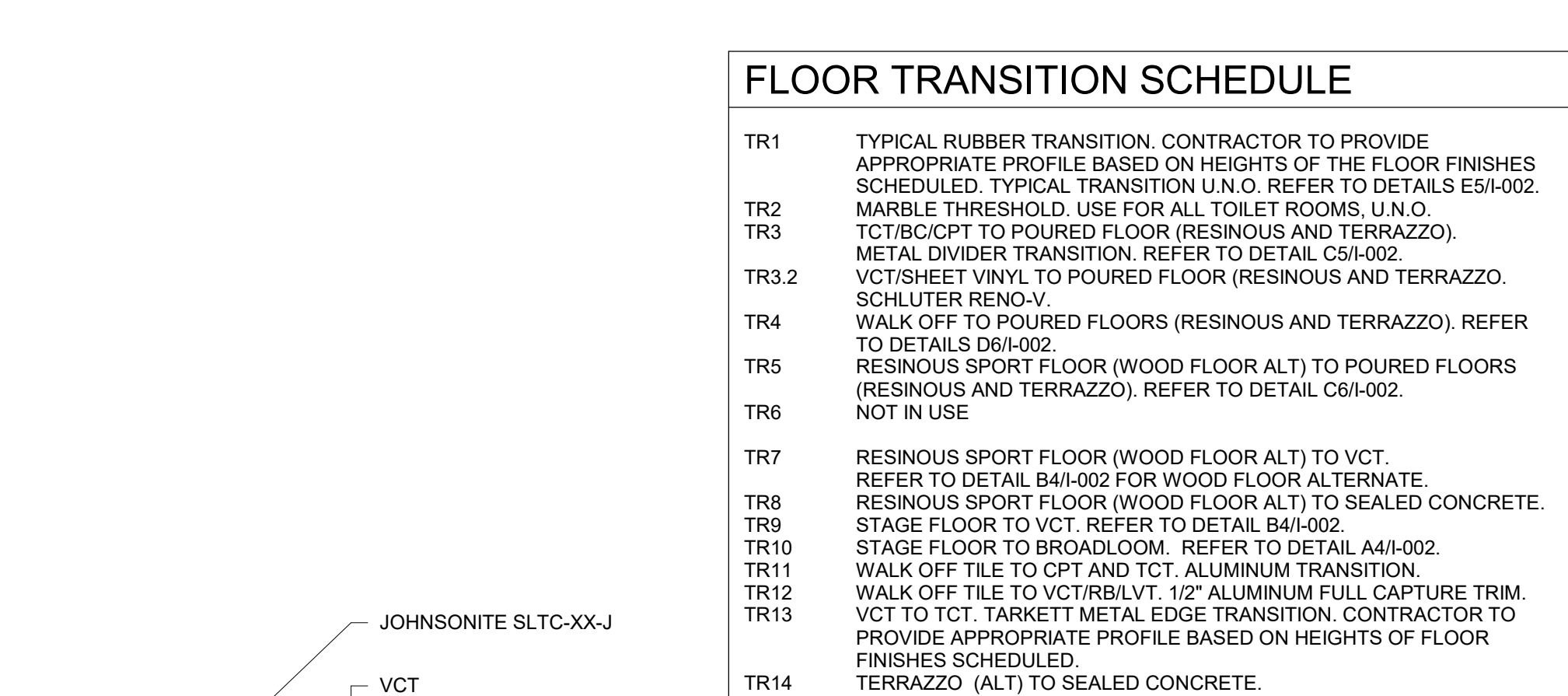
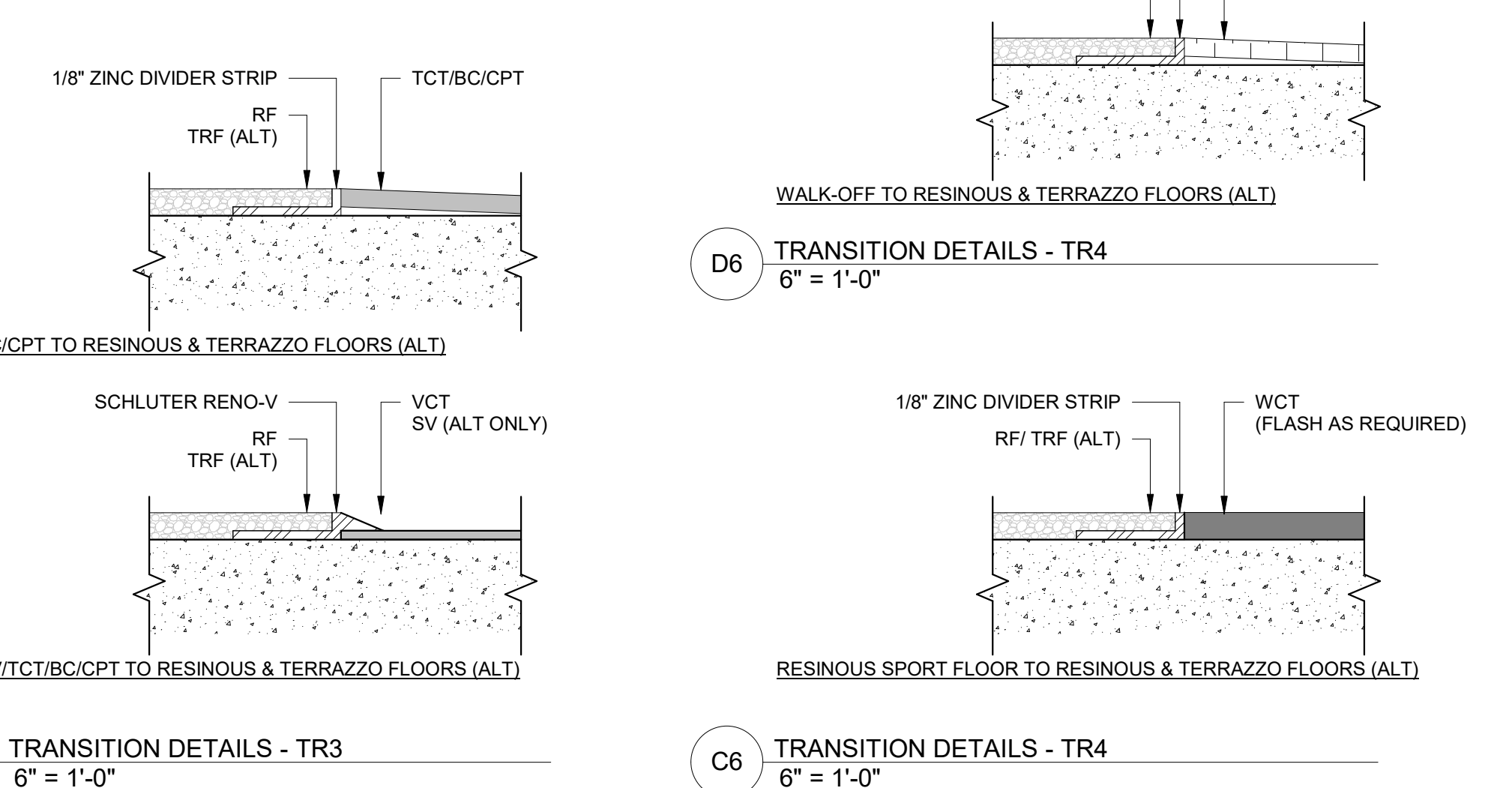
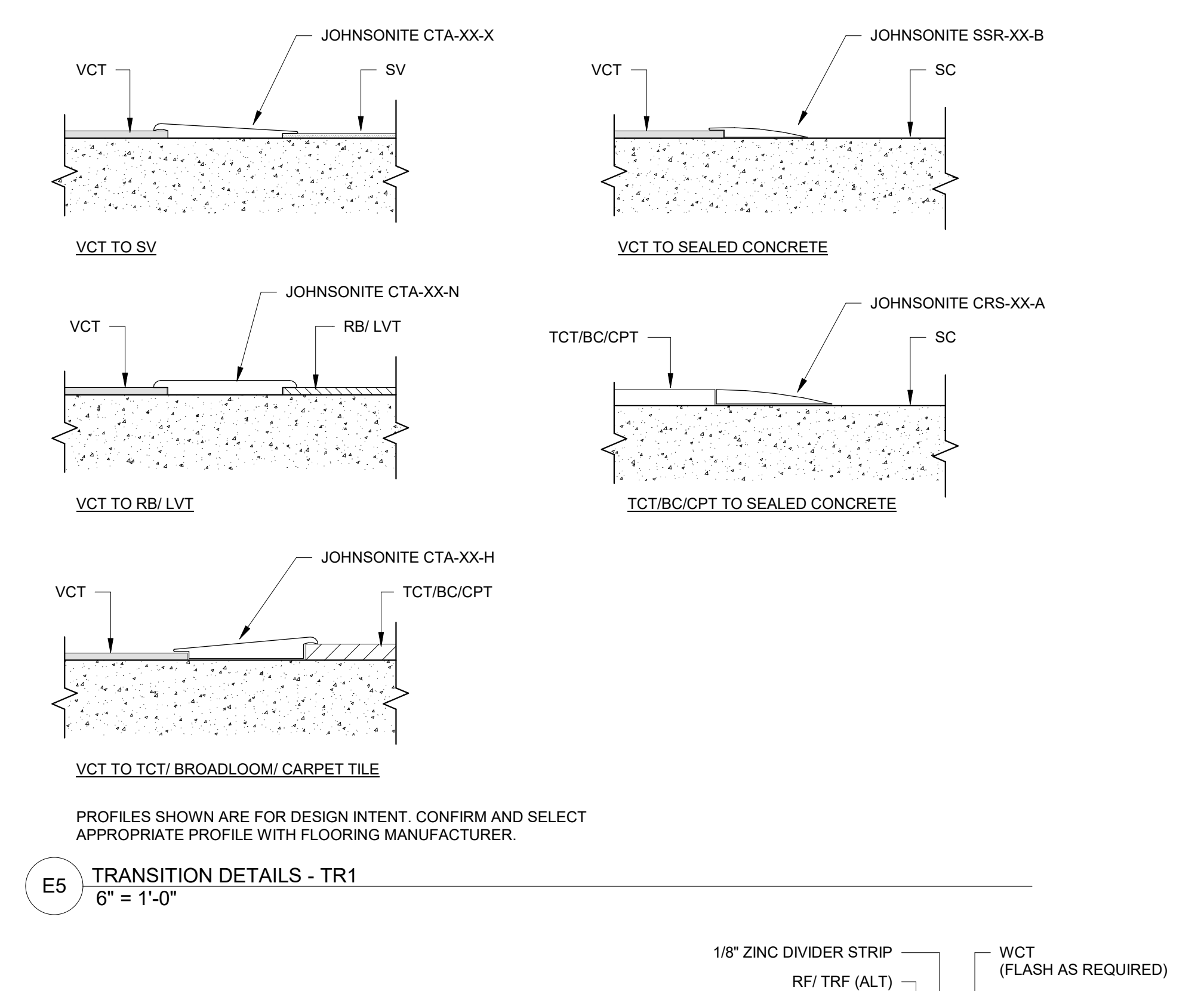
Table with columns: ROOM No., ROOM NAME, FLOOR, BASE, NORTH, EAST, SOUTH, WEST, WAINSCOT, COUNTERTOP, VERTICAL SURFACE, FINISH NOTES. Lists rooms like COMMONS, CORR, MEZZANINE, etc. with their respective finish specifications.

FINISH SCHEDULE - (ALTERNATE A-1)

Table with columns: ROOM No., ROOM NAME, FLOOR, BASE, NORTH, EAST, SOUTH, WEST, WAINSCOT, COUNTERTOP, VERTICAL SURFACE, FINISH NOTES. Lists rooms like 6TH GRADE CLASSROOM, 7TH GRADE CLASSROOM, etc. with their respective finish specifications.

A3 RSB COVE FLASHING Copy 1 3" = 1'-0"

A4 BROADLOOM TO WOOD FLOOR 6" = 1'-0"



FLOOR TRANSITION SCHEDULE

Table with columns: TR#, DESCRIPTION, and NOTES. Lists transition types like TR1 (Typical Rubber Transition), TR2 (Marble Threshold), etc.

FINISH SCHEDULE NOTES

- List of 28 numbered notes providing detailed instructions for floor finishes, transitions, and materials, including references to other sheets and specifications.

ABHA architects logo and contact information: 1621 N. Lincoln Street, Wilmington, DE 19806. Phone: (P) 302.658.6426, (F) 302.658.8431. Email: abhagen@ABHA.com. Website: www.ABHA.com

CONSULTANTS: Davis Bowen & Friedel, Inc. Civil Engineer; Plattown Engineering Structural Engineer; Activitas, Inc. Landscape Architect; GIPE Associates MEP Engineer; Stages Theater & Acoustic Consultant; Corsi Associates Food Service Consultant.

CONSTRUCTION DOCUMENTS

PROJECT: NEW MIDDLE SCHOOL. 910 SHIELDS AVENUE, LEWES, DE 19958. OWNER: CAPE HENLOPEN SCHOOL DISTRICT. 1270 KINGS HWY, LEWES, DE 19958.

KEYPLAN: FINISH SCHEDULE. Includes a grid reference table and project information: PROJECT NUMBER: CHMS\_Arch\_v2020.rvt, FILE NAME: CHMS\_Arch\_v2020.rvt, DRAWN BY: Author, CHECKED BY: Checker.

I-002