

1

2

3

4

5

6

1 SECOND FLOOR FRAMING PLAN - AREA B  
S-122 SEE DWG. S-102 FOR PLAN NOTES

SCALE: 1/8" = 1'-0"



1621 N. Lincoln Street  
Wilmington, DE 19806  
(P) 302.658.6426  
(F) 302.658.8431  
abhagen@ABHA.com  
www.ABHA.com

CONSULTANTS  
Davis Bowen & Friedel, Inc.  
Civil Engineer

Pilottown Engineering  
Structural Engineer

Activitas, Inc.  
Landscape Architect

GIPE Associates  
MEP Engineer

Stages  
Theater & Acoustic Consultant

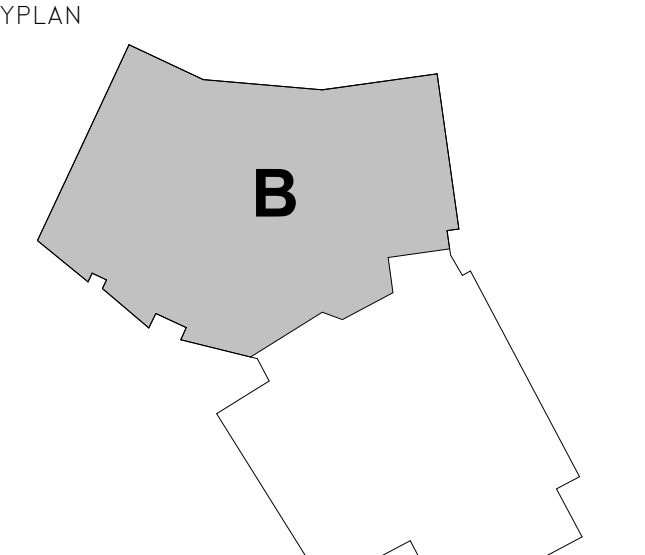
Corsi Associates  
Food Service Consultant

DESIGN  
DEVELOPMENT

PROJECT  
NEW MIDDLE SCHOOL

910 SHIELDS AVENUE  
LEWES, DE 19958

OWNER  
CAPE HENLOPEN  
SCHOOL DISTRICT  
1270 KINGS HWY  
LEWES, DE 19585



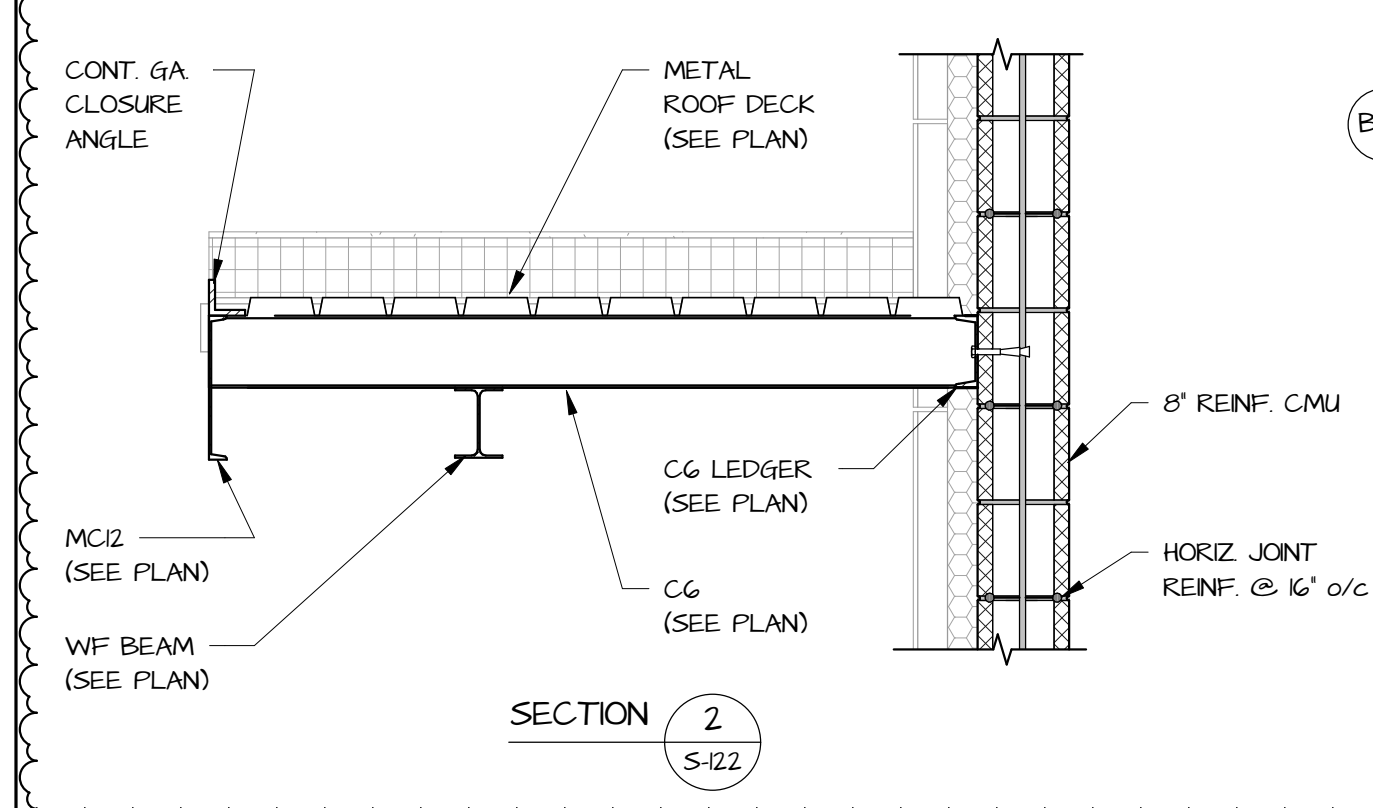
MARK	DATE	DESCRIPTION
1	11/30/22	ASI 018 MISC STEEL COORDINATION
2	08/15/22	RFI 21
3	05/17/22	ADDENDA 5
4	04/11/22	CONFORMANCE SET
5	03/18/22	ADDENDA 2
6		ISSUE FOR BID

PROJECT NUMBER: 118.010  
FILE NAME: ---  
DRAWN BY: J. RODGERS  
CHECKED BY: J. BAKER

The professional services of ABHA Architects, Inc. are undertaken for and performed in the interest of Cape Henlopen School District. No contractual obligation is assumed by ABHA Architects, Inc. for the benefit of any other person involved in the project.

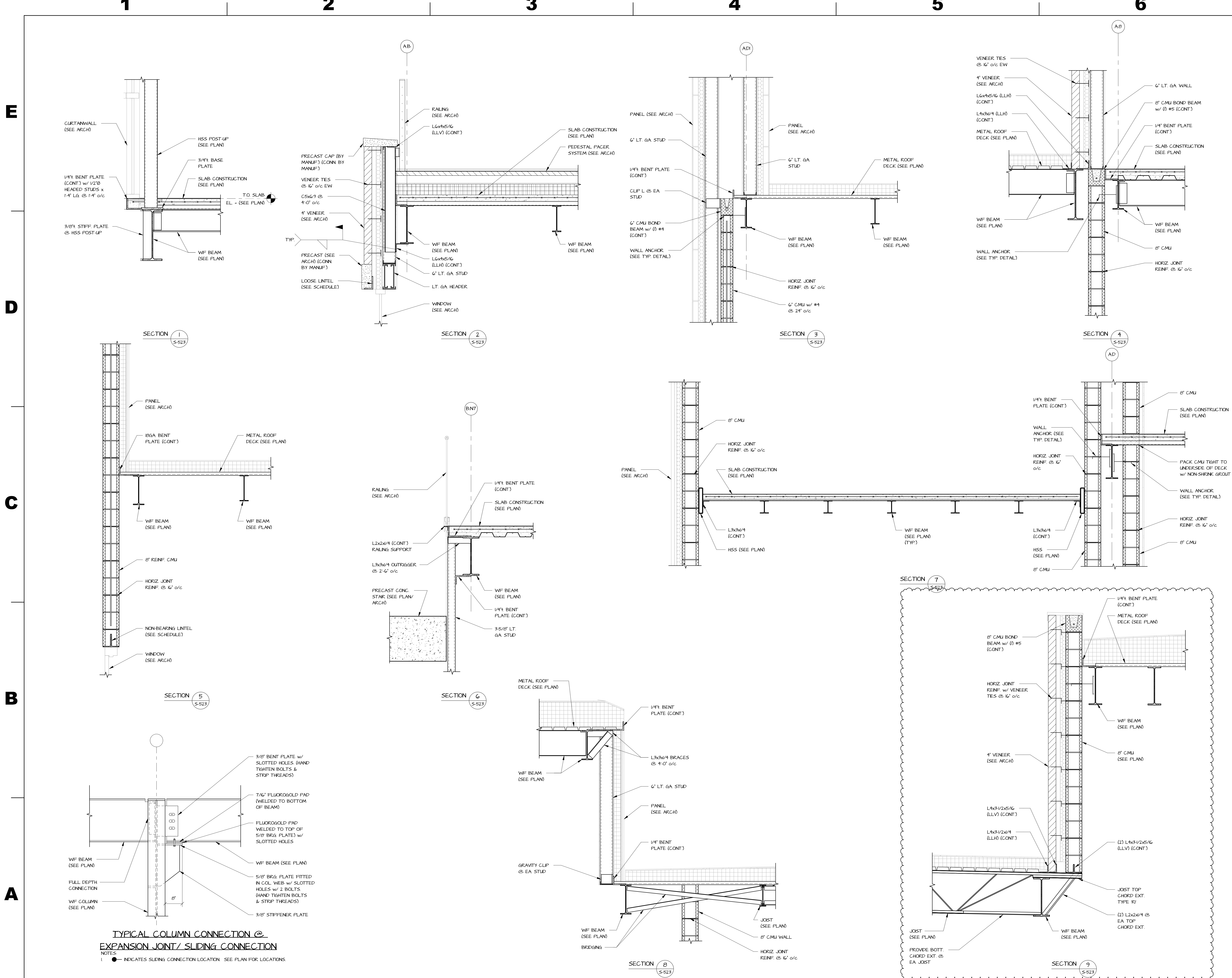
SHEET TITLE  
SECOND FLOOR FRAMING  
PLAN - AREA B

S-122



11/30/2022 11:17:39 AM





**TYPICAL COLUMN CONNECTION @ EXPANSION JOINT/ SLIDING CONNECTION**  
 NOTES:  
 1. ● INDICATES SLIDING CONNECTION LOCATION. SEE PLAN FOR LOCATIONS.

**ABHA architects**

1621 N. Lincoln Street  
 Wilmington, DE 19806  
 (P) 302.658.6426  
 (F) 302.658.8431  
 abhagen@ABHA.com  
 www.ABHA.com

- CONSULTANTS**  
 Davis Bowen & Friedel, Inc.  
 Civil Engineer  
 1 Park Avenue  
 Windsor, DE 19806
- Pilottown Engineering  
 Structural Engineer  
 17585 Nassau Commons Blvd., Unit 3  
 Lewis, DE 19558  
 Job Number: 118.010
- Activitas, Inc.  
 Landscape Architect  
 70 Milton Street  
 Dedham, MA 02026
- GIPE Associates  
 MEP Engineer  
 8719 Brooks Drive  
 Easton, MD 21601
- Stages  
 Theater & Acoustic Consultant  
 732-333-8003
- Corsi Associates  
 Food Service Consultant  
 1489 Baltimore Pike  
 Springfield, PA 19064

**DESIGN DEVELOPMENT**

**PROJECT**  
 NEW MIDDLE SCHOOL

910 SHIELDS AVENUE  
 LEWES, DE 19958

**OWNER**  
 CAPE HENLOPEN  
 SCHOOL DISTRICT  
 1270 KINGS HWY  
 LEWES, DE 19585

**KEYPLAN**

MARK	DATE	DESCRIPTION
1	11/30/22	ASI 018 MISC STEEL COORDINATION
2	05/17/22	CONFORMANCE SET
2	04/11/22	ADDENDA 2
2	03/18/22	ISSUE FOR BID

PROJECT NUMBER: 118.010  
 FILE NAME: --  
 DRAWN BY: J. RODGERS  
 CHECKED BY: J. BAKER

**SHEET TITLE**  
 FRAMING SECTIONS

**S-523**