

1

2

3

4

5

6

E

D

C

B

A

E

D

C

B

A

KEYNOTES	
1	TRANSITION FROM VERTICAL TO HORIZONTAL AS REQUIRED FOR CONTINUOUS RUN AND EXTERNALLY LIT CORNERS.
2	REFER TO ARCHITECTURAL DRAWING A-411 FOR DIMENSIONS FROM LIGHTING FIXTURES TO ADJACENT SURFACES AND BETWEEN LIGHTING FIXTURES.
3	REFER TO ARCHITECTURAL DRAWING A-433 FOR DIMENSIONS FROM LIGHTING FIXTURES TO ADJACENT SURFACES AND BETWEEN LIGHTING FIXTURES.
4	REMOTE POWER SUPPLY FOR TYPE VV3 LUMINAIRES FED BY INVERTER.
5	REMOTE POWER SUPPLY FOR TYPE VV3 LUMINAIRES FED BY NORMAL POWER.



1621 N. Lincoln Street
Wilmington, DE 19806
(P) 302 . 658 . 6426
(F) 302 . 658 . 8431
abhagen@ABHA.com
www.ABHA.com

CONSULTANTS
Davis Bowen & Friedel, Inc.
Civil Engineer

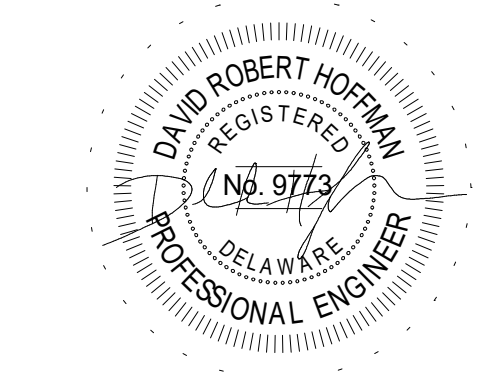
Pilltown Engineering
Structural Engineer

Activitas, Inc.
Landscape Architect

GIPE Associates
MEP Engineer

Stages
Theater & Acoustic Consultant

Corsi Associates
Food Service Consultant



PROJECT
NEW MIDDLE SCHOOL

910 SHIELDS AVENUE
LEWES, DE 19958

OWNER
CAPE HENLOPEN
SCHOOL DISTRICT

1270 KINGS HWY
LEWES, DE 19585

KEYPLAN

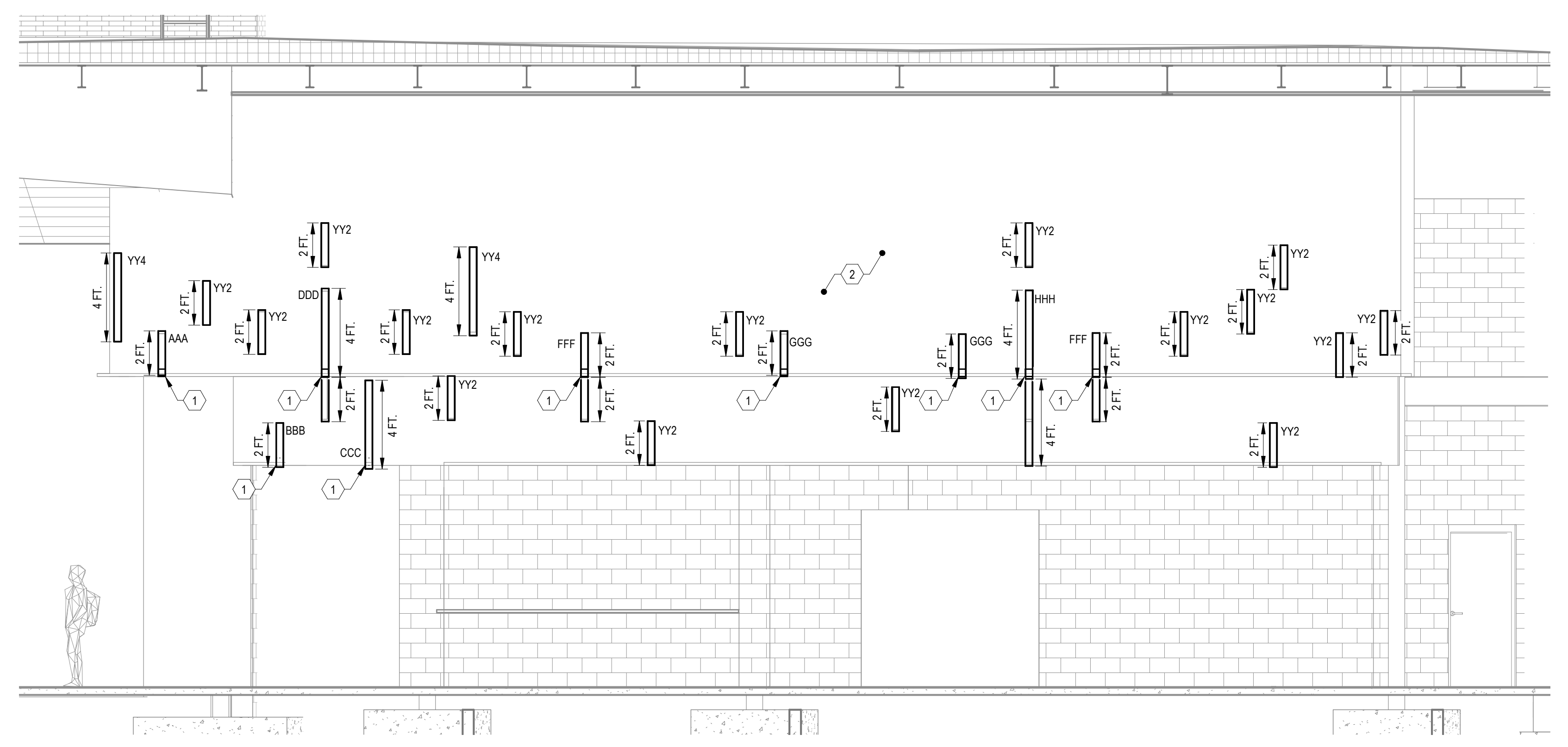
MARK	DATE	DESCRIPTION
2	11/30/2022	ASI-017
1	05/17/2022	CONFORMANCE SET
	04/13/2022	ADDENDUM 2

PROJECT NUMBER: 2020-14
FILE NAME: CHMS_Arch_v2020.rvt
DRAWN BY: MPV
CHECKED BY: CDH

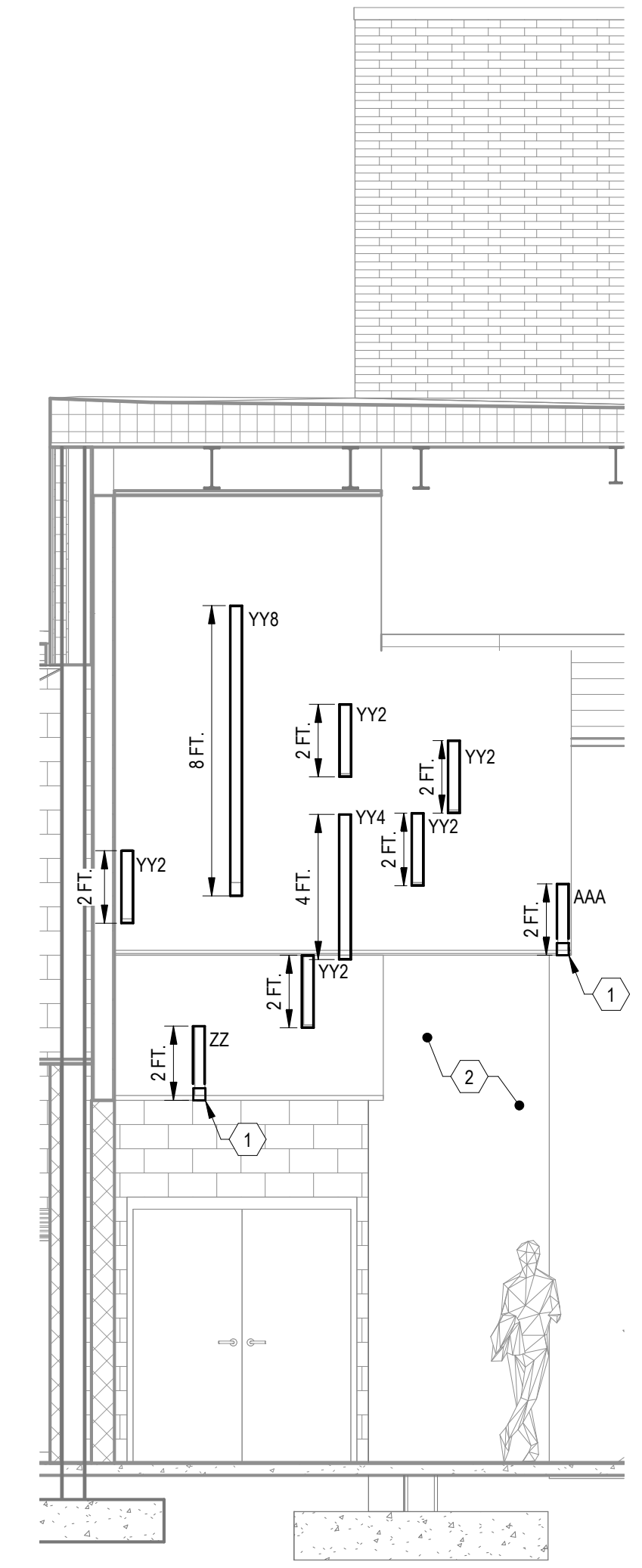
The professional services of ABHA Architects, Inc. are undertaken for and performed in the interest of Cape Henlopen School District. No contractual obligation is assumed by ABHA Architects, Inc. for the benefit of any other person involved in the project.
These documents are owned by ABHA Architects, Inc. and shall not be used without written permission. Copyright ABHA Architects, Inc. © 2021

SHEET TITLE
SECTIONS - ELECTRICAL

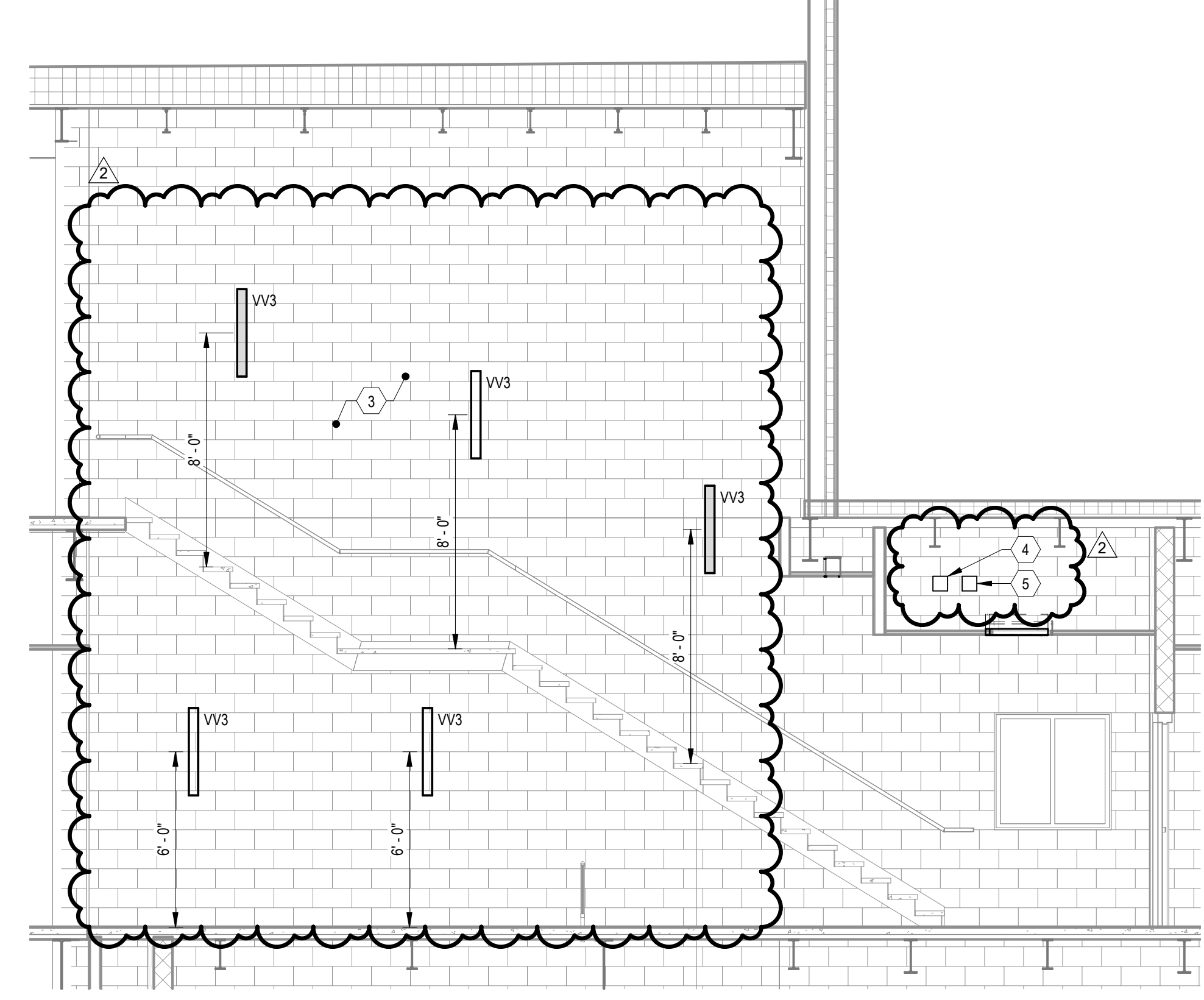
E-205



1 CAFETERIA B123 (NORTH) SECTION - LIGHTING
1/4" = 1'-0"



2 CAFETERIA B123 (SOUTH) SECTION - LIGHTING
1/4" = 1'-0"



3 STAIR C STC02 SECTION - LIGHTING
1/4" = 1'-0"

