

1

2

3

4

5

6

E

D

C

B

A



1621 N. Lincoln Street  
 Wilmington, DE 19806  
 (P) 302 . 658 . 6426  
 (F) 302 . 658 . 8431  
 abhagen@ABHA.com  
 www.ABHA.com

CONSULTANTS  
 Davis Bowen & Friedel, Inc.  
 Civil Engineer

1 Park Avenue  
 Windsor, DE 19983

Pilottown Engineering  
 Structural Engineer

17285 Nassau Commons Blvd. Unit 3  
 Lewes, DE 19958

Activitas, Inc.  
 Landscape Architect

70 Milton Street  
 Dedham, MA 02026

GIPE Associates  
 MEP Engineer

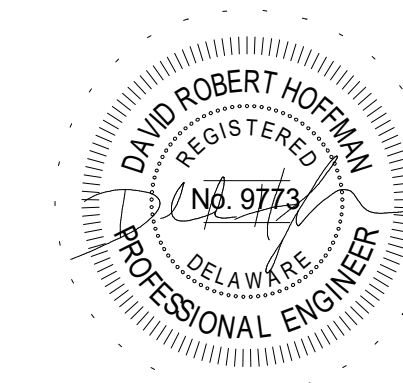
8719 Brooks Drive  
 Easton, MD 21601

Stages  
 Theater & Acoustic Consultant

732-333-8003

Corsi Associates  
 Food Service Consultant

1489 Baltimore Pike  
 Springfield, PA 19064



PROJECT  
 NEW MIDDLE SCHOOL

910 SHIELDS AVENUE  
 LEWES, DE 19958

OWNER  
 CAPE HENLOPEN  
 SCHOOL DISTRICT  
 1270 KINGS HWY  
 LEWES, DE 19585

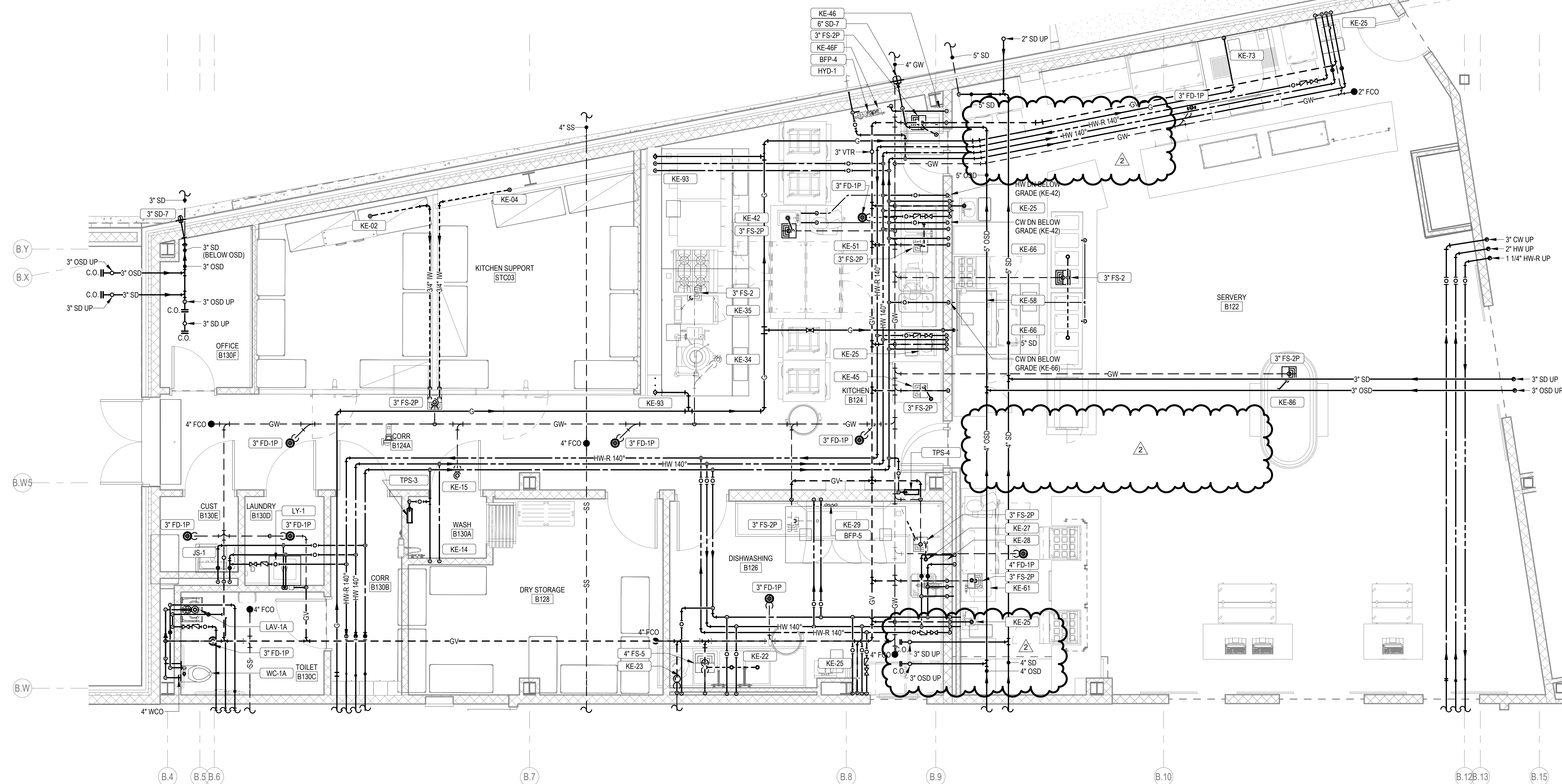
KEYPLAN

2	11/16/2022	ASI-010R
1	05/17/2022	CONFORMANCE SET
MARK	DATE	DESCRIPTION
PROJECT NUMBER: 2020-14		
FILE NAME: CHMS_Arch_v2020.rvt		
DRAWN BY: DMB		
CHECKED BY: DRH		

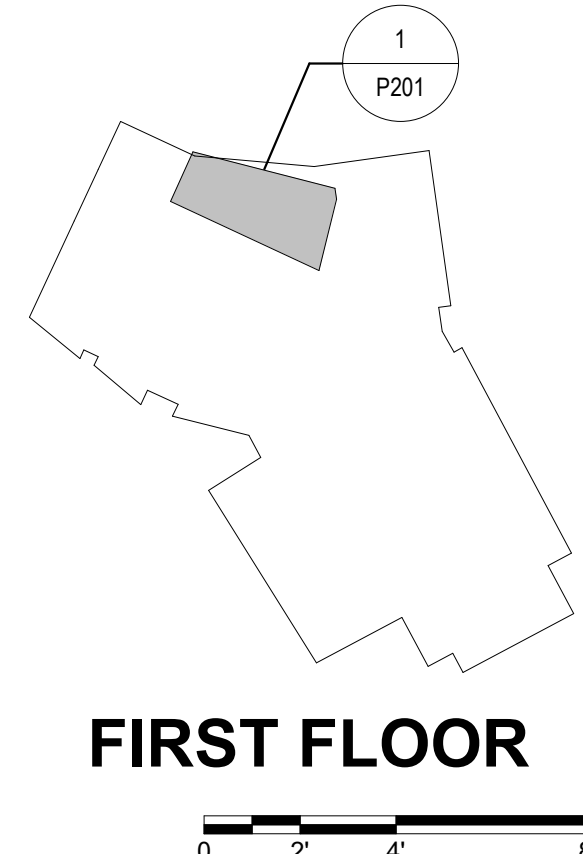
The professional services of ABHA Architects, Inc. are undertaken for and performed in the interest of Cape Henlopen School District. No contractual obligation is assumed by ABHA Architects, Inc. for the benefit of any other person involved in the project.  
 These documents are owned by ABHA Architects, Inc. and shall not be used without written permission. Copyright ABHA Architects, Inc. © 2021

SHEET TITLE  
 PART PLANS - PLUMBING

**P-201**



1 PART PLAN - KITCHEN B124 - PLUMBING  
 1/4" = 1'-0"



FIRST FLOOR  
 0 2 4 8'