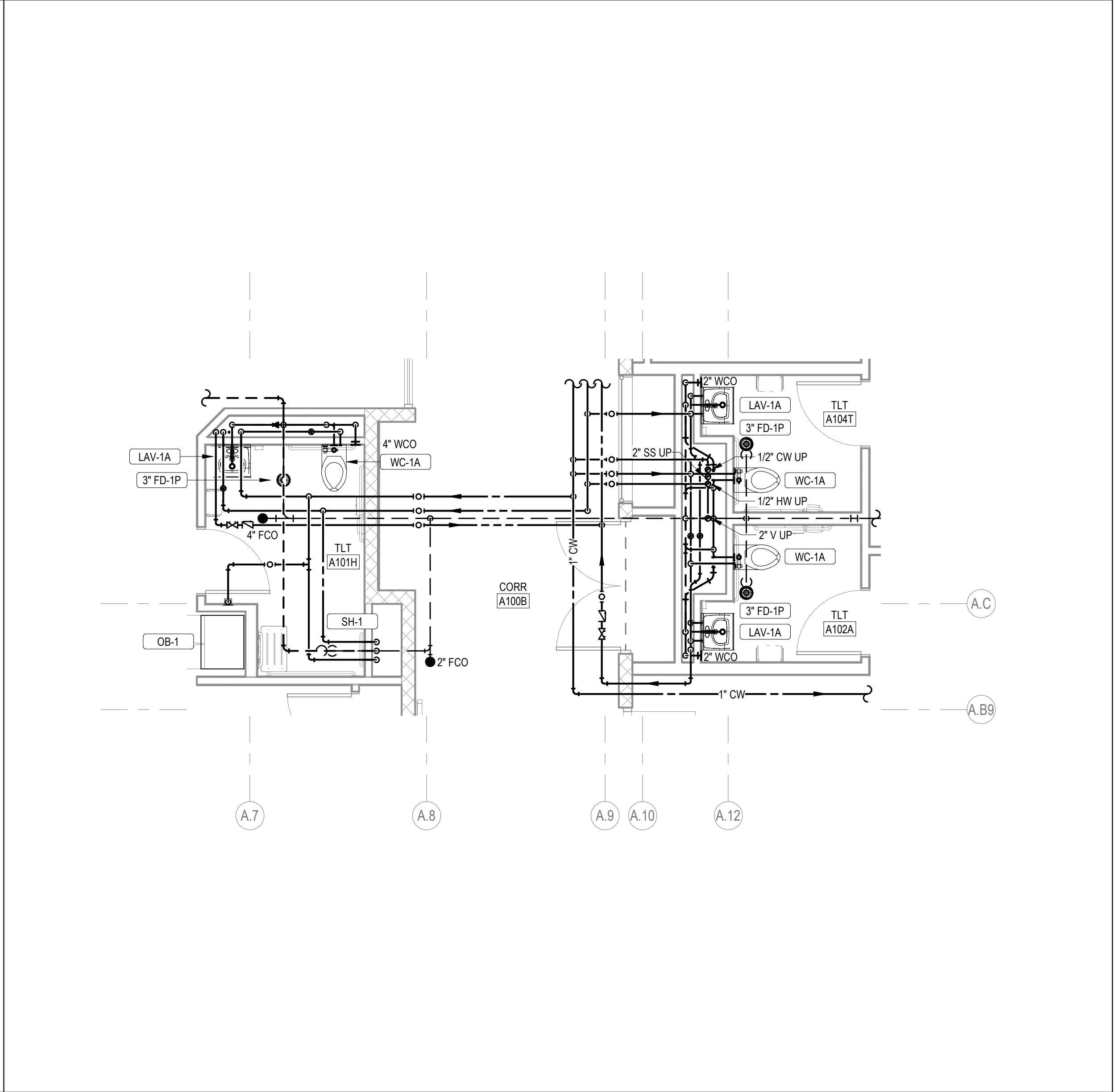
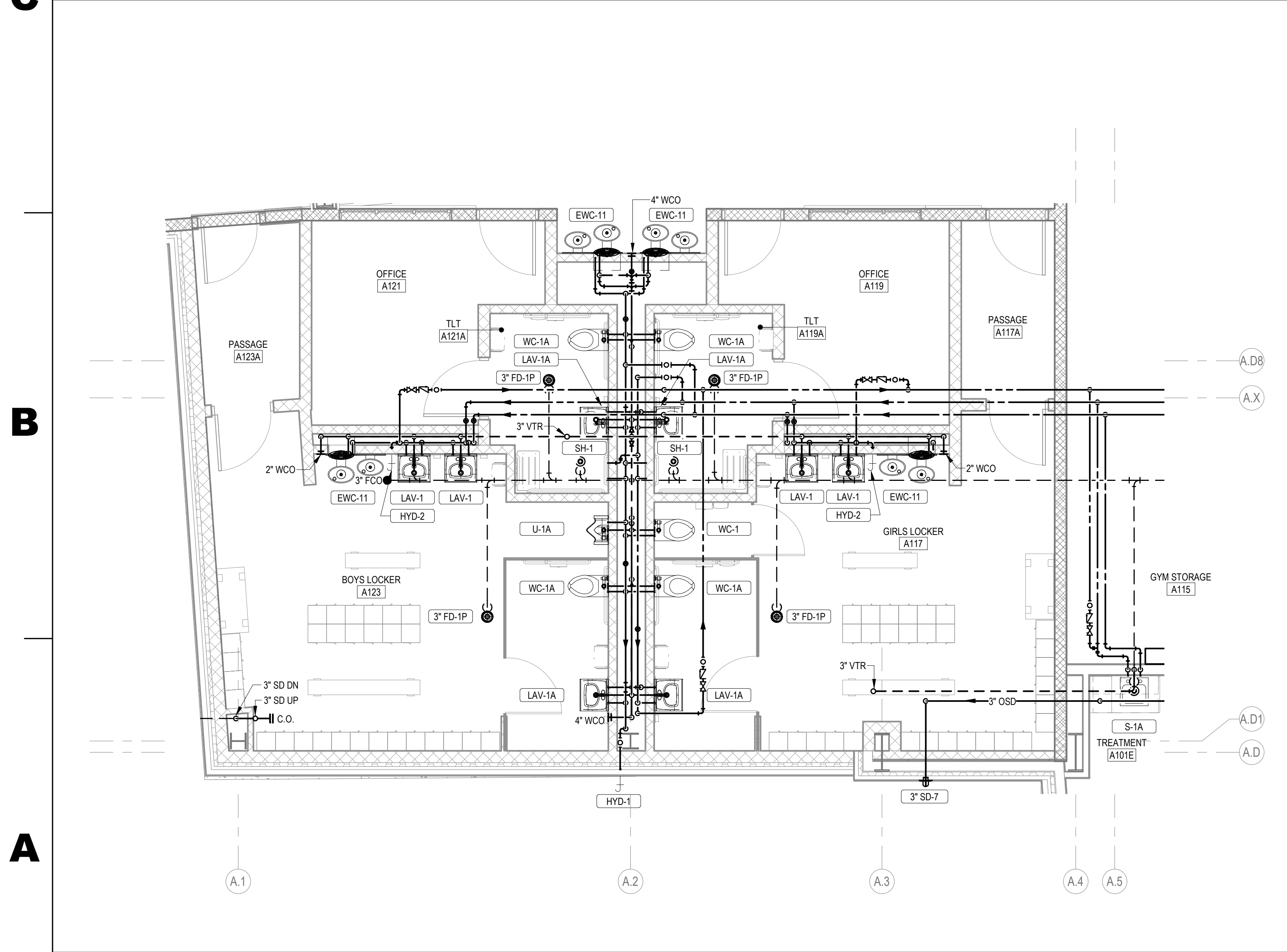


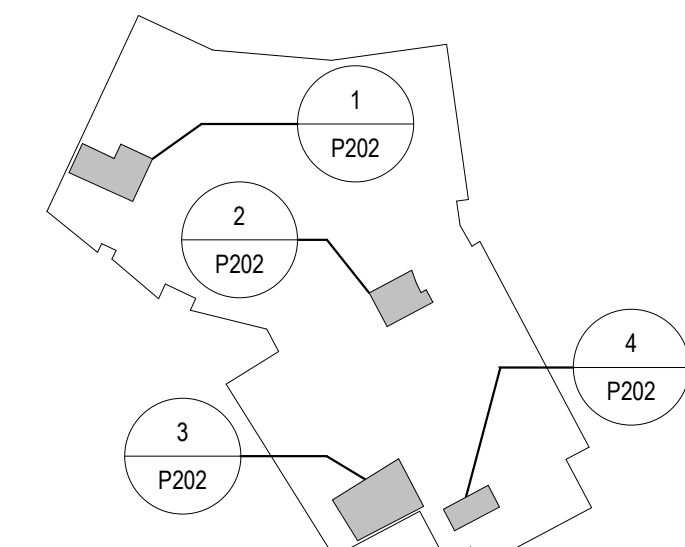
1 PART PLAN - MECHANICAL B140 - PLUMBING
1/4" = 1'-0"

2 PART PLAN - MENS A132 & WOMENS A133 - PLUMBING
1/4" = 1'-0"



3 PART PLAN - LOCKER A117 & A123 - PLUMBING
1/4" = 1'-0"

4 PART PLAN - TOILET A101H, A102A & A104T
1/4" = 1'-0"



FIRST FLOOR
0 2' 4' 8'



1621 N. Lincoln Street
Wilmington, DE 19806
(P) 302.658.6426
(F) 302.658.8431
abhagen@ABHA.com
www.ABHA.com

CONSULTANTS
Davis Bowen & Friedel, Inc.
Civil Engineer

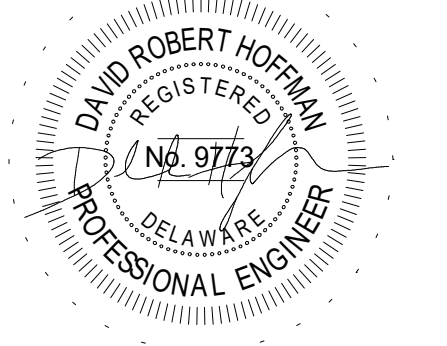
Piltown Engineering
Structural Engineer

Activitas, Inc.
Landscape Architect

GIPE Associates
MEP Engineer

Stages
Theater & Acoustic Consultant

Corsi Associates
Food Service Consultant



PROJECT
NEW MIDDLE SCHOOL

910 SHIELDS AVENUE
LEWES, DE 19958

OWNER
CAPE HENLOPEN
SCHOOL DISTRICT

1270 KINGS HWY
LEWES, DE 19585

KEYPLAN

MARK	DATE	DESCRIPTION
3	11/28/2022	ASI-014
2	07/07/2022	ASI-01
1	05/17/2022	CONFORMANCE SET

PROJECT NUMBER: 2020-14
FILE NAME: CHMS_Arch_v2020.rvt
DRAWN BY: DMB
CHECKED BY: DRH

The professional services of ABHA Architects, Inc. are undertaken for and performed in the interest of Cape Henlopen School District. No contractual obligation is assumed by ABHA Architects, Inc. for the benefit of any other person involved in the project.
These documents are owned by ABHA Architects, Inc. and shall not be used without written permission. Copyright ABHA Architects, Inc. © 2021

SHEET TITLE
PART PLANS - PLUMBING

P-202