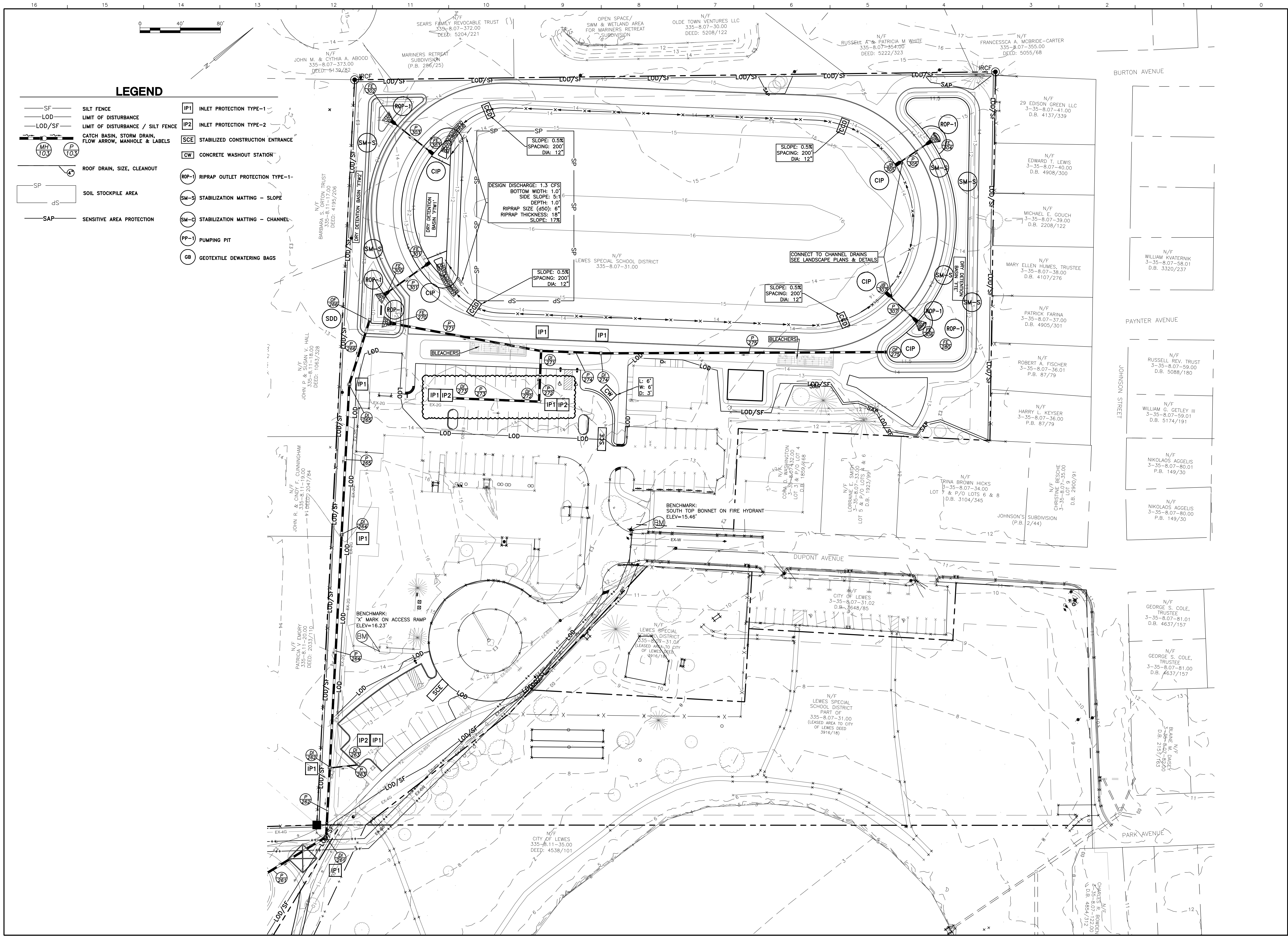


LEWES MIDDLE SCHOOL
CAPE HENLOPEN SCHOOL DISTRICT
CITY OF LEWES, SUSSEX COUNTY, DELAWARE

DAVIS, BOWEN & FRIEDEL, INC.
ARCHITECTS ENGINEERS SURVEYORS
SUSSEX COUNTY, DELAWARE
EASTON, MARYLAND
CONSTRUCTION SITE SWM PLAN



**LEWES MIDDLE SCHOOL
CAPE HENLOPEN SCHOOL DISTRICT
CITY OF LEWES, SUSSEX COUNTY, DELAWARE**

Revisions:
05/17/22 CONFORMANCE SET
07/05/22 UNREC COMMENTS
07/05/22 MOVE POLE BUILDINGS
08/11/22 STORM STRUCTURE AND
PIPE CORRECTIONS
02/17/23 SEQUENCE OF
CONSTRUCTION
04/27/23 STORM INLETS & PIPES
272-273, 255-256,
GRADING.

Date: **JUNE 4, 2021**
Scale: **1"=40'**
Dwn.By: **TPS/IMO**
Proj.No.: **3153A002.D01**
Dwg.No.:

C-403

DAVIS, BOWEN & FRIEDEL, INC.
ARCHITECTS ENGINEERS SURVEYORS
SUSSEX COUNTY, DELAWARE
EASTON, MARYLAND
CONSTRUCTION SITE SWM PLAN

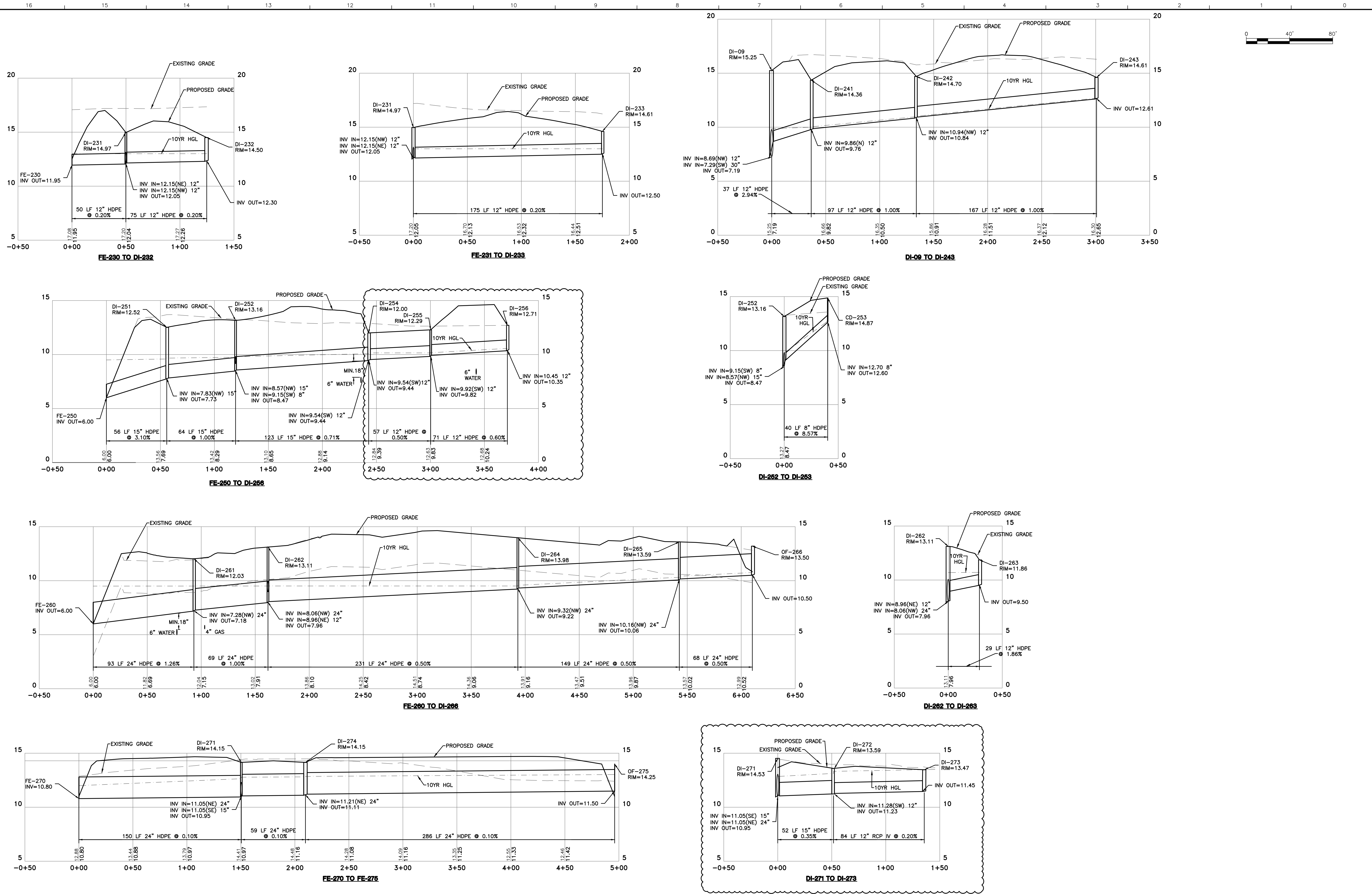
P:\ABHA\3153A002 Lewes Middle School\Design\3153A002 LMS Stormwater Schedules.dwg Apr 27, 2023 - 10:22am scal

DRAINAGE INLET SCHEDULE									
LABEL	DESCRIPTION			T.G. ELEV.	INV. IN	INV. IN	INV. OUT	PIPE ANGLE	
	BOX	TOP UNIT	GRATE					(L)	(W)
DI101	34"x24"	C	TYPE 1	8.80			6.13	18.75	-
DI103	34"x24"	C	TYPE 1	9.32			7.23	3.45	-
DI111	34"x24"	C	TYPE 1	10.39	6.10	5.95	5.85	5.77	0.00
DI112	34"x24"	C	TYPE 1	10.10			7.00	5.44	-
DI113	34"x24"	C	TYPE 1	10.78		6.18	6.08	0.00	-
DI114	34"x24"	C	TYPE 1	11.86		6.64	6.54	0.00	-
DI115	34"x24"	C	TYPE 1	11.86		7.06	6.96	0.00	7.54
DI116	34"x24"	C	TYPE 1	11.47	7.45	7.30	7.20	9.03	4.90
DI117	34"x24"	C	TYPE 1	12.03			7.83	0.00	-
DI118	48"x30"	C	TYPE 1	11.05		7.88	7.78	5.92	32.02
DI119	34"x24"	A	TYPE 3	11.00	8.45	8.45	8.35	11.12	11.03
DI120	34"x24"	C	TYPE 1	12.19			9.45	17.62	-
DI121	34"x24"	A	TYPE 3	11.26	8.96	8.96	8.86	14.70	0.00
DI122	34"x24"	C	TYPE 1	12.63		9.40	9.30	0.00	-
DI123	34"x24"	C	TYPE 1	12.11		9.84	9.74	30.26	13.75
DI124	34"x24"	C	TYPE 1	13.89		11.10	11.00	0.00	-
DI125	34"x24"	C	TYPE 1	12.65			9.65	0.00	-
DI126	34"x24"	C	TYPE 1	13.99			11.30	0.00	-
DI131	34"x24"	C	TYPE 1	10.26		7.28	7.18	0.00	-
DI132	34"x24"	C	TYPE 1	10.65		7.59	7.49	0.00	-
DI133	34"x24"	C	TYPE 1	11.73		8.19	8.09	0.00	-
DI134	34"x24"	C	TYPE 1	11.73		8.67	8.57	0.00	-
DI135	34"x24"	C	TYPE 1	12.03		8.81	8.71	0.00	-
DI136	34"x24"	C	TYPE 1	12.65			9.00	0.00	-
DI141	34"x24"	C	TYPE 1	10.89		7.92	7.82	4.00	3.90
DI142	34"x24"	C	TYPE 1	10.52			8.00	4.45	-
DI151	34"x24"	C	TYPE 1	11.87	7.46	7.46	7.36	9.66	2.90
DI152	34"x24"	C	TYPE 1	11.84		8.20	8.10	5.92	19.83
DI153	34"x24"	C	TYPE 1	11.52			8.50	0.00	-
DI171	48"x48"	A	TYPE 3	11.00		7.34	7.24	0.00	0.00
DI172	48"x48"	A	TYPE 1	11.65	8.70	7.80	7.70	20.26	0.00
DI173	34"x24"	C	TYPE 1	11.70			9.18	0.00	-
DI174	48"x48"	A	TYPE 1	12.95	9.23	8.33	8.23	0.00	0.00
DI175	34"x24"	C	TYPE 1	12.95			9.71	0.00	-
DI176	48"x48"	A	TYPE 1	13.04	9.69	8.79	8.69	0.00	0.00
DI177	34"x24"	C	TYPE 1	13.04			10.17	0.00	-
DI178	48"x48"	C	TYPE 1	14.38	10.02	9.12	9.02	25.06	0.00
DI179	34"x24"	C	TYPE 1	14.38			10.50	0.00	-
DI191	34"x24"	C	TYPE 1	12.47			10.12	-	6.80
DI193	34"x24"	C	TYPE 1	12.30		9.65	9.40	4.30	6.80
DI195	34"x24"	C	TYPE 1	15.47			9.63	0.00	-
DI201	48"x48"	A	TYPE 3	12.50	9.40	8.75	8.65	20.47	39.75
DI202	34"x24"	A	TYPE 3	11.89			9.68	0.00	-
DI203	34"x24"	A	TYPE 3	13.50		10.46	10.36	10.36	11.57
CD211	CD			14.85			12.57	0.00	-
DI231	34"x24"	A	TYPE 3	14.97	12.15	12.15	12.05	22.45	0.00
DI232	34"x24"	A	TYPE 3	14.50			12.30	-	22.87
DI233	34"x24"	A	TYPE 3	14.61			12.50	-	0.00
DI241	34"x24"	A	TYPE 3	14.36		9.86	9.76	0.00	23.27
DI242	34"x24"	A	TYPE 3	14.70		10.94	10.84	23.68	0.00
DI243	34"x24"	A	TYPE 3	14.61			12.61	-	0.00
DI251	34"x24"	A	TYPE 3	12.52		7.83	7.73	0.00	17.95
DI252	34"x24"	A	TYPE 3	13.16	9.15	8.57	8.47	0.00	10.88
CD253	CD			14.87			12.60	0.00	-
DI254	34"x24"	A	TYPE 3	12.00		9.54	9.44	7.88	2.47
DI255	34"x24"	A	TYPE 3	12.29		9.92	9.82	15.00	0.00
DI256	34"x24"	A	TYPE 3	12.71			10.35	0.00	-
DI261	48"x30"	A	TYPE 3	12.03		7.28	7.18	34.14	-
DI262	34"x24"	A	TYPE 3	13.11	8.96	8.06	7.96	0.00	8.85
DI263	34"x24"	A	TYPE 1	11.86			9.50	40.00	-
DI264	34"x24"	A	TYPE 3	13.98		9.32	9.22	0.00	-
DI265	34"x24"	A	TYPE 3	13.59		10.16	10.06	12.45	-
DI271	34"x24"	A	TYPE 3	14.15	11.05	11.05	10.95	8.14	0.00
DI272	34"x24"	A	TYPE 3	13.59		11.28	11.23	0.00	0.00
DI273	34"x24"	A	TYPE 3	13.47			11.45	0.00	-
DI274	34"x24"	A	TYPE 3	14.15		11.21	11.11	0.00	0.00

CD-- BOX TYPE DESIGNATION IS CONNECTION TO THE CHANNEL DRAIN SYSTEM USING THE MANUFACTURER'S "CATCH BASIN". SEE LANDSCAPE PLANS AND SPECIFICATIONS FOR THE CHANNEL DRAIN SYSTEM.

STORM DRAINAGE PIPE SCHEDULE									
Description								Invert Elevation	
Pipe #	From	To	Size	Type	Length	Class	Slope (%)	In	Out
P101	DI101	FE100	12	HDPE	27	*	0.48	6.13	6.00
P103	DI103	FE102	12	HDPE	23	*	0.57	7.23	7.10
P111	DI111	FE110	18	HDPE	33	*	2.58	5.85	5.00
P112	DI112	DI111	15	HDPE	58	*	1.55	7.00	6.10
P113	DI113	DI111	18	HDPE	26	*	0.50	6.08	5.95
P114	DI114	DI113	18	HDPE	72	*	0.50	6.54	6.18
P115	DI115	DI114	18	HDPE	64	*	0.50	6.96	6.64
P116	DI116	DI115	18	HDPE	30	*	0.47	7.20	7.06
P117	DI117	DI116	15	HDPE	37	*	1.03	7.83	7.45
P118	DI118	DI116	18	HDPE	113	*	0.42	7.78	7.30
P119	DI119	DI118	18	HDPE	93	*	0.51	8.35	7.88
P120	DI120	DI119	15	HDPE	56	*	1.79	9.45	8.45
P121	DI121	DI119	15	HDPE	161	*	0.25	8.86	8.45
P122	DI122	DI121	15	RCP	69	Type V	0.49	9.30	8.96
P123	DI123	DI121	15	HDPE	120	*	0.65	9.74	8.96
P124	DI124	DI123	15	RCP	37	Type V	3.14	11.00	9.84
P125	DI125	DI122	15	RCP	37	Type III	0.68	9.65	9.40
P126	DI126	DI124	15	RCP	36	Type IV	0.56	11.30	11.10
P131	DI131	FE130	15	HDPE	33	*	6.61	7.18	5.00
P132	DI132	DI131	15	HDPE	26	*	0.81	7.49	7.28
P133	DI133	DI132	15	HDPE	72	*	0.69	8.09	7.59
P134	DI134	DI133	15	HDPE	64	*	0.59	8.57	8.19
P135	DI135	DI134	15	HDPE	8	*	0.50	8.71	8.67
P136	DI136	DI135	15	HDPE	37	*	0.51	9.00	8.81
P141	DI141	DI151	12	HDPE	73	*	0.49	7.82	7.46
P142	DI142	DI141	12	HDPE	26	*	0.30	8.00	7.92
P151	DI151	FE150	12	HDPE	63	*	1.37	7.36	6.50
P152	DI152	DI151	12	HDPE	64	*	1.00	8.10	7.46
P153	DI153	DI152	12	HDPE	30	*	1.00	8.50	8.20
P161	FE161	FE160	24	HDPE	63	*	0.79	7.00	6.50
P171	DI171	FE170	24	HDPE	88	*	0.27	7.24	7.00
P172	DI172	DI171	24	HDPE	51	*	0.71	7.70	7.34
P173	DI173	DI172	12	HDPE	24	*	2.00	9.18	8.70
P174	DI174	DI172	24	HDPE	173	*	0.25	8.23	7.80
P175	DI175	DI174	12	HDPE	24	*	2.00	9.71	9.23
P176	DI176	DI174	24	HDPE	144	*	0.25	8.69	8.33
P177	DI177	DI176	12	HDPE	24	*	2.00	10.17	9.69
P178	DI178	DI176	24	HDPE	89	*	0.26	9.02	8.79
P179	DI179	DI178	12	HDPE	24	*	2.00	10.50	10.02
P180	OF180	DI178	24	HDPE	34	*	0.24	9.20	9.12
P191	DI191	DI193	12	HDPE	94	*	0.50	10.12	9.65
P193	DI193	FE192	15	HDPE	20	*	0.50	9.40	9.30
P195	DI195	FE194	12	RCP	33	Type III	1.00	9.63	9.30
P201	DI201	FE200	24	HDPE	96	*	2.76	8.65	6.00
P202	DI202	DI201	15	HDPE	47	*	0.60	9.68	9.40
P203	DI203	DI201	24	HDPE	240	*	0.67	10.36	8.75
P204	FE204	DI203	24	HDPE	108	*	0.50	11.00	10.46
P211	CD211	FE210	8	HDPE	36	*	4.36	12.57	11.00
P221	OF221	FE220	15	HDPE	56	*	2.68	12.50	11.00
P231	DI231	FE230	12	HDPE	50	*	0.40	12.05	11.85
P232	DI232	DI231	12	HDPE	75	*	0.20	12.30	12.15
P233	DI233	DI231	12	HDPE	175	*	0.20	12.50	12.15
P241	DI241	DI09	12	HDPE	37	*	2.89	9.76	8.69
P242	DI242	DI241	12	HDPE	97	*	1.01	10.84	9.86
P243	DI243	DI242	12	HDPE	167	*	1.00	12.61	10.94
P251	DI251	FE250	15	HDPE	56	*	3.09	7.73	6.00
P252	DI252	DI251	15	HDPE	64	*	1.00	8.47	7.83
P253	CD253	DI252	8	HDPE	40	*	8.63	12.60	9.15
P254	DI254	DI252	15	HDPE	123	*	0.71	9.44	8.57
P255	DI255	DI254	12	HDPE	57	*	0.50	9.82	9.54
P256	DI256	DI255	12	HDPE	71	*	0.60	10.35	9.92
P261	DI261	FE260	24	HDPE	93	*	1.27	7.18	6.00
P262	DI262	DI261	24	HDPE	69	*	0.99	7.96	7.28
P263	DI263	DI262	12	HDPE	29	*	1.86	9.50	8.96
P264	DI264	DI262	24	HDPE	231	*	0.50	9.22	8.06
P265	DI265	DI264	24	HDPE	150	*	0.49	10.06	9.32
P266	OF266	DI265	24	HDPE	68	*	0.50	10.50	10.16
P271	DI271	FE270	24	HDPE	150	*	0.10	10.95	10.80
P272	DI272	DI271	15	HDPE	52	*	0.35	11.23	11.05
P273	DI273	DI272	12	RCP	84	Type IV	0.20	11.45	11.28
P274	DI274	DI271	24	HDPE	59	*	0.10	11.11	11.05
P275	OF275	DI274	24	HDPE	286	*	0.10	11.50	11.21
P301	FE301	FE300	12	RCP	33	Type III	1.00	11.33	11.00
P303	FE303	FE302	12	RCP	33	Type III	1.00	11.33	11.00
P305	FE305	FE304	12	RCP	36	Type III	1.00	11.36	11.00
P307	FE307	FE306	12	RCP	36	Type III	1.00	11.36	11.00
P501	OF501	FE500	12	HDPE	52	*	1.92	4.50	3.50
P511	OF511	FE510	12	HDPE	63	*	1.51	5.95	5.00

P:\ABHA\3153A002 Lewes Middle School\Design\3153A002 LMS Stormwater Profiles.dwg Apr 27, 2023 - 10:22am scal



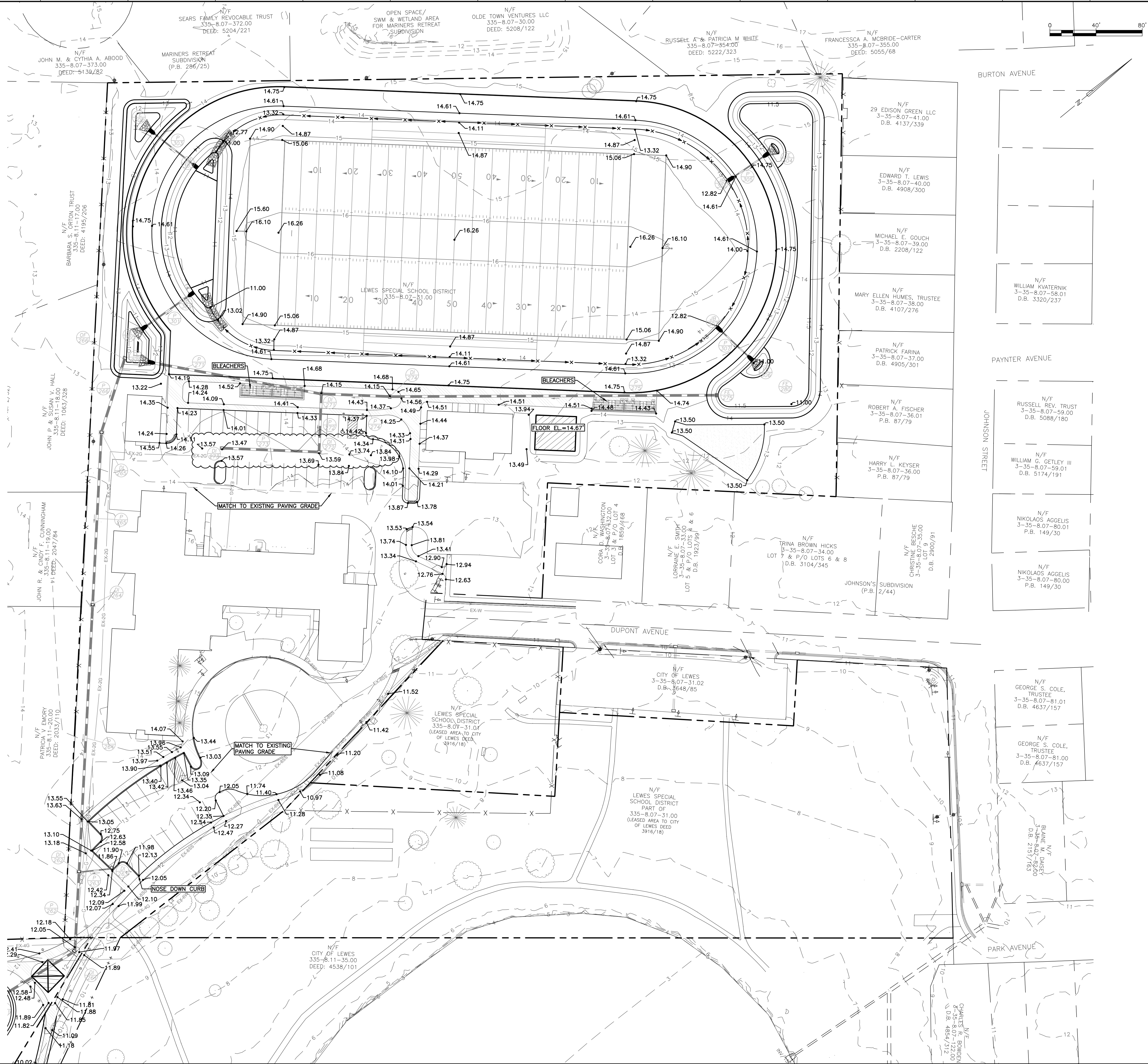
ARCHITECTS ENGINEERS SURVEYORS
DAVIS, BOWEN & FRIEDEL, INC.
SUSSEX COUNTY, DELAWARE
EASTON, MARYLAND
(410) 424-8881
(410) 424-1441
(410) 770-4744

LEWES MIDDLE SCHOOL
CAPE HENLOPEN SCHOOL DISTRICT
CITY OF LEWES, SUSSEX COUNTY, DELAWARE

Revisions:
05/17/22 CONFORMANCE SET
07/05/22 UNREC. COMMENTS
07/20/22 MOVE POLE BUILDINGS
08/11/22 STORM STRUCTURE AND
PIPE CORRECTIONS
02/17/23 SEQUENCE OF
CONSTRUCTION
04/27/23 STORM INLETS & PIPES
272-273, 255-256,
GRADING.

Date: JUNE 4, 2021
Scale: H: 1"=40' V: 1"=4'
Dwn.By: TPS/IMO
Proj.No.: 3153A002.D01
Dwg.No.:

C-413



LEWES MIDDLE SCHOOL
CAPE HENLOPEN SCHOOL DISTRICT
CITY OF LEWES, SUSSEX COUNTY, DELAWARE

Revisions:
05/17/22 CONFORMANCE SET
07/05/22 UNREC. COMMENTS
07/20/22 MOVE POLE BUILDINGS
08/11/22 STORM STRUCTURE AND
PIPE CORRECTIONS
02/17/23 SEQUENCE OF
CONSTRUCTION
04/27/23 STORM INLETS & PIPES
272-273, 255-256,
GRADING.

Date: **JUNE 4, 2021**
Scale: **1"=40'**
Dwn.By: **TPS/IMO**
Proj.No.: **3153A002.D01**
Dwg.No.:

C-503

DAVIS, BOWEN & FRIEDEL, INC.
ARCHITECTS ENGINEERS SURVEYORS
SUSSEX COUNTY, DELAWARE
(302) 424-2800
(302) 424-1441
(410) 770-4744

GRADING PLAN