

E

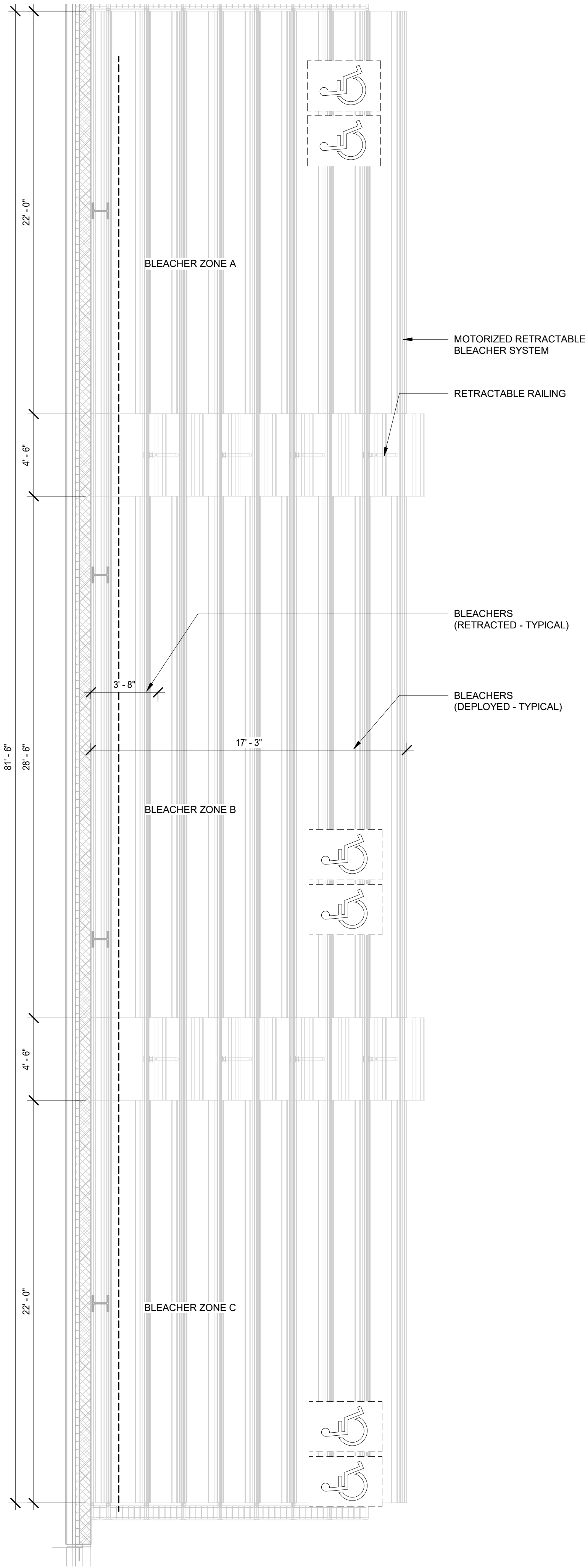
D

C

B

A

BLEACHER SEATING CHART				
ZONE	SEATS	W/ ACCESSIBLE SEATING		
		SEATS	ACCESSIBLE	
A	112	104	2	
B	152	144	2	
C	112	104	2	
TOP ROW	44	44	0	
TOTAL	420	396	6	402



A1 ENLARGED PLAN - GYM BLEACHERS
1/4" = 1'-0"

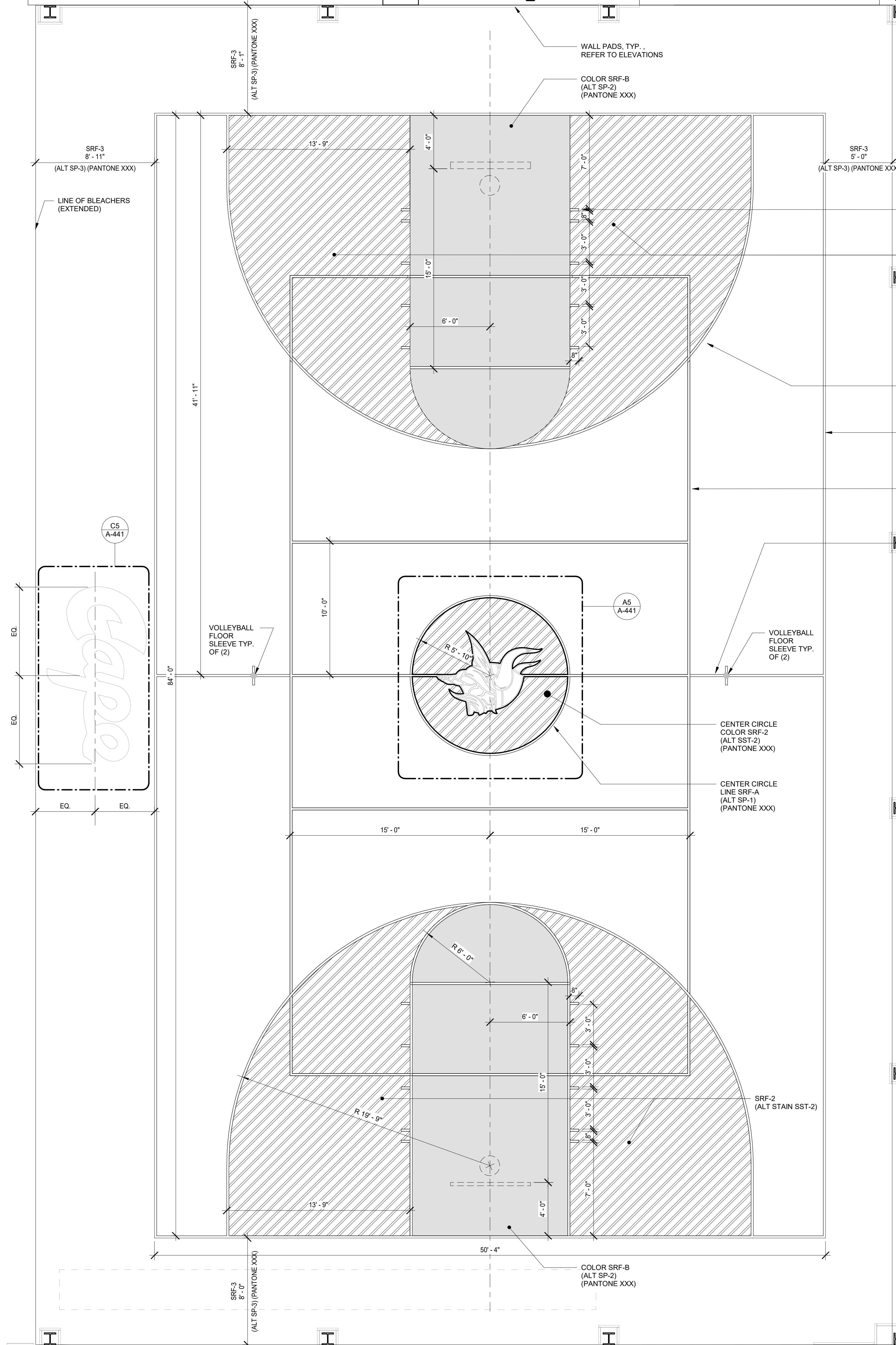
2

2

2

2

2



A3 COURT STRIPING PLAN - GYMNASIUM
1/4" = 1'-0"

NOTE: FLOOR IS SST-1 UNLESS NOTED OTHERWISE.
ALL LINES ARE 2" WIDE UNLESS NOTED OTHERWISE.

4

4

4

4

4

5

5

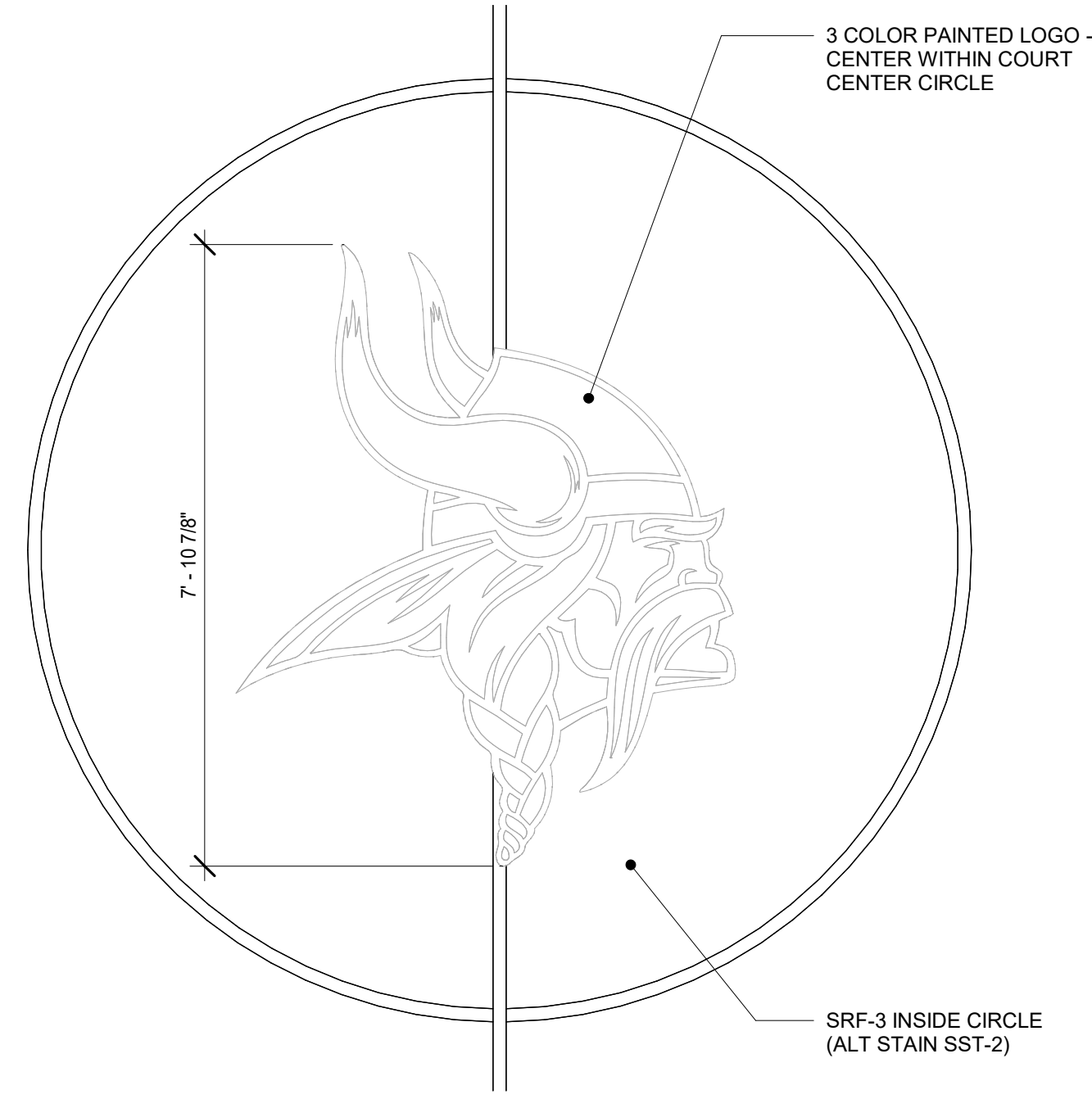
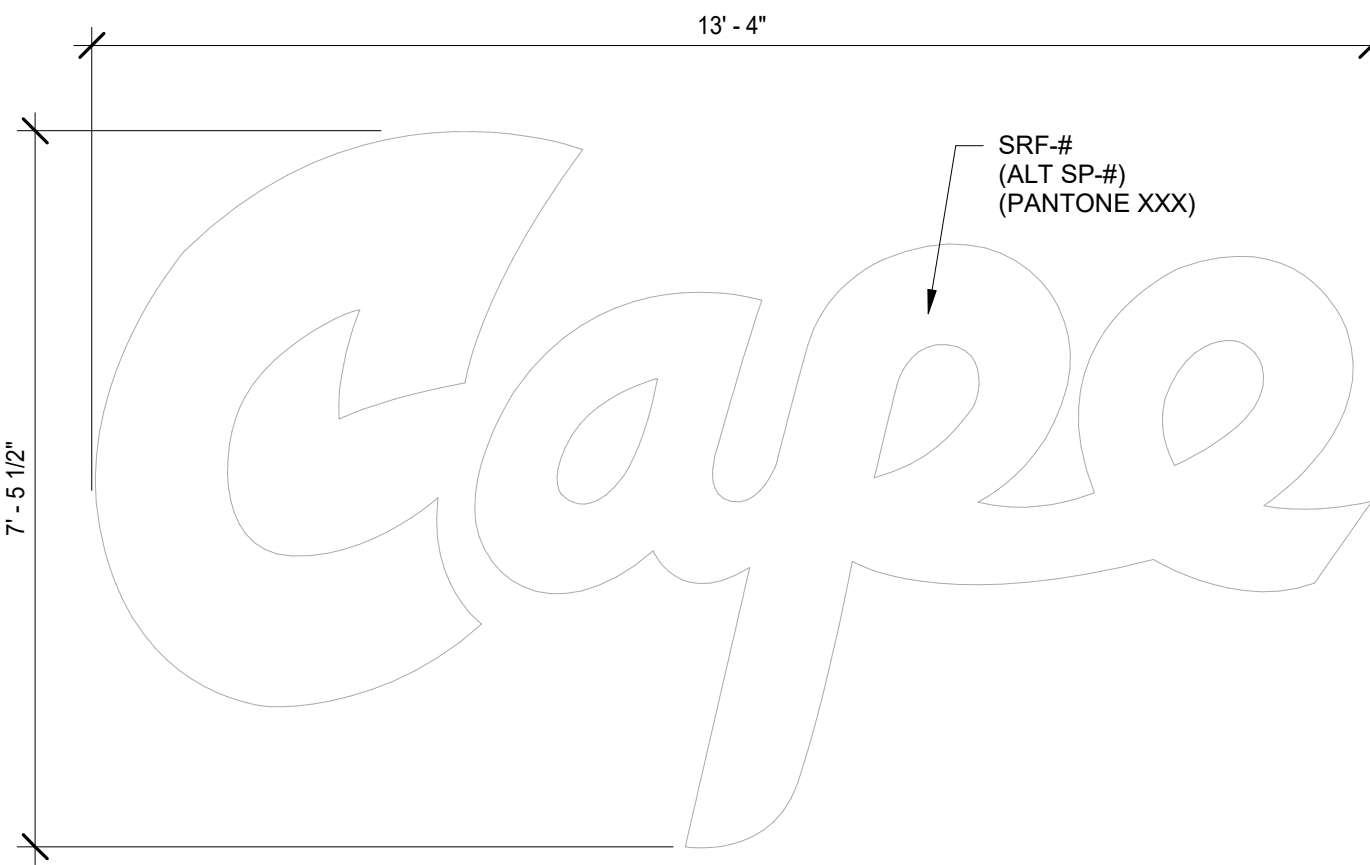
5

5

5

A5 ENLARGED PLAN DETAIL
1/2" = 1'-0"

NOTE: HIGH RESOLUTION ELECTRONIC FILE
WILL BE PROVIDED TO CONTRACTOR



A5 ENLARGED PLAN DETAIL
1/2" = 1'-0"

NOTE: HIGH RESOLUTION ELECTRONIC FILE
WILL BE PROVIDED TO CONTRACTOR



CONSULTANTS
Davis Bowen & Friedel, Inc.
Civil Engineer

Pilotown Engineering
Structural Engineer

Activitas, Inc.
Landscape Architect

GIPE Associates
MEP Engineer

Stages
Theater & Acoustic Consultant

Corsi Associates
Food Service Consultant

CONSTRUCTION DOCUMENTS

PROJECT
NEW MIDDLE SCHOOL

910 SHIELDS AVENUE
LEWES, DE 19958

OWNER
CAPE HENLOPEN
SCHOOL DISTRICT
1270 KINGS HWY
LEWES, DE 19585

KEYPLAN

3	05/17/2022	CONFORMANCE SET
2	03/18/2022	ISSUED FOR BID
1	02/04/2022	DFM FINAL REVIEW

MARK	DATE	DESCRIPTION
PROJECT NUMBER:	2020-14	
FILE NAME:	CHMS_Arch_v2020.rvt	
DRAWN BY:	Author	
CHECKED BY:	Checker	

The professional services of ABHA Architects, Inc. are undertaken for and performed in the interest of Cape Henlopen School District. No contractual obligation is assumed by ABHA Architects, Inc. for the benefit of any other person involved in the project.

These documents are owned by ABHA Architects, Inc. and shall not be used without written permission. Copyright ABHA Architects, Inc. © 2021

SHEET TITLE
COURT STRIPING PLAN – GYM

A-441

E

D

C

B

A