

E

D

C

B

A

1

2

3

4

5

6

GENERAL SHEET NOTES

A. LEGEND



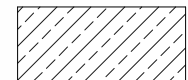
CLEAR INSULATED GLAZING



OBSCURE INSULATED GLAZING



SPANDREL PANEL



BALLISTIC FILM / GLAZING

B. ALL STOREFRONT AND CURTAIN WALL OPENINGS TO BE VERIFIED IN FIELD.
C. REFER TO SPECIFICATIONS FOR GLAZING TYPES, SPANDREL TYPES, AND INSULATED PANEL TYPES.
D. REFER TO EXTERIOR ELEVATIONS FOR STOREFRONT & CURTAIN WALL TYPE COORDINATION.



1621 N. Lincoln Street
Wilmington, DE 19806
(P) 302 . 658 . 6426
(F) 302 . 658 . 8431
abhagen@ABHA.com
www.ABHA.com

CONSULTANTS
Davis Bowen & Friedel, Inc.
Civil Engineer

1 Park Avenue
Mifflord, DE 19965

Pilottown Engineering
Structural Engineer

17585 Nassau Commons Blvd., Unit 3
Lewes, DE 19958

Activitas, Inc.
Landscape Architect

70 Milton Street
Dedham, MA 02026

GIPE Associates
MEP Engineer

8719 Brooks Drive
Easton, MD 21601

Stages
Theater & Acoustic Consultant

732-333-8003

Corsi Associates
Food Service Consultant

1489 Baltimore Pike
Springfield, PA 19064

CONSTRUCTION
DOCUMENTS

PROJECT

NEW MIDDLE SCHOOL

910 SHIELDS AVENUE
LEWES, DE 19958

OWNER

CAPE HENLOPEN
SCHOOL DISTRICT

1270 KINGS HWY
LEWES, DE 19585

KEYPLAN

4	07/14/2023	ASI-034 Vestibule B100BA Storefront
3	05/17/2022	CONFORMANCE SET
2	03/18/2022	ISSUED FOR BID
1	02/04/2022	DFM FINAL REVIEW

MARK DATE DESCRIPTION
PROJECT NUMBER: 2020-14
FILE NAME: CHMS_Arch_v2020.rvt
DRAWN BY: Author
CHECKED BY: Checker

The professional services of ABHA Architects, Inc. are undertaken for and performed in the interest of Cape Henlopen School District. No contractual obligation is assumed by ABHA Architects, Inc. for the benefit of any other person involved in the project.
These documents are owned by ABHA Architects, Inc. and shall not be used without written permission. Copyright ABHA Architects, Inc. © 2021

SHEET TITLE

STOREFRONT & CURTAIN
WALL SCHEDULE
(ALTERNATE)

A-613

E

D

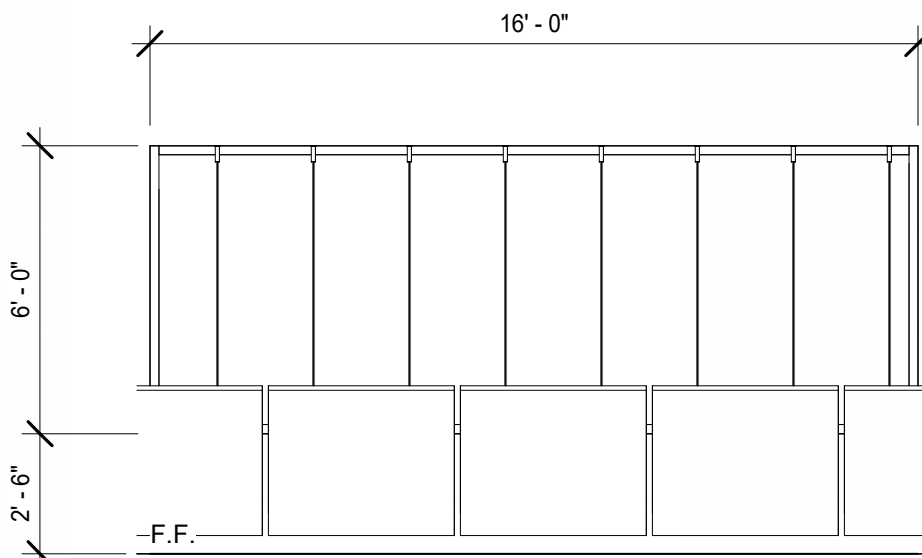
C

B

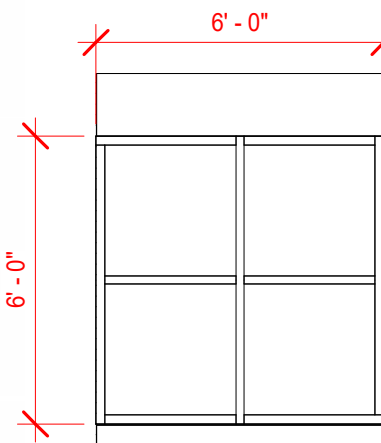
A

ALTERNATE A-1

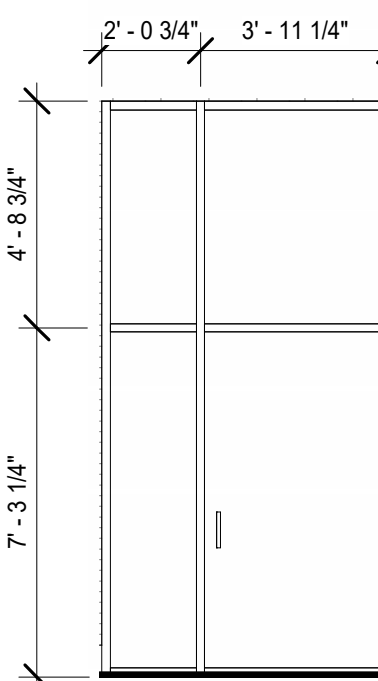
ALTERNATE A-10



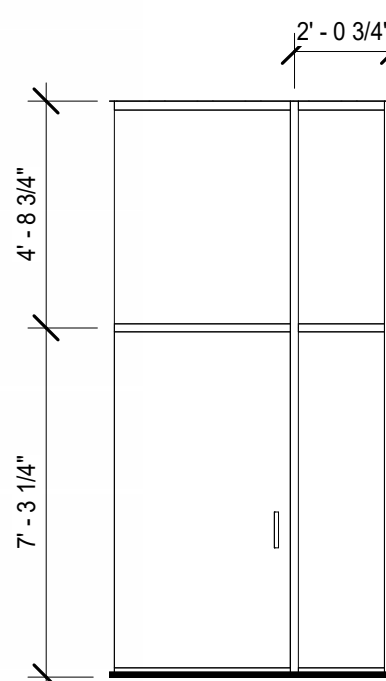
SF-37



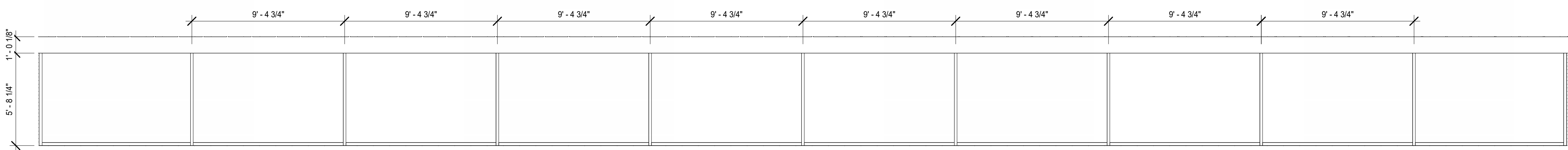
SF-7C



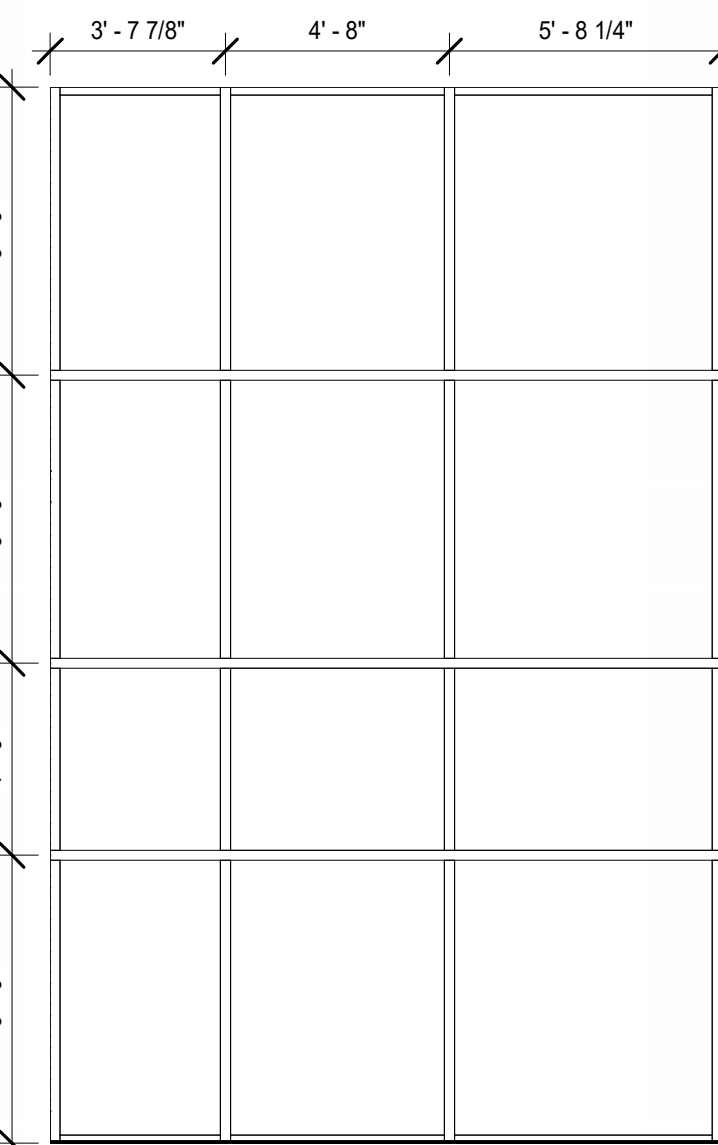
SF-15A



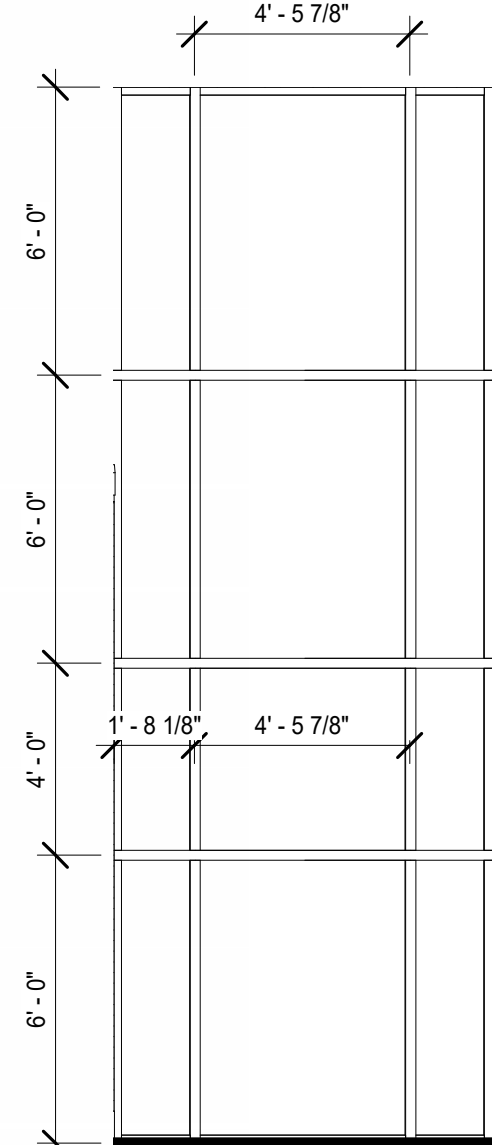
SF-16A



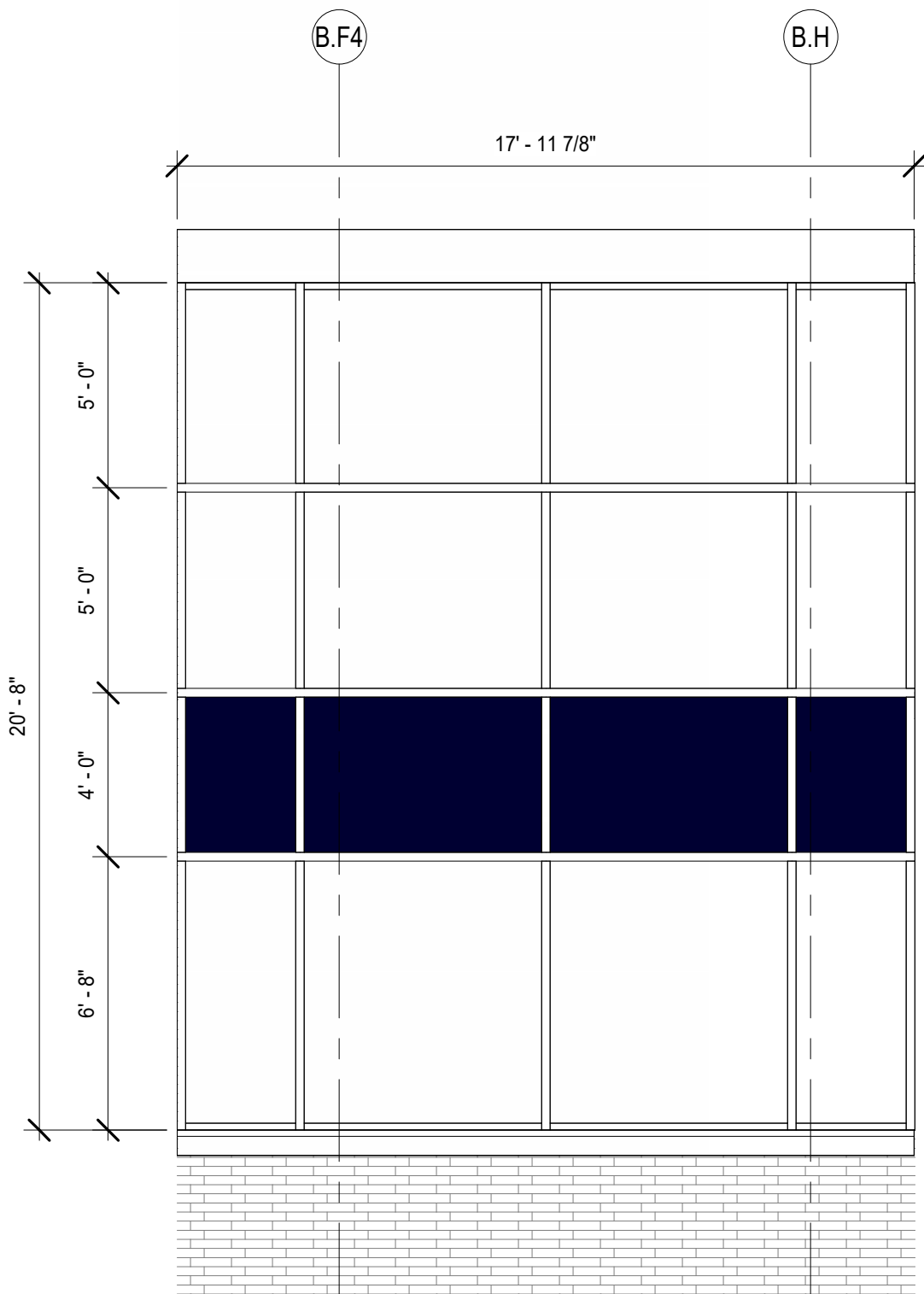
SF-19A



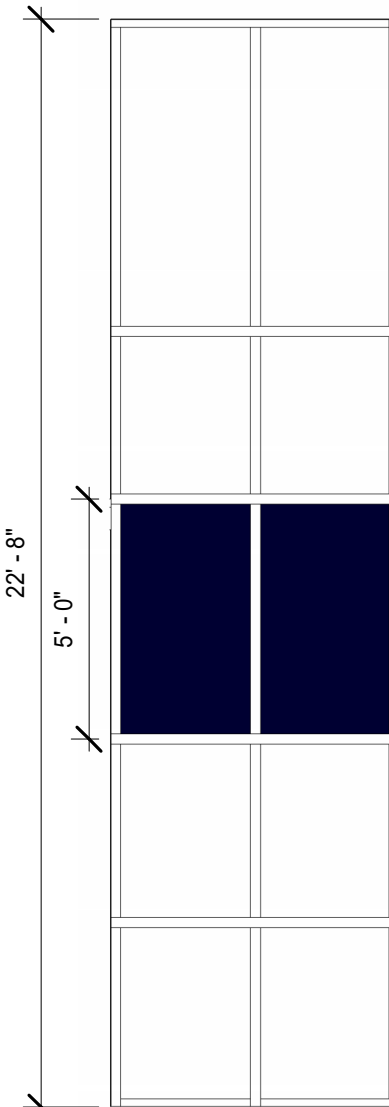
CW-10A



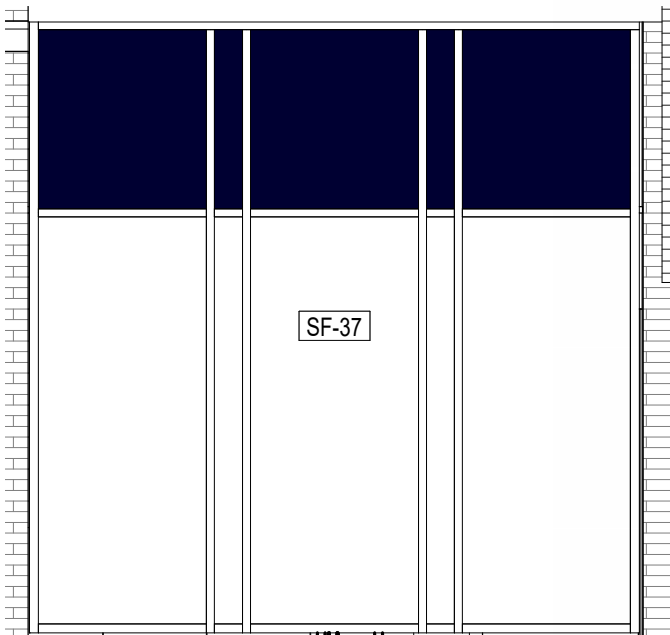
CW-11A



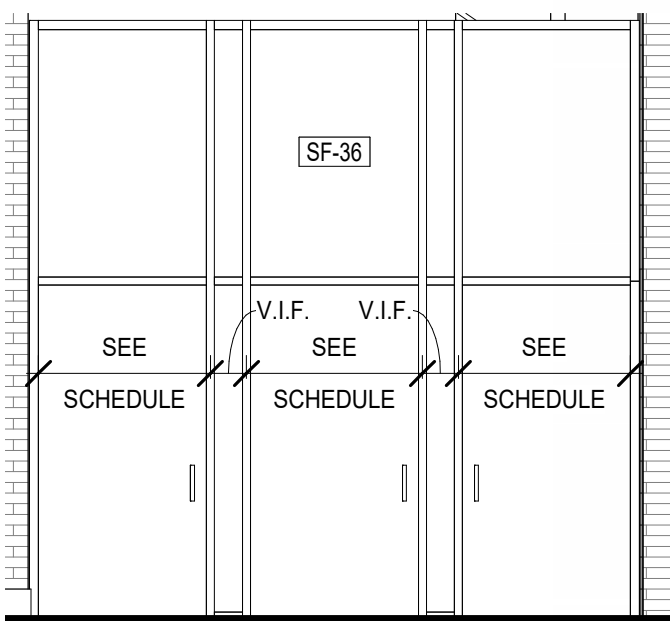
CW-15



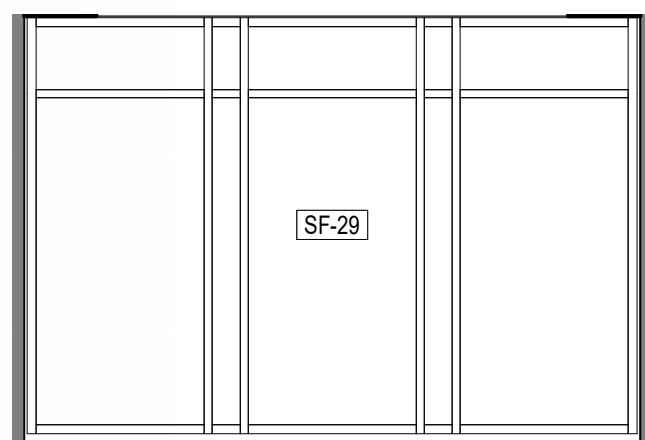
CW-16



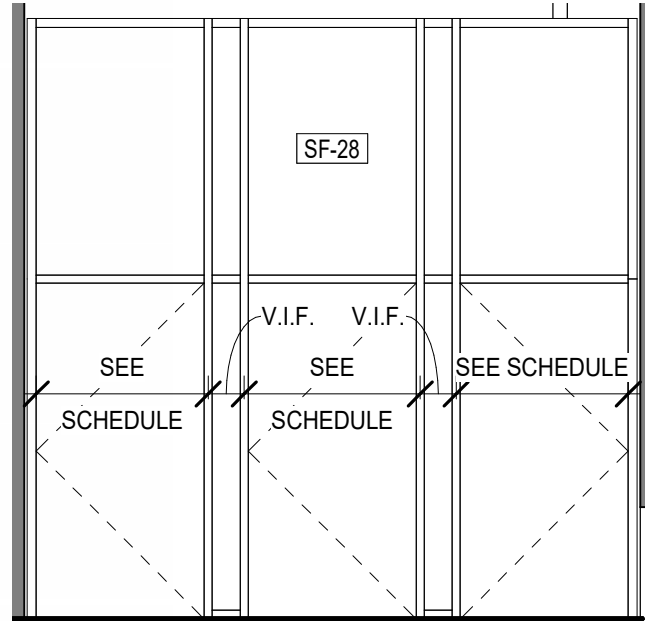
SF-37



SF-36



SF-29



SF-28