

E

D

C

B

A

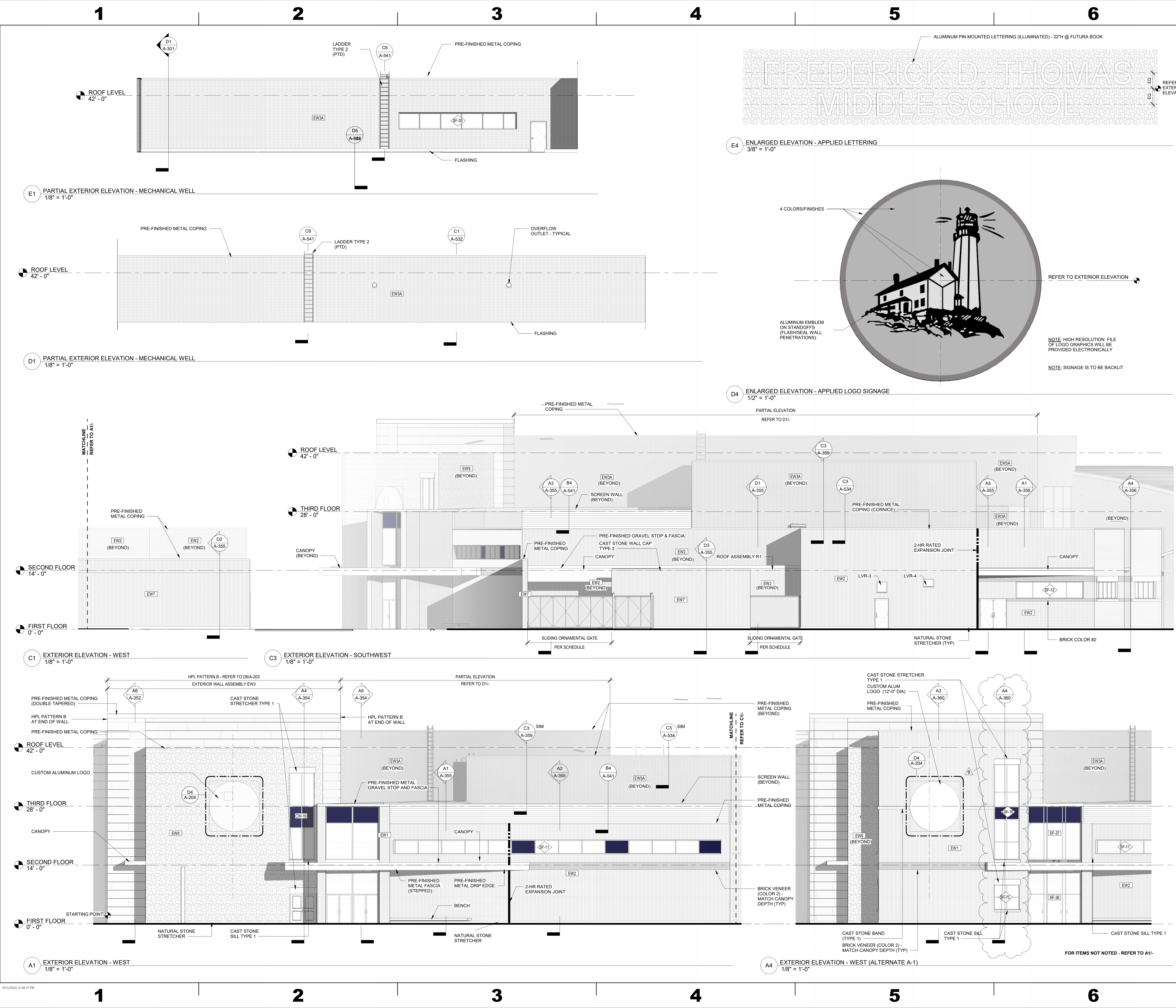
E

D

C

B

A



1621 N. Lincoln Street
Wilmington, DE 19806
(P) 302.658.6426
(F) 302.658.8431
abhagen@ABHA.com
www.ABHA.com

CONSULTANTS
Davis Bowen & Friedel, Inc.
Civil Engineer

Pilottown Engineering
Structural Engineer

Activitas, Inc.
Landscape Architect

GIPE Associates
MEP Engineer

Stages
Theater & Acoustic Consultant

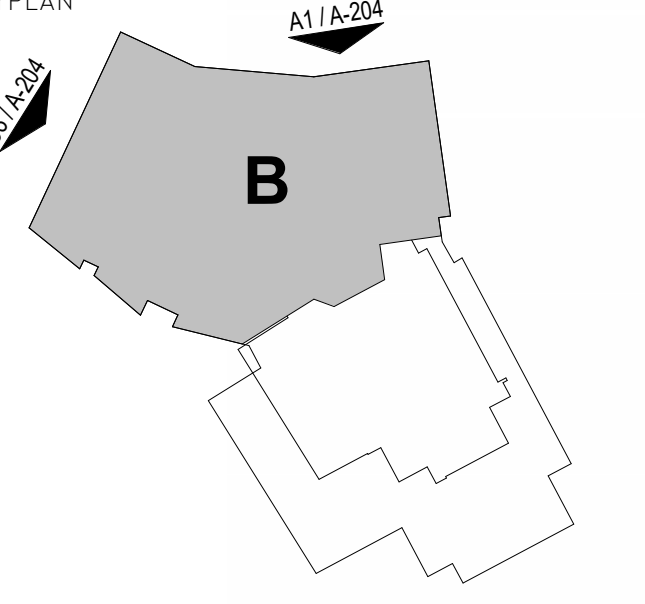
Corsi Associates
Food Service Consultant

CONSTRUCTION DOCUMENTS

PROJECT
NEW MIDDLE SCHOOL

910 SHIELDS AVENUE
LEWES, DE 19958

OWNER
CAPE HENLOPEN
SCHOOL DISTRICT
1270 KINGS HWY
LEWES, DE 19585



MARK	DATE	DESCRIPTION
6	09/08/2023	ASI-039 CW-15 & CW-16
5	08/15/2023	ASI-035 Revised School Name
4	07/14/2023	ASI-034 Vestibule B100BA Storefront
3	05/17/2022	CONFORMANCE SET
2	03/18/2022	ISSUED FOR BID
1	02/04/2022	DFM FINAL REVIEW

PROJECT NUMBER: 2020-14
FILE NAME: CHMS_Arch_v2020.rvt
DRAWN BY: LR
CHECKED BY: BTW

The professional services of ABHA Architects, Inc. are undertaken for and performed in the interest of Cape Henlopen School District. No contractual obligation is assumed by ABHA Architects, Inc. for the benefit of any other person involved in the project.

These documents are owned by ABHA Architects, Inc. and shall not be used without written permission. Copyright ABHA Architects, Inc. © 2021

SHEET TITLE
EXTERIOR ELEVATIONS

A-204