



Richard Y. Johnson & Son, Inc.
General Contractors & Construction Managers
Serving Delaware Since 1946
www.ryjson.com

18404 Johnson Rd
PO Box 105
Lincoln, DE 19960
Phone 302-422-3732
Fax 302-422-4696

**Capital School District
Central Middle School
Interior Renovations
211 Delaware Ave. Dover Delaware 19901
Bid Pac E– Contracts 1 thru 10
October 7, 2024**

Addendum No. 1

Attention all Prospective Bidders:

The following clarifications, changes and /or additions shall by this reference be incorporated into the contract documents as though dully set forth therein.

Addendum No. 1 consists of:
RYJ Written directive (2 pages)
Pre-Bid Meeting Agenda (2 pages)
BMG Written directive (2 pages)
A Drawings (3 Drawings)
E Drawings (4 Drawings)

***Note: Pre-Bid Sign In Sheets will be available in Addendum 2**

Non – Technical Specifications

NOTE: All Prime Contractors are responsible for bidding from a full set of bidding documents.
This project is a State wage rated project.
No administrative items shall be delivered to the job site.
All correspondence with Architect, Engineer, Owner, Etc. must go through this office.

Application for Payment

All bills are due the 25th of the month. Bills must be on for AIA G702/CMa. Billing will not be processed early, late bills will be rejected.

A total of five copies of each bill and corresponding waiver (one notarized original and 4 copies) are required. Faxed copies will not be accepted.

General Conditions

Please refer to Section 9.3.2; any stored material (including on-site storage) being billed during a pay period must be insured and a certificate of stored material be included with your application for payment. Your payment will not be processed and your bill will be rejected for that period.

Stored materials must stay in the stored materials column, and must be insured, until the material has been incorporated into the building.

Shop Drawings, Product Data and Samples

Submittals are to be submitted via email for review and approval, if certain items are deemed not emailable then ten (10) copies of all submittals are required. Inadequate amounts will be rejected.

End of Addendum No. 1



PRE-BID MEETING

October 3, 2024

2:00 pm

**Central Middle School Interior Renovations
 Project No. 2021101.00**

Bid Pac E Agenda

1. Attendees at Pre-Bid Meeting
 Owner-Capital School District – James Baustert
 Construction Manager – Richard Y. Johnson & Son, Inc.
 Architect – Becker Morgan Group

2. Review projects' description and time frame
 - You will be bidding Bid Pac D -

- E-1 Site Work
- E-2 Concrete & Masonry Work
- E-3 Carpentry & General Work
- E-4 Aluminum Storefront/Windows/Glass & Glazing
- E-5 Drywall/Metal Stud/Acoustical Work
- E-6 Floor Covering Work
- E-7 Caulking/Painting
- E-8 Mechanical
- E-9 Sprinkler System
- E-10 Electrical

- Project involves the interior renovations of the existing Central Middle School.

3. Review Bid date and location
 - October 24, 2024 @ 2:00pm
 - Central Middle School located at 211 Delaware Ave. Dover Delaware 19901 in the auditorium.
 All **mailed bids** must be received by **12:00pm** the day of the bid opening, October 24, 2024 at the Capital School District Office located at 198 Commerce Way, Dover Delaware 19904.
 Bidder bears the risk of late delivery.
 - Bids will be publicly opened and read aloud at the Central Middle School Auditorium,

4. Review the bidding procedures and bonding requirements
 - You are bidding a full set of documents.
 - You must use bid form provided in bid documents and/or as revised in Addendums
 - Review scope of work, section 011100 Summary of Work
 - No exclusions from your scope of work or bid will be rejected!!
 - 10% Bid Bond is required.
 - Public bid opening.
 - This is a **NON-MANDATORY** pre-bid meeting.

5. Review the Project

- Owner to provide building permits; contractor provides all other permits, licenses and inspection fees
 - Seven (7) Alternates
 - Four (4) Allowances
 - Contract 2 Concrete & Masonry Work \$25,000 – Unforeseen Conditions
 - Contract 3 Carpentry & General Work \$100,000 – Unforeseen Conditions
 - Contract 8 Mechanical \$25,000 – Unforeseen Conditions
 - Contract 10 Electrical \$25,000 – Unforeseen Conditions
 - Zero (0) Unit Prices
6. Receive Bidding questions – R. F. I. to be forwarded to Construction Manager. Email address is jdixon@ryjson.com.
- RFI's to be in written form only, with plan number or specification number noted with question.
 - No RFI's shall be accepted after 12 noon on Thursday, October 17th, 2024.
 - All substitutions shall be submitted no later than 12 noon on Thursday, October 17th, 2024.
- State prevailing wage rates apply.
7. Bidding documents
- www.ryjson.com under plan room
 - Additional contract Documents and partial sets can be purchased at RCI Printing & Graphics, 298 Churchmans Road, New Castle Delaware, (302) 328-5019
 - Documents Shown on My Market Place State of Delaware website are **NOT** for Bidding.
- For Bidding, you must use the documents from the RYJ website.**
8. Drug Testing/Craft Training Requirements
- All Prime Contractors are to include a signed affidavit that is included in the project documents.
9. Review Subcontractor List Requirements
10. **Site Visit: View after Pre-Bid Meeting**
11. Receive questions
12. Summation and Conclusion



ARCHITECTURE
ENGINEERING

ADDENDUM 1

OWNER	X Capital School District
ARCHITECT	X Becker Morgan Group, Inc.
CONSULTANTS	X Pilottown Engineering, CMTA Inc.
CONTRACTOR	X Richard Y. Johnson and Son, Inc.
FIELD	<input type="checkbox"/>
OTHER	<input type="checkbox"/>

DATE: 10/07/2024
PROJECT: Central Middle to Elementary School Interior Renovation
PROJECT NO: 2021101.00

You are hereby directed to execute promptly this Field Memo that interprets the Contract Documents or orders minor changes in the Work without change in Contract Sum or Contract Time.

If you consider that a change in Contract Sum or Contract Time is required, please submit your itemized proposal to the Architect immediately and before proceeding with this Work. If your proposal is found to be satisfactory and in proper order, this Field Memo will in that event be superseded by a Change Order.

Description:

1. General Addendum Notes:
 - a. All countertops are to be solid surface.
 - b. All casework is plastic laminate casework with a maximum of 3 total plastic laminate types.
2. A101D-E – FIRST FLOOR PLAN – AREA D/E
 - a. Detail 1:
 - i. **ADD** exam curtains (3) in nurse’s suite.
3. A106-E - FIRST FLOOR FINISH PLAN - AREAS B, D/E (BASE BID)
 - a. General Symbol Legend:
 - i. **DELETE** graphic pattern for RUB-1.
 - b. Material Finish Legend:
 - i. **ADD** SS-1 information.
 - ii. **REVISE** SVT-1 and SVT-2 description to “Sheet Vinyl Tile”.
4. A602-E - INTERIOR FLOORING TRANSITION DETAILS
 - a. **DELETE** details S6 and S9.
 - b. Details S8 and S14:
 - i. **REVISE** drawing title and drawing note from “Athletic” to “Sheet”.
5. ED-101B – FIRST FLOOR ELECTRICAL DEMOLITION PLAN – AREA B
 - a. **ADD** demolished lights in corridor B151.
6. E-201B – FIRST FLOOR ELECTRICAL LIGHTING PLAN – AREA B
 - a. **ADD** two (2) A6 light fixtures and one (1) A6(EM) light fixture in corridor B1.
 - b. **ADD** occupancy sensor in corridor B1.
 - c. **ADD** general note O.
7. E-201D/E – FIRST FLOOR ELECTRICAL LIGHTING PLAN – AREA D/E
 - a. **REVISE** lights in grid in Office D112A.
8. E-501 – ELECTRICAL DETAILS

a. **ADD** lighting fixtures A6 and A6(EM) to lighting fixture schedule.

Attachments:

Becker Morgan Group, Inc. drawings: A101D-E, A106-E, and A602-E dated 09.13.2024

CMTA, Inc. Drawings: ED-101B, E-201B, E-201D/E, and E-501 dated 09.13.2024

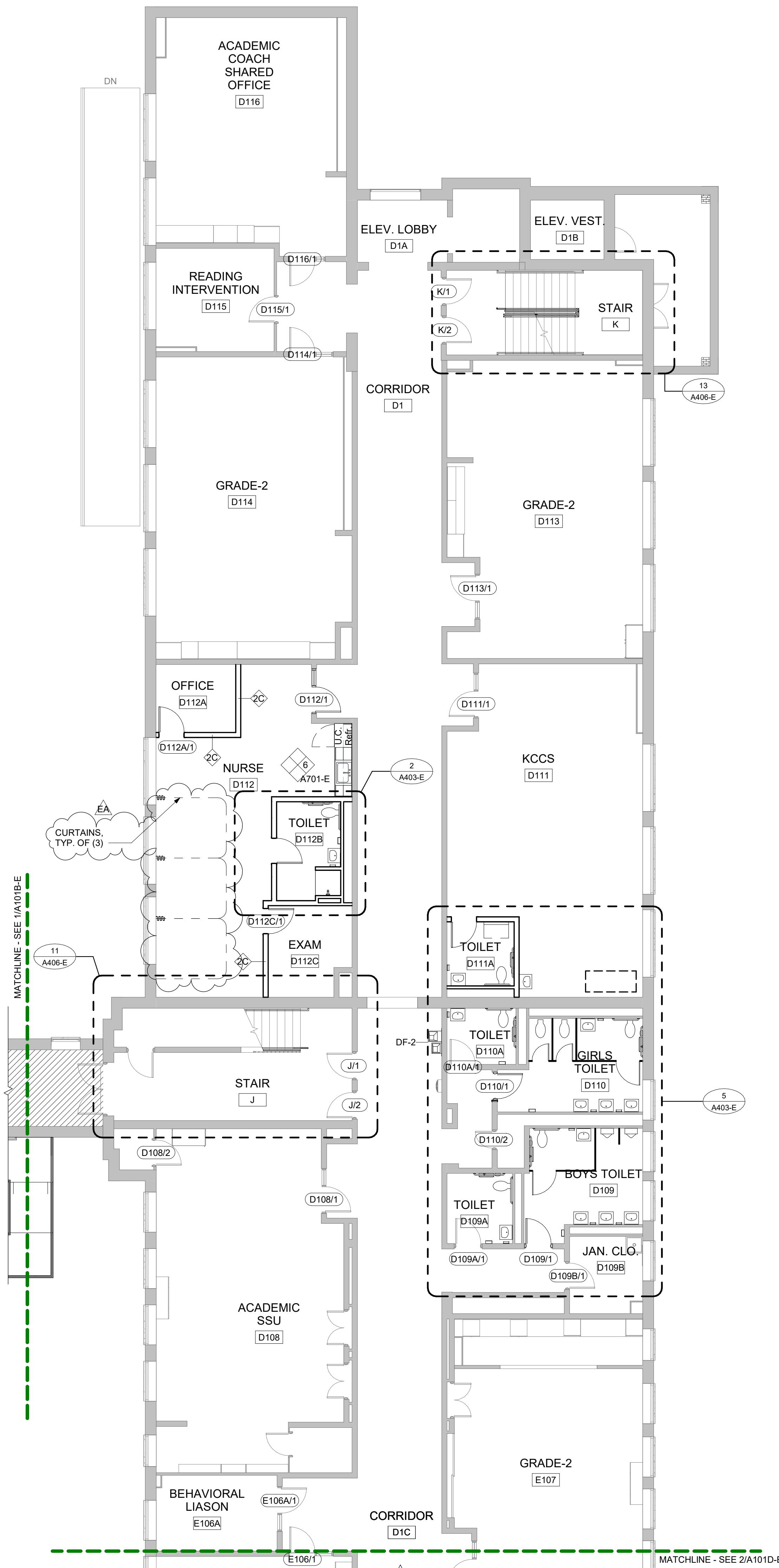
ARCHITECT: Becker Morgan Group, Inc.

BY: Brad Hastings, AIA

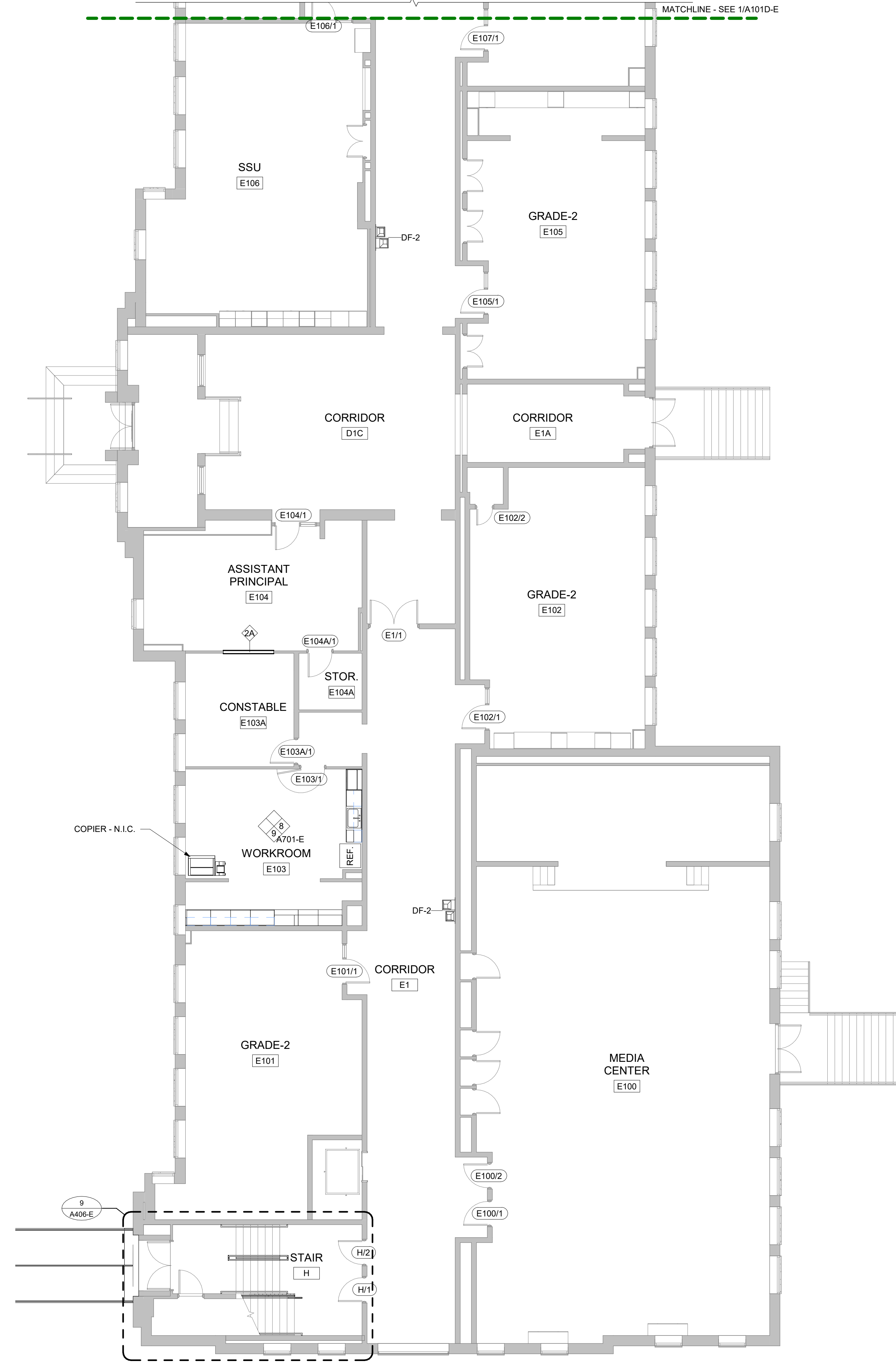
GENERAL NOTES

- DIMENSIONS ARE TO EXTERIOR FACE OF CONCRETE, MASONRY, OR METAL STUD UNLESS OTHERWISE NOTED.
- REFER TO A400-SERIES DRAWINGS FOR SLAB AND OTHER CONSTRUCTION TYPES AND TYPICAL DETAILS.
- SEE A400-SERIES FOR ENLARGED PLANS AND SECTIONS.
- SEE A601-E FOR DOOR SCHEDULE, DOOR TYPES AND HOLLOW METAL CURTAINWALL, AND STOREFRONT TYPES.
- COORDINATE REQUIREMENTS OF WORK WITH ALL OTHER TRADES.

■ N.I.C. (NOT IN CONTRACT)



1 FIRST FLOOR PLAN - AREA D/E NORTH
 SCALE: 1/8" = 1'-0"

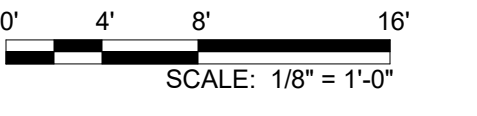
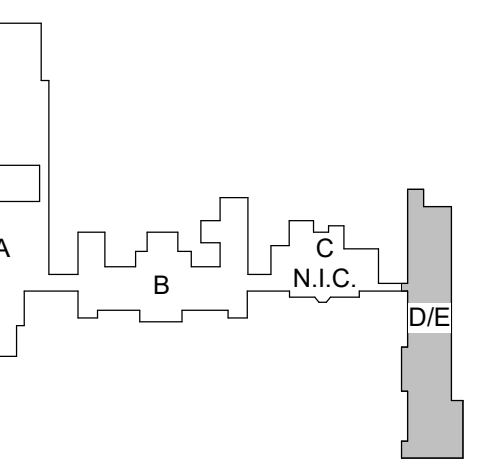


2 FIRST FLOOR PLAN - AREA D/E SOUTH
 SCALE: 1/8" = 1'-0"

PROJECT TITLE
CENTRAL MIDDLE TO ELEMENTARY SCHOOL INTERIOR RENOVATION
 211 DELAWARE AVE
 DOVER, DE 19901

ISSUED FOR BIDDING
 ISSUED: 09/13/2024

SHEET TITLE
FIRST FLOOR PLAN - AREA D/E



Mark	Date	Description
EA	10.07.2024	ADDENDUM 1

PROJECT NO: 2021101.00
 DATE: 09.13.2024
 SCALE: 1/8" = 1'-0"
 DRAWN BY: CES PROJ MGR: BAH

A101D-E
 COPYRIGHT © 2024

GENERAL FINISH NOTES

- REFER TO A106-E FOR MATERIAL FINISH LEGEND.
- REVIEW ALL FIELD CONDITIONS AND PLANNED WORK. RESOLVE ALL DISCREPANCIES IN A MANNER APPROVED BY THE ARCHITECT THAT COULD AFFECT THE FINISHES OR TRANSITIONS PRIOR TO PROCEEDING WITH WORK AFFECTED BY DISCREPANCIES.
- ALL FINISHES SHALL BE TYPE 1/ CLASS A FLAME AND SMOKE SPREAD. REFER TO FINISH AND MATERIAL SCHEDULES.
- REFER TO ELEVATIONS, REFLECTED CEILING PLANS AND DETAILS FOR ADDITIONAL INFORMATION REGARDING FINISHES, PATTERNS, ORIENTATIONS AND TRANSITIONS.
- PREPARE SURFACES PER FINISH MANUFACTURERS' INSTRUCTIONS PRIOR TO APPLICATIONS OF FINISHES. CONFIRM SURFACES TO RECEIVE FINISHES ARE CLEAN, TRUE AND FREE OF IRREGULARITIES.
- PREPARE SLAB TO RECEIVE NEW FINISHES, INCLUDING STRUCTURALLY BONDED HYDRAULIC CEMENT UNDERLAYS AND FLASH PATCHING REQUIRED TO LEVEL AND SMOOTH FLOOR TO 1/8" IN 20'-0" NON-CUMULATIVE, UNLESS OTHERWISE INDICATED AS FLATTER AND MORE LEVEL. CONCRETE FLOORS SHALL BE FREE FROM SCALING AND IRREGULARITIES AND SHALL EXHIBIT NEUTRALITY RELATIVE TO ACIDITY AND ALKALINITY. REMOVE GREASE, DIRT CURING COMPOUNDS AND OTHER MATERIALS THAT WILL IMPAIR THE PERFORMANCE AND/OR ADHESION OF THE SCHEDULED FLOORING.
- LOCATE FLOOR FINISH TRANSITIONS AT CENTERLINE OF DOOR, UNLESS OTHERWISE NOTED.
- PROVIDE COMPLETE EXTRUDED REVEALS IN ALL REVEAL LOCATIONS. FINISH TO MATCH ADJACENT SURFACE FINISH, UNLESS NOTED OTHERWISE.
- PAIN AND FINISH EXPOSED SURFACES UNLESS OTHERWISE NOTED. PAINT SURFACES BEHIND REMOVABLE EQUIPMENT/FURNITURE. PAINT BEHIND NON-REMOVABLE ITEMS WITH PRIME COAT ONLY.
- LAY RESILIENT FLOORING DIRECTIONAL PATTERNS OR GRAINS AS NOTED, OR IF NOT NOTED AS DIRECTED BY THE ARCHITECT.
- GRILLES, PLATES, DIFFUSERS AND OTHER ITEMS OCCURRING IN WALLS OR CEILING SHALL BE FACTORY FINISHED IN PAINT OF COLOR AND SHEEN TO MATCH SURFACES ON WHICH THEY OCCUR UNLESS OTHERWISE NOTED.
- PRIME ALL MATERIAL PRIOR TO PAINTING.
- SEALANT TO BE APPLIED BETWEEN BASE OF ALL DOOR FRAMES AND TILE FLOORING. SEALANT TO MATCH COLOR OF DOOR FRAMES.
- EXTEND FLOORING INTO ALL TOE KICKS, KNEE SPACES AND EXPOSED AREAS UNDER ANY EXISTING CASEWORK. FLOORING AS SCHEDULED SHALL BE INSTALLED UNDER ALL NEW CASEWORK.
- MOLD- AND MOISTURE-RESISTANT GYPSUM BOARD SHALL BE USED AT ALL KITCHEN AREAS, TOILET ROOMS, AND CUSTOMER SERVICE CLOSETS SCHEDULED TO HAVE GYPSUM BOARD FINISHES. THIS INCLUDES UNDER ALL CASEWORK AND APPLIANCES.
- PLAN WALL TYPES TAKE PRECEDENCE OVER SCHEDULED WALL FINISH. PROVIDE APPROPRIATE WALL FINISH TO CORRESPOND TO WALL TYPES.
- PT-# OR HPC-# IDENTIFIES COLOR AND SHEEN ONLY. REFER TO INTERIOR PAINTING SPECIFICATION TO COORDINATE PAINT PRODUCT WITH SUBSTRATE.
- PROVIDE SEALANT/CAULK AT INTERSECTIONS OF DISSIMILAR MATERIALS AND AS RECOMMENDED BY MANUFACTURERS' GUIDELINES.
- CAFETERIA TO RECEIVE NEW WALL AND DOOR FRAME PAINT ONLY. (NOT SHOWN ON PLANS.)

GENERAL SYMBOL LEGEND

FINISH TAG:
 (XX-1) SEE FINISH LEGEND
 --- ACCENT WALL LOCATION
 --- TRANSITION STRIP BETWEEN MATERIALS - SEE A606

FLOOR FINISH PATTERNS (BASE BID):

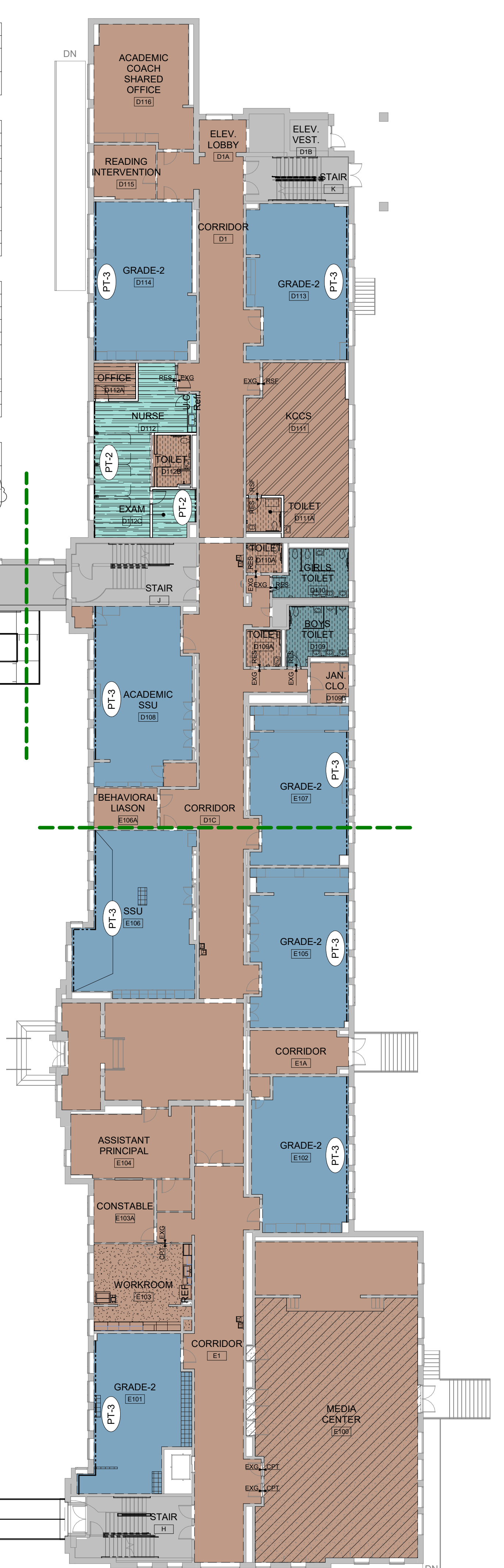
NOTE: HATCH PATTERNS REPRESENT MATERIAL ONLY, NOT INSTALLATION PATTERN.

PAINT LEGEND:

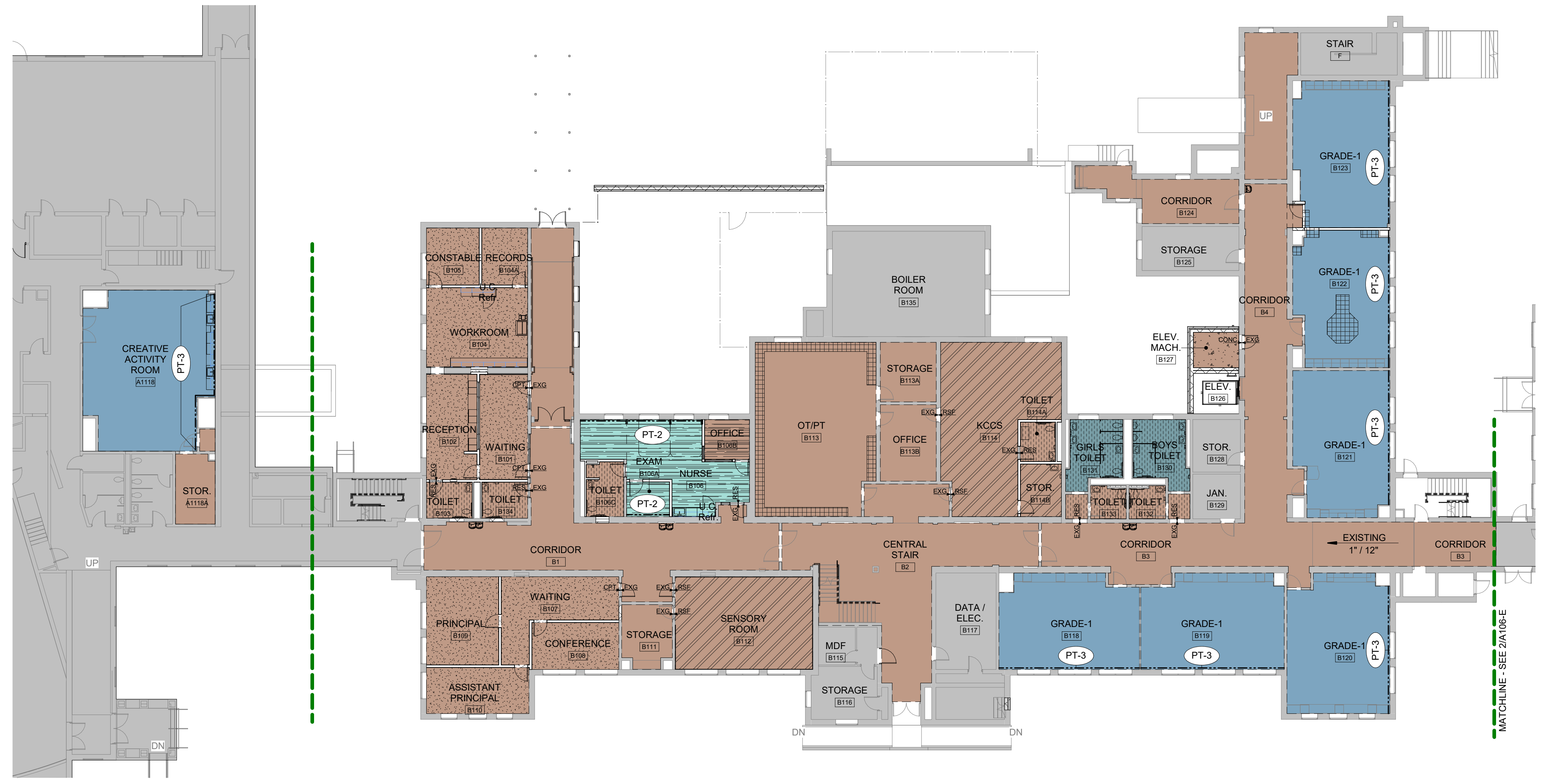
NOTES:
 1. FLOOR PATTERN + SOLID COLOR = FLOORING AND PAINT IN ROOM
 2. SOLID COLOR ONLY = PAINT ONLY

MATERIAL FINISH LEGEND

MARK	DESCRIPTION	MANUFACTURER	PRODUCT	COLOR / FINISH	SIZE	COMMENTS	LOCATION
BASE BID	FLOOR						
-	NO FINISH / NOT APPLICABLE						
CONC-1	CONCRETE WITH SEALER/HARDENER						
CPT-1	CARPET TILE	TARKETT	OFFSET 11338	INK FILM 30807	18"x36"	TYPICAL	
CPT-2	CARPET TILE	TARKETT	SUEDE TONES 11531	GHOST WRITER 57204	18"x36"	TYPICAL	
RES-1	RESINOUS FLOORING	STONHARD	STONEBLEND FE	CRUSHED SLATE	18"x36"	TYPICAL	MEDIA CENTER
RES-2	RESINOUS FLOORING	STONHARD	STONEBLEND HDF	CRUSHED SLATE	18"x36"	TYPICAL	TOILET ROOMS
RSV-1	RUBBER SHEET FLOORING	ECOSURFACES	NADA RX	BLUE ICE 3310	57" ROLL	TYPICAL	SENSORY ROOM & KCCS
VCT	VINYL COMPOSITION TILE	MATCH EXISTING	MATCH EXISTING	MATCH EXISTING			MATCH EXISTING PATTERN AND COLORS WHERE INDICATED ON DRAWINGS
ALTERNATE	FLOOR						
RFT-1	RUBBER FLOORING TILE	NORA RUBBER FLOORING	NORAPLAN ENVIRONCARE	FROM FULL MFRS RANGE			INSTALLED OVER EXISTING VCT
RFT-2	RUBBER FLOORING TILE	NORA RUBBER FLOORING	NORAPLAN ENVIRONCARE	FROM FULL MFRS RANGE			INSTALLED OVER EXISTING VCT
SVT-1	SHEET VINYL TILE	PATCRAFT	ADMIX	FROM FULL MFRS RANGE			INSTALLED OVER EXISTING VCT
SVT-2	SHEET VINYL TILE	PATCRAFT	ADMIX	FROM FULL MFRS RANGE			INSTALLED OVER EXISTING VCT
BASE BID	BASE						
-	NO FINISH / NOT APPLICABLE						
RB-1	RESILIENT WALL BASE	TARKETT	BASEWORKS	NAVY BLUE 18	4"H	TYPICAL	
RES-1	RESINOUS FLOORING INTEGRAL COVE BASE	STONHARD	STONEBLEND FE	CRUSHED SLATE	6"H	TYPICAL	TOILET ROOMS
RES-2	RESINOUS FLOORING INTEGRAL COVE BASE	STONHARD	STONEBLEND HDF	CRUSHED SLATE	6"H	TYPICAL	NURSE SUITE
BASE BID	WALL						
-	NO FINISH / NOT APPLICABLE						
EXG	EXISTING TO REMAIN						
GWB	GYPSUM WALLBOARD						
HPC-1	HIGH PERFORMANCE COATING	SHERWIN WILLIAMS	PROMAR 200 EGG SHELL	SW7570 EGRET WHITE			
PT-1	FIELD PAINT	SHERWIN WILLIAMS	PROMAR 200 EGG SHELL	SW7570 EGRET WHITE			
PT-2	ACCENT PAINT	SHERWIN WILLIAMS	PROMAR 200 EGG SHELL	SW6227 MEDITATIVE			NURSE ACCENT & SHARED TOILET ROOMS
PT-3	ACCENT PAINT	SHERWIN WILLIAMS	PROMAR 200 EGG SHELL	SW6519 HINTING BLUE / EGGSHELL			GRADES 1, 2 & 3
PT-4	ACCENT PAINT	SHERWIN WILLIAMS	PROMAR 200 EGG SHELL	SW7084 PASSIVE			GRADES 4 & 5
PT-5	DOOR FRAME PAINT	SHERWIN WILLIAMS	PROMAR 200 GLOSS	TBD			THROUGHOUT, INCLUDING N.I.C. AREAS
BASE BID	CEILING						
-	NO FINISH / NOT APPLICABLE						
ACT-1	ACOUSTICAL TILE CEILING	ARMSTRONG	ULTIMA	WHITE	24"x24"	TYPICAL	
ACT-2	ACOUSTICAL TILE CEILING	ARMSTRONG	ULTIMA HIGH NRC	WHITE	24"x24"	SCRUBBABLE	
ACT-3	ACOUSTICAL TILE CEILING	ARMSTRONG			24"x48"		
EXG	EXISTING TO REMAIN						
EXPO	EXPOSED STRUCTURE, FIRE PROTECTION, PLUMBING, MECHANICAL, ELECTRICAL, TECHNOLOGY, ETC.		SHERWIN WILLIAMS DRYFALL	SW7570 EGRET WHITE			
GWB	GYPSUM BOARD CEILING						
HPC-3	HIGH PERFORMANCE COATING	SHERWIN WILLIAMS	PROMAR 200 FLAT	SW7570 EGRET WHITE			
PT-6	CEILING PAINT	SHERWIN WILLIAMS	PROMAR 200 FLAT	SW7570 EGRET WHITE			
BASE BID	MILLWORK, CASEWORK, DOORS, MISC. FINISHES						
PLAM-1	PLASTIC LAMINATE	WILSONART	HPL	MONTICELLO MAPLE 7925-38			CASEWORK
SCWD	SOLID CORE WOOD DOOR W/ PREFINISH VENEER	MASONITE ARCHITECTURAL	ASPIRO SERIES	WHITE OAK - CLEAR			PLAIN SLICED
SS-1	SOLID SURFACING	WILSONART		GREY BEOLA 9218CM			COUNTERTOPS



2 FIRST FLOOR FINISH PLAN - AREA D/E BASE BID
 SCALE: 1/16" = 1'-0"



1 FIRST FLOOR FINISH PLAN - AREA B BASE BID
 SCALE: 1/16" = 1'-0"

BECKER MORGAN GROUP

ARCHITECTURE ENGINEERING

Delaware
 309 S Governors Ave
 Dover, DE 19904
 302.734.7950

The Tower at STAR Campus
 100 Discovery Boulevard, Suite 102
 Newark, DE 19713
 302.369.7700

Maryland
 312 West Main St, Suite 300
 Salisbury, MD 21801
 410.546.9100

North Carolina
 3333 Jackie Drive, Suite 120
 Wilmington, NC 28403
 910.341.7500

www.beckermorgan.com

CMTA, INC.

FIRE PROTECTION, PLUMBING, MECHANICAL, AND ELECTRICAL ENGINEER
 200 WESTGATE CIRCLE, SUITE 404
 ANNAPOLIS, MD 21401
 410-921-3510

PILOTTOWN ENGINEERING

STRUCTURAL ENGINEER
 17585 NASSAU BOULEVARD, UNIT 3
 LEWES, DE 19958
 302-703-1770

RICHARD Y. JOHNSON & SON, INC.

CONSTRUCTION MANAGER
 18404 JOHNSON AVENUE
 LINCOLN, DELAWARE 19960
 302-422-3732 fax 302-422-4696

PROJECT TITLE

CENTRAL MIDDLE TO ELEMENTARY SCHOOL INTERIOR RENOVATION

211 DELAWARE AVE
 DOVER, DE 19901

ISSUED FOR BIDDING

ISSUED: 09/13/2024

SHEET TITLE

FIRST FLOOR FINISH PLAN - AREAS B, D/E (BASE BID)

0' 8' 16' 32'
 SCALE: 1/16" = 1'-0"

ISSUE BLOCK

Mark	Date	Description
EA	10.07.2024	ADDENDUM 1

PROJECT NO: 2021101.00
 DATE: 09.13.2024
 SCALE: As Indicated
 DRAWN BY: MNS PROJ MGR: BAH

A106-E
 COPYRIGHT © 2024

Autodesk Docs/Central Middle School Renovations/2021101/001

PROJECT TITLE

CENTRAL MIDDLE TO ELEMENTARY SCHOOL INTERIOR RENOVATION

211 DELAWARE AVE
DOVER, DE 19901

ISSUED FOR BIDDING
ISSUED: 09/13/2024

SHEET TITLE

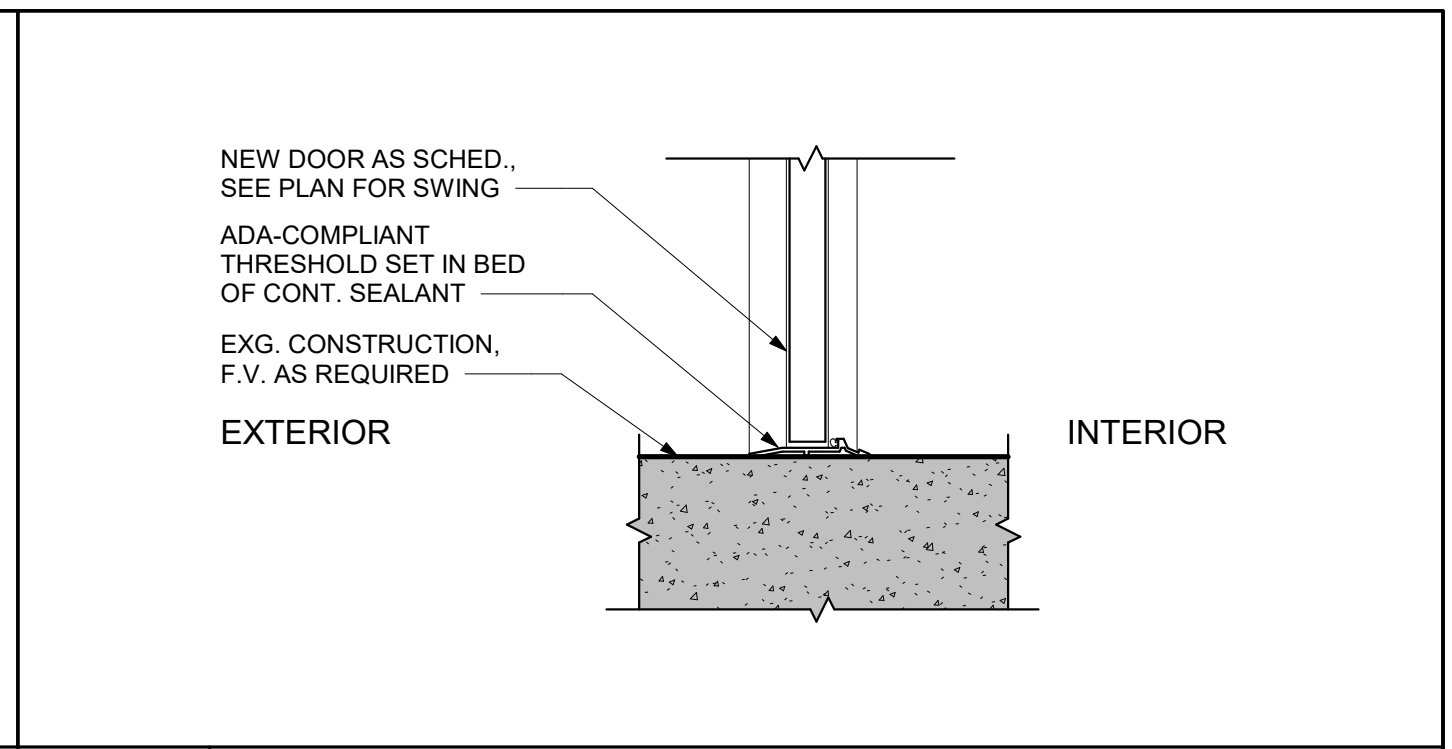
INTERIOR FLOORING TRANSITION DETAILS

ISSUE BLOCK

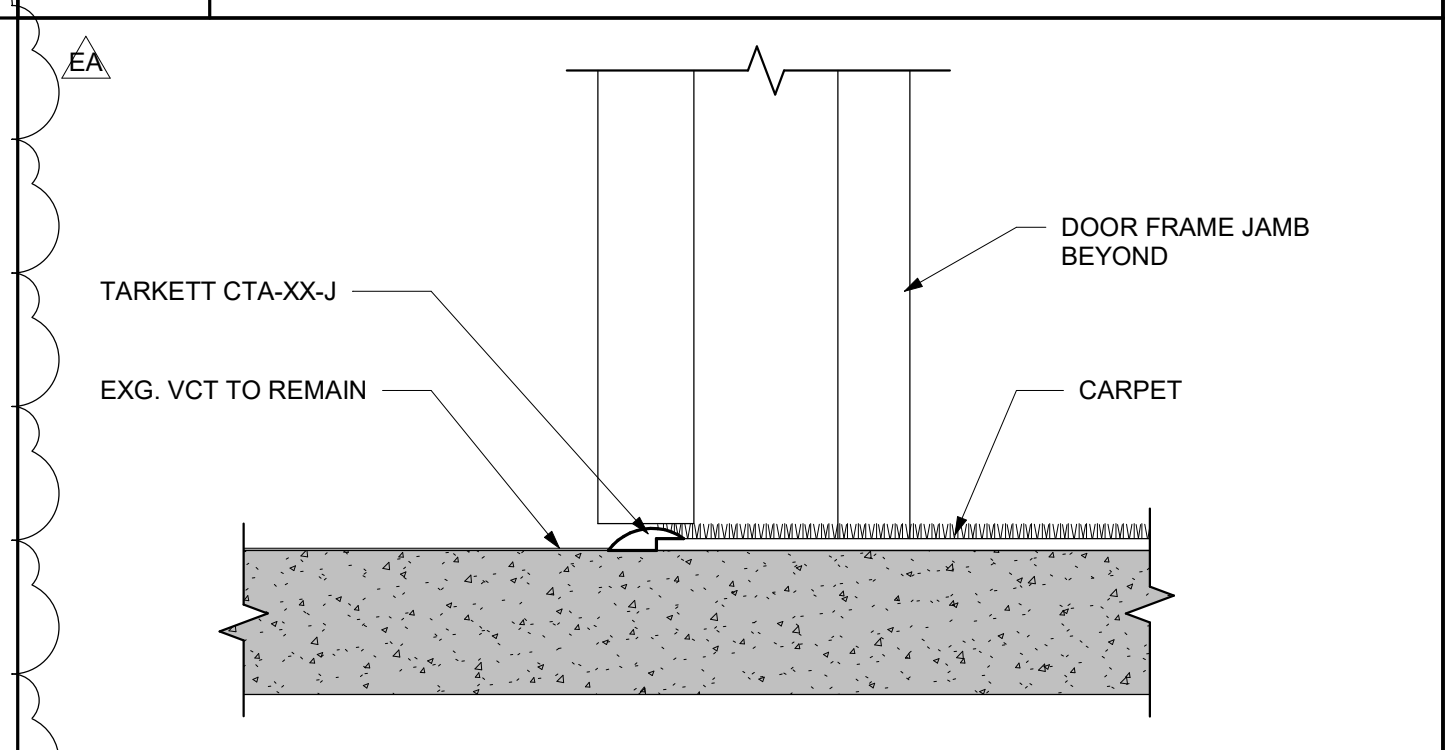
Mark	Date	Description
EA	10.07.2024	ADDENDUM 1

PROJECT NO: 2021101.00
DATE: 09.13.2024
SCALE: As indicated
DRAWN BY: MNS | PROJ MGR: BAH

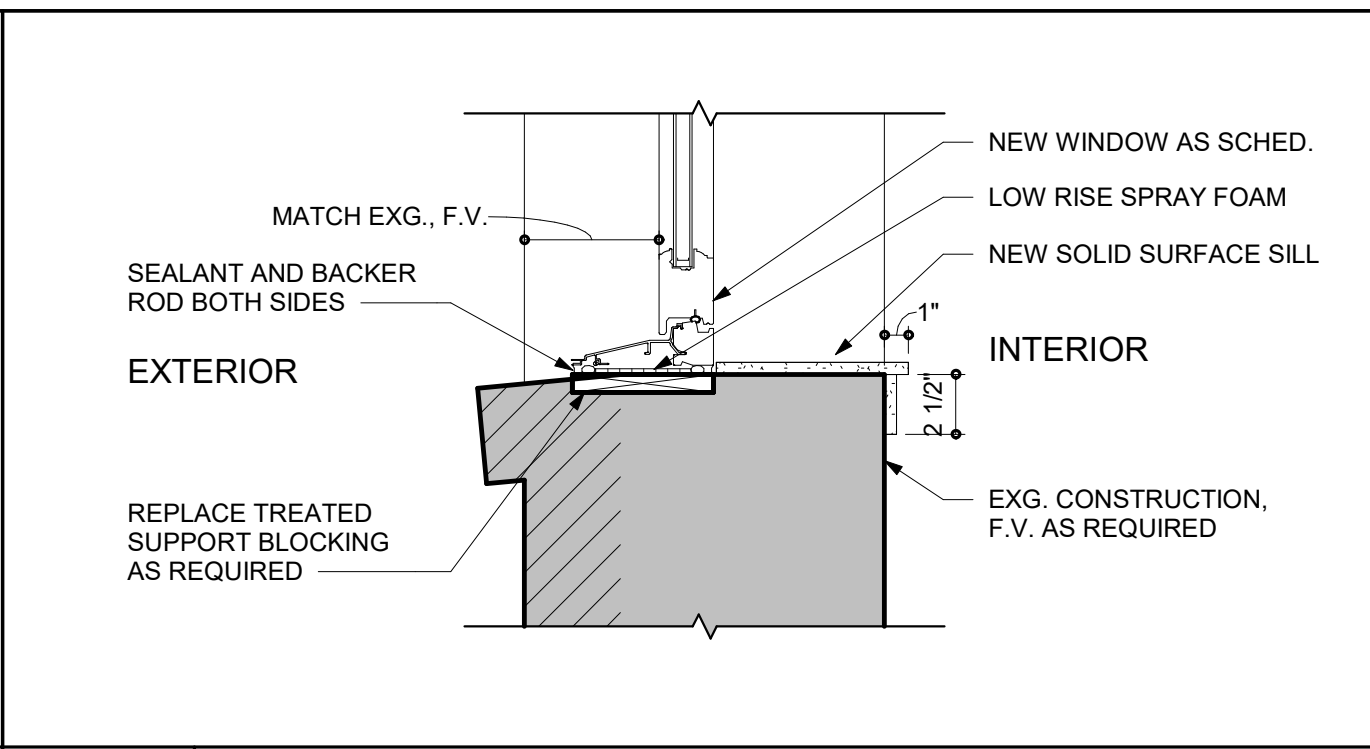
A602-E
COPYRIGHT © 2024



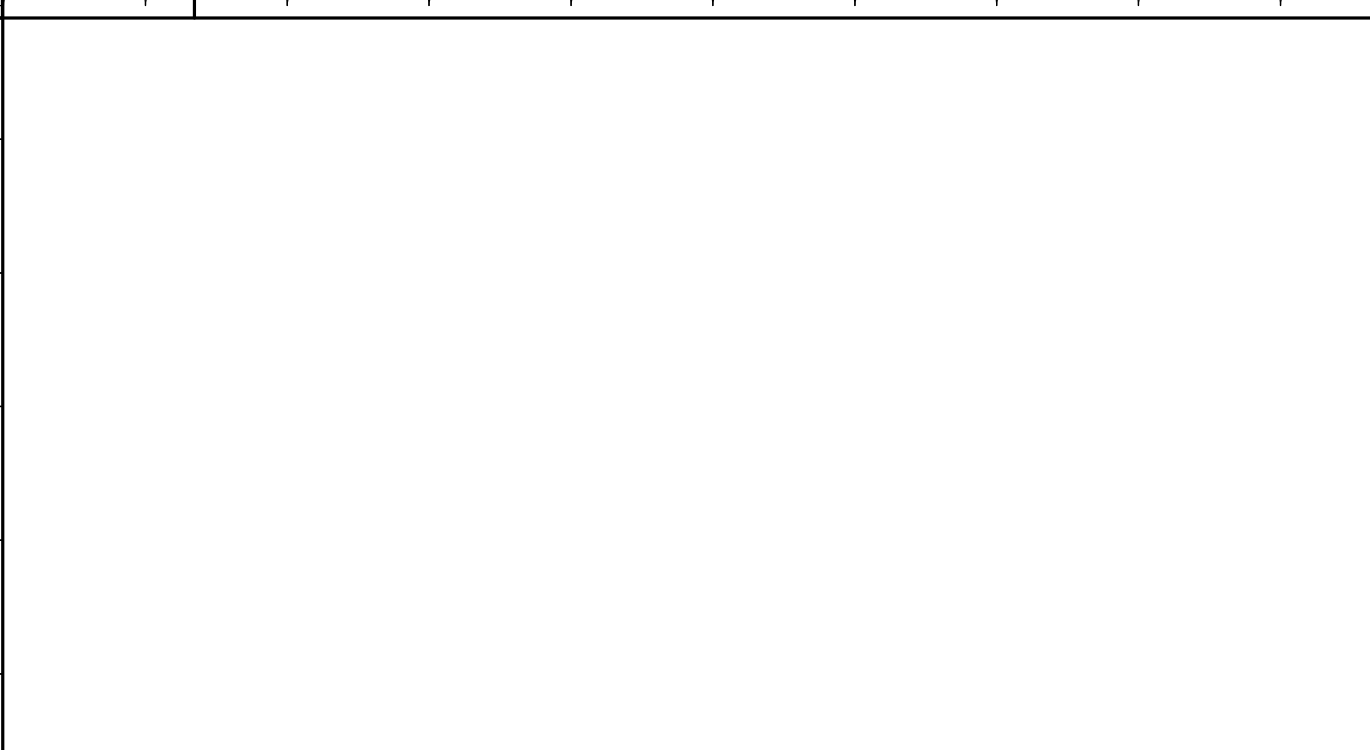
S5 EXTERIOR THRESHOLD DETAIL
SCALE: 1 1/2" = 1'-0"



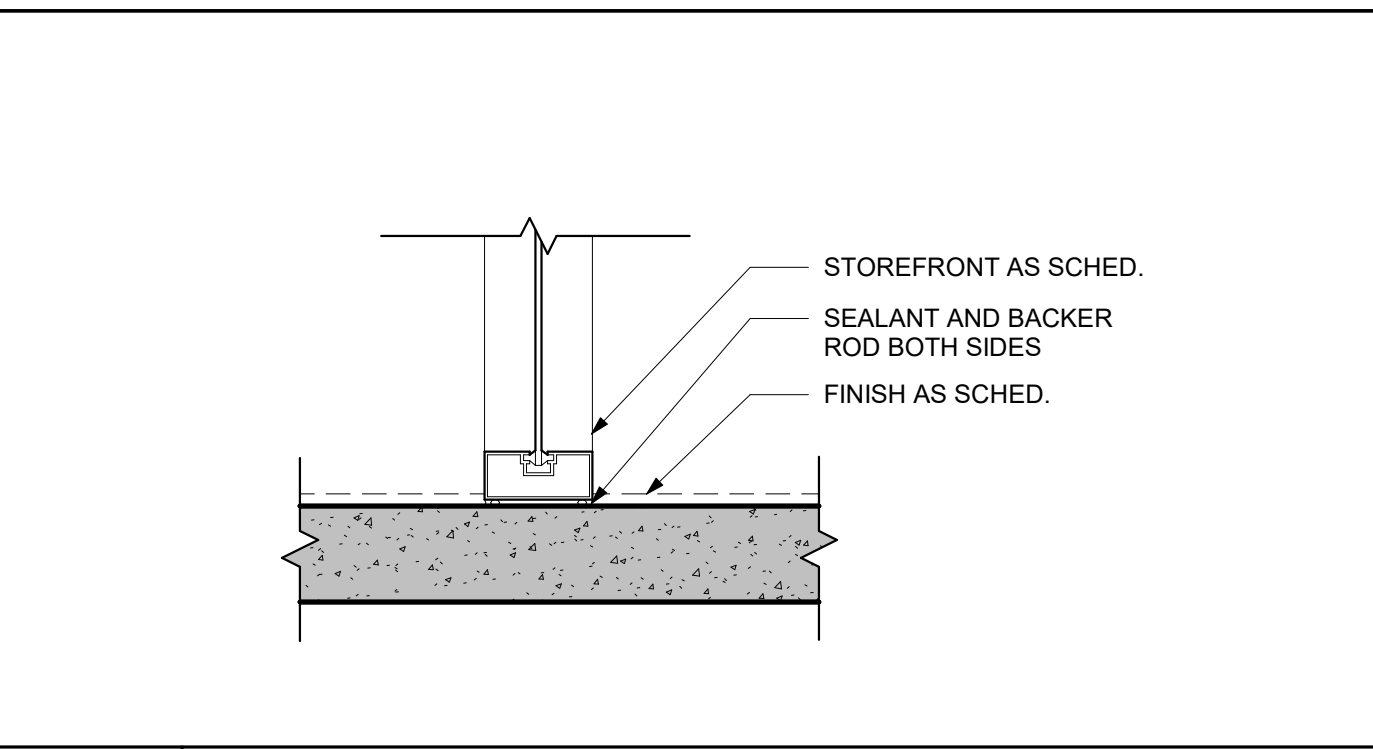
S10 FINISH TRANSITION - EXISTING VCT TO CARPET
SCALE: 3" = 1'-0"



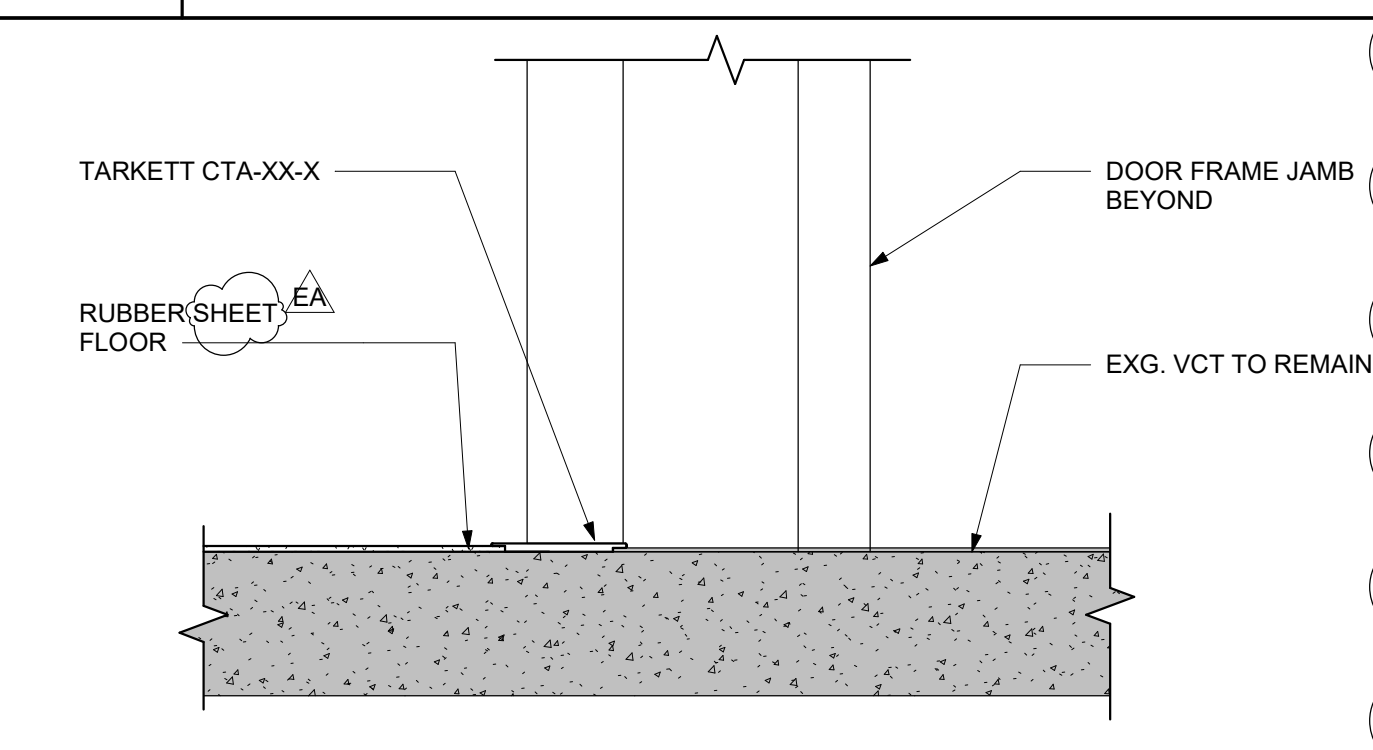
S4 EXTERIOR SILL DETAIL @ WINDOW
SCALE: 1 1/2" = 1'-0"



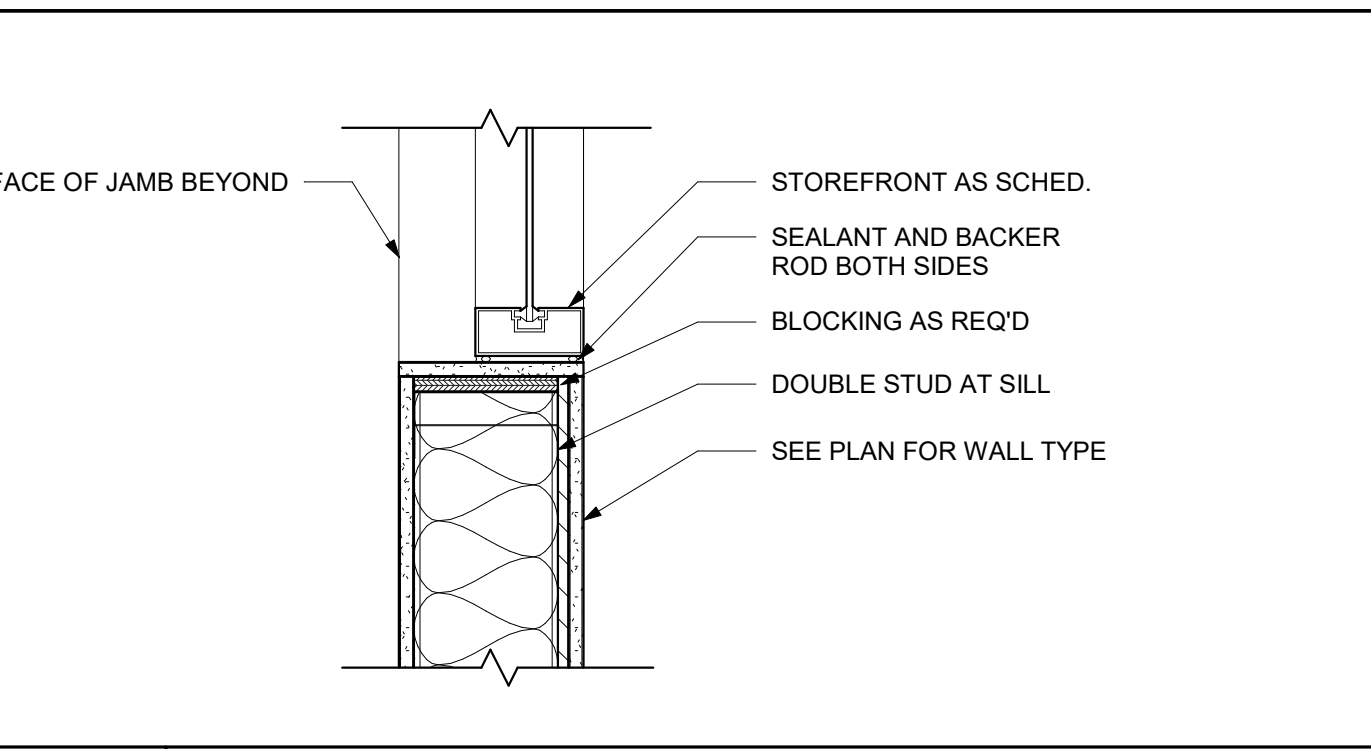
S14 FINISH TRANSITION - RUBBER SHEET FLOORING TO RUBBER TILE
SCALE: 3" = 1'-0"



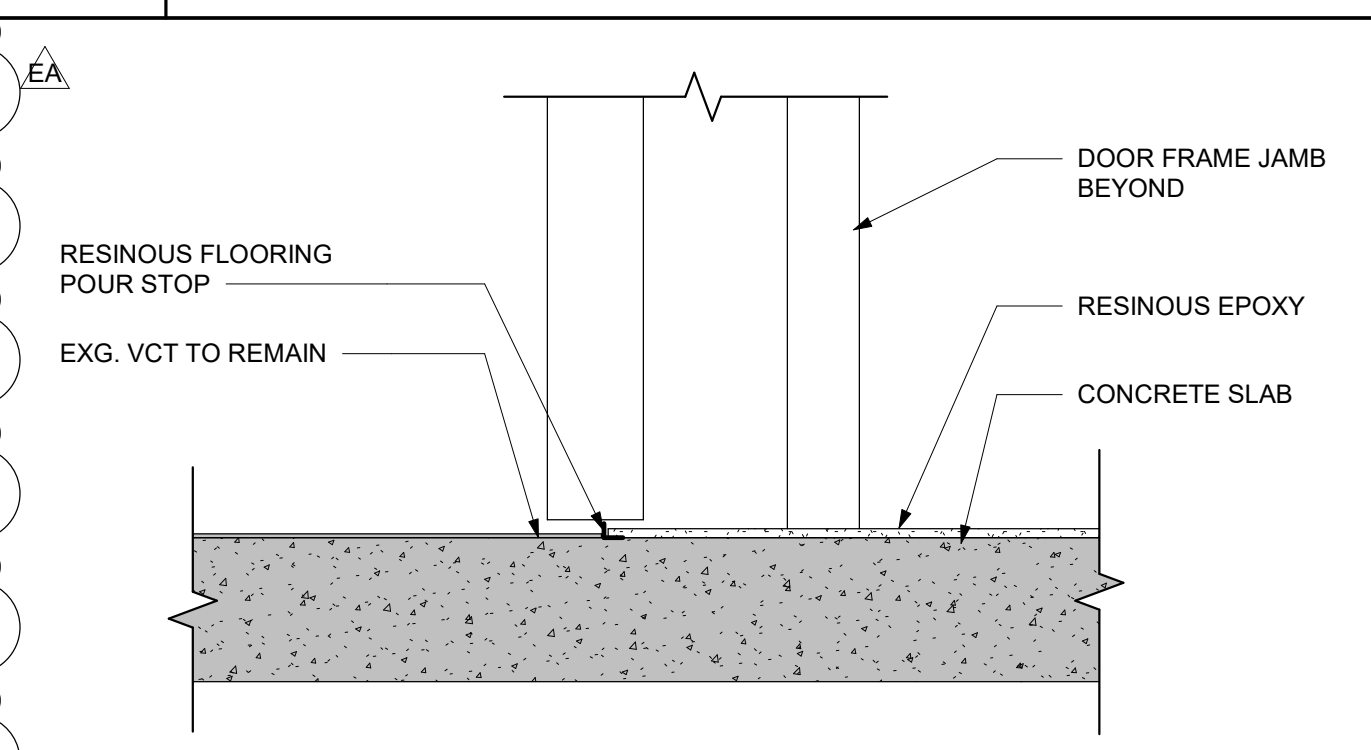
S3 TYPICAL INTERIOR STOREFRONT - SILL DETAIL
SCALE: 1 1/2" = 1'-0"



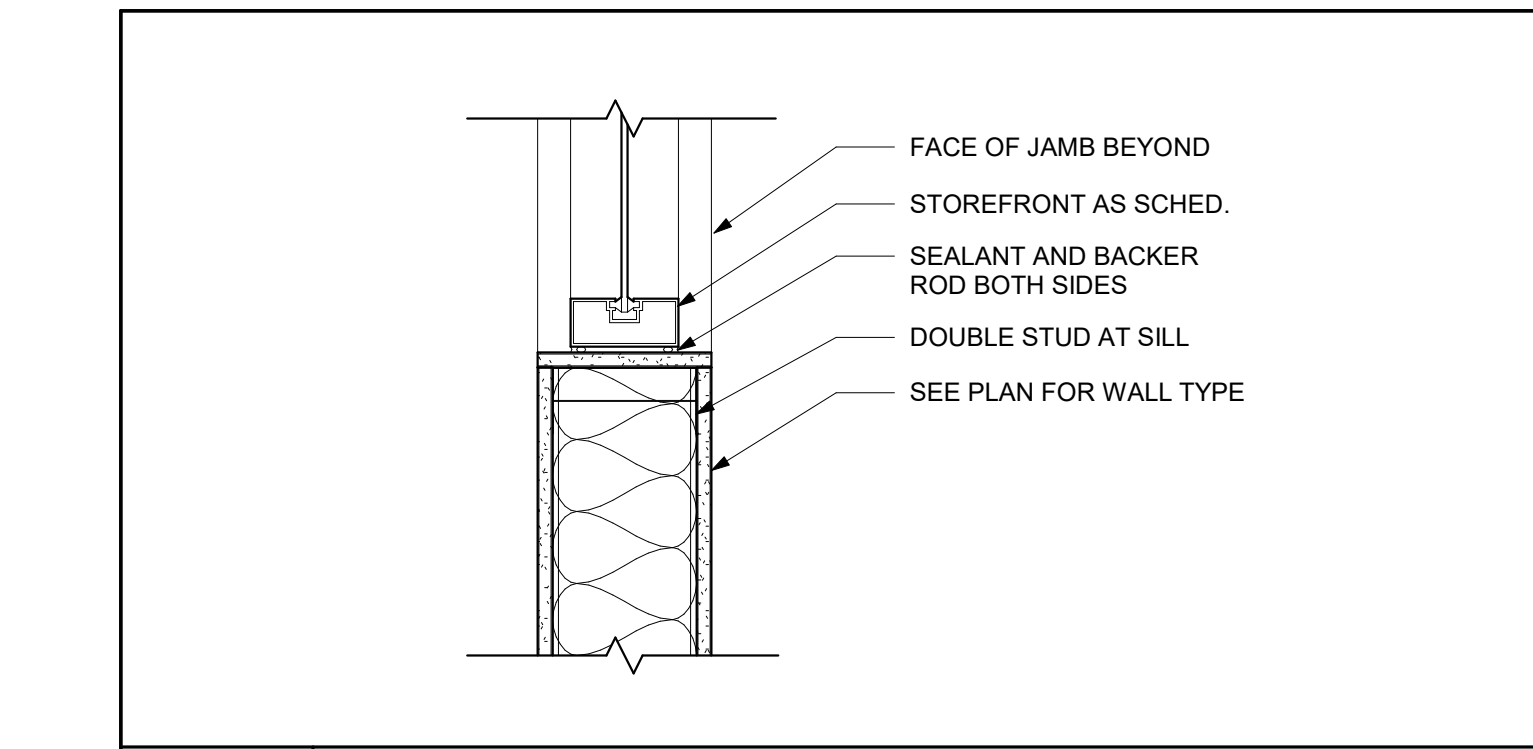
S8 FINISH TRANSITION - RUBBER SHEET FLOORING TO EXISTING VCT
SCALE: 3" = 1'-0"



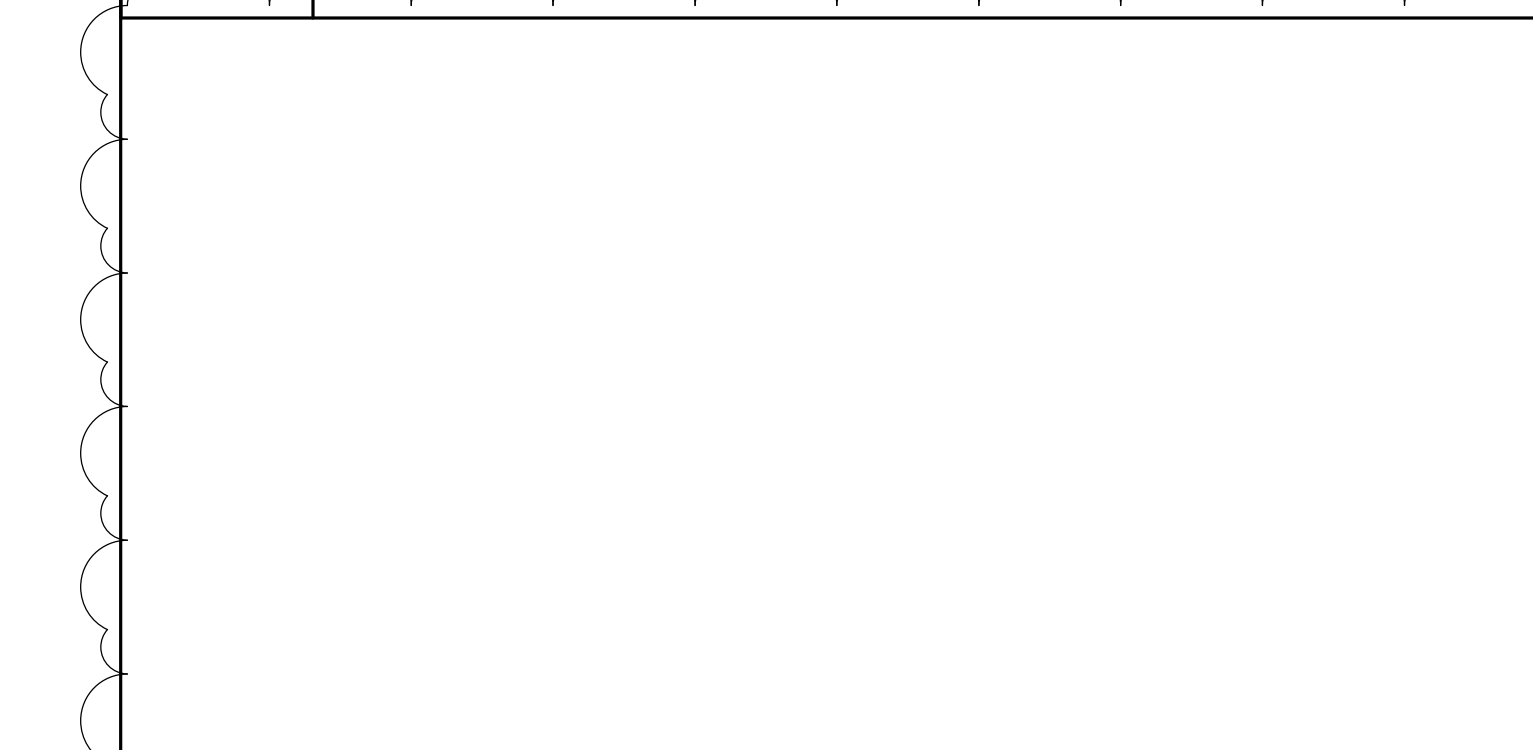
S2 TYPICAL STOREFRONT AT BALLISTIC METAL STUD - SILL DETAIL
SCALE: 1 1/2" = 1'-0"



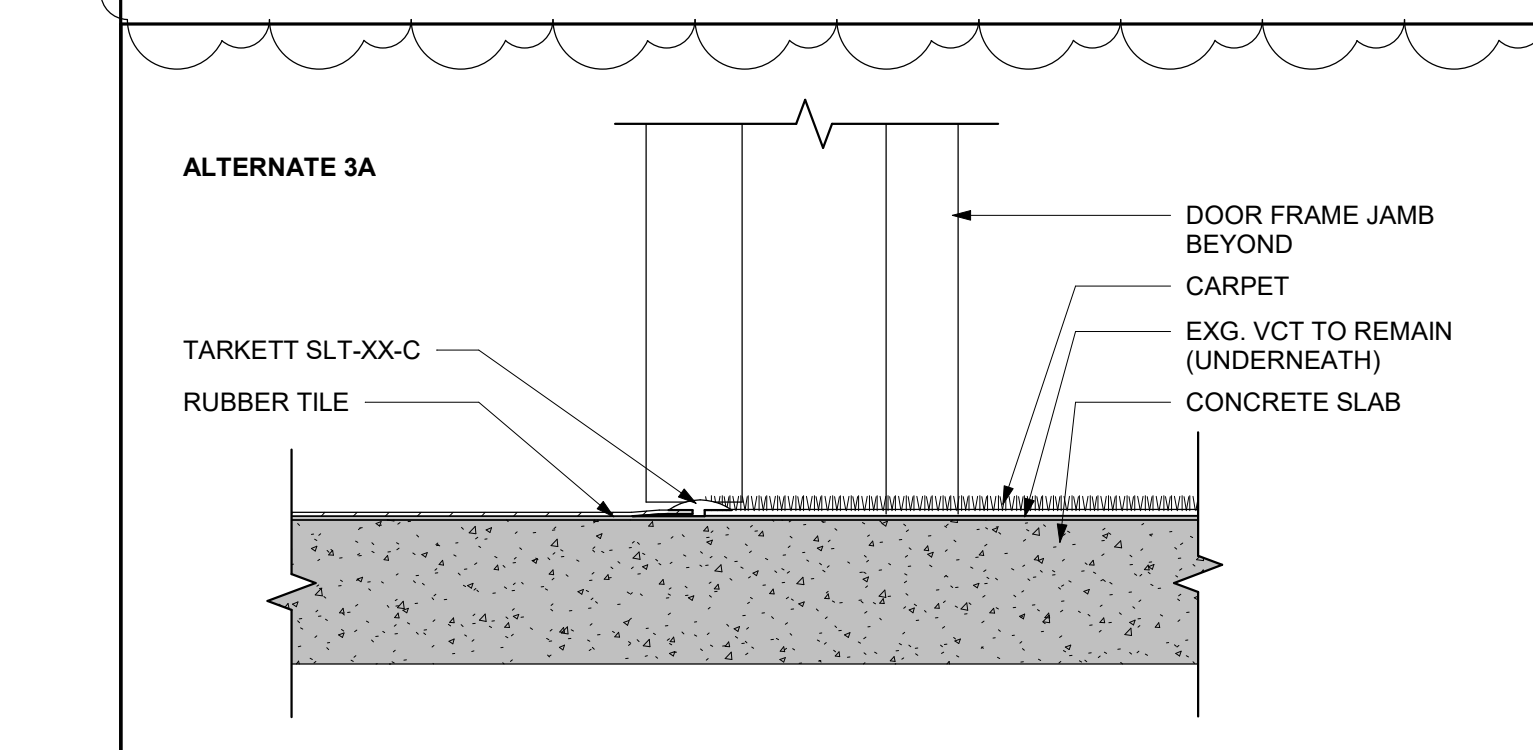
S7 FINISH TRANSITION - EXISTING VCT TO RESINOUS EPOXY
SCALE: 3" = 1'-0"



S1 TYPICAL STOREFRONT AT METAL STUD - SILL DETAIL
SCALE: 1 1/2" = 1'-0"



S11 FINISH TRANSITION - RUBBER TILE TO CARPET
SCALE: 3" = 1'-0"



S12 FINISH TRANSITION - RUBBER TILE TO RESINOUS EPOXY
SCALE: 3" = 1'-0"



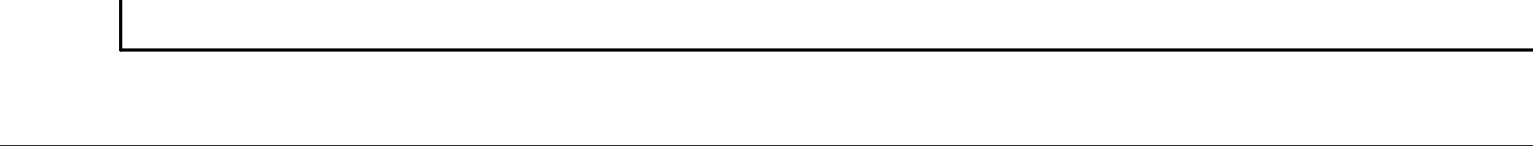
S13 FINISH TRANSITION - RUBBER TILE TO EXISTING VCT
SCALE: 3" = 1'-0"



S14 FINISH TRANSITION - RUBBER SHEET FLOORING TO RUBBER TILE
SCALE: 3" = 1'-0"



S8 FINISH TRANSITION - RUBBER SHEET FLOORING TO EXISTING VCT
SCALE: 3" = 1'-0"



S10 FINISH TRANSITION - EXISTING VCT TO CARPET
SCALE: 3" = 1'-0"

Mark	Date	Description
EA	10.07.2024	ADDENDUM 1

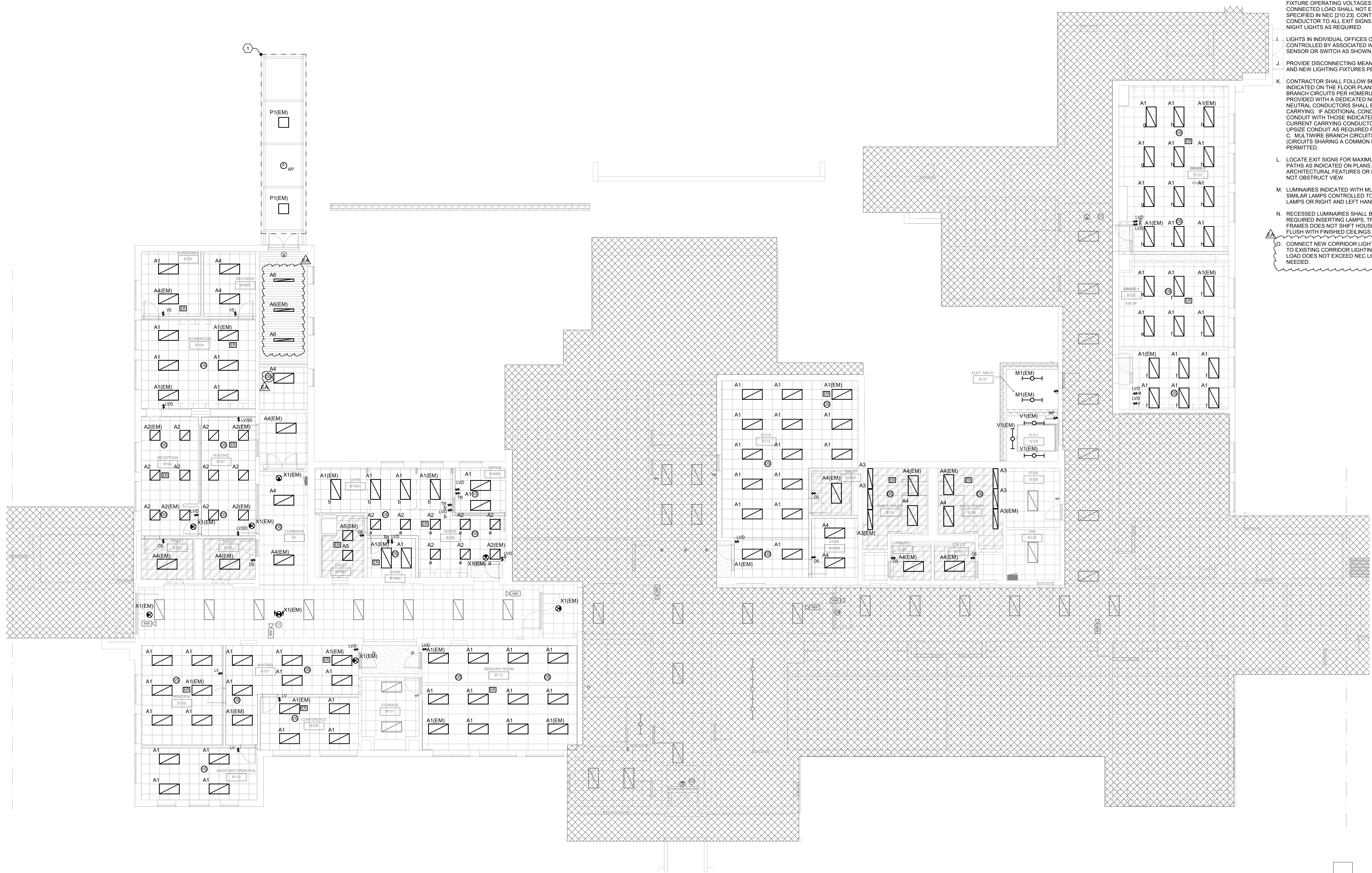
PROJECT NO:	2021101.00
DATE:	09.13.2024
SCALE:	1/8" = 1'-0"
DRAWN BY:	JHA PROJ MGR: MO

KEY NOTES

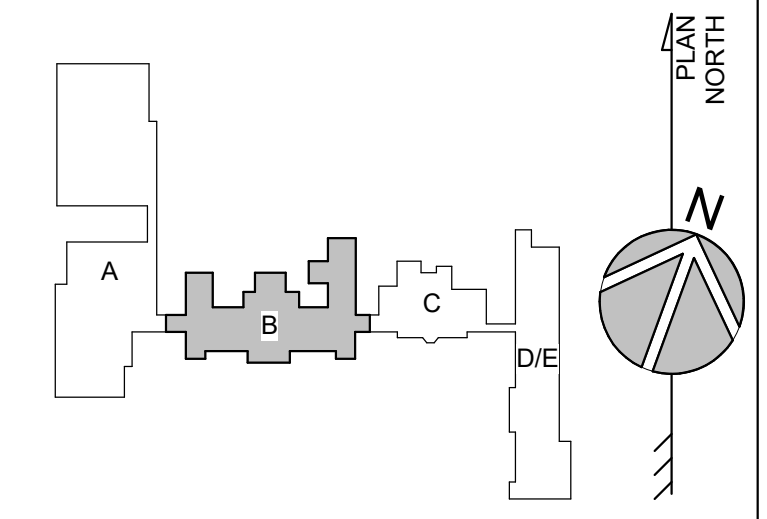
- 1 P1(EM) FIXTURES SHALL BE CONTROLLED BY NEW EXTERIOR PHOTOCELL. PHOTOCELL MANUFACTURER: PACLIGHTS (MODEL # SE-PC-SP) OR EQUIVALENT.

GENERAL NOTES (LIGHTING):

- A. REFER TO SHEET E-001 FOR SYMBOLS AND ABBREVIATIONS.
- B. ALL BOLD/EDGED/SOLID WORK SHOWN ON THIS PLAN SHALL BE NEW U.O.N.
- C. REFER TO THE ARCHITECT'S REFLECTED CEILING PLANS, ELEVATIONS, AND CASEWORK DETAILS FOR EXACT LOCATIONS OF ALL WALL AND CEILING MOUNTED ELECTRICAL DEVICES.
- D. REFER TO RISER DIAGRAM AND BRANCH CIRCUIT SCHEDULE FOR FEEDER AND BRANCH CIRCUIT CONDUCTOR SIZES U.O.N.
- E. REFER TO SHEET E-001 ELECTRICAL DETAILS FOR ADDITIONAL INFORMATION ABOUT LIGHTING FIXTURES, WIRING, AND DEVICES.
- F. CONNECT ALL NORMAL LIGHTING FIXTURES TO EXISTING NORMAL LIGHTING CIRCUIT MAINTAINED DURING DEMOLITION SERVING THAT AREA.
- G. (EM) INDICATES FIXTURES CONNECTED TO EMERGENCY POWER SOURCE. VERIFY THAT CIRCUIT AND FIXTURE OPERATING VOLTAGES ARE COMPATIBLE AND ENSURE CONNECTED LOAD SHALL NOT EXCEED ALLOWABLE LOAD LIMITS SPECIFIED IN NEC [210.23].
- H. ALL EXIT SIGNS AND EMERGENCY LIGHTING FIXTURES SHALL BE CONNECTED TO CLOSEST EXISTING EMERGENCY CIRCUIT SERVING THAT AREA MAINTAIN DURING DEMOLITION. VERIFY THAT CIRCUIT AND FIXTURE OPERATING VOLTAGES ARE COMPATIBLE AND ENSURE CONNECTED LOAD SHALL NOT EXCEED ALLOWABLE LOAD LIMITS SPECIFIED IN NEC [210.23]. CONTRACTOR SHALL PROVIDE UNSWITCHED CONDUCTOR TO ALL EXIT SIGNS, EMERGENCY LIGHT FIXTURES, AND NIGHT LIGHTS AS REQUIRED.
- I. LIGHTS IN INDIVIDUAL OFFICES OR ENCLOSED AREAS SHALL BE CONTROLLED BY ASSOCIATED WALL BOX OCCUPANCY/VACANCY SENSOR OR SWITCH AS SHOWN.
- J. PROVIDE DISCONNECTING MEANS FOR DRIVERS FOR ALL RELOCATED AND NEW LIGHTING FIXTURES PER NEC [410.130(G)(1)].
- K. CONTRACTOR SHALL FOLLOW BRANCH CIRCUITING LAY-OUT, AS INDICATED ON THE FLOOR PLANS, WITH A MAXIMUM OF THREE (3) BRANCH CIRCUITS PER HOMERUN. EACH BRANCH CIRCUIT SHALL BE PROVIDED WITH A DEDICATED NEUTRAL CONDUCTOR. DEDICATED NEUTRAL CONDUCTORS SHALL BE CONSIDERED CURRENT CARRYING. IF ADDITIONAL CONDUCTORS ARE RUN IN THE SAME CONDUIT WITH THOSE INDICATED, CONTRACTOR SHALL DERATE ALL CURRENT CARRYING CONDUCTORS PER N.E.C. #310.15(B)(3), AND UPSIZE CONDUIT AS REQUIRED PER N.E.C. #300.17 AND ANNEX C. MULTIWIRE BRANCH CIRCUITS AS DEFINED IN N.E.C. #100 / 210.4 (CIRCUITS SHARING A COMMON NEUTRAL CONDUCTOR) SHALL NOT BE PERMITTED.
- L. LOCATE EXIT SIGNS FOR MAXIMUM VIEWING AREA TO IDENTIFY EGRESS PATHS AS INDICATED ON PLANS. COORDINATE LOCATIONS SUCH THAT ARCHITECTURAL FEATURES OR EQUIPMENT FROM OTHER TRADES DO NOT OBSTRUCT VIEW.
- M. LUMINAIRES INDICATED WITH MULTILEVEL SWITCHING SHALL HAVE SIMILAR LAMPS CONTROLLED TOGETHER, I.E. INBOARD AND OUTBOARD LAMPS OR RIGHT AND LEFT HAND LAMPS.
- N. RECESSED LUMINAIRES SHALL BE SECURED SUCH THAT THE FORCE REQUIRED INSERTING LAMPS, TRIMS, LENSES, LOUVERS, OR DOOR FRAMES DOES NOT SHIFT HOUSING. ALL TRIMS SHALL BE COMPLETELY FLUSH WITH FINISHED CEILING AT COMPLETION OF CONSTRUCTION.
- O. CONNECT NEW CORRIDOR LIGHT FIXTURES AND OCCUPANCY SENSORS TO EXISTING CORRIDOR LIGHTING CONTROL SYSTEM. ENSURE THAT LOAD DOES NOT EXCEED NEC LIMITS. PROVIDE ADDITION CONTACTS AS NEEDED.



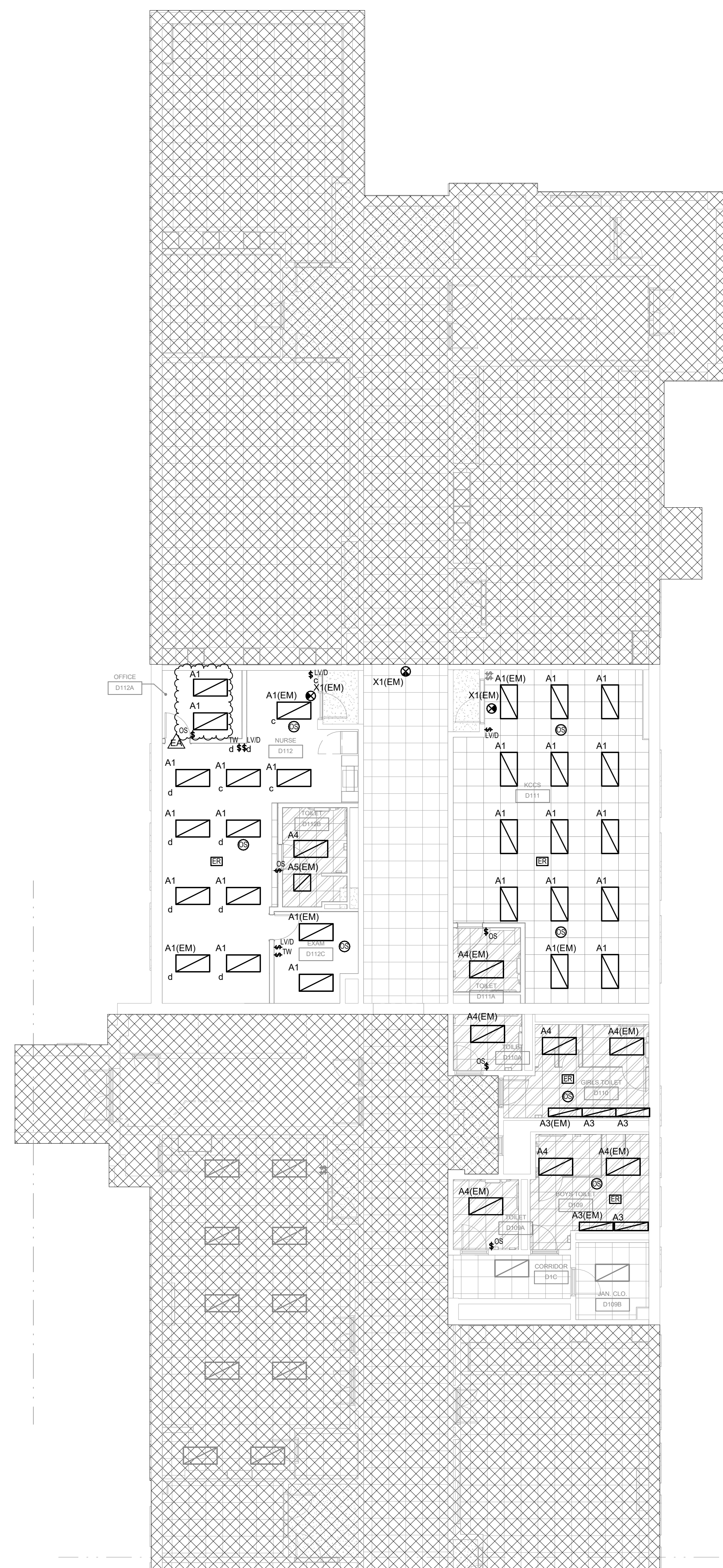
1 FIRST FLOOR ELECTRICAL LIGHTING PLAN - AREA B
SCALE: 1/8" = 1'-0"



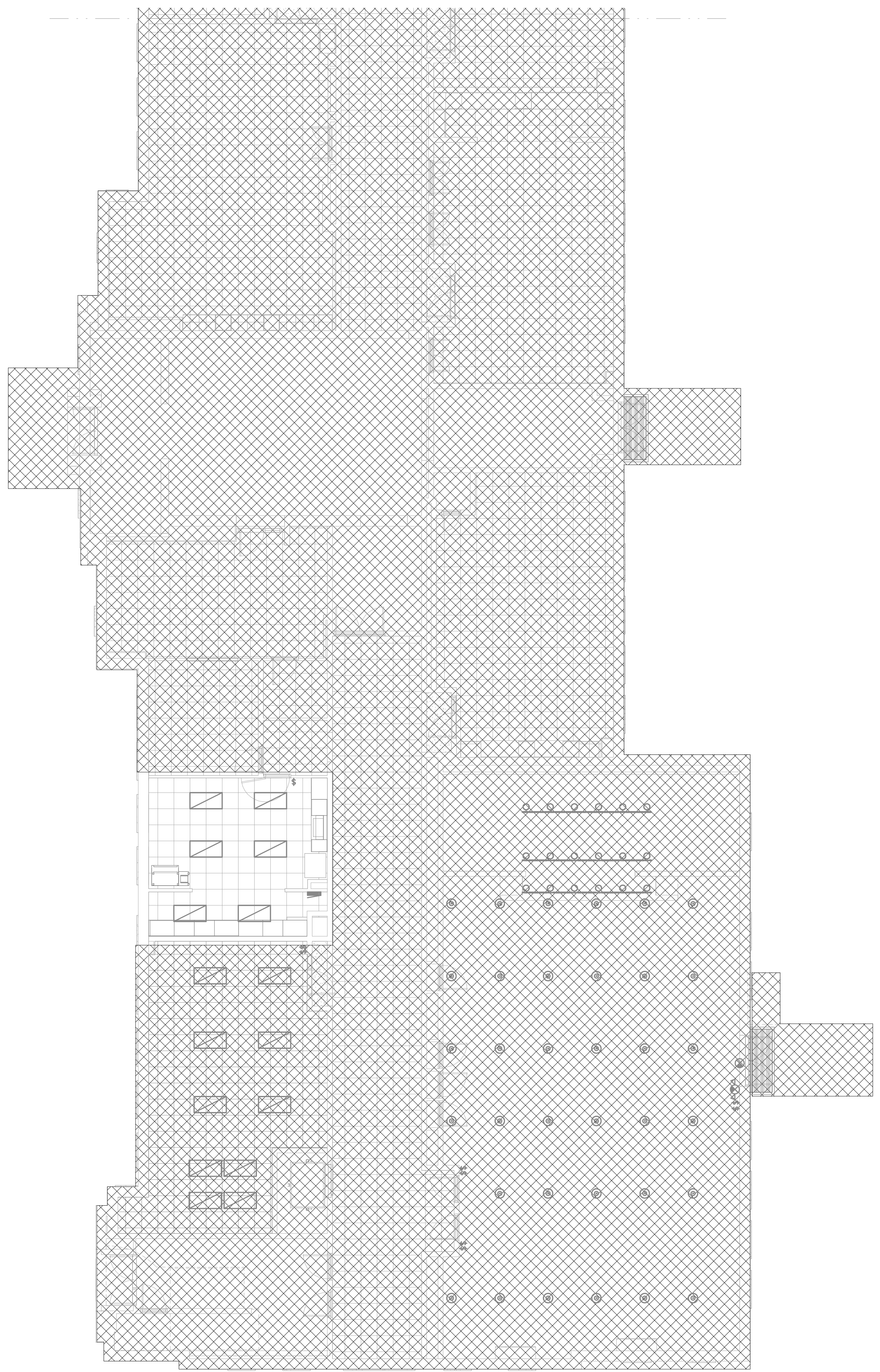
10/24/2024 12:02:31 PM Autodesk Docs://Central Middle School Renovations/00ES23_MEP_1024.rvt

GENERAL NOTES (LIGHTING):

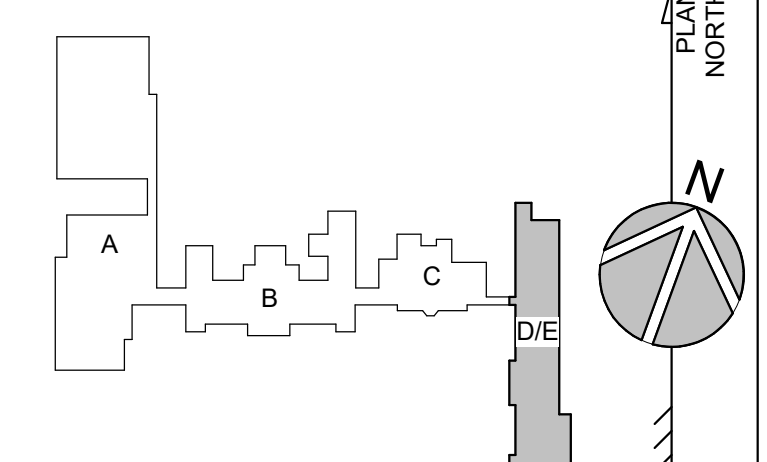
- A. REFER TO SHEET E-001 FOR SYMBOLS AND ABBREVIATIONS.
- B. ALL BOLDED/SOLID WORK SHOWN ON THIS PLAN SHALL BE NEW U.O.N.
- C. REFER TO THE ARCHITECT'S REFLECTED CEILING PLANS, ELEVATIONS, AND CASEWORK DETAILS FOR EXACT LOCATIONS OF ALL WALL AND CEILING MOUNTED ELECTRICAL DEVICES.
- D. REFER TO RISER DIAGRAM AND BRANCH CIRCUIT SCHEDULE FOR FEEDER AND BRANCH CIRCUIT CONDUCTOR SIZES U.O.N.
- E. REFER TO SHEET E-001 ELECTRICAL DETAILS FOR ADDITIONAL INFORMATION ABOUT LIGHTING FIXTURES, WIRING, AND DEVICES.
- F. CONNECT ALL NORMAL LIGHTING FIXTURES TO EXISTING NORMAL LIGHTING CIRCUIT MAINTAINED DURING DEMOLITION SERVING THAT AREA.
- G. (EM) INDICATES FIXTURES CONNECTED TO EMERGENCY POWER SOURCE. VERIFY THAT CIRCUIT AND FIXTURE OPERATING VOLTAGES ARE COMPATIBLE AND ENSURE CONNECTED LOAD SHALL NOT EXCEED ALLOWABLE LOAD LIMITS SPECIFIED IN NEC [210.23].
- H. ALL EXIT SIGNS AND EMERGENCY LIGHTING FIXTURES SHALL BE CONNECTED TO CLOSEST EXISTING EMERGENCY CIRCUIT SERVING THAT AREA MAINTAINED DURING DEMOLITION. VERIFY THAT CIRCUIT AND FIXTURE OPERATING VOLTAGES ARE COMPATIBLE AND ENSURE CONNECTED LOAD SHALL NOT EXCEED ALLOWABLE LOAD LIMITS SPECIFIED IN NEC [210.23]. CONTRACTOR SHALL PROVIDE UNSWITCHED CONDUCTOR TO ALL EXIT SIGNS, EMERGENCY LIGHT FIXTURES, AND NIGHT LIGHTS AS REQUIRED.
- I. LIGHTS IN INDIVIDUAL OFFICES OR ENCLOSED AREAS SHALL BE CONTROLLED BY ASSOCIATED WALL BOX OCCUPANCY/VACANCY SENSOR OR SWITCH AS SHOWN.
- J. PROVIDE DISCONNECTING MEANS FOR DRIVERS FOR ALL RELOCATED AND NEW LIGHTING FIXTURES PER NEC [410.130(G)(1)].
- K. CONTRACTOR SHALL FOLLOW BRANCH CIRCUITING LAY-OUT, AS INDICATED ON THE FLOOR PLANS, WITH A MAXIMUM OF THREE (3) BRANCH CIRCUITS PER HOMERUN. EACH BRANCH CIRCUIT SHALL BE PROVIDED WITH A DEDICATED NEUTRAL CONDUCTOR. DEDICATED NEUTRAL CONDUCTORS SHALL BE CONSIDERED CURRENT CARRYING. IF ADDITIONAL CONDUCTORS ARE RAN IN THE SAME CONDUIT WITH THOSE INDICATED, CONTRACTOR SHALL DERATE ALL CURRENT CARRYING CONDUCTORS PER N.E.C. #310.15(B)(3), AND UPSIZE CONDUIT AS REQUIRED PER N.E.C. #300.17 AND ANNEX C. MULTIWIRE BRANCH CIRCUITS AS DEFINED IN N.E.C. #100 / 210.4 (CIRCUITS SHARING A COMMON NEUTRAL CONDUCTOR) SHALL NOT BE PERMITTED.
- L. LOCATE EXIT SIGNS FOR MAXIMUM VIEWING AREA TO IDENTIFY EGRESS PATHS AS INDICATED ON PLANS. COORDINATE LOCATIONS SUCH THAT ARCHITECTURAL FEATURES OR EQUIPMENT FROM OTHER TRADES DO NOT OBSTRUCT VIEW.
- M. LUMINAIRES INDICATED WITH MULTILEVEL SWITCHING SHALL HAVE SIMILAR LAMPS CONTROLLED TOGETHER, I.E. INBOARD AND OUTBOARD LAMPS OR RIGHT AND LEFT HAND LAMPS.
- N. RECESSED LUMINAIRES SHALL BE SECURED SUCH THAT THE FORCE REQUIRED INSERTING LAMPS, TRIMS, LENSES, LOUVERS, OR DOOR FRAMES DOES NOT SHIFT HOUSING. ALL TRIMS SHALL BE COMPLETELY FLUSH WITH FINISHED CEILINGS AT COMPLETION OF CONSTRUCTION.
- O. CONNECT NEW CORRIDOR LIGHT FIXTURES AND OCCUPANCY SENSORS TO EXISTING CORRIDOR LIGHTING CONTROL SYSTEM. ENSURE THAT LOAD DOES NOT EXCEED NEC LIMITS. PROVIDE ADDITION CONTACTS AS NEEDED.



1 FIRST FLOOR ELECTRICAL LIGHTING PLAN - AREA D
SCALE: 1/8" = 1'-0"



2 FIRST FLOOR ELECTRICAL LIGHTING PLAN - AREA E
SCALE: 1/8" = 1'-0"



PROJECT TITLE

CENTRAL MIDDLE TO ELEMENTARY SCHOOL INTERIOR RENOVATION

211 DELAWARE AVE
DOVER, DE 19901

ISSUED FOR BIDDING
ISSUED: 09/13/2024

SHEET TITLE

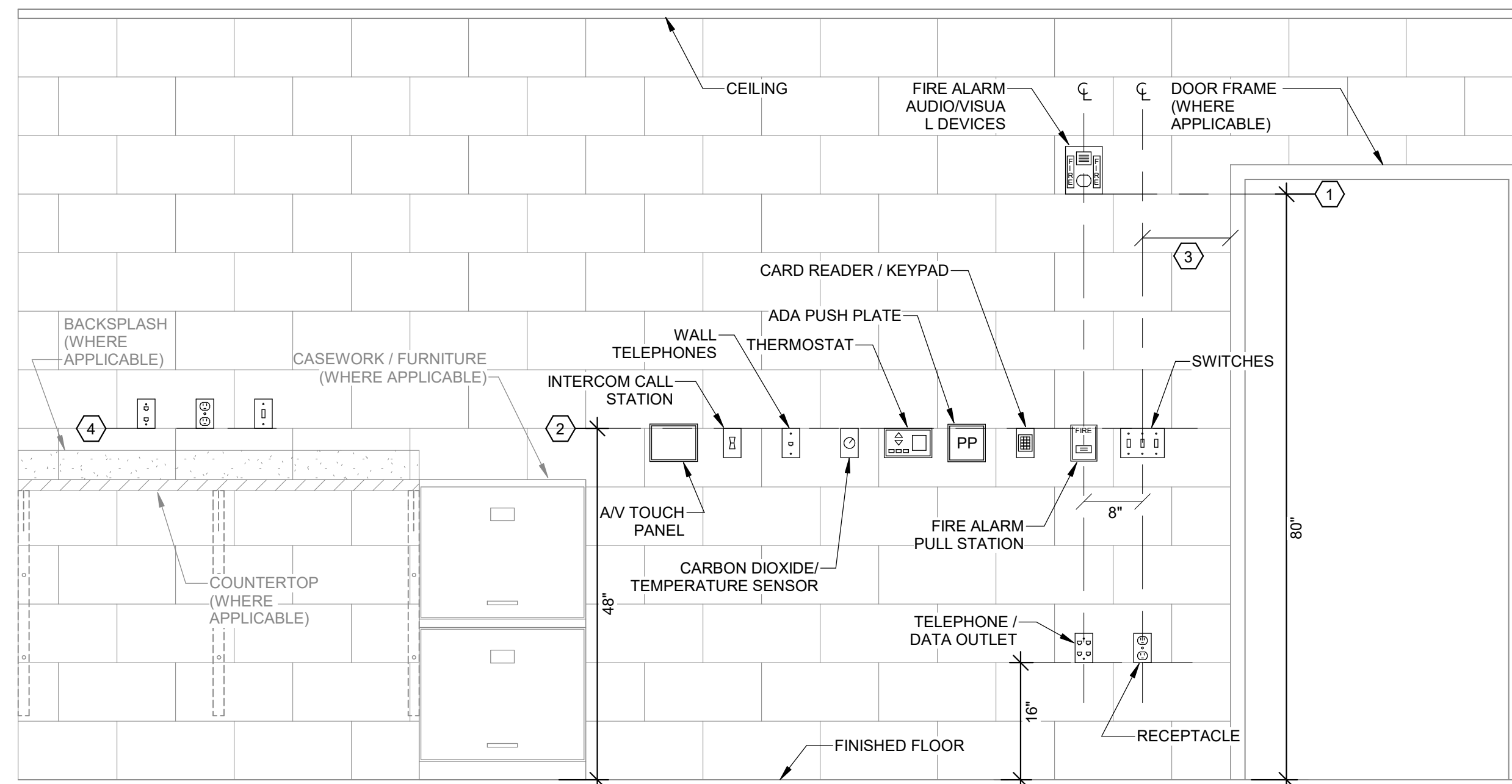
FIRST FLOOR ELECTRICAL LIGHTING PLAN - AREA D/E

ISSUE BLOCK

Mark	Date	Description
EA	10.07.2024	ADDENDUM 1

PROJECT NO: 2021101.00
DATE: 09.13.2024
SCALE: 1/8" = 1'-0"
DRAWN BY: JHA PROJ MGR: MO

E-201D/E
COPYRIGHT © 2021



DEVICE MOUNTING DETAIL - GENERAL NOTES:

- A. WHERE DEVICES OF ANY DISCIPLINE ARE LOCATED IN THE SAME GENERAL AREA ON THE PLANS AND ARE SHOWN TO BE MOUNTED AT A SIMILAR HEIGHT, ALIGN HORIZONTALLY ALONG TOP OF DEVICE BACKBOX (AS SHOWN IN DETAIL AND DESCRIBED IN KEY NOTE #2).
- B. WHERE DEVICES OF ANY DISCIPLINE ARE LOCATED IN THE SAME GENERAL AREA ON THE PLANS AND ARE SHOWN MOUNTED AT DIFFERENT HEIGHTS, ALIGN VERTICALLY ALONG THE CENTERLINE OF THE DEVICE BACKBOX (AS SHOWN IN DETAIL).
- C. FOR ANY WALL OTHER THAN PAINTED GYPSUM BOARD OR CMU, DEVICE LOCATIONS MUST BE FIELD APPROVED BY ENGINEER OR ARCHITECT PRIOR TO INSTALLATION OF FINISHES.

DEVICE MOUNTING DETAIL - KEY NOTES:

1. MOUNT VISUAL NOTIFICATION APPLIANCES SO THAT ENTIRE LENS IS BETWEEN 80° AND 96° AFF. IF CEILING IS TOO LOW FOR DEVICE TO BE MOUNTED ABOVE 80°, MOUNT SO THAT THE LENS IS WITHIN 6" OF FINISHED CEILING.
2. ALIGN BACKBOXES OF DEVICES AT THE MOUNTING HEIGHT INDICATED. MEASURE TO THE TOP OF THE BACKBOX FOR STANDARD OUTLET BOXES. NON-STANDARD BACKBOXES ARE TO BE INSTALLED SUCH THAT THE FINISHED DEVICES ARE ALIGNED ALONG THEIR RESPECTIVE CENTERLINES.
3. MOUNTING HEIGHTS SHOWN ILLUSTRATE DESIGN INTENT AND ARE TO BE FOLLOWED UNLESS CONTRACTED BY APPLICABLE CODE. WHERE DEVICES ARE SHOWN ADJACENT TO DOOR FRAMES ON PLANS, INSTALL 1/2" FROM FRAME TO AVOID SPLISHED SECTIONS OR BRACING. SPECIFIC DEVICES ARE SHOWN IN RELATIVE ORDER FROM DOOR FRAME, WHERE THESE DEVICES ARE NOT PRESENT AT A PARTICULAR LOCATION, ADJUST LOCATIONS CLOSER TO DOOR ACCORDINGLY.
4. THE CONTRACTOR IS TO COORDINATE ALL ROUGH-INS WITH ANY COUNTERTOPS/BACKSPASHES TO AVOID CONFLICT. ALIGN DEVICE BACKBOXES IN THE BOTTOM OF THE NEXT FULL BLOCK ABOVE THE BACKSPASH AS SHOWN. FOR NON-BLOCK WALLS ALIGN BOTTOM OF DEVICE BACKBOXES 4" ABOVE BACKSPASH. COORDINATE WORK WITH CASEWORK AND KITCHEN SHOP DRAWINGS ACCORDINGLY. IF CONFLICT STILL ARISES CONTACT THE ENGINEER FOR DIRECTION ON HOW TO PROCEED.

1 TYPICAL WALL DEVICE MOUNTING DETAIL

NO SCALE

TYPE	DESCRIPTION	BASIS OF DESIGN	EQUAL MANUFACTURERS	MOUNTING	LAMPS / CCT	MINIMUM LUMENS	MAXIMUM WATTAGE	VOLTAGE	REMARKS
A1	2X4 RECESSED LED FIXTURE	COLUMBIA LIGHTING LCAT SERIES LCAT24-9-40-MW-G...-ED1-U	APPROVED EQUIVALENT	RECESSED	4000KLED	3500 LM	33	120	
A1(EM)	2X4 RECESSED LED FIXTURE - EMERGENCY CIRCUIT CONNECTION	COLUMBIA LIGHTING LCAT SERIES LCAT24-9-40-MW-G...-ED1-U	APPROVED EQUIVALENT	RECESSED	4000KLED	3500 LM	33	120	
A2	2X2 RECESSED LED FIXTURE	COLUMBIA LIGHTING LCAT SERIES LCAT22-9-35-LW-G-R...-ED1-U	APPROVED EQUIVALENT	RECESSED	3500KLED	2709 LM	23	120	
A2(EM)	2X2 RECESSED LED FIXTURE - EMERGENCY CIRCUIT CONNECTION	COLUMBIA LIGHTING LCAT SERIES LCAT22-9-35-LW-G-R...-ED1-U	APPROVED EQUIVALENT	RECESSED	3500KLED	2709 LM	23	120	
A3	1X4 RECESSED LED FIXTURE	COLUMBIA LIGHTING LCAT SERIES LCAT22-9-35-XW-G-R...-ED-U	APPROVED EQUIVALENT	RECESSED	3500KLED	2314 LM	19	120	
A3(EM)	1X4 RECESSED LED FIXTURE - EMERGENCY CIRCUIT CONNECTION	COLUMBIA LIGHTING LCAT SERIES LCAT22-9-35-XW-G-R...-ED-U	APPROVED EQUIVALENT	RECESSED	3500KLED	2314 LM	19	120	
A4	2X4 RECESSED LED FIXTURE	COLUMBIA LIGHTING LCAT SERIES LCAT24-9-40-MW-G...-E-U	APPROVED EQUIVALENT	RECESSED	4000KLED	3500 LM	33	120	
A4(EM)	2X4 RECESSED LED FIXTURE - EMERGENCY CIRCUIT CONNECTION	COLUMBIA LIGHTING LCAT SERIES LCAT24-9-40-MW-G...-E-U	APPROVED EQUIVALENT	RECESSED	4000KLED	3500 LM	33	120	
A5	2X2 RECESSED LED FIXTURE	COLUMBIA LIGHTING LCAT SERIES LCAT22-9-35-LW-G-R...-E-U	APPROVED EQUIVALENT	RECESSED	3500KLED	2709 LM	23	120	
A5(EM)	2X2 RECESSED LED FIXTURE - EMERGENCY CIRCUIT CONNECTION	COLUMBIA LIGHTING LCAT SERIES LCAT22-9-35-LW-G-R...-E-U	APPROVED EQUIVALENT	RECESSED	3500KLED	2709 LM	23	120	
A6	5X4 RECESSED LED FIXTURE	COOPER LIGHTING METALUX SERIES 4R6G6-100D-L840-80-A38-4T185DIM	APPROVED EQUIVALENT	RECESSED	4000KLED	4000 LM	36	120	
A6(EM)	5X4 RECESSED LED FIXTURE - EMERGENCY CIRCUIT CONNECTION	COOPER LIGHTING METALUX SERIES 4R6G6-100D-L840-80-A38-4T185DIM	APPROVED EQUIVALENT	RECESSED	4000KLED	4000 LM	36	120	
M1(EM)	4' LED STRIP LIGHT FIXTURE	COLUMBIA LIGHTING CVT44LSCS	APPROVED EQUIVALENT	SURFACE/WALL	3500KLED	4900 LM	32	120	
P1(EM)	EXTERIOR LED CANOPY LIGHT FIXTURE - EMERGENCY CIRCUIT CONNECTION	MPS-4-35-AL-CP-W-ED-U-MPSWG4	APPROVED EQUIVALENT	SURFACE	5000KLED	12555 LM	95	120	
V1(EM)	4' VAPORPROOF LED STRIP LIGHT FIXTURE	COLUMBIA LIGHTING CVT44LSCS	APPROVED EQUIVALENT	SURFACE/WALL	3500KLED	5000 LM	38	120	
X1(EM)	EDGE LIT EXIT SIGN - EMERGENCY CIRCUIT CONNECTION	LITHONIA EDGR SERIES EDG...-FACES- RMR-X2	APPROVED EQUIVALENT	SURFACE/WALL	RED LED	-	2	120	

GENERAL NOTES (LUMINAIRE SCHEDULE):

- A. ALL LUMINAIRES AND COMPONENTS SHALL BE U/L LISTED.
- B. WHERE LUMINAIRES ARE SHOWN SPLIT-WIRED (HALF EMERGENCY POWER / HALF NORMAL POWER) ON FLOOR PLANS, LUMINAIRES SHALL BE PROVIDED WITH MULTIPLE ELECTRONIC BALLASTS FOR MULTIPLE POWER CIRCUITS AS INDICATED ON FLOOR PLANS.
- C. PROVIDE BALLASTS FOR FIXTURE LAMP SWITCHING AS INDICATED ON LIGHTING FLOOR PLANS. WHERE A SINGLE FIXTURE IS POWERED FROM NORMAL AND EMERGENCY POWER, HALF OF THE LAMPS WITH A MINIMUM OF TWO LAMPS SHALL BE ON EMERGENCY POWER.
- D. CONTRACTOR SHALL FOCUS, AIM AND ADJUST LUMINAIRES UNDER THE SUPERVISION AND DIRECTION OF THE ENGINEER AND ARCHITECT. ALLOW LABOR FOR FINAL FOCUS AND ADJUSTMENTS AFTER DARK. LIFTS AND SCAFFOLDING SHALL BE AVAILABLE.
- E. ALL LAY-IN FIXTURES SHALL BE PROVIDED WITH SCREW ON HOLD DOWN CLIPS AND MAXIMUM 6'-0" LONG FLEXIBLE CONDUIT WHIPS.
- F. EXIT SIGNS AND FIXTURES THAT ARE HATCHED OR WHERE THE FIXTURE TYPE CONTAINS THE SUFFIX "E" FOR EMERGENCY OPERATION SHALL HAVE AN INTEGRAL 90 MINUTE BATTERY INVERTER IF NOT POWERED FROM AN EMERGENCY GENERATOR.

COMcheck Software Version COMcheckWeb
Interior Lighting Compliance Certificate

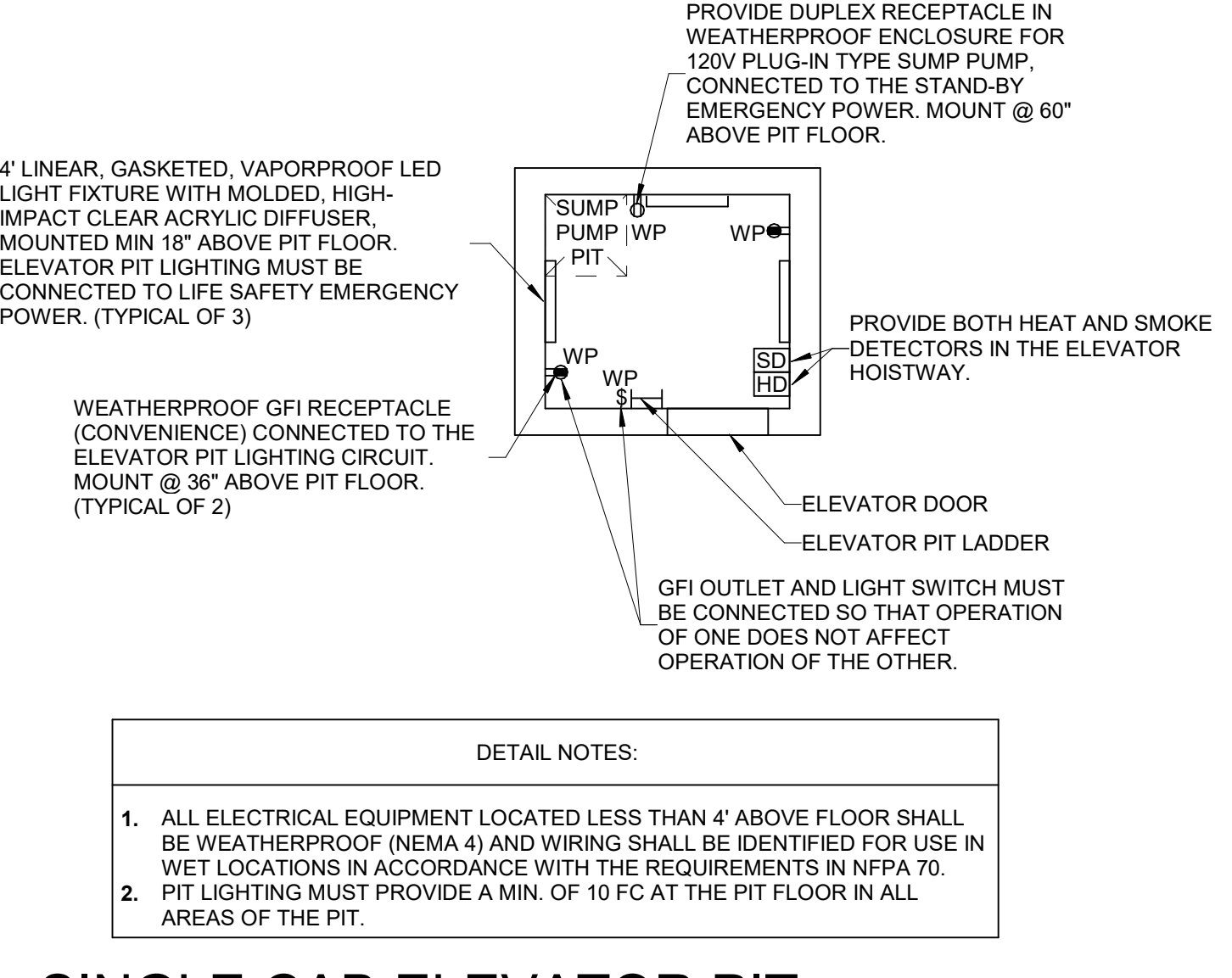
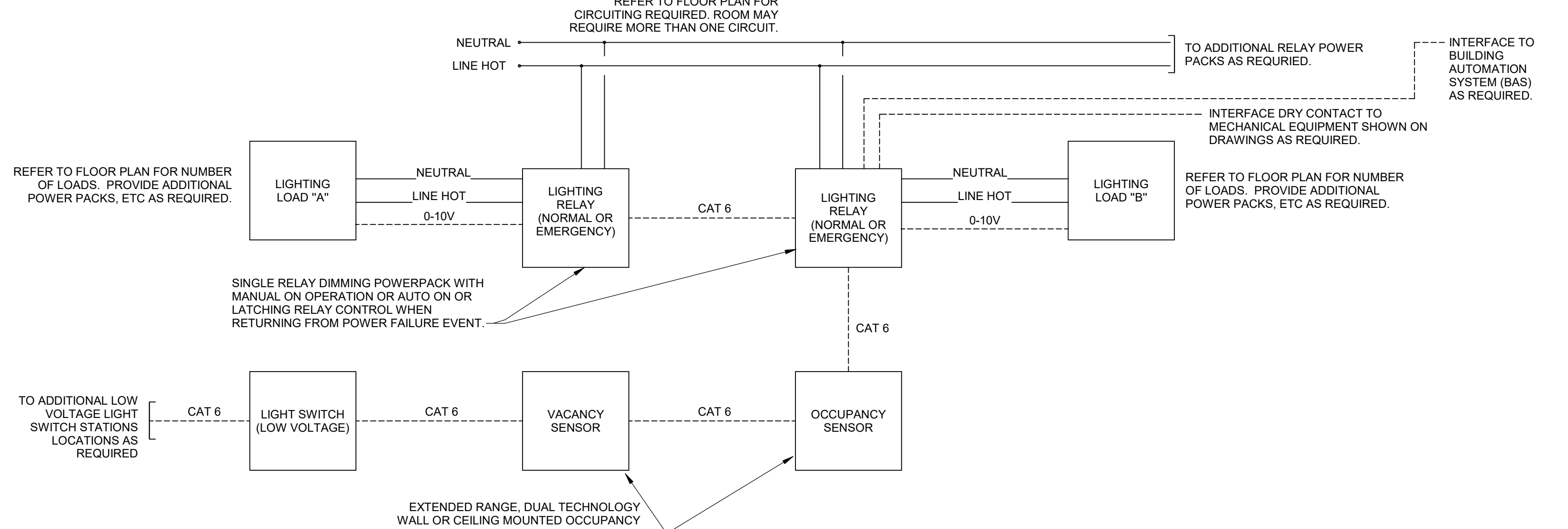
Project Information
 Energy Code: 2018 IECC
 Project Title: Central Middle School Alteration
 Project Type:

Construction Site: 211 DELAWARE AVENUE DOVER, Delaware 19901
 Owner/Agent:
 Designer/Contractor:

A Area Category	B Floor Area (ft ²)	C Allowed Watts / ft ²	D Allowed Watts
1-CLASSROOMS & WORKROOMS (Common Space Types: Classroom/Lecture/Training)	5444	0.96	5226
2-RESTROOMS & TOILETS (Common Space Types: Restrooms)	2954	0.85	2511
3-OFFICES (Common Space Types: Office - Enclosed)	892	0.93	830
4-STORAGE (Common Space Types: Storage >=50 - <=1000 sq.ft.)	399	0.46	184
5-CORRIDOR (Common Space Types: Corridor/Transition >=8 ft wide)	253	0.66	167
6-LOBBY/RECEPTION/WAITING AREA (Common Space Types: Lobby - General)	854	1.00	854
7-NURSE/CONFERENCE (Common Space Types: Conference/Meeting/Multipurpose)	1417	1.07	1516
Total Allowed Watts =			11287

Proposed Interior Lighting Power

A Fixture ID : Description / Lamp / Wattage Per Lamp / Ballast	B Lamps / Fixture	C # of Fixture	D Watt.	E (C X D)
CLASSROOMS & WORKROOMS (Common Space Types: Classroom/Lecture/Training, 5444 sq.ft.)				
2X4 LED TROFFER: A1: Other:	1	41	33	1353
2X4 LED TROFFER: A4: Other:	1	48	33	1584
RESTROOMS & TOILETS (Common Space Types: Restrooms, 2954 sq.ft.)				
1X4 LED TROFFER: A1: Other:	1	26	19	494
2X4 LED TROFFER: A4: Other:	1	45	33	1485
2X2 LED TROFFER: A5: Other:	1	3	23	69
OFFICES (Common Space Types: Office - Enclosed, 892 sq.ft.)				
2X4 LED TROFFER: A1: Other:	1	4	33	132
2X4 LED TROFFER: A4: Other:	1	12	33	396
STORAGE (Common Space Types: Storage >=50 - <=1000 sq.ft., 399 sq.ft.)				
2X4 LED TROFFER: A4: Other:	1	4	33	132
CORRIDOR (Common Space Types: Corridor/Transition >=8 ft wide, 253 sq.ft.)				
2X4 LED TROFFER: A4: Other:	1	4	33	132
LOBBY/RECEPTION/WAITING AREA (Common Space Types: Lobby - General, 854 sq.ft.)				
2X4 LED TROFFER: A4: Other:	1	7	33	231
2X2 LED TROFFER: A5: Other:	1	12	23	276
NURSE/CONFERENCE (Common Space Types: Conference/Meeting/Multipurpose, 1417 sq.ft.)				
2X4 LED TROFFER: A1: Other:	1	18	33	594
2X2 LED TROFFER: A2: Other:	1	8	23	184
2X4 LED TROFFER: A4: Other:	1	4	33	132
Total Proposed Watts =			7194	

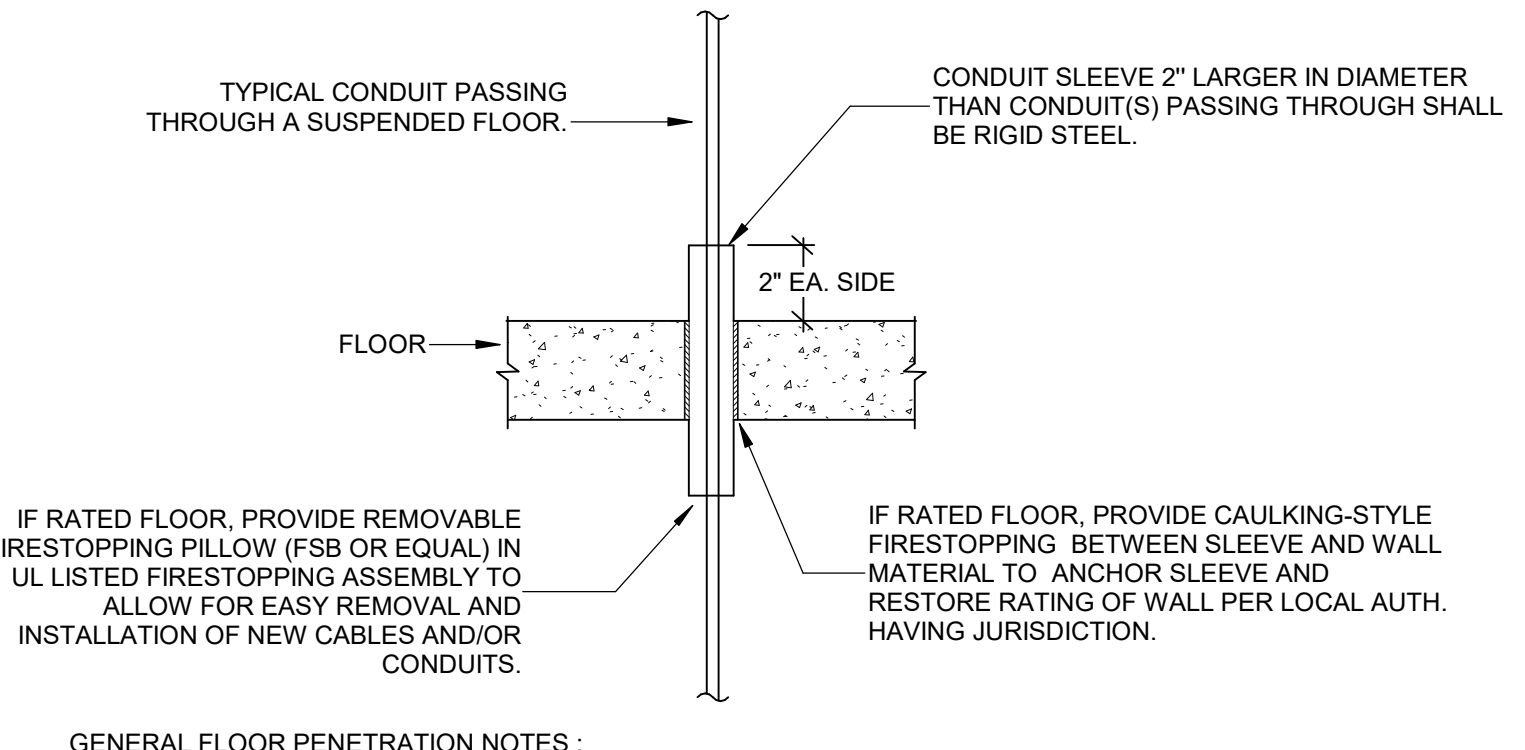


4 SINGLE CAB ELEVATOR PIT

NO SCALE

2 LIGHTING CONTROL WIRING DIAGRAM

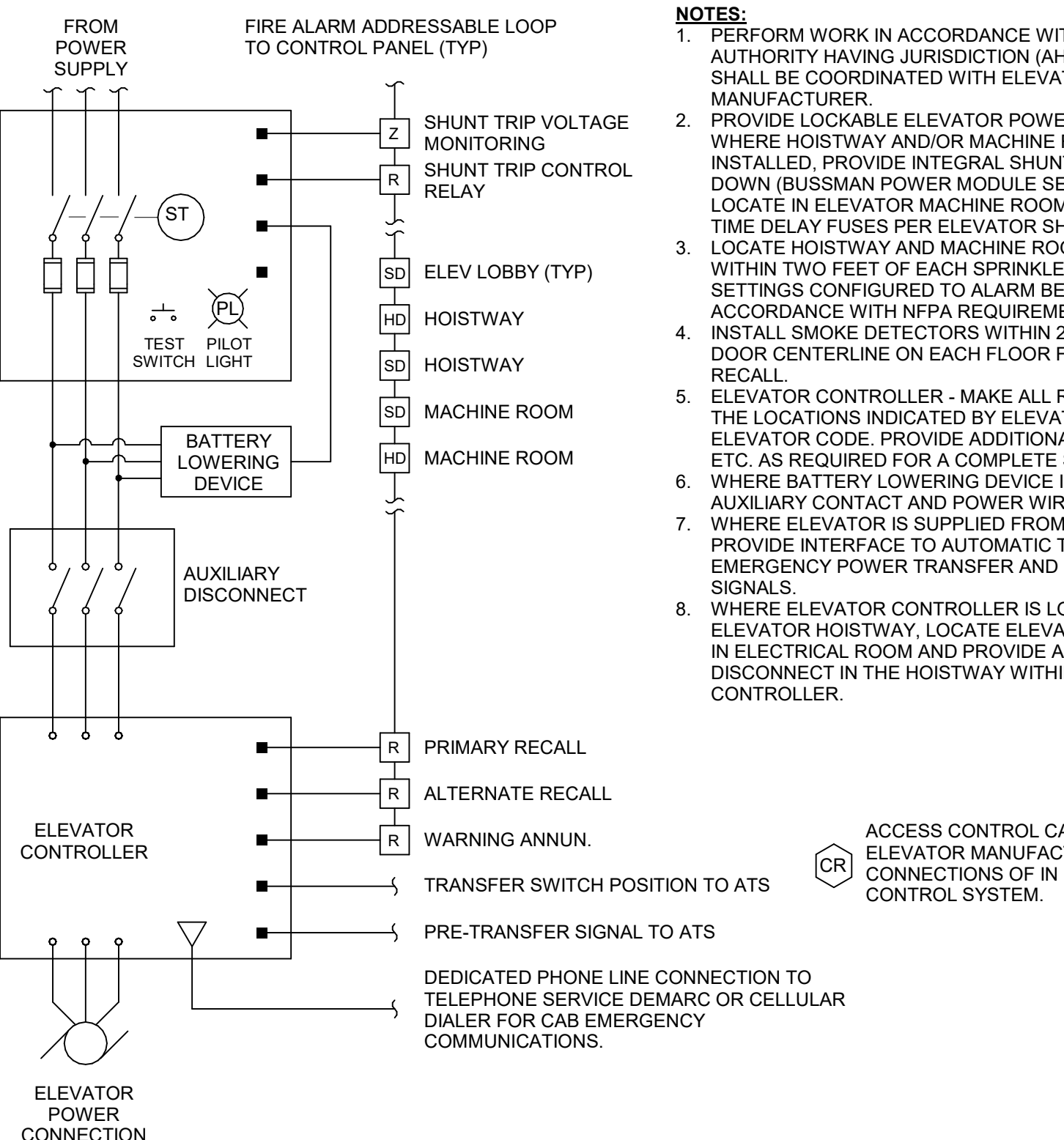
NO SCALE



GENERAL FLOOR PENETRATION NOTES:
 A. WHERE CONDUITS PENETRATE A FLOOR SLAB AND ARE EXPOSED, PROVIDE SQUARE 4" HIGH CONCRETE PAD AROUND CONDUIT SLEEVE AND EXTEND SLEEVE 4" ABOVE PAD.
 B. WHERE CONDUITS OR SLEEVES PENETRATE FLOORING IN GROUPS, THE CONCRETE PAD SHOULD BE CONTINUOUS AROUND ALL CONDUITS OR SLEEVES.

5 ELEVATOR CONNECTION DIAGRAM

NO SCALE



ARCHITECTURE ENGINEERING
 Delaware
 309 S Governors Ave
 Dover, DE 19904
 302.734.7950
 The Tower at STAR Campus
 100 Discovery Boulevard, Suite 102
 Newark, DE 19713
 302.369.3700
 Maryland
 312 West Main St, Suite 300
 Salisbury, MD 21801
 410.546.1100
 North Carolina
 3333 Jackie Drive, Suite 120
 Wilmington, NC 28403
 910.341.7600
 www.beckermorgan.com

CMTA, INC.
 FIRE PROTECTION, PLUMBING,
 MECHANICAL, AND ELECTRICAL ENGINEER
 200 WESTGATE CIRCLE, SUITE 404
 ANNAPOLIS, MD 21401
 410-921-3510

RICHARD Y. JOHNSON & SON, INC.
 CONSTRUCTION MANAGER
 18404 JOHNSON AVENUE
 LINCOLN, DELAWARE 19960
 302-422-3732 fax 302-422-4696

CENTRAL MIDDLE TO ELEMENTARY SCHOOL INTERIOR RENOVATION

211 DELAWARE AVE
 DOVER, DE 19901

ISSUED FOR BIDDING
 09/13/2024

ELECTRICAL DETAILS

Mark	Date	Description
EA	10.07.2024	ADDENDUM 1

PROJECT NO: 2021101.00
 DATE: 09.13.2024
 SCALE: As Indicated
 DRAWN BY: JHA PROJ MGR: MO

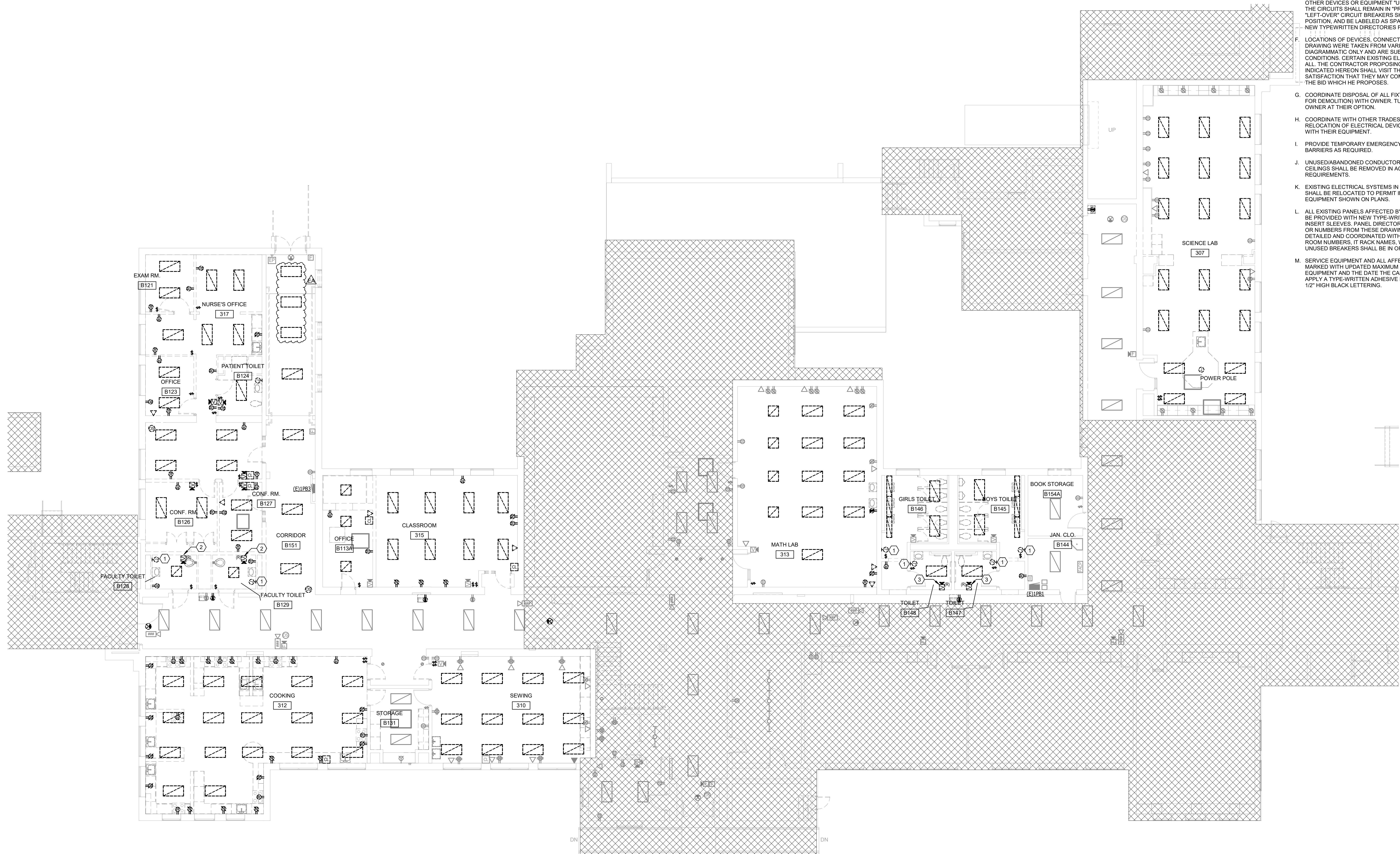
10/4/2024 12:02:55 PM \\Autodesk-CrescentMiddleSchool-Renovations\WDES23_MEP_1024.rvt

KEY NOTES

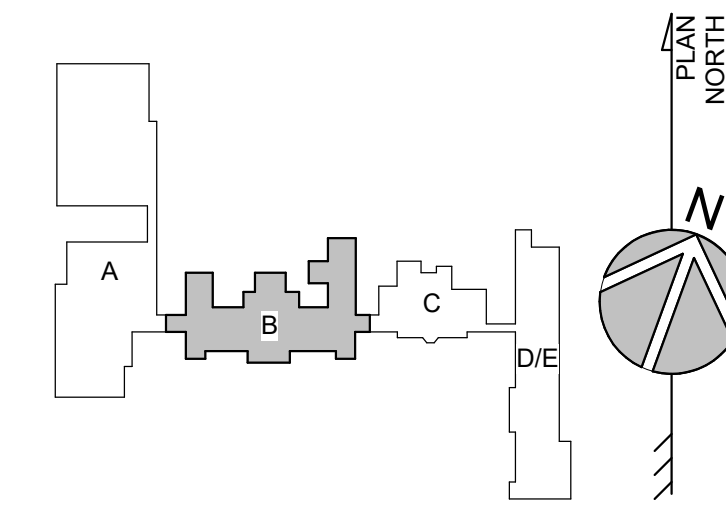
- HAND DRYER TO BE DEMOLISHED. MAINTAIN CIRCUIT FOR REUSE FOR NEW HAND DRYER UNDER NEW WORK.
- FIRE ALARM DEVICE TO BE RELOCATED TO NEW WALL UNDER NEW WORK.
- FIRE ALARM DEVICE TO BE RELOCATED TO ACCOMMODATE CEILING HEIGHT ADJUSTMENT UNDER NEW WORK.

GENERAL NOTES (DEMOLITION):

- REFER TO SHEET E-001 FOR SYMBOLS AND ABBREVIATIONS.
- DASHED-BOLD LINES INDICATE ITEMS TO BE DEMOLISHED (UON). GRAY SOLID LINES INDICATE EXISTING ITEMS TO REMAIN. REMOVE ALL ASSOCIATED BACKBOXES, CONDUIT AND CONDUCTORS FOR DEVICES/FIXTURES, ETC. BEING REMOVED (BACK TO SOURCE), WHETHER INDICATED OR NOT (UON). CONTRACTOR SHALL PATCH AND REPAIR ANY EXISTING WALLS, FLOORS OR CEILINGS WHERE DEVICES ARE SHOWN TO BE REMOVED (PATCH AND REPAIR TO RECEIVE NEW FINISHES - SEE ARCHITECTURAL PLANS). DO NOT ABANDON CABLING OR SUPPORT DEVICES IN PLACE. REFER TO ELECTRICAL DEMOLITION NOTES ON E-001 FOR FURTHER INFORMATION.
- MAINTAIN EXISTING NORMAL AND EMERGENCY LIGHTING CIRCUITS FOR REUSE FOR NORMAL AND EMERGENCY LIGHTS, RESPECTIVELY, UNDER NEW WORK (UON).
- DEVICES INDICATED WITH AN "R" SHALL BE RELOCATED. REMOVE, PROTECT, AND REINSTALL IN NEW LOCATION INDICATED ON NEW WORK PLANS. INTERCEPT AND EXTEND ALL EXISTING CABLING TO NEW LOCATION. CLEAN AND RE-LAMP RELOCATED LUMINAIRES.
- THE CONTRACTOR SHALL MAINTAIN THE CONTINUITY OF EXISTING CIRCUITS THAT CONTAIN DEVICES OR EQUIPMENT THAT ARE TO REMAIN. WHEN DEMOLITION OF AN ELECTRICAL DEVICE (OR CIRCUIT) IS INDICATED ON THE DRAWINGS, THE CONTRACTOR SHALL ENSURE THAT OTHER DEVICES OR EQUIPMENT "UPSTREAM" OR "DOWNSTREAM" ON THE CIRCUITS SHALL REMAIN IN "PRE-DEMOLITION" WORKING ORDER. "LEFT-OVER" CIRCUIT BREAKERS SHALL REMAIN, BE SWITCHED TO OFF POSITION, AND BE LABELED AS SPARES IN THEIR PANELS. PROVIDE NEW TYPEWRITTEN DIRECTORIES FOR ALL PANELS AFFECTED.
- LOCATIONS OF DEVICES, CONNECTIONS, ETC., INDICATED ON THIS DRAWING WERE TAKEN FROM VARIOUS SOURCES. THEY ARE DIAGRAMMATIC ONLY AND ARE SUBJECT TO VARIATION FROM EXISTING CONDITIONS. CERTAIN EXISTING ELEMENTS MAY NOT BE INDICATED AT ALL. THE CONTRACTOR PROPOSING TO DO ANY PART OF THE WORK INDICATED HEREON SHALL VISIT THIS SITE AND DETERMINE TO HIS SATISFACTION THAT THEY MAY COMPLETE ALL WORK REQUIRED FOR THE BID WHICH HE PROPOSES.
- COORDINATE DISPOSAL OF ALL FIXTURES, DEVICES, ETC., (INDICATED FOR DEMOLITION) WITH OWNER. TURN OVER ITEMS REMOVED TO OWNER AT THEIR OPTION.
- COORDINATE WITH OTHER TRADES FOR THE REMOVAL AND/OR RELOCATION OF ELECTRICAL DEVICES AND CONNECTIONS ASSOCIATED WITH THEIR EQUIPMENT.
- PROVIDE TEMPORARY EMERGENCY EXIT LIGHTS AT CONSTRUCTION BARRIERS AS REQUIRED.
- UNUSED/ABANDONED CONDUCTORS DISCOVERED ABOVE ACCESSIBLE CEILINGS SHALL BE REMOVED IN ACCORDANCE WITH NEC REQUIREMENTS.
- EXISTING ELECTRICAL SYSTEMS IN CONFLICT WITH CONSTRUCTION SHALL BE RELOCATED TO PERMIT INSTALLATION OF DEVICES AND EQUIPMENT SHOWN ON PLANS.
- ALL EXISTING PANELS AFFECTED BY THIS CONTRACTOR'S WORK SHALL BE PROVIDED WITH NEW TYPE-WRITTEN PANEL DIRECTORIES AND INSERT SLEEVES. PANEL DIRECTORIES SHALL NOT USE ROOM NAMES OR NUMBERS FROM THESE DRAWINGS. DIRECTORIES SHALL BE DETAILED AND COORDINATED WITH OWNER'S SUITE NUMBERS, FINAL ROOM NUMBERS, IT RACK NAMES, WORKSTATION DESIGNATIONS, ETC. UNUSED BREAKERS SHALL BE IN OFF POSITION.
- SERVICE EQUIPMENT AND ALL AFFECTED PANELBOARDS SHALL BE MARKED WITH UPDATED MAXIMUM AVAILABLE FAULT-CURRENT AT THE EQUIPMENT AND THE DATE THE CALCULATION WAS PERFORMED. APPLY A TYPE-WRITTEN ADHESIVE LABEL WITH WHITE BACKGROUND, 1/2" HIGH BLACK LETTERING.



1 FIRST FLOOR ELECTRICAL DEMOLITION PLAN - AREA B
SCALE: 1/8" = 1'-0"



CENTRAL MIDDLE TO ELEMENTARY SCHOOL INTERIOR RENOVATION

211 DELAWARE AVE
DOVER, DE 19901

ISSUED FOR BIDDING
ISSUED: 09/13/2024

FIRST FLOOR ELECTRICAL DEMOLITION PLAN - AREA B

MARK	DATE	DESCRIPTION
EA	10.07.2024	ADDENDUM 1
DATE:	09.13.2024	
SCALE:	1/8" = 1'-0"	
DRAWN BY:	JHA	PROJ MGR: MO

EA	DATE	DESCRIPTION
EA	10.07.2024	ADDENDUM 1
DATE:	09.13.2024	
SCALE:	1/8" = 1'-0"	
DRAWN BY:	JHA	PROJ MGR: MO

ED-101B
COPYRIGHT © 2021