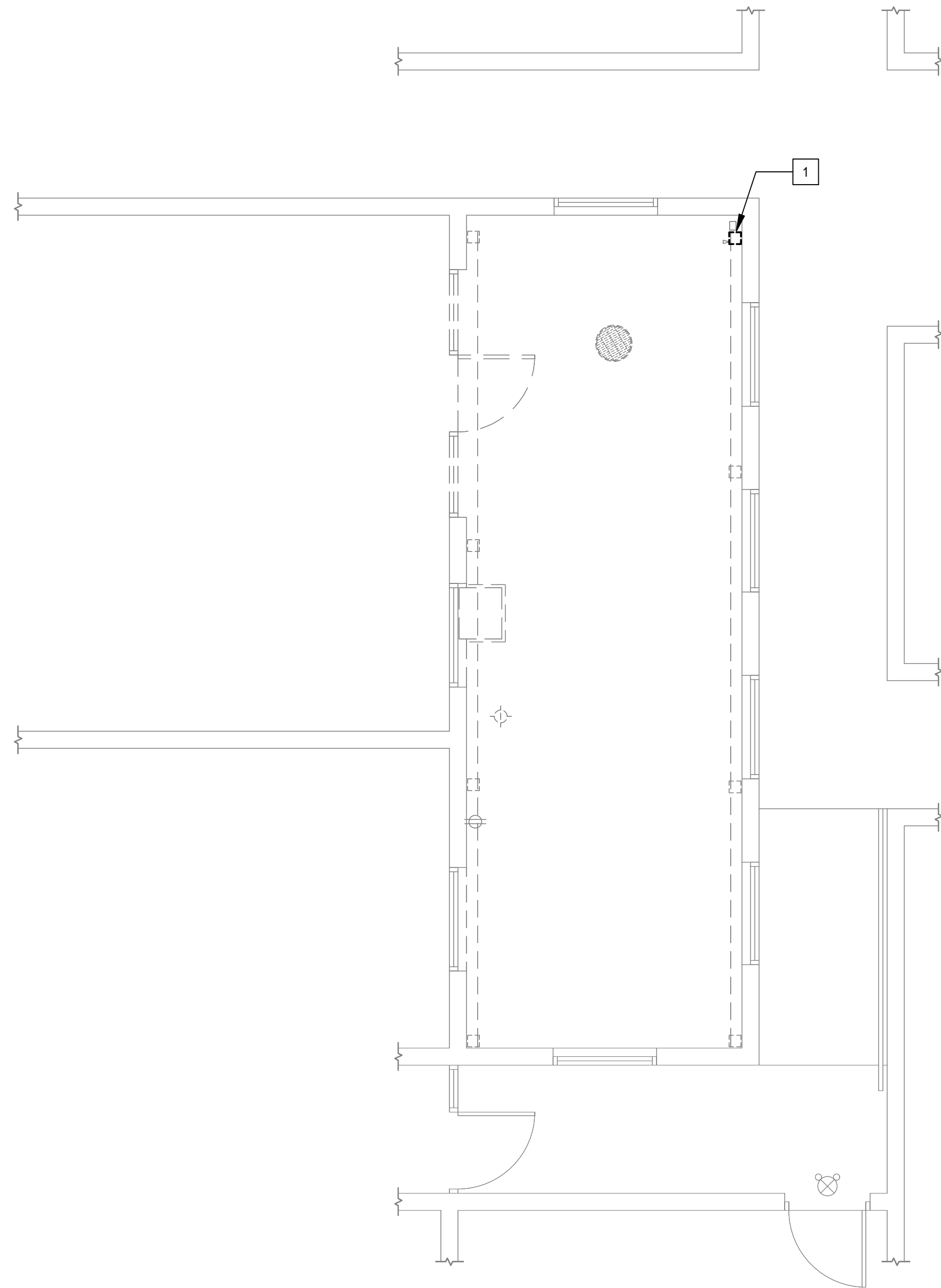
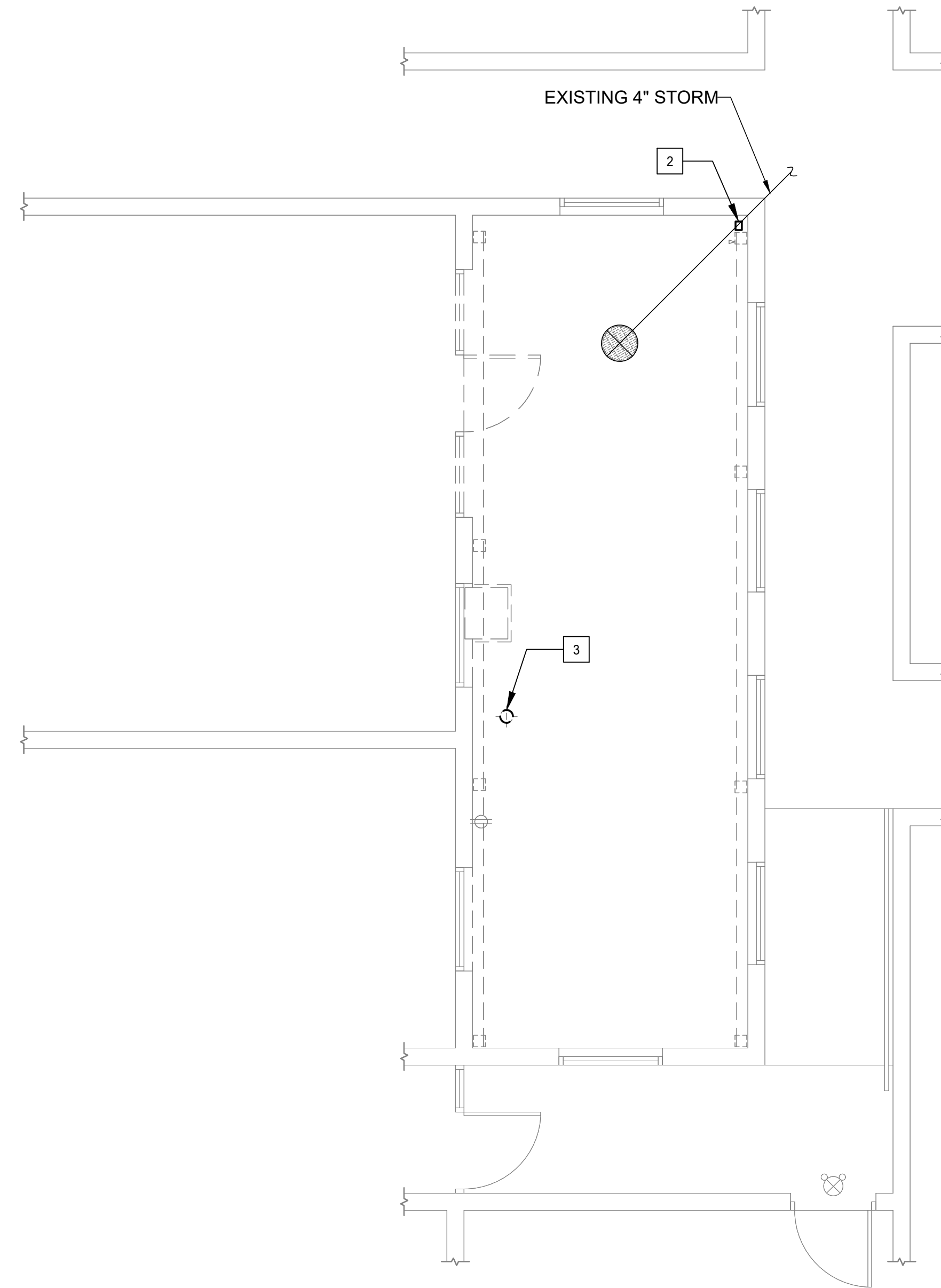


DEMOLITION NOTES	
(APPLIES TO THIS DRAWING)	
1	REMOVE EXISTING HOSE BIB.
2	REMOVE EXISTING DOWNSPOUT.
3	REMOVE EXISTING CLEANOUT, NEW CLEANOUT TO BE INSTALLED.



1 PLUMBING - DOMESTIC DEMOLITION PLAN
 PD-1 SCALE: 1/4"=1'-0"



2 PLUMBING - SANITARY DEMOLITION PLAN
 PD-1 SCALE: 1/4"=1'-0"



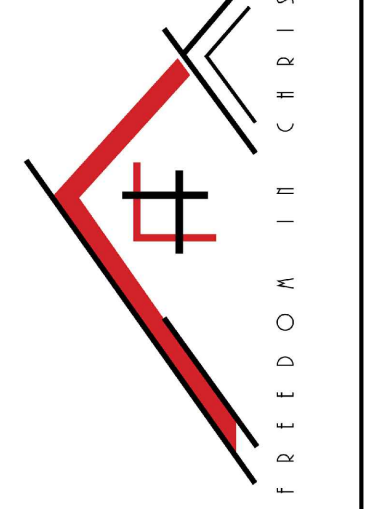
Mechanical | Electrical | Systems Engineering
 PO Box 488, Smyrna, DE 19977 302-659-9090

REVISIONS	BY

PRELIMINARY
 NOT FOR
 CONSTRUCTION

PROFESSIONAL CERTIFICATION:
 I CERTIFY THAT THESE DOCUMENTS WERE
 PREPARED UNDER MY SUPERVISION AND
 APPROVED BY ME, AND THAT I AM A DULY
 LICENSED ARCHITECT UNDER THE LAWS OF
 THE STATE OF DELAWARE, LICENSE
 NUMBER 5242, EXPIRATION DATE 12-31-2024

WM BYLIED JR. ARCHITECT, INC.
 PO Box 104, Kenton, DE 19955
 Phone: 302-653-3550
 Cell: 302-359-3313
 bill@wmbylited.com
 www.wmbylited.com



EIT-OUT FOR
 MMC COURTYARD
 1121 FORREST AVE
 DOVER, DE 19904

PLUMBING -
 DEMOLITION
 PLAN

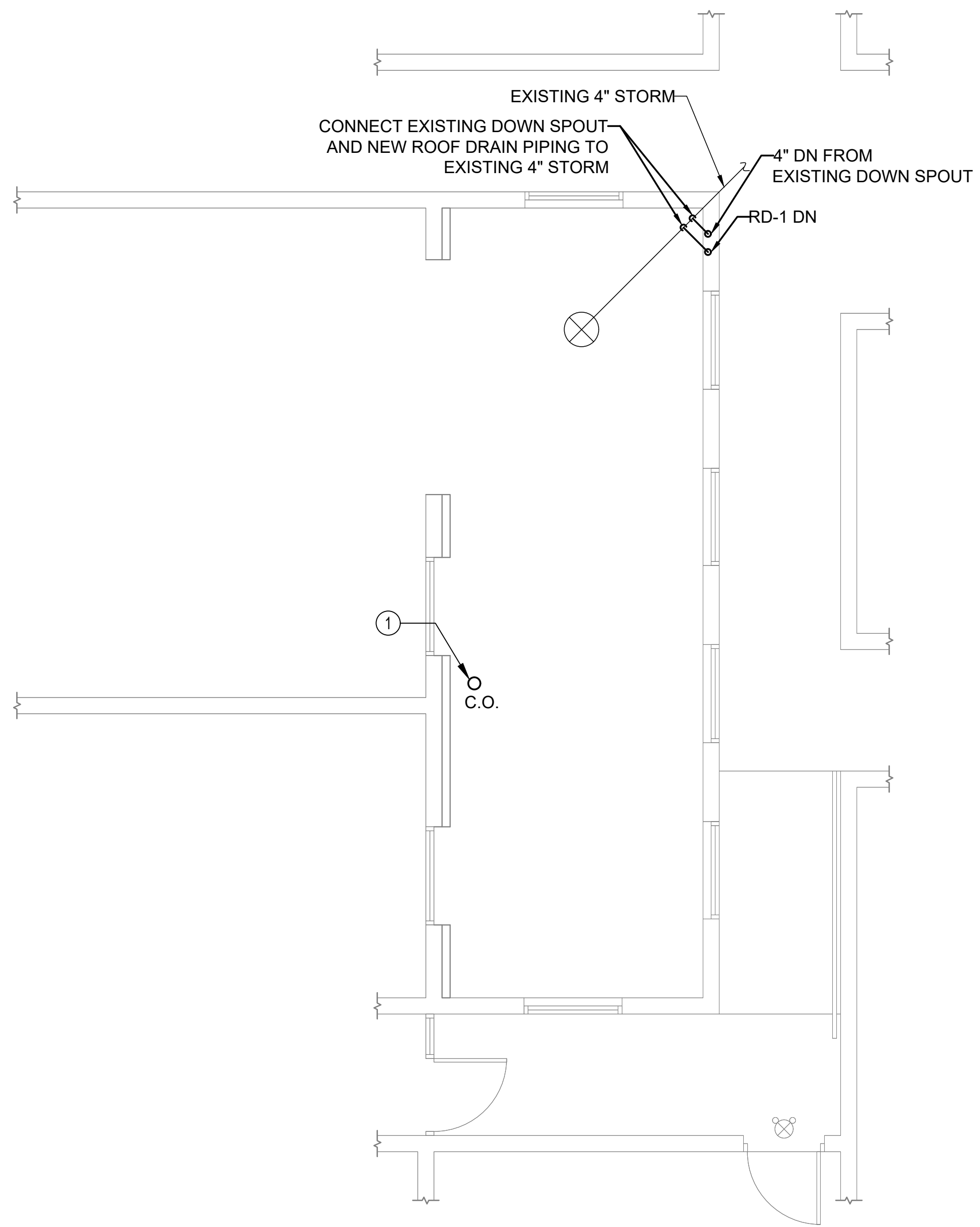
DRAWN	LAU
CHECKED	EAU
DATE	12 SEPTEMBER 2024
SCALE	NOTED
JOB NO.	C1654-0124
SHEET	

PD-1

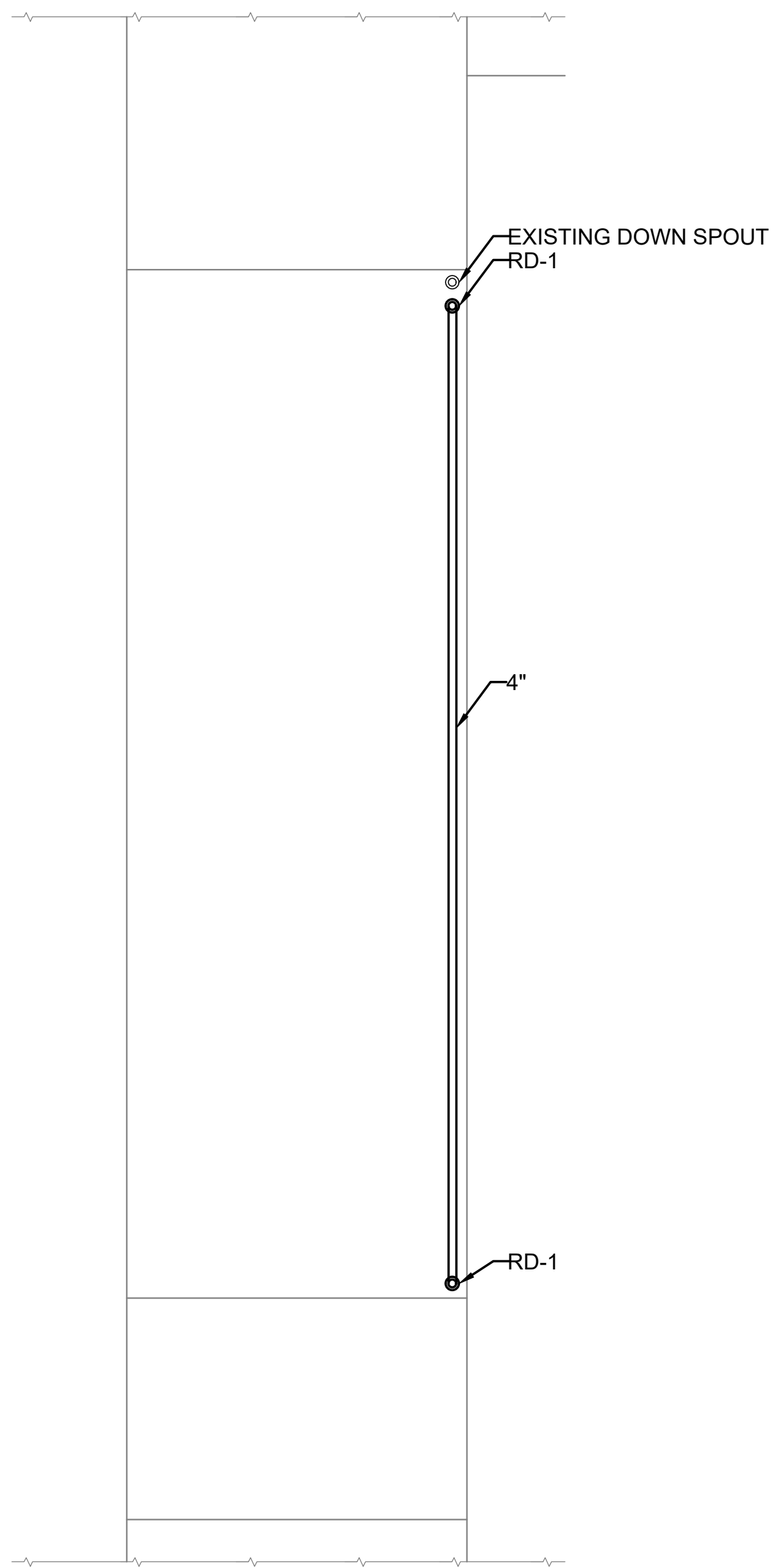
OF SHEETS

DRAWING NOTES
(APPLIES TO THIS DRAWING)

① INSTALL NEW CLEANOUT IN EXISTING LOCATION.
CLEANOUT TYPE INDICATED ON PLUMBING SCHEDULE.



1 PLUMBING - SANITARY NEW WORK PLAN
P-1 SCALE: 1/4"=1'-0"



2 PLUMBING - ROOF NEW WORK PLAN
P-1 SCALE: 1/4"=1'-0"



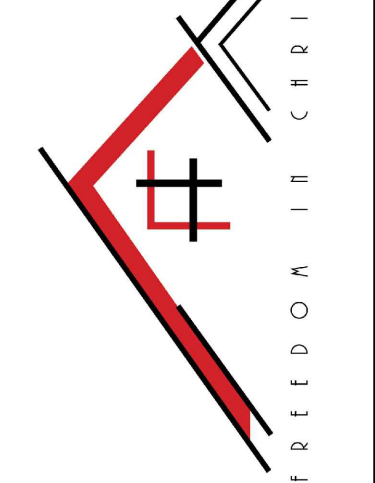
Mechanical | Electrical | Systems Engineering
PO Box 488, Smyrna, DE 19977 302-659-6090

REVISIONS	BY

**PRELIMINARY
NOT FOR
CONSTRUCTION**

PROFESSIONAL CERTIFICATION:
I CERTIFY THAT THESE DOCUMENTS WERE
PREPARED UNDER MY SUPERVISION AND
APPROVED BY ME, AND THAT I AM A DULY
LICENSED ARCHITECT UNDER THE LAWS OF
THE STATE OF DELAWARE, LICENSE
NUMBER 5242, EXPIRATION DATE 12-31-2024

WM BYLIED JR. ARCHITECT, LLC
PO Box 104, Kenton, DE 19955
Phone: 302-653-3550
Cell: 302-359-3313
bill@wmbylited.com
www.wmbylited.com



**EIT-OUT FOR
MMC COURTYARD**
1121 FORREST AVE
DOVER, DE 19904

**PLUMBING -
NEW WORK
PLAN**

DRAWN LAU
CHECKED EAU
DATE 12 SEPTEMBER 2024
SCALE NOTED
JOB NO. C1654-0124
SHEET

P-1

OF SHEETS

GENERAL PLUMBING NOTES

GENERAL

1. CODES: ALL WORK SHALL BE IN ACCORDANCE WITH LOCAL, STATE AND FEDERAL CODES AND REGULATIONS, AND IS SUBJECT TO INSPECTION.
2. MATERIALS AND EQUIPMENT SUBSTITUTIONS: THE BID PRICE SHALL BE BASED ON DRAWINGS.
3. CUTTING AND PATCHING: THE CONTRACTOR SHALL BE RESPONSIBLE FOR ALL CUTTING, CHANNELING, CHASING OR DRILLING AT FLOORS AS NECESSARY FOR PROPER INSTALLATION OR SUPPORT OF DUCTS, PIPING, OR OTHER MECHANICAL OR PLUMBING EQUIPMENT. WORK SHOULD BE COORDINATED WITH ARCHITECT. ANY DAMAGE TO BUILDING, PIPING, EQUIPMENT, PLASTER, WOODWORK OR METAL WORK SHALL BE REPLACED BY SKILLED MECHANICS OF TRADES INVOLVED AT NO EXTRA COST TO THE OWNER.
4. CONTRACTOR SHALL CHECK EXISTING CONDITIONS FOR COMPLIANCE WITH ALL APPLICABLE FEDERAL, STATE AND LOCAL CODES AND REGULATIONS.

PLUMBING SYSTEM

1. THE WORK INCLUDES INSTALLATION OF THE PLUMBING SYSTEM AND PROVIDING NEW MATERIALS, FITTINGS AND ACCESSORIES NECESSARY FOR A COMPLETE FUNCTIONING PLUMBING SYSTEM. THE WORK ALSO INCLUDES ROUGH-IN AND FINAL CONNECTIONS TO EQUIPMENT FURNISHED BY OTHERS. HOOK-UPS, PERMITS AND ALL OTHER EXPENSES RELATED TO A COMPLETE AND FUNCTIONING PLUMBING SYSTEM ARE PART OF THIS SECTION.
2. THE INTENT OF THE DRAWINGS IS TO INDICATE THE GENERAL EXTENT OF WORK REQUIRED FOR THE PROJECT. THE DRAWINGS FOR PLUMBING WORK ARE DIAGRAMMATIC, SHOWING THE GENERAL LOCATION, TYPE, FIXTURES AND EQUIPMENT REQUIRED. THE DRAWINGS SHALL NOT BE SCALED FOR EXACT MEASUREMENTS. REFER TO MANUFACTURER'S STANDARD ROUGH-IN DRAWINGS FOR PLUMBING FIXTURE INSTALLATION REQUIREMENTS. COMPLY WITH ALL APPLICABLE ADA INSTALLATION REQUIREMENTS.
3. COORDINATE WITH THE WORK OF OTHER SECTIONS, EQUIPMENT FURNISHED BY OTHERS, AND WITH THE CONSTRAINTS OF THE EXISTING CONDITIONS OF THE PROJECT SITE.
4. PIPING SYSTEMS - GENERAL: ALL PIPING SHALL BE RUN PARALLEL TO BUILDING LINES AND SUPPORTED AND ANCHORED AS REQUIRED TO FACILITATE EXPANSION AND CONTRACTION. ALL PIPING SHALL BE CONCEALED EXCEPT IN UNFINISHED SPACES. INSTALL AS REQUIRED TO MEET ALL CONSTRUCTION CONDITIONS AND TO ALLOW FOR INSTALLATION OF OTHER WORK SUCH AS DUCTS AND ELECTRICAL CONDUIT. AT ALL CONNECTIONS BETWEEN FERROUS PIPING AND NONFERROUS PIPING, PROVIDE AN ISOLATING DIALECTIC UNION. ALL HANGERS SHALL BE COMPATIBLE WITH PIPING MATERIAL TO PREVENT CORROSION.
5. PROVIDE ALL FITTINGS, ACCESSORIES, OFFSETS, AND MATERIALS NECESSARY TO FACILITATE THE PLUMBING SYSTEM'S FUNCTIONING AS INDICATED BY THE DESIGN AND THE EQUIPMENT INDICATED.
6. PROVIDE WATER SUPPLIES AND WASTE TRAPS AS NEEDED.
7. SEWER AND WASTE PIPING: WASTE DRAINAGE PIPING SHALL BE STANDARD WEIGHT PVC UNLESS OTHERWISE NOTED. ALL DRAINAGE PIPING 2-1/2" OR LESS SHALL BE UNIFORMLY PITCHED AT 1/4" PER FOOT UNLESS OTHERWISE REQUIRED BY EXISTING CONDITIONS, OR INDICATED ON THE DRAWINGS. ALL DRAINAGE PIPING 3" TO 6" SHALL BE UNIFORMLY PITCHED AT 1/8" PER FOOT UNLESS REQUIRED BY EXISTING CONDITIONS OR INDICATED ON THE DRAWINGS. 8" AND LARGER SHALL BE PITCHED AT 1/16" PER FOOT.
8. VENTS: PROVIDE A COMPLETE VENT RISER SYSTEM OF STANDARD WEIGHT PVC PLASTIC AS APPLICABLE. THE VENT SYSTEM SHALL BE CARRIED THROUGH THE ROOF WITH APPROPRIATE FLASHING.
9. CLEANOUTS: PROVIDE CLEANOUTS AT THE END OF EACH HORIZONTAL RUN, AND AT THE BASE OF ALL VERTICAL WASTE AND DRAIN PIPES. CLEANOUTS SHALL BE OF THE SAME SIZE AS THE PIPES THEY SERVE. CONFORMING TO CODE REQUIREMENTS. PROVIDE SUITABLE WALL OR FLOOR CLEANOUTS WITH ACCESSORIES TO OBSCURE FROM VIEW. ALL FLOOR CLEANOUTS SHALL BE FLUSH WITH FLOOR.
10. WATER DISTRIBUTION PIPING: LAYOUT WATER PIPING SO THAT THE ENTIRE SYSTEM CAN BE DRAINED. HOT AND COLD WATER PIPING SHALL BE 1/2" MIN. TYPE L COPPER TUBING WITH WROUGHT COPPER FITTINGS AND SWEAT OR PRESSED CONNECTIONS, EXCEPT WHERE SPECIFICALLY STATED OTHERWISE. PROVIDE MIN. 16" HIGH FULL AIR CHAMBER AT EACH FIXTURE STOP. INSTALL CHROME PLATED BRASS ESCUTCHEON PLATES AT ALL PENETRATIONS THROUGH FINISHED SURFACES (INCLUDING CABINET INTERIORS). USE LEAD FREE (EQUAL TO OR LESS THAN 0.2% LEAD) SOLDER CONFORMING TO ASTM B 32 TIN-ANTIMONY SOLDER, 95/5 FOR ALL SWEAT FITTINGS OF COPPER PIPING SYSTEM.
11. PIPE INSULATION: PROVIDE (FOR HOT & COLD) 1/2" (COLD) 1" (HOT) SELF-ADHESIVE UNICELLULAR FOAM PIPE INSULATION WITH PRE-FORMED PVC FITTING COVERS - EQUAL TO SELF-ADHESIVE ARMSTRONG 2000 WITH K FACTOR OF 0.27 AT 100 DEGREES MEAN TEMPERATURE.
12. SHUTOFF VALVES, SHALL BE PROVIDED FOR SERVICE TO EACH PLUMBING FIXTURE OR OTHER EQUIPMENT ITEM, TO FACILITATE ISOLATION FOR REPAIR OR REPLACEMENT. VALVES SHALL BE BALL TYPE, CHROME-FINISHED BRONZE, TEFLON SEATS AND PACKING, 400 LB. W.O.G.,
13. ACCESS PANELS SHALL BE PROVIDED WHERE CONCEALED CONTROL DEVICES, VALVES ETC. ARE CONCEALED WITHIN WALLS. WHERE ACCESS FOR ADJUSTMENT AND MAINTENANCE IS POSSIBLE. COORDINATE LOCATION WITH OWNER.
14. SUPPLIES AND TRAPS: PROVIDE BARRIER-TYPE TRAP SEALS UNLESS OTHERWISE SPECIFIED AND/OR SUPPLIES INSTALLED AS CLOSE AS POSSIBLE TO ALL PLUMBING FIXTURES, DRAINS AND EQUIPMENT FURNISHED BY OTHERS, HAVING A WASTE CONNECTION, OR REQUIRING WATER SERVICE. EXPOSED TRAPS AND SUPPLIES IN EXPOSED AREAS (INCLUDING CABINET INTERIORS) SHALL BE CHROMIUM PLATED BRASS, WITH CHROME PLATED ESCUTCHEON PLATES. REMOVE ALL MARKING FROM ALL PIPING WHEN INSTALLATION IS COMPLETE.
15. INSTALLATION: THOROUGHLY CLEAN ITEMS BEFORE INSTALLATION. CAP PIPE OPENINGS TO EXCLUDE DIRT UNTIL FIXTURES ARE INSTALLED AND FINAL CONNECTIONS HAVE BEEN MADE. PROCEED AS RAPIDLY AS CONSTRUCTION WILL PERMIT. SET FIXTURES LEVEL AND IN PROPER ALIGNMENT. INSTALL SUPPLIES IN PROPER ALIGNMENT WITH FIXTURES. INSTALL SILICONE SEALANT BETWEEN FIXTURES AND ADJACENT MATERIAL, FOR SANITARY JOINT, AND OMIT ESCUTCHEON.
16. TEST WATER SYSTEM UNDER 150 PSIG HYDROSTATIC PRESSURE, FOR FOUR (4) HOURS MINIMUM, OR AS REQUIRED BY CODE. WHEN TESTING INDICATES MATERIALS OR WORKMANSHIP IS DEFICIENT, REPLACE OR REPAIR AS REQUIRED, AND REPEAT TEST UNTIL STANDARDS ARE ACHIEVED.

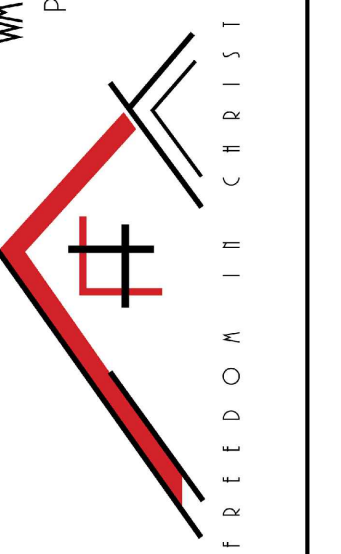
PLUMBING FIXTURE SCHEDULE						
ITEM	DESCRIPTION	CW	HW	SOIL WASTE	TRAP	SPECIFICATIONS/REMARKS
RD-1	ROOF DRAIN	---	---	3"	---	JAY R SMITH LARGE GENERAL PURPOSE ROOF DRAIN WITH LOW PROFILE DOME. MODEL # 1010
CO	CLEANOUT	---	---	4"	---	JAY R. SMITH MODEL 4021S FINISHED FLOOR CLEANOUT WITH "TWIST TO FLOOR" ADJUSTABLE TOPS. POLISHED BRONZE MATERIAL WITH A GASKET SEAL AND BRONZE PLUG.

REVISIONS	BY

**PRELIMINARY
NOT FOR
CONSTRUCTION**

PROFESSIONAL CERTIFICATION:
I CERTIFY THAT THESE DOCUMENTS WERE
PREPARED UNDER MY SUPERVISION AND
APPROVED BY ME, AND THAT I AM A DULY
LICENSED ARCHITECT UNDER THE LAWS OF
THE STATE OF DELAWARE, LICENSE
NUMBER 5242, EXPIRATION DATE 12-31-2024

WIMBYLED JR. ARCHITECT, INC.
PO Box 104, Kenton, DE 19955
Phone: 302-653-3550
Cell: 302-359-3313
bill@wimbyledjrarchitect.com
www.wimbyledjrarchitect.com



**EIT-OUT FOR
MMC COURTYARD
1121 FORREST AVE
DOVER, DE 19904**

**PLUMBING -
SCHEDULES &
NOTES**



**DRAWN
LAU
CHECKED
EAU
DATE
12 SEPTEMBER 2024
SCALE
NOTED
JOB NO.
C1654-0124
SHEET**

P-2

OF SHEETS

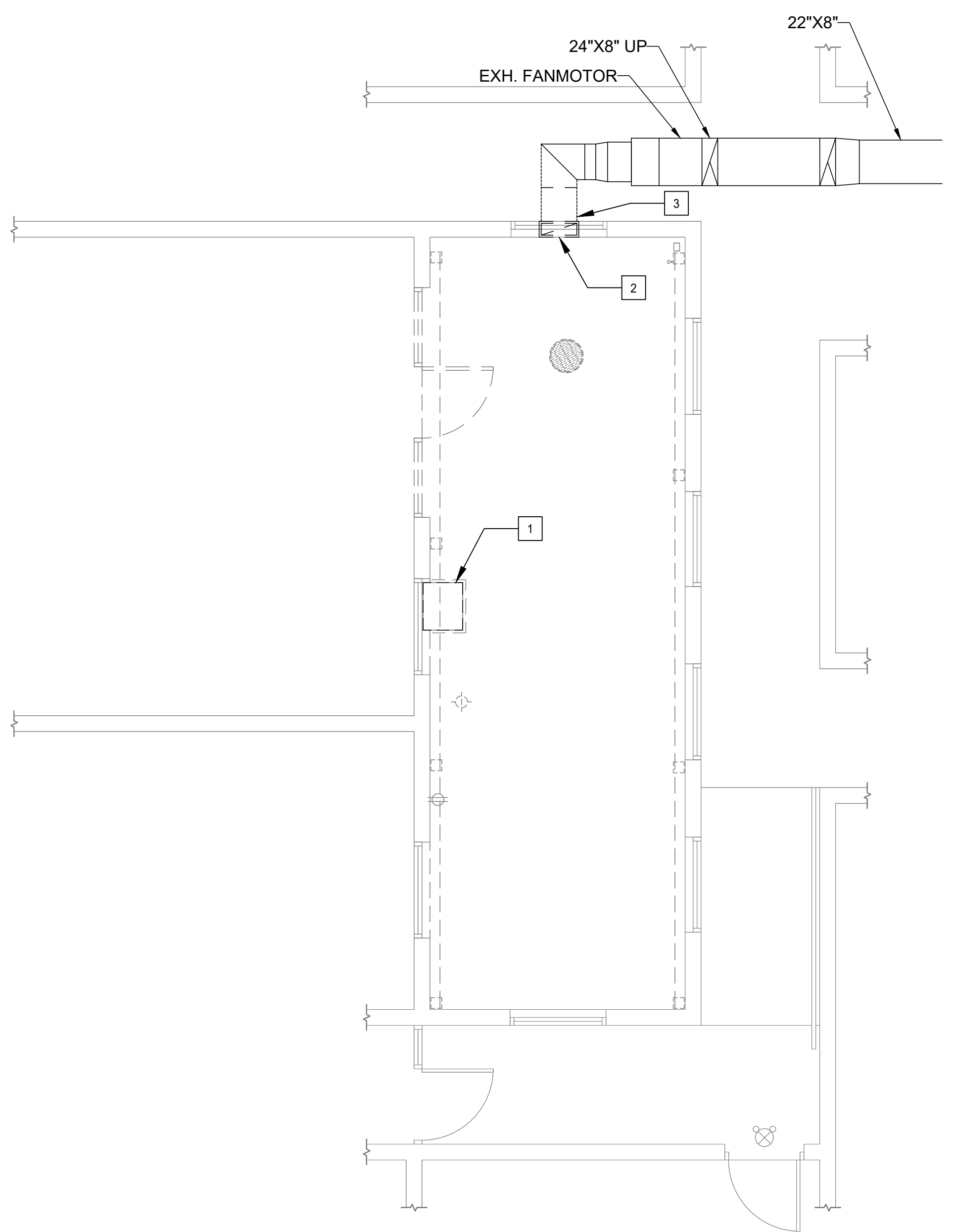


Mechanical | Electrical | Systems Engineering
PO Box 488, Smyrna, DE 19977 302-659-9090

REVISIONS	BY

DEMOLITION NOTES
(APPLIES TO THIS DRAWING)

- 1 REMOVE EXISTING HVAC UNIT.
- 2 REMOVE & CAP EXISTING 18"x6" EXHAUST GRILLE.
- 3 REMOVE & CAP EXISTING 18"x6" DUCT WORK.

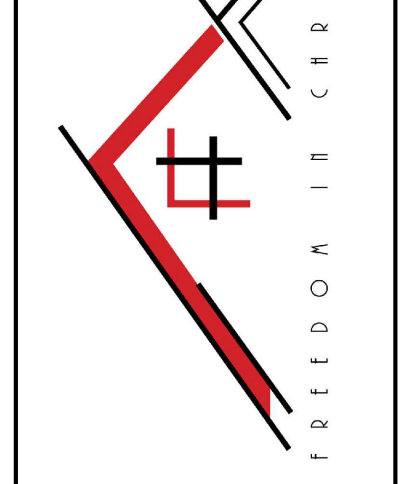


1 **MECHANICAL - HVAC DEMOLITION PLAN**
MD-1 SCALE: 1/4"=1'-0"

**PRELIMINARY
NOT FOR
CONSTRUCTION**

PROFESSIONAL CERTIFICATION:
I CERTIFY THAT THESE DOCUMENTS WERE
PREPARED UNDER MY SUPERVISION AND
APPROVED BY ME, AND THAT I AM A DULY
LICENSED ARCHITECT UNDER THE LAWS OF
THE STATE OF DELAWARE, LICENSE
NUMBER 5242, EXPIRATION DATE 12-31-2024

WM BYLIED JR. ARCHITECT, INC
PO Box 104, Kenton, DE 19955
Phone: 302-653-3550
Cell: 302-359-3313
bill@wmbyljed.com
www.wmbyljed.com



**EIT-OUT FOR
MMC COURTYARD**
1121 FORREST AVE
DOVER, DE 19904

**MECHANICAL
= HVAC
DEMOLITION
PLAN**



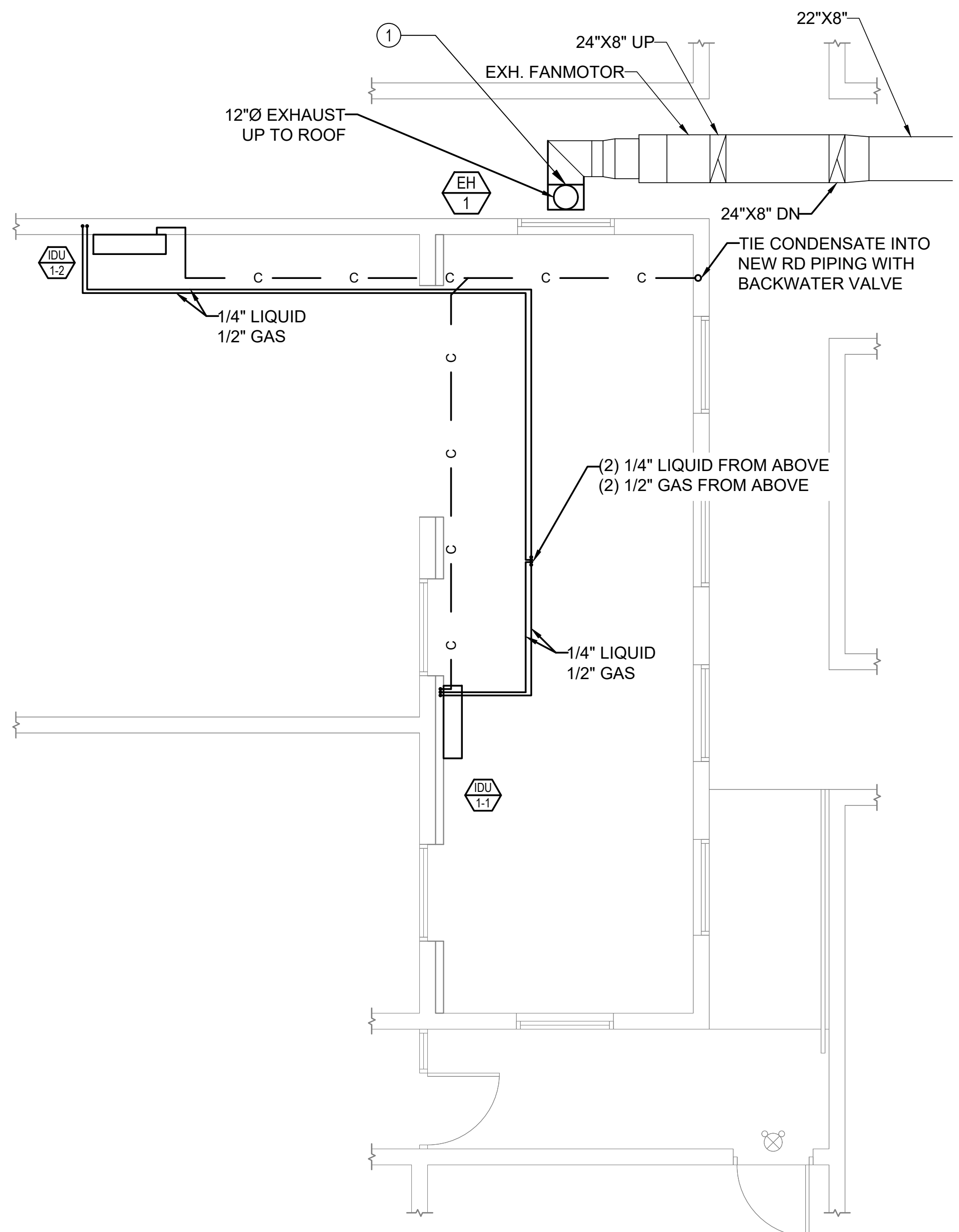
Mechanical | Electrical | Systems Engineering
PO Box 488, Smyrna, DE 19977 302-659-9090

**DRAWN
LAU
CHECKED
EAU**
DATE
12 SEPTEMBER 2024
SCALE
NOTED
JOB NO.
C1654-0124
SHEET

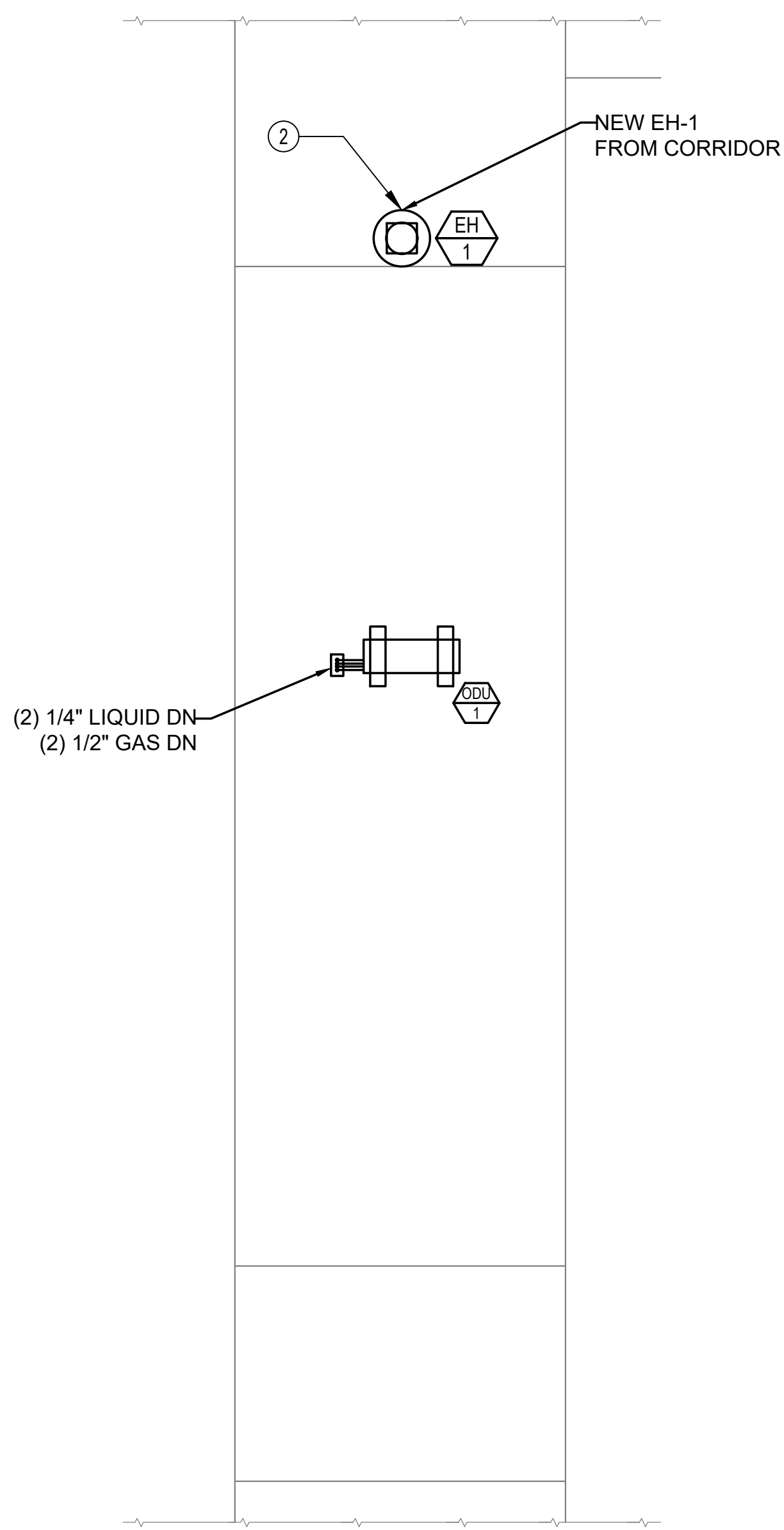
MD-1

OF SHEETS

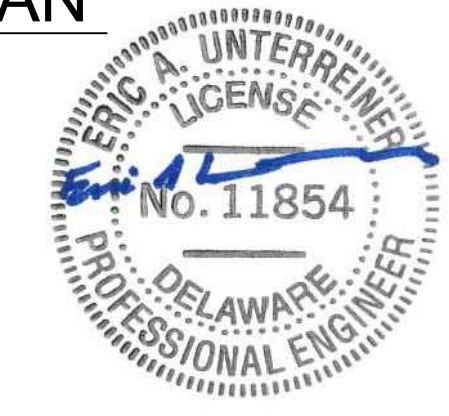
DRAWING NOTES (APPLIES TO THIS DRAWING)	
①	INSTALL NEW 12"Ø EXHAUST FAN DUCT..
②	INSTALL NEW ROOF EXHAUST HOOD.



1 MECHANICAL - HVAC NEW WORK PLAN
M-1 SCALE: 1/4"=1'-0"



2 MECHANICAL - HVAC NEW WORK ROOF PLAN
M-1 SCALE: 1/4"=1'-0"



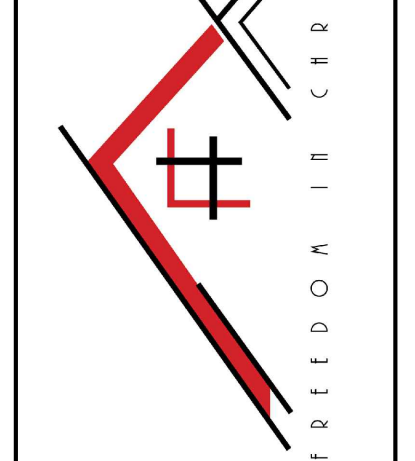
Mechanical | Electrical | Systems Engineering
PO Box 488, Smyrna, DE 19977 302-659-6090

REVISIONS	BY

PRELIMINARY
NOT FOR
CONSTRUCTION

PROFESSIONAL CERTIFICATION:
I CERTIFY THAT THESE DOCUMENTS WERE
PREPARED UNDER MY SUPERVISION AND
APPROVED BY ME, AND THAT I AM A DULY
LICENSED ARCHITECT UNDER THE LAWS OF
THE STATE OF DELAWARE, LICENSE
NUMBER 5242, EXPIRATION DATE 12-31-2024

WM BYLIED JR. ARCHITECT, LLC
PO Box 104, Kenton, DE 19955
Phone: 302-653-3550
Cell: 302-359-3313
bill@wmbyljed.com
www.wmbyljed.com



EIT-OUT FOR
MMC COURTYARD
1121 FORREST AVE
DOVER, DE 19904

MECHANICAL
= HVAC NEW
WORK
PLAN

DRAWN LAU
CHECKED EAU
DATE 12 SEPTEMBER 2024
SCALE NOTED
JOB NO. C1654-0124
SHEET

M-1
OF SHEETS

mitsubishi electric trane hvac us: city multi vrf indoor unit schedule

System Tag	Room Name	Tag Reference	Model	Type	Nominal Cooling Capacity (BTU/h)	Nominal Heating Capacity (BTU/h)	Cooling Design Entering Temp DB/WB (°F) / [Water in temp]	Heating Design Entering Temp DB/WB (°F) / [Water in temp]	Corrected Capacity		Heating Diversity Full/Partial (See Note 5, 6)	Heating Capacity (BTU/h)	Estimated Cooling Coil LAT (°F) / [LWT]	Estimated Heating Coil LAT (°F) / [LWT]	Refrig Pipe Dim Liquid/Suction (inch)	Fan Speed Setting	Peak Fan Airflow (cfm) / [Design gpm G(US)/min]	Max Fan ESP Setting 208V/230V (IN WG)	Voltage / Phase	Power Cooling 208V/230V (kW)	Power Heating 208V/230V (kW)	Electrical MCA/MFS	Condensate Removal Rate (gal/hr)	Notes / Options
									Cooling Diversity Full/Partial (See Note 5, 6)	Cooling Total Capacity (BTU/h)														
ODU-1		IDU-1-1	MSZ-FS12NA-U1	Wall -Mounted	11,200	11,000	80.0/67.0	70	FULL DEMAND	11,367.7	9,692.8	FULL DEMAND	5,500.4	59.8	81.2	1/4 / 3/8	HIGH		454			Powered by Outdoor	0.15	1, 2, 3, 4
ODU-1		IDU-1-2	MSZ-GL18NA-U1	Wall -Mounted	16,000	16,600	80.0/67.0	70	FULL DEMAND	16,239.6	15,071.5	FULL DEMAND	8,300.6	58.0	81.9	1/4 / 1/2	HIGH		646			Powered by Outdoor	0.04	1, 2, 3, 4

Notes & Options:

- Nominal cooling capacities are based on indoor coil EAT of 80/67°F (DB/WB), outdoor of 95°F (DB)
 - Nominal heating capacities are based on indoor coil EAT of 70°F (DB), outdoor of 43°F (WB)
 - See outdoor unit schedule for outdoor ambient conditions, connected capacity, and other factors associated with corrected capacities
 - See schematic piping/control diagram for indication of required indoor unit remote controllers, system controllers, and integration devices.
 - Full demand corrected capacity includes de-rate associated with indoor vs. outdoor connected capacity indicated on outdoor unit schedule for associated system.
- Partial corrected capacity assumes sufficient diversity exists such that the connected capacity de-rate does not apply.
 It is the designer's responsibility to ensure "Diamond System Builder" is set in the appropriate output capacity setting (full demand/partial demand) prior to generating this schedule.
 6 It is recommended to always base heating corrected capacity on full demand.

mitsubishi electric trane hvac us: city multi vrf outdoor unit schedule

System Tag	Tag Reference	M-NET Address	Model Number	Modules	Nominal Cooling Capacity (BTU/h)	Nominal Heating Capacity (BTU/h)	Cooling Efficiency (IEER [SEER])	EER2 [SEER2]	Heating COP @ 47°F [HSPF]	Nom System Connected Capacity (% of NOM)	Design Cooling Outdoor Temp DB (°F)	Design Heating Outdoor Temp WB (°F)	Max Pipe Length from BC or 1st Joint (feet)	Refrig Pipe Dim High/Low Pressure (inch) (See Note 4)	Corrected Cooling Total Capacity (BTU/h)	Corrected Heating Capacity (BTU/h)	Preliminary Added Field Charge (See Note 5)	Electrical-Per Module 208/230 or [460V]			Notes / Options	
																		Voltage / Phase	MCA 208/230 or [460V]	RFS		MOCP
ODU-1	ODU-1	N/A	MXZ-3C30NA		28,400	28,600	10.6 [19(Non-Ducted), 17.6(Mix), 16.2(Ducted)]	0 []	3.9 [10.6(Non-Ducted), 10.1(Mix), 9.6(Ducted)]	100.0 %	92.0	9.9	18.9	-- / --	27,607.3	13,801.0	0.0	208/230V / 1-phase	22.1		25	1, 2, 3, 4, 5

Notes & Options:

- Nominal cooling capacities are based on indoor coil EAT of 80/67°F (DB/WB), outdoor of 95°F (DB)
- Nominal heating capacities are based on indoor coil EAT of 70°F (DB), outdoor of 43°F (WB)
- Efficiency values for IEER, IEER, COP are based on AHRI 1230 test method for mixture of ducted & non-ducted indoor units.
- For systems with multiple modules, refrigerant pipe dimensions indicate total system combined piping downstream of module twinning.
- Added field charge listed is in addition to factory charge, this must be updated based upon final as-built piping layout.

EH-1 EQUIPMENT SCHEDULE

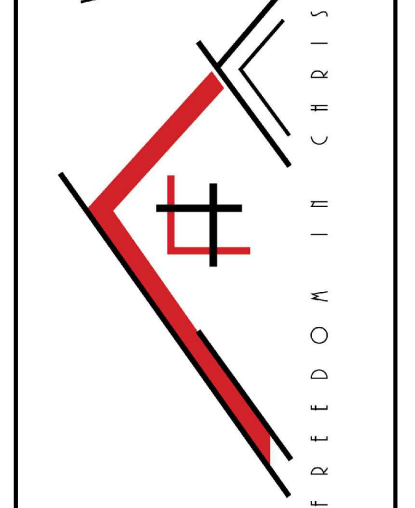
Tag	Qty	GreenHeck Model	Model Size (in.)		Curb Cap		Weight (lb)	Qty	Volume (CFM)	SP (in. wg)	Birdscreen Material	Unit Material
					Width (in.)	Length (in.)						
EH-1	1	GRSR-12	12	22	22	22	10	1	450	0.037	Galvanized	Aluminum

REVISIONS	BY

**PRELIMINARY
NOT FOR
CONSTRUCTION**

PROFESSIONAL CERTIFICATION:
I CERTIFY THAT THESE DOCUMENTS WERE PREPARED UNDER MY SUPERVISION AND APPROVED BY ME, AND THAT I AM A DULY LICENSED ARCHITECT UNDER THE LAWS OF THE STATE OF DELAWARE, LICENSE NUMBER 5242, EXPIRATION DATE 12-31-2024

WYBYLIED JR. ARCHITECT, LLC
 PO Box 104, Kenton, DE 19955
 Phone: 302-653-3550
 Cell: 302-359-3313
 bill@wybyliedjr.com
 www.wybyliedjr.com

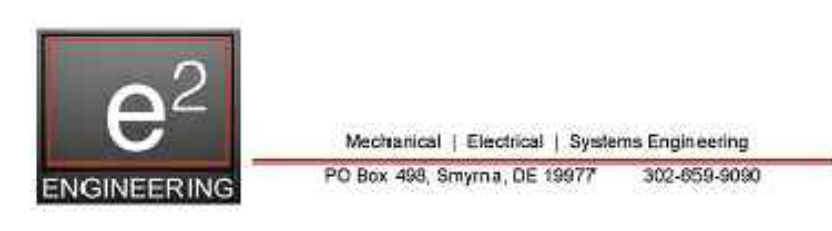


**EIT-OUT FOR
MMC COURTYARD
1121 FORREST AVE
DOVER, DE 19904**

**MECHANICAL
-SCHEDULES**

**DRAWN
LAU
CHECKED
EAU
DATE
12 SEPTEMBER 2024
SCALE
NOTED
JOB NO.
C1654-0124
SHEET**

M-2

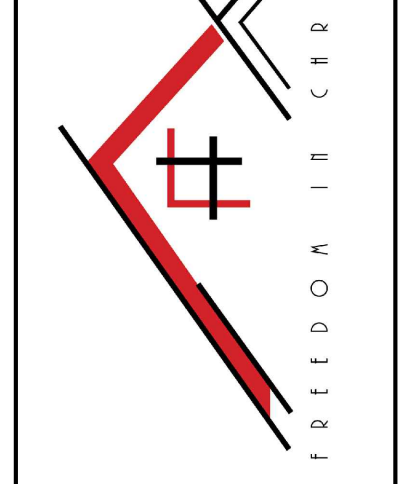


REVISIONS	BY

**PRELIMINARY
NOT FOR
CONSTRUCTION**

PROFESSIONAL CERTIFICATION:
I CERTIFY THAT THESE DOCUMENTS WERE
PREPARED UNDER MY SUPERVISION AND
APPROVED BY ME, AND THAT I AM A DULY
LICENSED ARCHITECT UNDER THE LAWS OF
THE STATE OF DELAWARE, LICENSE
NUMBER 5242, EXPIRATION DATE 12-31-2024

WM BYLIED JR. ARCHITECT, LLC
PO Box 104, Kenton, DE 19955
Phone: 302-653-3550
Cell: 302-359-3313
bill@wmbyljed.com
www.wmbyljed.com



**EIT-OUT FOR
MMC COURTYARD
1121 FORREST AVE
DOVER, DE 19904**

**MECHANICAL
-NOTES &
DIAGRAMS**

**DRAWN
LAU
CHECKED
EAU
DATE
12 SEPTEMBER 2024
SCALE
NOTED
JOB NO.
C1654-0124
SHEET**

M-2
OF SHEETS

MECHANICAL NOTES

- GENERAL NOTES:** THESE GENERAL NOTES APPLY TO ALL MECHANICAL DRAWINGS.
- CODES:** ALL WORK SHALL CONFORM WITH THE 2015 INTERNATIONAL MECHANICAL CODE, 2015 INTERNATIONAL ENERGY CONSERVATION CODE, 2015 INTERNATIONAL FUEL GAS CODE, NFPA, NEC, NEW CASTLE COUNTY DELAWARE AND STATE OF DELAWARE CODES, ORDINANCES AND REGULATIONS AND SHALL MEET OR EXCEED THE LATEST VERSIONS OF ASHRAE & SMACNA RECOMMENDATIONS.
- SYMBOLS:** NOT ALL SYMBOLS, ABBREVIATIONS AND NOTES MAY BE USED FOR THIS PROJECT.
- COORDINATION:** WORK SHALL BE COORDINATED WITH ALL OTHER TRADES. ROUTING OF DUCTWORK AND PIPING ARE INDICATED TO SHOW GENERAL INTENT. CLEARANCES BETWEEN CEILING AND STRUCTURE ARE MINIMAL IN SEVERAL LOCATIONS. COORDINATE WITH OTHER TRADES PRIOR TO FABRICATION OF WORK.
- INTERFERENCE:** PROVIDE OFFSETS AND TRANSITIONS IN DUCTWORK AND PIPING AS REQUIRED TO AVOID INTERFERENCE AT NO ADDITIONAL COST TO THE OWNER.
- FINAL CONNECTIONS:** VERIFY ALL EQUIPMENT CONNECTIONS WITH MANUFACTURER'S CERTIFIED DRAWINGS. PROVIDE TRANSITIONS TO FINAL TO EQUIPMENT. MAKE FINAL CONNECTION TO EQUIPMENT, UNLESS OTHERWISE INDICATED. FIELD VERIFY ALL DIMENSIONS BEFORE FABRICATION OF WORK.
- SUPPLY AND RETURN LOCATIONS:** EXACT LOCATION OF DIFFUSERS, GRILLES AND REGISTERS SHALL BE COORDINATED WITH THE REFLECTED CEILING PLANS BEFORE INSTALLATION. PROVIDE SYMMETRY WITH THE ROOM LIGHTING SYSTEMS. IN CASE OF ANY CONFLICT CONTACT THE DESIGN TEAM.
- SUPPLY AND RETURN FRAMES:** VERIFY DIFFUSER, GRILLE AND REGISTER MOUNTING FRAME TYPES WITH THE CEILING TYPES. MATCH FRAME TYPE WITH CEILING CONFIGURATION.
- ACCESS PANELS:** PROVIDE ACCESS DOORS OR PANELS FOR DUCT-MOUNTED FIRE OR FIRE & SMOKE DAMPERS, SMOKE DETECTORS, VALVES AND OTHER CONCEALED EQUIPMENT.
- DUCTWORK:** DUCT FITTINGS ARE INDICATED SYMBOLICALLY. REFER TO DETAILS FOR CONFIGURATION OF FITTINGS, TAPS AND CONNECTIONS. DUCT CONSTRUCTION SHALL COMPLY WITH SMACNA CONSTRUCTION STANDARDS (LATEST EDITION).
- FLEXIBLE DUCTWORK:** FLEXIBLE DUCTWORK SHALL NOT EXCEED FIVE (5) FEET IN LENGTH. FLEXIBLE DUCTWORK SHALL BE PREFABRICATED INSULATED TYPE WITH VAPOR BARRIER. TOTAL LENGTH SHALL NOT EXCEED 8'-0".
- DUCT DIMENSIONS:** ALL DUCT SIZES INDICATED ARE INSIDE CLEAR DIMENSIONS.
- DUCTWORK SHOP DRAWINGS:** PROVIDE DUCTWORK SHOP DRAWINGS INDICATING DUCT ROUTING, SIZES AND ELEVATIONS FOR COORDINATION WITH OTHER TRADES.
- WEIGHT LOADS:** CONCENTRATE LOADS AT JOIST/BEAM LOCATIONS. PROVIDE ANGLE BRACES WHERE CONCENTRATED LOADS OCCUR AT OTHER LOCATIONS.
- DUCT TURNS:** USE RADIUS DUCTWORK ELBOWS WHERE POSSIBLE. PROVIDE TURNING VANES FOR SQUARE ELBOWS IN SUPPLY AIR DUCTWORK AND AS INDICATED.
- NATURAL GAS PIPING:** PROVIDE SCH 40 METALLIC PIPING FOR OUTDOOR, CCST PIPING FOR INDOOR AND PE FOR UNDERGROUND PIPING. SIZED PER THE 2018 IFGC. FIELD VERIFY PIPE SIZES AND LENGTHS WITH MANUFACTURER.
- CONDENSATE PIPING:** ALL CONDENSATE PIPING SHALL BE SCH 40 PVC. INSULATE WITH 3/4" CLOSED CELL INSULATION.
- FIRE PROTECTION:** FIRE-SAFE PIPE AND DUCTWORK PENETRATIONS OF ALL FIRE RATED AND SMOKE RESISTIVE CONSTRUCTION IN ACCORDANCE WITH NFPA 90A.
- LIFE SAFETY:** COORDINATE WITH LIFE-SAFETY PLANS.
- CONTROLS:** MOUNT AND WIRE SENSORS AND THERMOSTATS TO CONTROL HEATING AND COOLING SYSTEMS AT 48" AFF (ADA).
- EQUIPMENT INSTALLATION:** INSTALL ALL EQUIPMENT LEVEL AND PLUMB. PROVIDE BLOCKING AND MOUNTING HARDWARE AS REQUIRED.
- EXPOSED PIPE INSULATION:** PROVIDE UV PROTECTIVE COATING/COVERING ON ALL ELASTOMERIC PIPE INSULATION WHERE EXPOSED TO SUNLIGHT.
- DUCT INSULATION:** ALL DUCTS SHALL BE EXTERNALLY INSULATED WITH R-6 INSULATION AND R-8 INSULATION WHERE LOCATED OUTSIDE THE BUILDING ENVELOPE. INSULATE EXHAUST DUCTS FROM SHOWER AREAS WHERE LOCATED OUTSIDE THE BUILDING ENVELOPE.
- HARDWARE:** PROVIDE ALL REQUIRED HARDWARE, EQUIPMENT RAILS AND ROOF CURBS TO SECURELY MOUNT ALL OUTDOOR EQUIPMENT.
- COMMISSIONING:** THE CONTRACTOR SHALL COMMISSION THE HVAC SYSTEMS BASED ON MANUFACTURERS RECOMMENDATIONS AND A PLAN DEVELOPED BY THE CONTRACTOR AND APPROVED BY THE OWNER WHICH WILL INCLUDE BALANCING OF THE AIR SYSTEMS, TESTING ALL CONTROLS AND EQUIPMENT.
- DUCT SEALING:** ALL INTERIOR DUCTWORK SHALL BE SEALED WITH MASTIC AND INSULATED WITH A MINIMUM R-6 INSULATION. CONCEALED INSULATION SHALL BE FIBERGLASS DUCT WRAP WITH FOIL FACE.
- FLASHING:** PROVIDE WATER TIGHT FLASHING AT ALL EXTERIOR DUCT AND INTAKE/EXHAUST PENETRATIONS. MATCH COLOR WITH BUILDING.
- SCREENS:** PROVIDE PROPERLY SIZED PERMANENTLY ATTACHED CORROSION RESISTANT BIRD SCREENS FOR ALL HVAC EQUIPMENT EXTERIOR WALL OR ROOF PENETRATIONS.
- DRYER VENTING:** DRYER VENTS SHALL BE 4" SHEET METAL DUCT. ASSEMBLE WITHOUT SCREWS AND TERMINATED AT THE EXTERIOR WALL. INSULATE DRYER DUCTS THAT ARE LOCATED OUTSIDE THE BUILDING ENVELOPE TO PREVENT CONDENSATION..
- MANUALS:** PROVIDE (2) SETS OF OPERATION AND MAINTENANCE MANUALS TO OWNER.

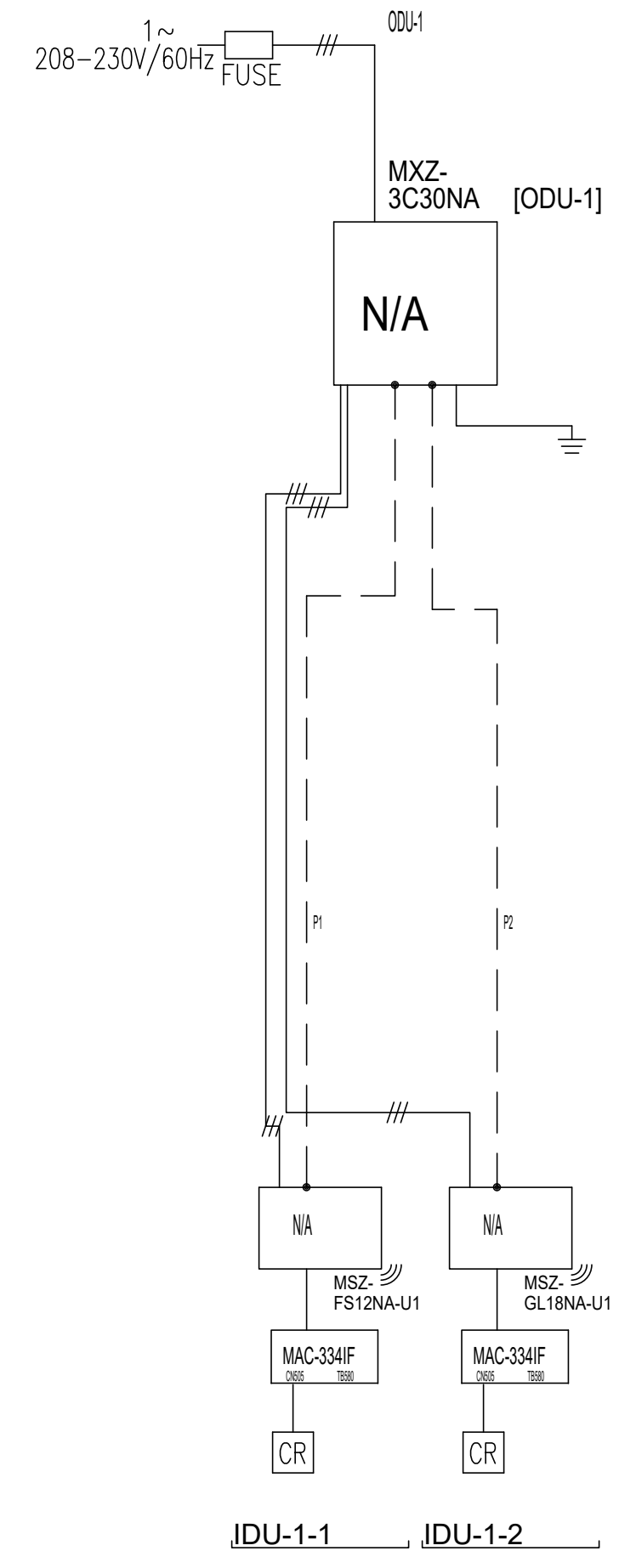


DIAGRAM DISPLAY	SYMBOL	LEGEND DESCRIPTION
---	---	POWER WIRE
---	---	CONTROL WIRE
---	---	REF. PIPE

PIPING AND CONTROLS	
SYMBOL	LIQUID PIPE/GAS PIPE SIZE
P1	1/4" 3/8"
P2	1/4" 1/2"
SYMBOL	MODEL NUMBER
CR	PAC-FTS30RAL-U

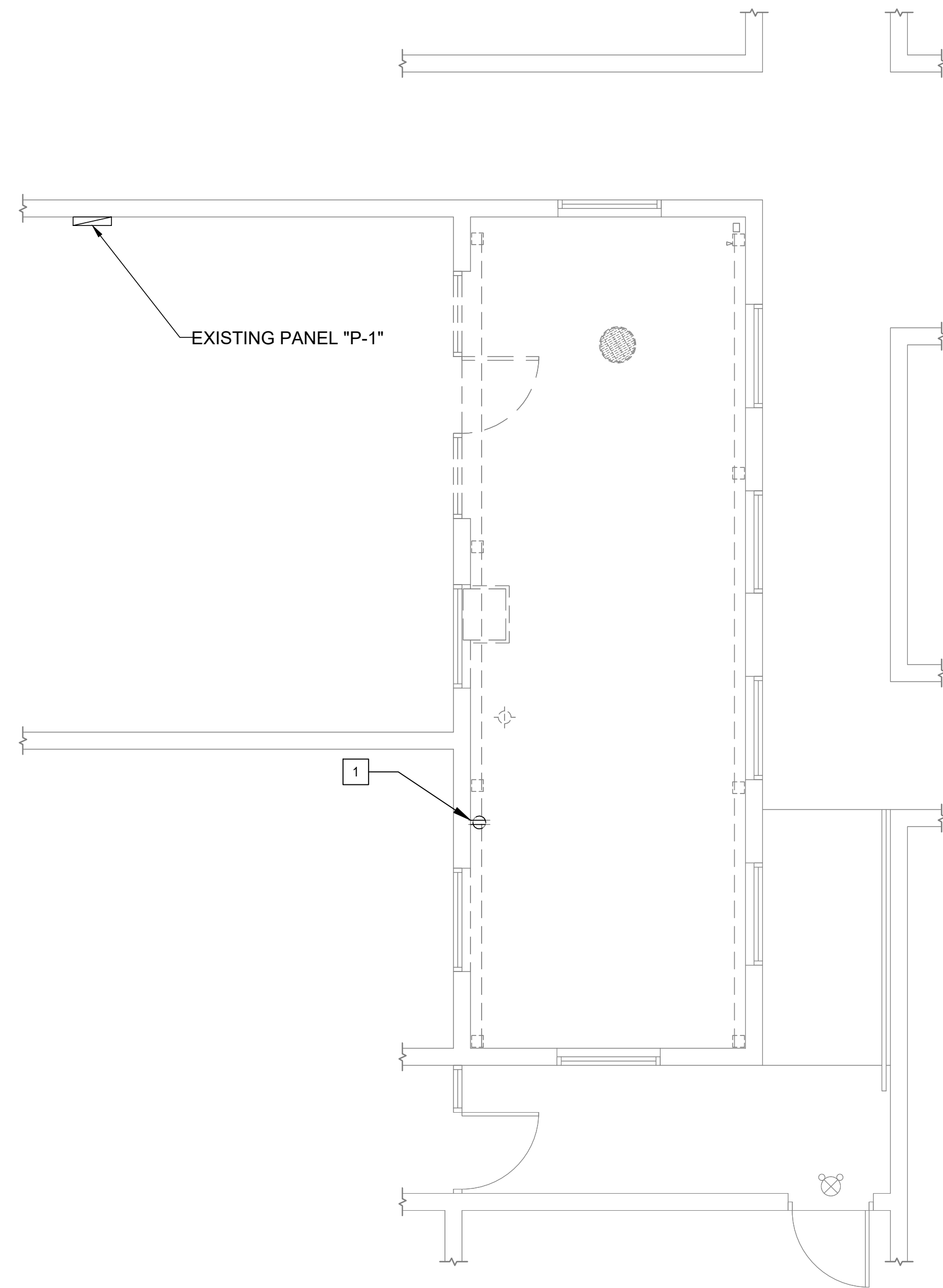
This drawing is schematic in nature. Final routing of piping & wiring shall be determined by the installing contractor and/or designer of record. Additional refrigerant charge is needed depending on the size and length of extended piping. Please refer the amount of pre-charge and the formula of calculation which is mentioned on the data book.
 $1.25mm^2(16 AWG)$: $1.25mm^2(16 AWG)$ or more. $0.75mm^2(20 AWG)$: between $0.5mm^2(24 AWG)$ and $0.75mm^2(20 AWG)$.

Notes:
NOTE 1: Install twinning 1/4" within 15 degrees of level and with 20 inches of straight pipe on converging connection - reference installation manual for additional details including but not limited to special trapping requirements when twinning, and pipe slope requirements

1 DUCTLESS SYSTEM WIRING/PIPING DETAIL
M-2 SCALE: NONE



DEMOLITION NOTES	
(APPLIES TO THIS DRAWING)	
1	REMOVE EXISTING RECEPTACLE.



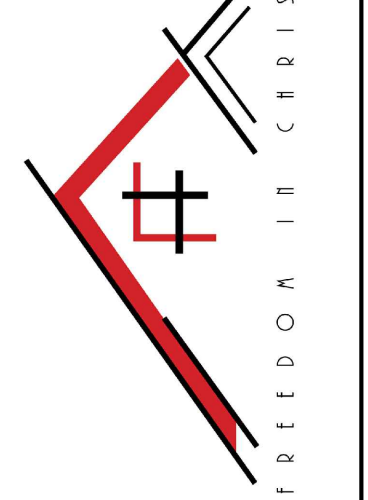
1 ELECTRICAL - POWER DEMOLITION PLAN
ED-1 SCALE: 1/4"=1'-0"

REVISIONS	BY

PRELIMINARY
NOT FOR
CONSTRUCTION

PROFESSIONAL CERTIFICATION:
I CERTIFY THAT THESE DOCUMENTS WERE
PREPARED UNDER MY SUPERVISION AND
APPROVED BY ME, AND THAT I AM A FULLY
LICENSED ARCHITECT UNDER THE LAWS OF
THE STATE OF DELAWARE, LICENSE
NUMBER 5242, EXPIRATION DATE 12-31-2024

WM BYTED JR. ARCHITECT, INC
PO Box 104, Kenton, DE 19955
Phone: 302-653-3550
Cell: 302-359-3313
bill@wmbjeda.com
www.wmbjeda.com



EIT-OUT FOR
MMC COURTYARD
1121 FORREST AVE
DOVER, DE 19904

ELECTRICAL -
POWER
DEMOLITION
PLAN

EDWARD H. DE WITT
LICENSE
DELAWARE
PROFESSIONAL ENGINEER



Mechanical | Electrical | Systems Engineering
PO Box 488, Smyrna, DE 19977 302-659-6090

DRAWN
LAU
CHECKED
EAU
DATE
12 SEPTEMBER 2024
SCALE
NOTED
JOB NO.
C1654-0124
SHEET

ED-1

OF SHEETS

FIRE ALARM LEGEND	
SYMBOL	DESCRIPTION
	FIRE ALARM HORN/STROBE MOUNT CENTER @ 84" A.F.F.

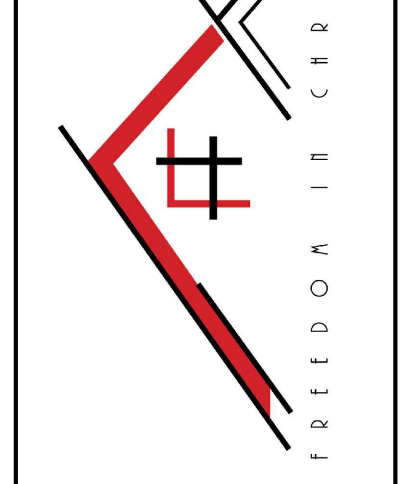
ELECTRICAL LEGEND	
SYMBOL	DESCRIPTION
	HOMERUN TO PANELBOARD/LOAD CENTER - ONE BRANCH-CIRCUIT - TEXT INDICATES PANELBOARD / LOAD CENTER DESIGNATION AND BRANCH-CIRCUIT NUMBER. E.G. (PANELBOARD DESIGNATION) - (BRANCH-CIRCUIT NUMBER) FEATURES: CONDUCTOR (EGG) USING APPROVED WIRING METHOD, U.O.N. OR SPECIFIED.
	BRANCH-CIRCUIT. BRANCH-CIRCUIT FEATURES: CONDUCTOR IN APPROVED WIRING METHOD
	BELOW SLAB OR GRADE BRANCH-CIRCUIT. FEATURES: CONDUCTOR IN APPROVED WIRING METHOD
	LOW VOLTAGE CABLING
	DUPLEX RECEPTACLE - M.H. 18" AFF
	DATA/COMM OUTLET. M.H. 18" AFF U.O.N.
	TOGGLE SWITCH - SINGLE POLE, 3-WAY, DIMMABLE (LOW VOLTAGE), OCCUPANCY SENSOR. M.H. 42" AFF
	EMERGENCY LIGHTING UNIT - SELF-CONTAINED, REMOTE HEAD. M.H. 7'-6" AFF U.O.N. TEXT INDICATES FIXTURE TYPE
	EXIT UNIT - SELF-CONTAINED UNIT. - WITH HEADS. CEILING MOUNT U.O.N. TEXT INDICATES FIXTURE TYPE

REVISIONS	BY

PRELIMINARY
NOT FOR
CONSTRUCTION

PROFESSIONAL CERTIFICATION:
I CERTIFY THAT THESE DOCUMENTS WERE
PREPARED UNDER MY SUPERVISION AND
APPROVED BY ME, AND THAT I AM A DULY
LICENSED ARCHITECT UNDER THE LAWS OF
THE STATE OF DELAWARE, LICENSE
NUMBER 5242, EXPIRATION DATE 12-31-2024

WYBYLIED JR. ARCHITECT, LLC
PO Box 104, Kenton, DE 19955
Phone: 302-653-3550
Cell: 302-359-3313
bill@wybyliedjr.com
www.wybyliedjr.com

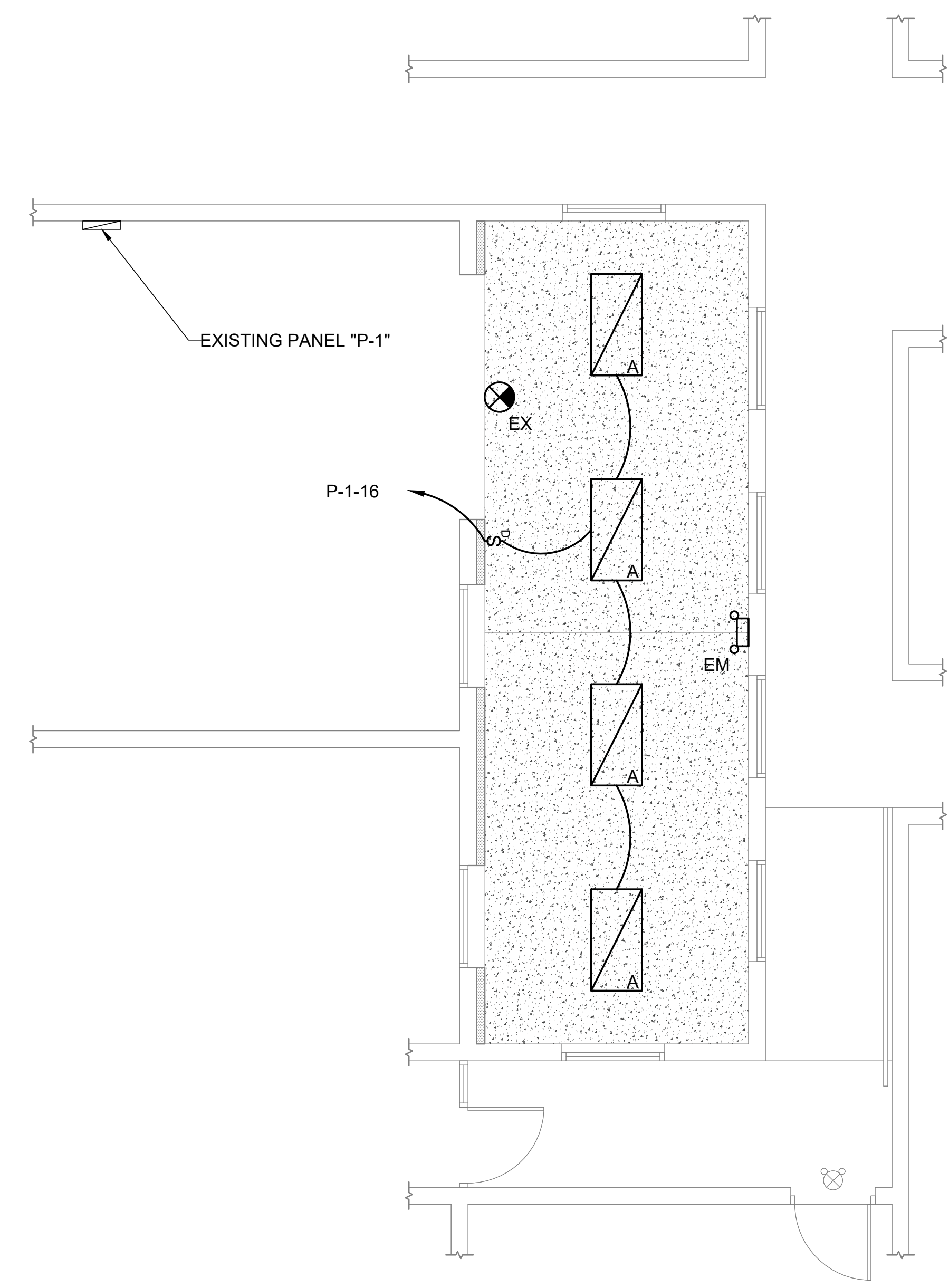


EIT-OUT FOR
MMC COURTYARD
1121 FORREST AVE
DOVER, DE 19904

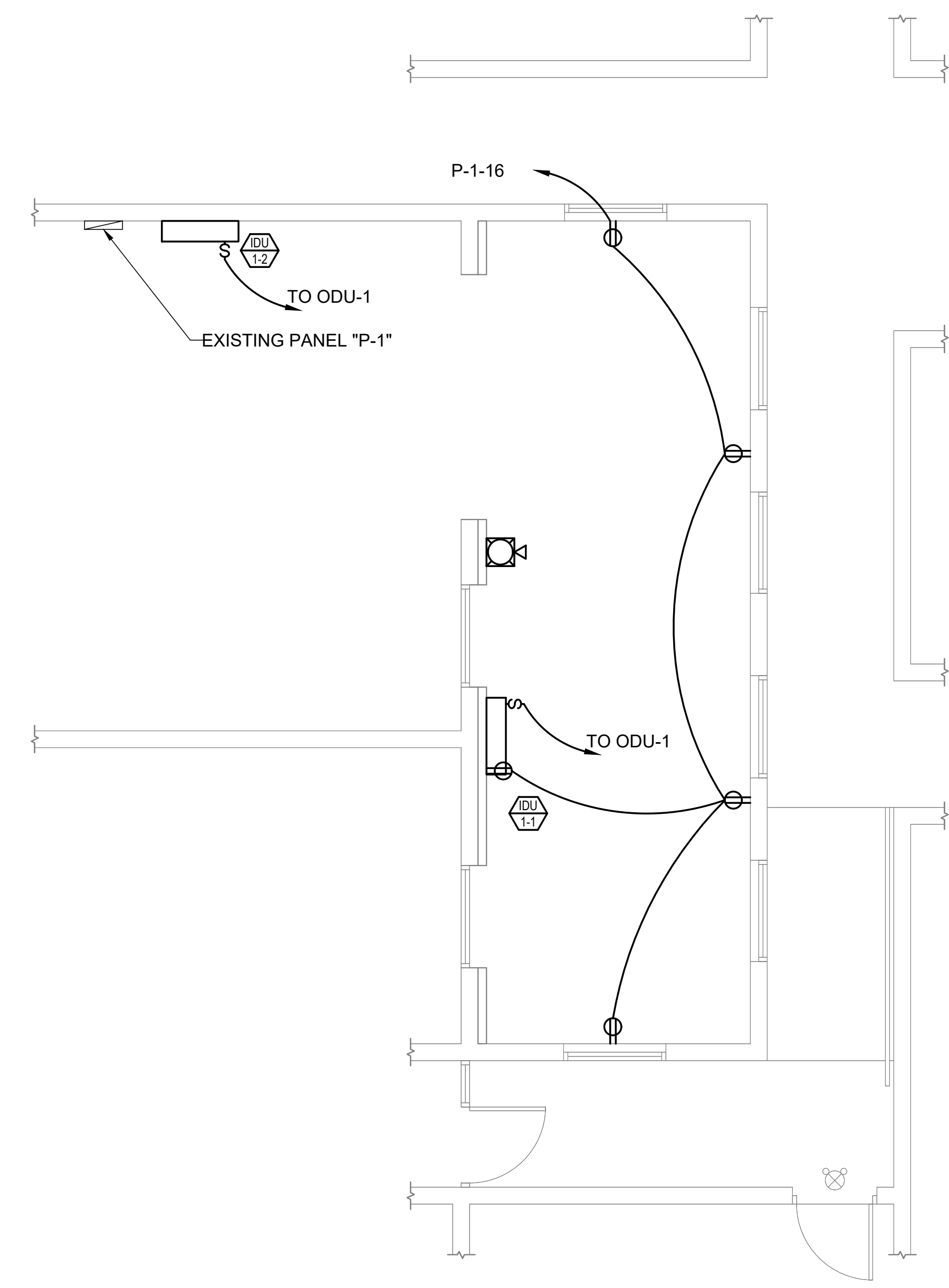
ELECTRICAL -
NEW WORK
PLAN

DRAWN
LAU
CHECKED
EAU
DATE
12 SEPTEMBER 2024
SCALE
NOTED
JOB NO.
C1654-0124
SHEET

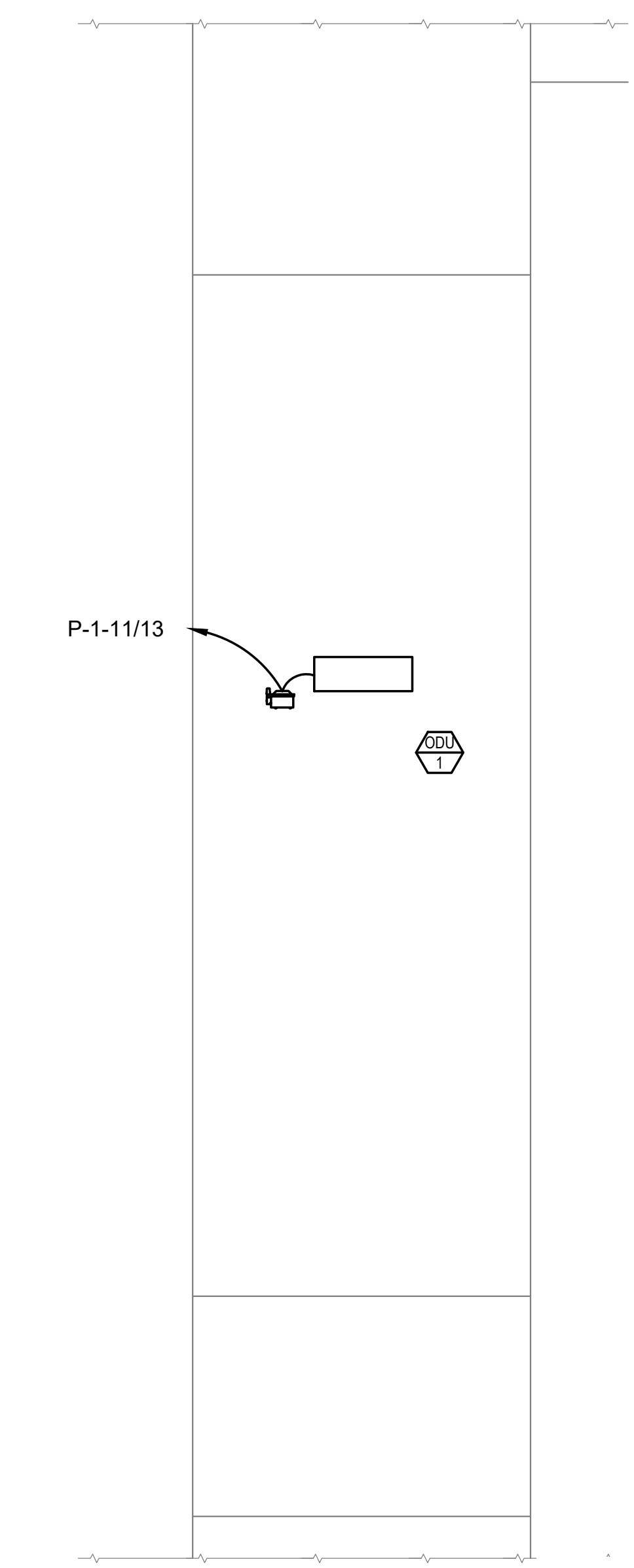
E-1
OF SHEETS



1 ELECTRICAL - LIGHTING NEW WORK PLAN
E-1 SCALE: 1/4"=1'-0"

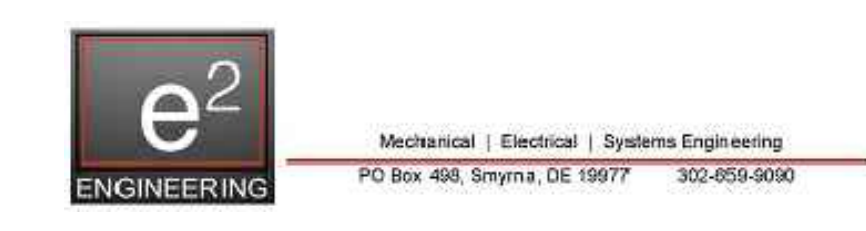


2 ELECTRICAL - POWER NEW WORK PLAN
E-1 SCALE: 1/4"=1'-0"



3 ELECTRICAL - POWER ROOF NEW WORK PLAN
E-1 SCALE: 1/4"=1'-0"

Edward H. Lau
EDWARD H. LAU
LICENSE
DELAWARE
PROFESSIONAL ENGINEER



Mechanical | Electrical | Systems Engineering
PO Box 488, Smyrna, DE 19977 302-659-9090

GENERAL ELECTRICAL NOTES:

- CODES:** ALL ELECTRICAL WORK SHALL CONFORM TO THE CURRENT NATIONAL ELECTRICAL CODE, UNDERWRITERS LABORATORIES, NATIONAL BOARD OF UNDERWRITERS, NFPA, AND ANY STATE, COUNTY, OR MUNICIPAL LAWS OR REGULATIONS HAVING JURISDICTION. ALL MATERIAL AND EQUIPMENT SHALL BE APPROVED FOR THE INTENDED USE. THIS IS IN ADDITION TO COMPLYING WITH OTHER SPECIFIC DIRECTION PROVIDED IN THESE DOCUMENTS. NO EXTRAS WILL BE APPROVED TO COMPLY WITH THE APPLICABLE CODES.
- INSPECTIONS:** THE ELECTRICAL CONTRACTOR SHALL OBTAIN AND PAY FOR ALL PERMITS REQUIRED FOR THE COMPLETION OF HIS WORK. THE ELECTRICAL CONTRACTOR SHALL ARRANGE AND PAY FOR ALL INSPECTIONS AND TESTS REQUIRED BY THE ABOVE AGENCIES. HE SHALL FURNISH REQUIRED CERTIFICATES OF INSPECTION TO THE OWNER, INCLUDING THE ELECTRICAL CERTIFICATE FROM FIRST STATE INSPECTION AGENCY.
- CONTRACTOR'S RESPONSIBILITY:** IT IS THE RESPONSIBILITY OF THE CONTRACTOR TO PROVIDE ALL LABOR, TOOLS, MATERIALS, AND SUPERVISION TO COMPLETE ALL THE ELECTRICAL WORK AS SHOWN AND DESCRIBED ON THE DRAWINGS. ALL INCIDENTAL MATERIALS NORMALLY REQUIRED FOR A COMPLETE AND OPERATIONAL ELECTRICAL SYSTEM, ALTHOUGH NOT SPECIFICALLY IDENTIFIED ON THESE DRAWINGS, ARE UNDERSTOOD TO BE THE RESPONSIBILITY OF THE ELECTRICAL CONTRACTOR. ALL WORK INCLUDING MATERIALS IS SUBJECT TO APPROVAL OF THE OWNER. ANY QUESTIONS PERTAINING TO THESE NOTES OR LOCATIONS OF EQUIPMENT AND DEVICES, OR CONFLICTS IN DOCUMENTS, MUST BE RESOLVED BY THE ENGINEER.
- WORKMANSHIP:** ALL WORK SHALL BE PERFORMED IN A NEAT AND WORKMANLIKE MANNER IN CONFORMANCE WITH THE N.E.C. BY SKILLED MECHANICS, USING THE BEST METHODS KNOWN TO THE TRADE, AND SHALL PRESENT A NEAT AND PROFESSIONAL APPEARANCE WHEN COMPLETED. FINAL LOCATIONS OF ALL EXPOSED DEVICES ARE SUBJECT TO THE APPROVAL OF THE OWNER. ALL ELECTRICAL DEVICES MUST BE ACCESSIBLE AND CONFORM TO MOUNTING HEIGHTS AND CLEARANCES REQUIRED BY THE N.E.C. AND ADA. MATERIALS NOT INSTALLED TO THE SATISFACTION OF THE OWNER MUST BE REARRANGED AT NO ADDITIONAL COST TO THE OWNER.
- OWNER'S RIGHTS:** THE OWNER RESERVES THE RIGHT TO CHANGE, WITHOUT ADDITIONAL COST, THE LOCATION OF ANY OUTLET, LIGHT FIXTURE, OR APPARATUS SPECIFIED OR SHOWN ON THE DRAWINGS, PROVIDED SUCH CHANGE DOES NOT ADD MORE THAN 10'-0" TO THE CONDUIT AND/OR CIRCUIT, AND CHANGE IS ORDERED BEFORE THE INSTALLATION FOR SAID WORK HAS COMMENCED.
- GUARANTEE:** THE CONTRACTOR SHALL SUBMIT A GUARANTEE IN WRITING TO THE OWNER THAT WARRANTS THE INSTALLATION IS FREE FROM DEFECTS FOR A PERIOD OF ONE (1) YEAR AFTER ALL WORK IS COMPLETED, ACCEPTED BY THE OWNER, AND THE OWNER OCCUPIES THE SPACE.
- COORDINATION:** PROGRESS OF THE ELECTRICAL WORK SHALL BE COORDINATED WITH THE OWNERS REPRESENTATIVE & OTHER TRADES SO THAT ALL WORK WILL BE FULLY COMPLETED ON SCHEDULE. THE CONTRACTOR SHALL WORK IN HARMONY WITH OTHER TRADES. EXECUTION AND COORDINATION OF THE WORK SHALL BE PERFORMED IN AN INTELLIGENT MANNER, INCLUDING ALLOWANCE FOR FUTURE EXPANSION
- SAFETY:** THE CONTRACTOR SHALL PERFORM HIS WORK IN A CLEAN AND SAFE MANNER. HE SHALL, AT ALL TIMES, TAKE WHATEVER MEASURES ARE NECESSARY TO ASSURE THE SAFETY OF ALL PERSONNEL AND COMPLY WITH ALL OSHA REQUIREMENTS & RECOMMENDATIONS. THE CONTRACTOR SHALL CLEAN UP AFTER EACH WORKING DAY AND SECURE INCOMPLETE WORK IN A SAFE AND ORDERLY CONDITION. ALL DEBRIS SHALL BE REMOVED FROM THE SITE IN A TIMELY MANNER.
- EQUIPMENT TESTING:** THE ELECTRICAL CONTRACTOR SHALL TEST ALL EQUIPMENT AND DEVICES INSTALLED TO THE SATISFACTION OF THE OWNER. RESPONSIBILITY AS TO THE OPERATION OF ALL EQUIPMENT SHALL APPLY ONLY TO THOSE ITEMS FURNISHED BY THE ELECTRICAL CONTRACTOR, BUT THE ELECTRICAL CONTRACTOR ASSUMES ALL RESPONSIBILITY FOR ACCURATE WORK. THE ELECTRICAL CONTRACTOR SHALL PROVIDE ALL LABOR AND TEST INSTRUMENTS REQUIRED FOR TESTING THIS ELECTRICAL WORK, INCLUDING INFRARED IMAGES.
- UPON COMPLETION OF THE WORK,** THE ELECTRICAL CONTRACTOR SHALL DEMONSTRATE THAT THE INSTALLATIONS ARE COMPLETE AND IN PERFECT OPERATING ORDER WITH WIRING FREE FROM GROUNDS OR SHORTS AND WITH EQUIPMENT AND RACEWAYS PROPERLY GROUNDED.
- O & M MANUAL:** THE CONTRACTOR SHALL FURNISH THE ENGINEER WITH TWO (2) O & M MANUALS THAT PROVIDES BASIC DATA RELATING TO THE DESIGN AND MAINTENANCE OF THE BUILDING ELECTRICAL DISTRIBUTION SYSTEM. THE MANUAL SHALL INCLUDE A TABLE OF CONTENTS, TABS, ELECTRONIC AND HARD COPY OF RECORD DOCUMENTS, AND MANUFACTURERS OPERATIONAL AND MAINTENANCE INFORMATION FOR ELECTRICAL EQUIPMENT
- SITE VISIT:** THE ELECTRICAL CONTRACTOR SHALL VISIT THE SITE TO REVIEW AND EVALUATE THE EXISTING ELECTRICAL SYSTEMS PRIOR TO BIDDING. OBSERVATIONS AND DETERMINATIONS SHALL BE MADE AS THE CAPACITY OF THE EXISTING PROPOSED CONSTRUCTION. ANY COSTS OF MODIFICATIONS OR UPGRADES DETERMINED TO BE NECESSARY SHALL BE INCLUDED IN THE ELECTRICAL CONTRACTORS BID. FAILURE TO ADEQUATELY INVESTIGATE THE SITE CONDITIONS PRIOR TO BIDDING SHALL NOT BE GROUNDS FOR AN EXTRA COST TO THE OWNER.
- QUALITY OF MATERIALS:** ALL MATERIALS SHALL BE NEW AND SHALL BEAR THE U.L. LABEL OR BE U.L. LISTED, WHERE APPLICABLE, AND SHALL BE INSTALLED IN ACCORDANCE WITH THE N.E.C. AND NEMA STANDARDS. THE MATERIALS DESCRIBED ARE INTENDED TO SET A HIGH STANDARD OF COMMERCIAL QUALITY.
- SPECIFIED ITEMS:** WHERE MATERIALS OR EQUIPMENT ARE SPECIFIED BY MANUFACTURER OR BRAND NAME AND CATALOG NUMBER, SUCH DESIGNATION IS TO ESTABLISH STANDARDS OF QUALITY AND STYLE. THE CONTRACTOR ASSUMES THE RISK IF AN ITEM IS SUBSTITUTED FOR BID PURPOSES WITHOUT APPROVAL. MATERIALS SO SPECIFIED, OR APPROVED EQUALS, SHALL BE FURNISHED UNDER THE CONTRACT UNLESS CHANGED BY WRITTEN AGREEMENT. SUBSTITUTIONS MAY BE ACCEPTED ALONG WITH APPROPRIATE DEDUCTS TO THE BID PRICE.
- RECORD DRAWINGS:** THE CONTRACTORS SHALL KEEP AT THE JOB SITE A CLEAN SET OF DRAWINGS FOR HIS USE AND RECORD THEREON ANY AND ALL CHANGES OR DEVIATIONS FROM THE ORIGINAL DRAWINGS. THIS SET OF DRAWINGS SHALL BE KEPT UP-TO-DATE AND SHALL BE TURNED OVER TO THE ENGINEER AT THE COMPLETION OF THE JOB. THE ENGINEER HAS THE RIGHT TO REVIEW THE SET OF AS-BUILTS AT ANYTIME.
- OUTLET, SWITCH & JUNCTION BOXES:** ALL OUTLET BOXES SHALL BE SQUARE AND PLUMB WITH THE SURFACE AND LABELED ON THE COVER PLATE WITH THE CIRCUIT NUMBER AND PANEL FROM WHICH THE CIRCUIT ORIGINATES. OUTLET BOXES SHALL BE METAL, NON-GANG ABLE KNOCKOUT TYPE. MINIMUM SIZE SHALL BE 4"x2". PROVIDED PLASTER RINGS OF DEPTH REQUIRED TO REACH FINISHED SURFACES
- WIRE ROUTING:** THE ELECTRICAL SYSTEM AND WIRE ROUTING SHALL BE DETERMINED BY THE ELECTRICAL CONTRACTOR. ALL ROUTING MUST BE CONFIRMED BY THE CONTRACTOR AFTER VERIFYING ALL DIMENSIONS AND CONDITIONS FOR POSSIBLE INTERFERENCES WITH MECHANICAL EQUIPMENT, PLUMBING, DUCTWORK, STRUCTURAL SUPPORTS, ETC. AND RECEIVING APPROVAL FROM THE PROJECT MANAGER. ALL MODIFICATIONS ARE UNDERSTOOD TO BE AT NO COST TO THE OWNER. THE CONTRACTOR MAY MODIFY ROUTING WITH THE ABOVE LIMITATIONS.
- FIXTURES:** THE ELECTRICAL CONTRACTOR SHALL PROVIDE AND INSTALL REQUIRED SUPPORTS FOR FIXTURES AND EQUIPMENT. LIGHTING FIXTURES, FANS, ETC., SHALL BE SECURELY MOUNTED TO OUTLET BOXES AND BUILDING CONSTRUCTION. PROVIDE LAMPS FOR ALL FIXTURES.
- PANEL SCHEDULE:** CONTRACTOR SHALL ADHERE TO THE PANEL SCHEDULE(S) AS SPECIFIED AND PROVIDE REVISED CIRCUIT DIRECTORY CARD(S). DIRECTORY CARD(S) SHALL BE NEATLY AND ACCURATELY TYPED, HAVE A TRANSPARENT COVER(S), AND CONTAIN ALL INFORMATION FROM THE DRAWING PANEL SCHEDULE.
- NEUTRALS:** ALL CIRCUITS SHALL HAVE DEDICATED NEUTRALS AND GROUND WIRES. NEUTRALS SHALL NOT BE SHARED BY MORE THAN ONE PHASE CONDUCTOR OR CIRCUIT.
- GROUNDING:** PROVIDE ALL WIRING, GROUNDING CONDUCTORS, AND GROUNDING DEVICES REQUIRED TO COMPLY WITH ARTICLE 250 OF THE N.E.C. EVERY CIRCUIT SHALL HAVE A GROUND WIRE.
- RECEPTACLES:** INSTALL G.F.C.I. RECEPTACLES AS PER N.E.C. MOUNT RECEPTACLES 8" ABOVE COUNTERTOPS OR SINKS WHERE INDICATED. MOUNT SWITCH OUTLETS 50"A.F.F. TO CENTER OF DEVICE A.F.F. AND RECEPTACLES 18" A.F.F. UNLESS OTHERWISE NOTED. MATCH EXISTING AS APPROPRIATE.
- COVER-PLATES:** COVER-PLATES FOR WIRING DEVICES SHALL BE SMOOTH, UNBREAKABLE NYLON, WHITE COLOR. COVER-PLATES FOR WEATHER PROOF DEVICES SHALL BE GASKETED LEXAN, SELF-CLOSING TYPE AND PERMIT THE RECEPTACLE TO BE ACTIVE WHILE MAINTAINING RATING (BUBBLE COVER). HUBBELL STAINLESS STEEL COVERS TO BE USED IN KITCHEN.
- EXPOSED CONDUIT:** NO EXPOSED CONDUIT, FLEX, OR MC CABLE SHALL BE INSTALLED ON THE EXTERIOR SURFACES OF THE BUILDING, OR IN FINISHED AREAS ON THE INTERIOR OF THE BUILDING.
- CONDUIT SUPPORT:** ELECTRICAL CONTRACTOR TO PROVIDE SUPPORT FROM STRUCTURE FOR CONDUITS, RUNNING THROUGH CEILING SPACE. ALL CONDUIT SHALL BE INSTALLED PARALELL WITH BUILDING LINES.
- CONDUIT DROPS:** THE ELECTRICAL CONTRACTOR SHALL PROVIDE 1" DIAMETER THIN WALL CONDUIT DROPS WITH PLASTER RING TO EACH DATA OR PHONE JACK. CONDUITS SHALL TERMINATE HORIZONTALLY WITH A BUSHING APPROXIMATELY 10" ABOVE THE CEILING OR TOP PLATE OF WALL.
- WIRE AND CABLE:** INSTALL WIRE AND CABLE OF SIZE, TYPE, AND QUALITY INDICATED ON DRAWINGS OR AS REQUIRED BY THE N.E.C. ALLOW SUFFICIENT SLACKS AT BOXES TO PERMIT PROPER TERMINATION AT DEVICE WITHOUT SPLICES. MINIMUM SIZE #12.
- MC:** METALLIC CLAD CABLE, MINIMUM SIZE #12 AWG SHALL BE USED FOR ALL INTERIOR WIRING NOT IN CONDUIT.
- WIRE IDENTIFICATION:** ALL POWER WIRING SHALL BE PROPERLY COLOR CODED IN CONFORMANCE WITH THE N.E.C. APPROVED WIRE MARKERS SHALL BE USED AT EACH JUNCTION BOX AND TERMINATION TO IDENTIFY THE WIRE WITH ITS PANEL AND CIRCUIT NUMBERS.
- INSULATION TAPE** SHALL BE VINYL PLASTIC ELECTRICAL TAPE, MINIMUM 7 MIL THICK, SCOTCH #33 OR APPROVED EQUAL.
- SPLICES:** SPLICES OF #10 WIRE AND SMALLER SHALL BE MADE WITH APPROVED TYPE PRESSURE CONNECTORS AND INSULATING CAPS (WIRE NUTS). SPLICES IN #8 WIRE AND LARGER SHALL BE MADE WITH APPROVED TYPE SLEEVE CONNECTORS AND INSULATED TO SAME THICKNESS AS THE ORIGINAL INSULATION, WITH AN APPROVED TAPE HAVING HIGH DIELECTRIC STRENGTH. ELIMINATE ALL UNNECESSARY SPLICES. POLARIS TYPE FACTORY INSULATED MECHANICAL CONNECTION LUGS SHALL ALSO BE PERMITTED.
- CONDUCTORS:** ALL CONDUCTORS SHALL BE COPPER, MINIMUM SIZE #12
- PVC:** SCHEDULE 40, MINIMUM SIZE 3/4" POLYVINYL CHLORIDE (RIGID NON-METALLIC TUBING) SHALL BE USED FOR ALL EXTERIOR AND BELOW GRADE WIRING. ALL UNDERGROUND CONDUIT SHALL BE BURIED 24" TO 30" BELOW GRADE AND SHALL BE MARKED 8" TO 10" ABOVE CONDUIT WITH 6" WIDE POLYETHYLENE RED MARKING TAPE WITH TRACEABLE FOIL BACKING WHICH READS "CAUTION - ELECTRIC LINE BELOW." (PANDUIT CAT. #HTDU6R-E) STANDARD RADIUS ELLS SHALL BE USED.

LUMINAIRE SCHEDULE												
TYPE	DESCRIPTION	BASIS OF DESIGN		BALLAST DRIVER		SOURCE		INPUT VOLTAGE	WATTAGE	MOUNTING	COMMENTS	
		MANUFACTURER	SERIES	QTY	TYPE	TYPE	LUMENS					TEMP (K)
A	2X4 LED PANEL	LITHONIA	CPX	1	LED	LED	4000	4,000	MVOLT	35.5	RECESSED	CPX-2X4-AL08-SWW7-M2-4000-4000K-80-120/277
EM	EMERGENCY LIGHT	LITHONIA	ELM6L	N/A	LED	LED	1100	-	MVOLT	-	SURFACE	ELM6L-UVOLT
EX	EXIT/EMERGENCY EXIT	LITHONIA	LQM LED	1	LED	LED	-	-	MVOLT	-	SURFACE	LQM-S-W3-R-MVOLT

NOTES:

PANELBOARD: PANEL P-1

VOLTS: 120/208 MOUNTING: FLUSH A.I.C. RATING: 10K
 PHASE/WIRE: 1 PHASE, 3 WIRE ENCLOSURE: TYPE 1 MAINS TYPE: MAIN CIRCUIT BREAKER (MCB)
 SERVED BY: EQUIPMENT: EQUIP. GND BAR MAINS RATING: 100A
 MCB RATING: 100A

ROOM DESIGNATION: LOCATION:

CKT NO.	CKT. BKR.	TRIP	CIRCUIT DESCRIPTION	KVAPER PHASE		CIRCUIT DESCRIPTION	CKT. BKR.	TRIP	P	CKT NO.	
				A	B						
1	1	20A	SPARE			TREADMILL #1	20A	1		2	
3	1	20A	TREADMILL #3			TREADMILL #2	20A	1		4	
5	1	20A	SPARE	---	---	TREADMILL #5	20A	1		6	
7	1	20A	SPARE	---	---	WEIGHT ROOM LOWER	20A	1		8	
9	1	20A	WEIGHT ROOM UPPER	---	---	TV	20A	1		10	
11	2	25A	ODU-1		4.60	SPARE	20A	1		12	
13				4.60	---	SPARE	20A	1	14		
15	---	---			1.20	COURTYARD RECEPTACLES & LTG	20A	1		16	
17	---	---					---	---		18	
19	---	---					---	---		20	
21	---	---					---	---		22	
23	---	---					---	---		24	
TOTAL KVAPER PHASE:				4.6	5.8						
TOTAL KVA:						10.4					
TOTAL AMPS PER PHASE:				38.3	48.3						
TOTAL AMPS:						50.0					

NOTES:
BOLD INDICATES NEW CIRCUIT BREAKER

REVISIONS	BY

PRELIMINARY NOT FOR CONSTRUCTION

PROFESSIONAL CERTIFICATION: I CERTIFY THAT THESE DOCUMENTS WERE PREPARED UNDER MY SUPERVISION AND APPROVED BY ME, AND THAT I AM A DULY LICENSED ARCHITECT UNDER THE LAWS OF THE STATE OF DELAWARE, LICENSE NUMBER 5242, EXPIRATION DATE 12-31-2024

WM BYLIED JR. ARCHITECT, LLC
 PO Box 104, Kenton, DE 19955
 Phone: 302-653-3550
 Cell: 302-359-3313
 bill@wmbylidjr.com
 www.wmbylidjr.com

F A R L E D O A I I C R I S T

EIT-OUT FOR MMC COURTYARD
 1121 FORREST AVE
 DOVER, DE 19904

ELECTRICAL - SCHEDULES & NOTES

John A. L...
 DELAWARE PROFESSIONAL ENGINEER

Mechanical | Electrical | Systems Engineering
 PO Box 488, Smyrna, DE 19977 302-859-9090

DRAWN LAU
CHECKED EAU
 DATE 12 SEPTEMBER 2024
 SCALE NOTED
 SHEET NO. C1654-0124
E-2
 OF SHEETS